

**DESIGNER**  
CWS ARCHITECTS  
ARCHITECTURE | INTERIOR DESIGN  
434 CUMBERLAND AVENUE  
PORTLAND, MAINE 04101  
P: 207.774.4010  
F: 207.774.4011  
WWW.CWSARCH.COM

**OWNER**  
UNITIL  
6 LIBERTY LANE WEST  
HAMPTON, NEW HAMPSHIRE  
03842

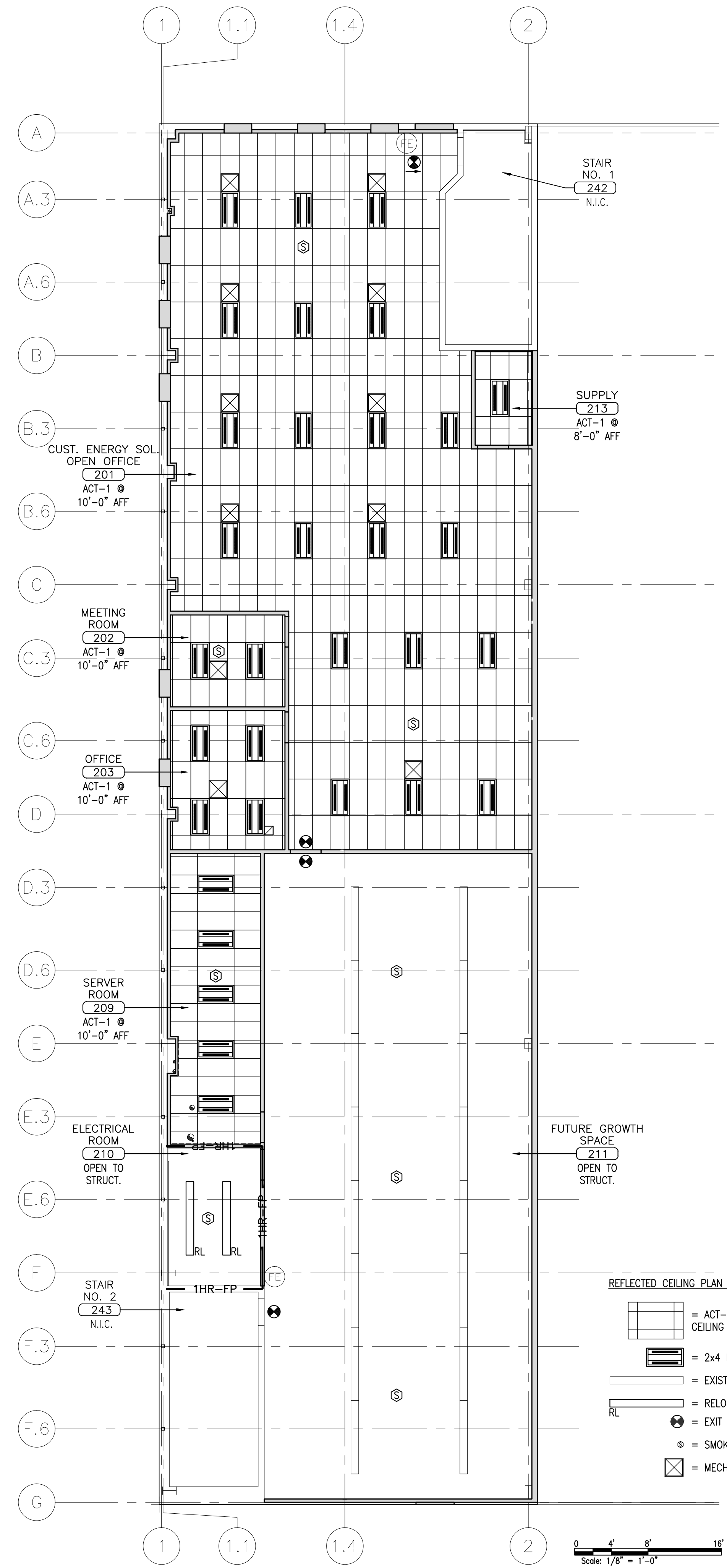
**PROJECT**  
NORTHERN  
UTILITIES, INC.  
FIT-UP  
400 RIVERSIDE INDUSTRIAL PARKWAY  
PORTLAND, MAINE 04101

**DRAWING**  
ENLARGED AREA "A"  
SECOND FLOOR  
REFLECTED CEILING  
PLAN

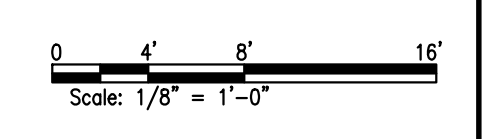
**REVISIONS**

NO.	DATE	DESCRIPTION

**DRAWING NUMBER**  
**A2.21**  
SCALE: 1/8" = 1'-0"  
DATE: 04/17/15



- REFLECTED CEILING PLAN LEGEND:**
- = ACT-1 - 2x4 ACOUSTIC CEILING TILE AND GRID SYSTEM
  - = 2x4 LIGHT FIXTURE
  - = EXISTING LIGHT FIXTURE
  - = RELOCATED LIGHT FIXTURE
  - = EXIT SIGN
  - = SMOKE DETECTOR
  - = MECHANICAL DIFFUSER



**A5** NOT USED  
REFERENCED FROM:  
SCALE: 1/8" = 1'-0"

**F5** ENLARGED AREA "A" - SECOND FLOOR REFLECTED CEILING PLAN  
REFERENCED FROM:  
SCALE: 1/8" = 1'-0"