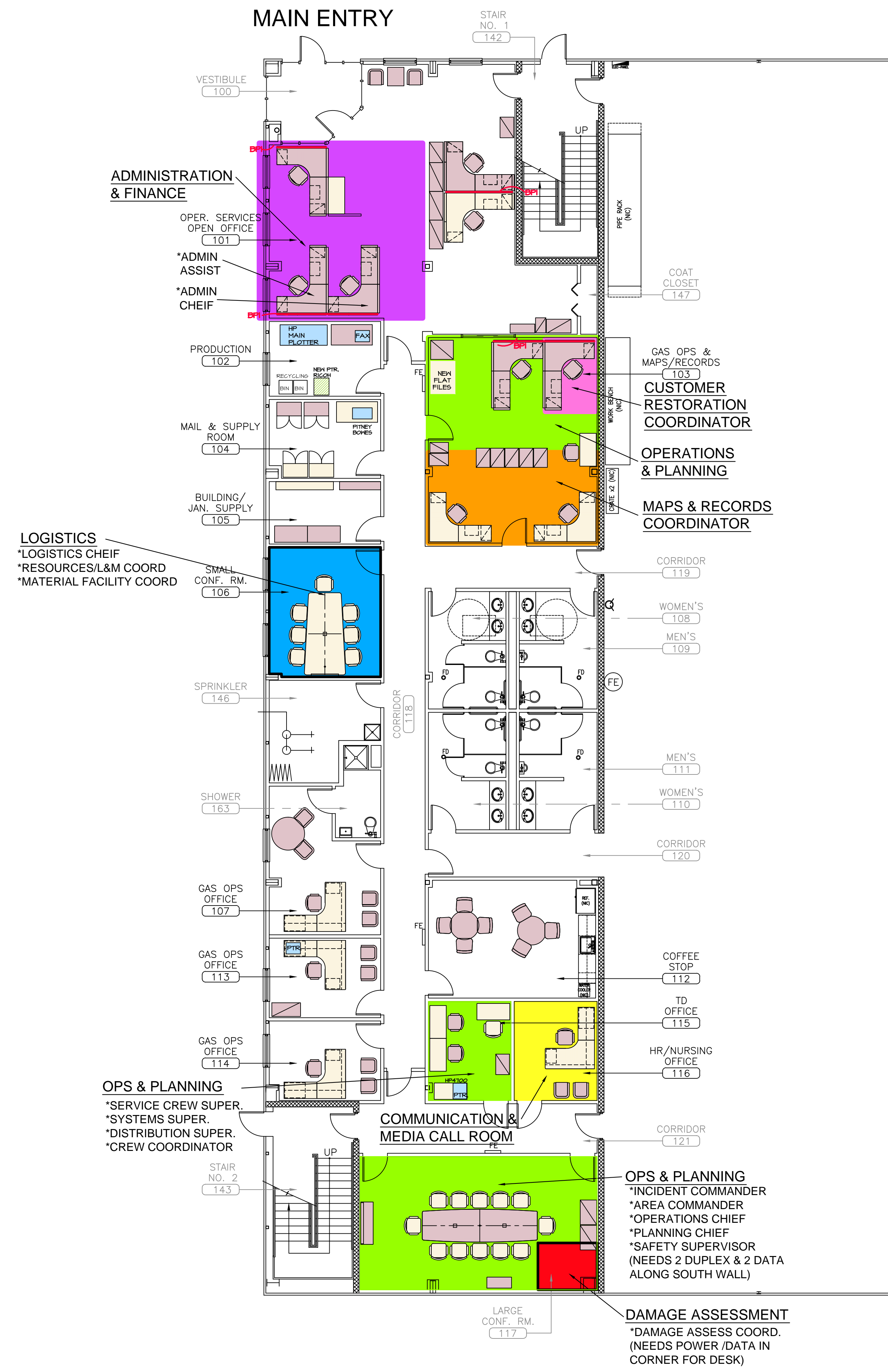
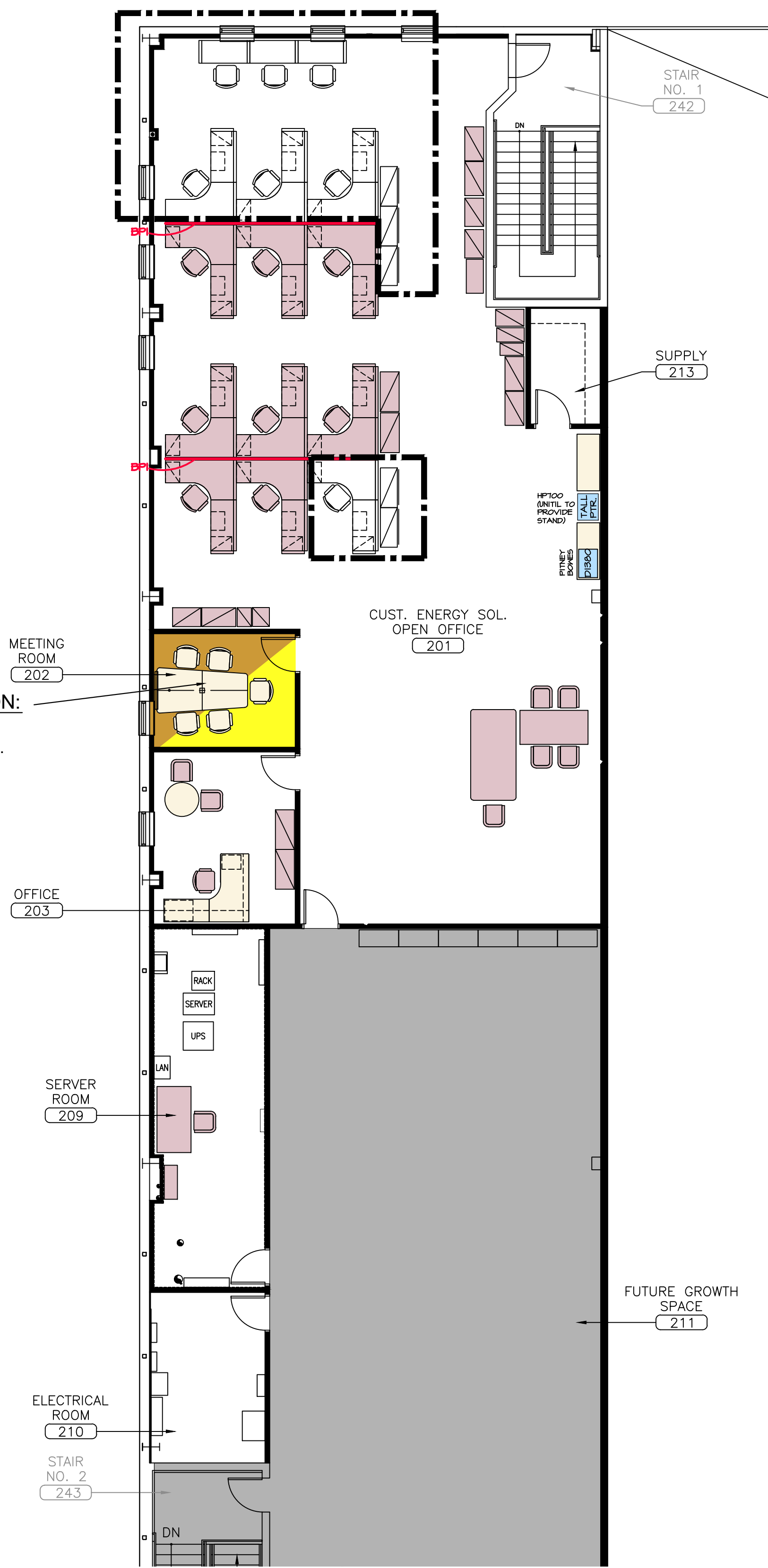


G:\CLIENTS\UNITIL\Portland - Riverside\DRAWINGS\CURRENT 5\ASSETS\SHEET UNITIL RIVERSIDE EOC.dwg 4/17/2016 11:10 AM



1 1st FLOOR PARTIAL PLAN 1/8" = 1'-0"



2 2nd FLOOR PARTIAL PLAN 1/8" = 1'-0"

EOC DRAWING KEY:

Administration & Finance
Logistics
Municipal Room
Operations & Planning
Customer Restoration Coordinator
Damage Assessment
Maps & Records
Corporate Communications



STIBLER ASSOCIATES, LLC
space planning interior design

306 Highlander Way
Manchester, New Hampshire 03103
P. 603.623.8952 F. 603.623.0593
www.stibler.com

Copyright © 2011 by Stibler Associates
No reproduction without permission.

UNITIL NORTHERN UTILITIES, INC.

**400 RIVERSIDE
INDUSTRIAL PARKWAY
PORTLAND, ME**

INFORMATION CONTAINED ON THIS DRAWING SHALL BE VERIFIED BY EACH VENDOR OR CONSULTANT PRIOR TO STARTING WORK. STIBLER ASSOCIATES IS NOT RESPONSIBLE FOR DISCREPANCIES OF FIELD DIMENSIONS OR CONDITIONS.

"ISSUED FOR CITY OF PORTLAND PERMITTING"
DATE: **04 - 17 - 2015**

REVISIONS:

EOC PLANS 1st & 2nd FLOOR PARTIAL PLANS

SCALE: 1/8" = 1'-0"
DRAWN BY: DH

ID.EOC