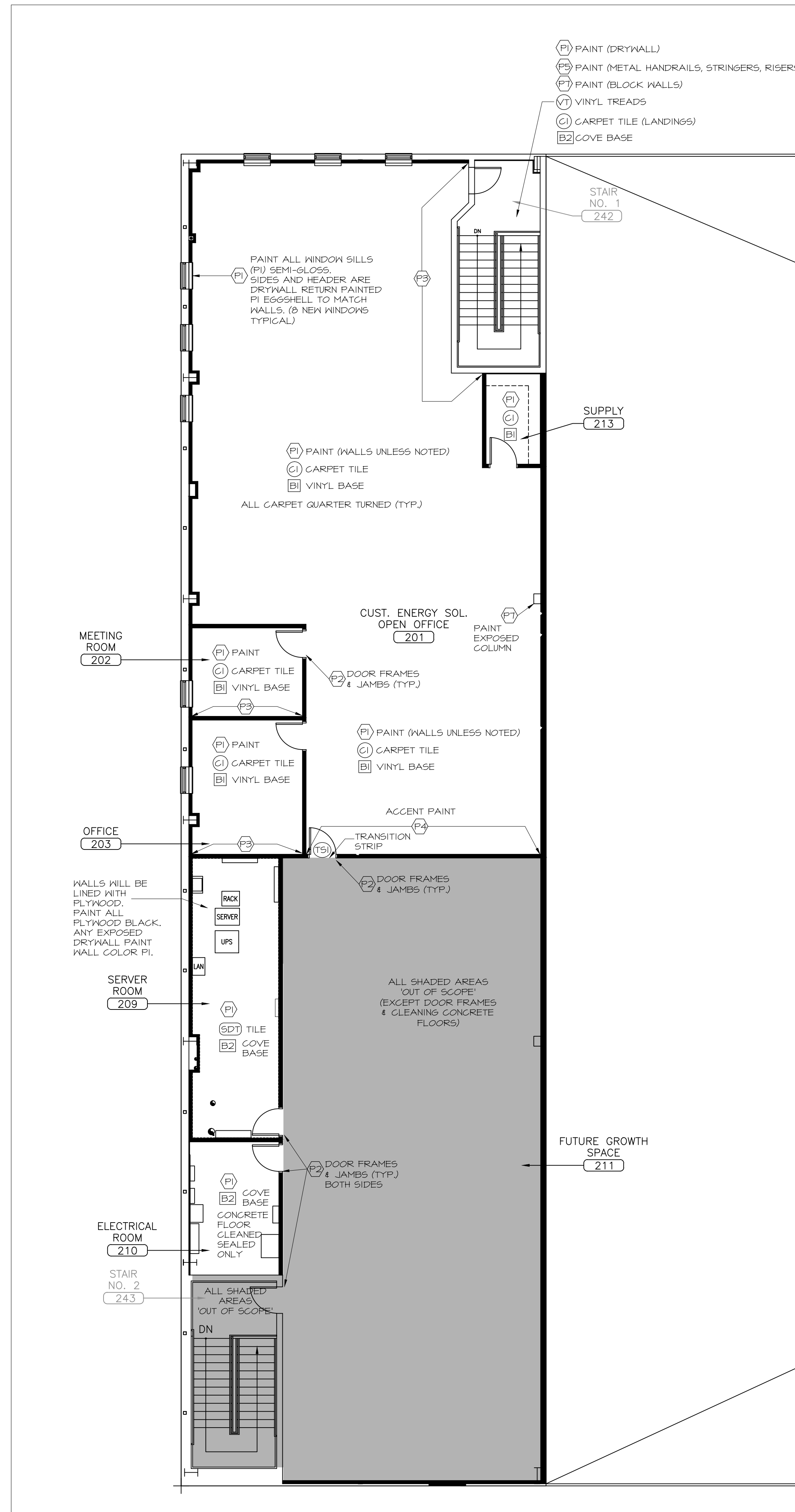
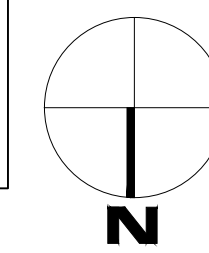


G:\CLIENTS\Hillier\Portland - Riverside\DRAWINGS\CURRENT\SASHEETS\SHEET UNTIL RIVERSIDE FIN MEZZ.dwg 4/17/2015 11:12 AM



A FINISH PLAN - MEZZANINE
1/8" = 1'-0"

NOTE: ROOMS ARE KEYED TO MASTER FINISH SCHEDULE ON ID.2



STIBLER ASSOCIATES, LLC
space planning interior design

306 Highlander Way
Manchester, New Hampshire 03103
P. 603.623.8952 F. 603.623.0593
www.stibler.com

Copyright © 2011 by Stibler Associates
No reproduction without permission.

**UNITIL
NORTHERN
UTILITIES, INC.**

**400 RIVERSIDE
INDUSTRIAL PARKWAY
PORTLAND, ME**

INFORMATION CONTAINED ON THIS DRAWING SHALL BE VERIFIED BY EACH VENDOR OR CONSULTANT PRIOR TO STARTING WORK. STIBLER ASSOCIATES IS NOT RESPONSIBLE FOR DISCREPANCIES OF FIELD DIMENSIONS OR CONDITIONS.

"ISSUED FOR CITY OF PORTLAND PERMITTING"
DATE: **04 - 17 - 2015**
REVISIONS: _____

**2nd FLOOR
FINISH PLAN**

SCALE: 1/8" = 1'-0"
DRAWN BY: DH