



STIBLER ASSOCIATES, LLC
space planning interior design

306 Highlander Way
Manchester, New Hampshire 03103
P. 603.623.8952 F. 603.623.0593
www.stibler.com

Copyright © 2011 by Stibler Associates
No reproduction without permission.

**UNITIL
NORTHERN
UTILITIES, INC.**

**400 RIVERSIDE
INDUSTRIAL PARKWAY
PORTLAND, ME**

INFORMATION CONTAINED ON THIS DRAWING
SHALL BE VERIFIED BY EACH VENDOR OR
CONSULTANT PRIOR TO STARTING WORK.
STIBLER ASSOCIATES IS NOT RESPONSIBLE
FOR DISCREPANCIES OF FIELD DIMENSIONS
OR CONDITIONS.

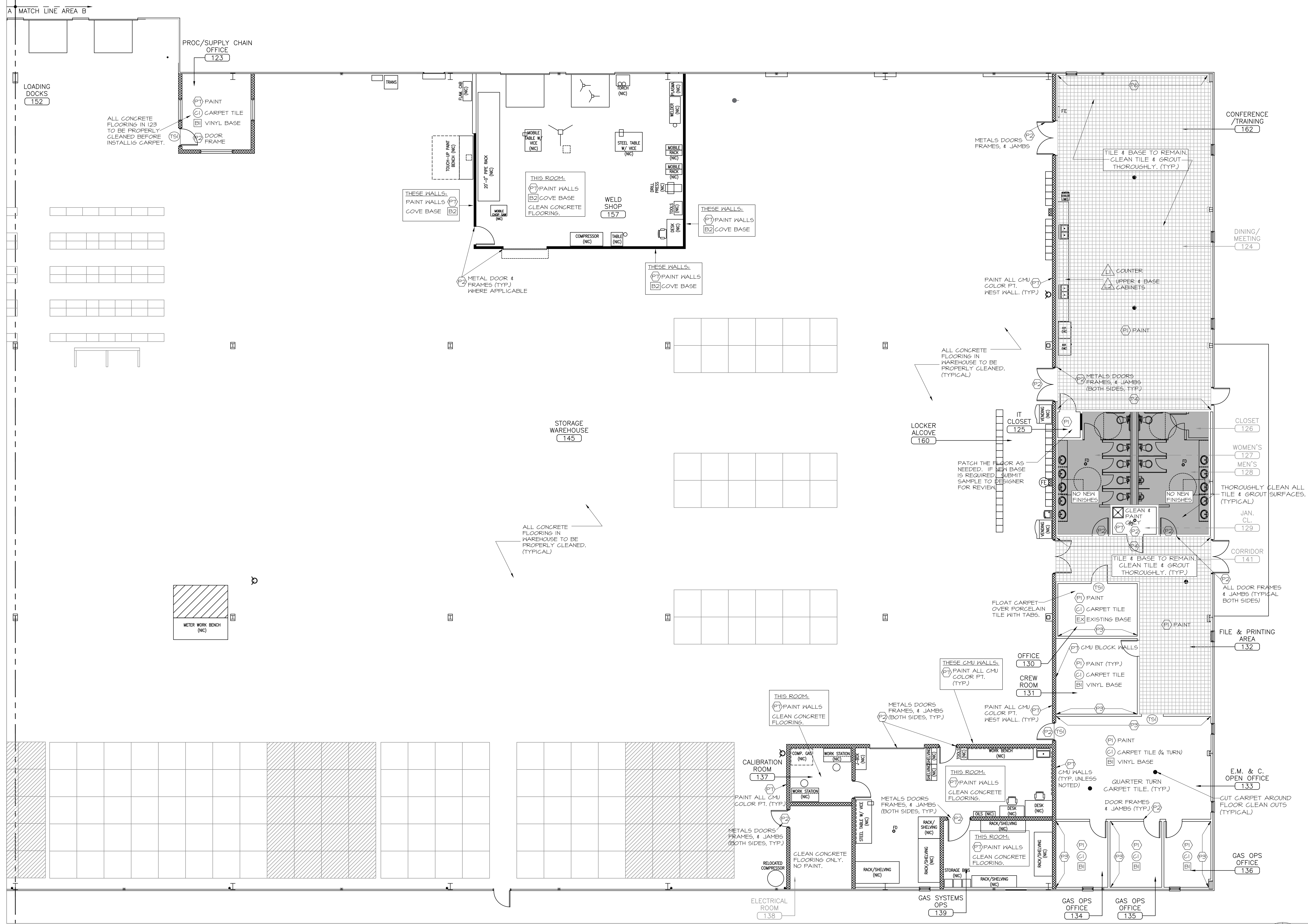
"ISSUED FOR CITY OF
PORTLAND PERMITTING"
DATE: **04 - 17 - 2015**

REVISIONS:

**1st FLOOR
FINISH PLANS
PART B**

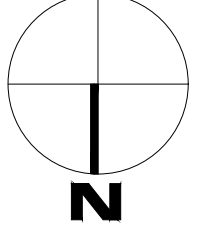
SCALE: 1/8" = 1'-0"
DRAWN BY: DH

ID.4B



B FINISH PLAN - PARTIAL BACK AREA (AREA B)
1/8" = 1'-0"

NOTE: ROOMS ARE KEYS TO MASTER FINISH SCHEDULE ON ID.3



S:\CLIENTS\UNITIL\Portland - Riverside\DRAWINGS\CURRENT\SASHEETS\SHEET 1\1ST FLOOR FINISH PART B.dwg 4/17/2015 11:16 AM