

DESIGNER

OWNER

UNITIL

6 LIBERTY LANE WEST
HAMPTON, NEW HAMPSHIRE
03842

PROJECT

NORTHERN UTILITIES, INC.
FIT-UP

400 RIVERSIDE INDUSTRIAL PARKWAY
PORTLAND, MAINE 04101

DRAWING

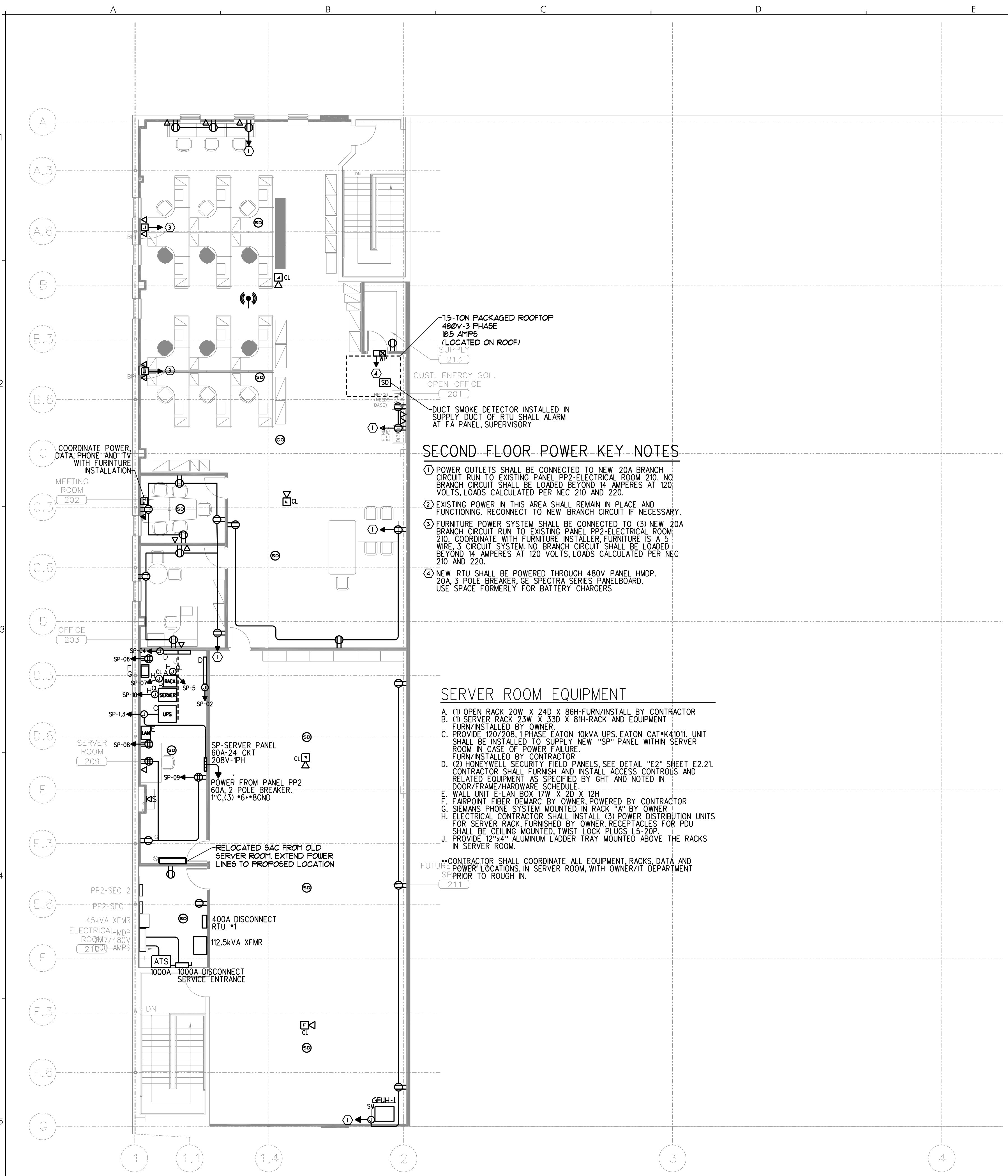
SECOND FLOOR POWER PLAN
AREA "A"

REVISIONS

DRAWING NUMBER

E2.21

SCALE: As Noted
DATE: 04/17/15



15-TON PACKAGED ROOFTOP
480V-3 PHASE
10.5 AMPS
(LOCATED ON ROOF)
213

CUST. ENERGY SOL.
OPEN OFFICE
201

DUCT SMOKE DETECTOR INSTALLED IN
SUPPLY DUCT OF RTU SHALL ALARM
AT FA PANEL, SUPERVISORY

SECOND FLOOR POWER KEY NOTES

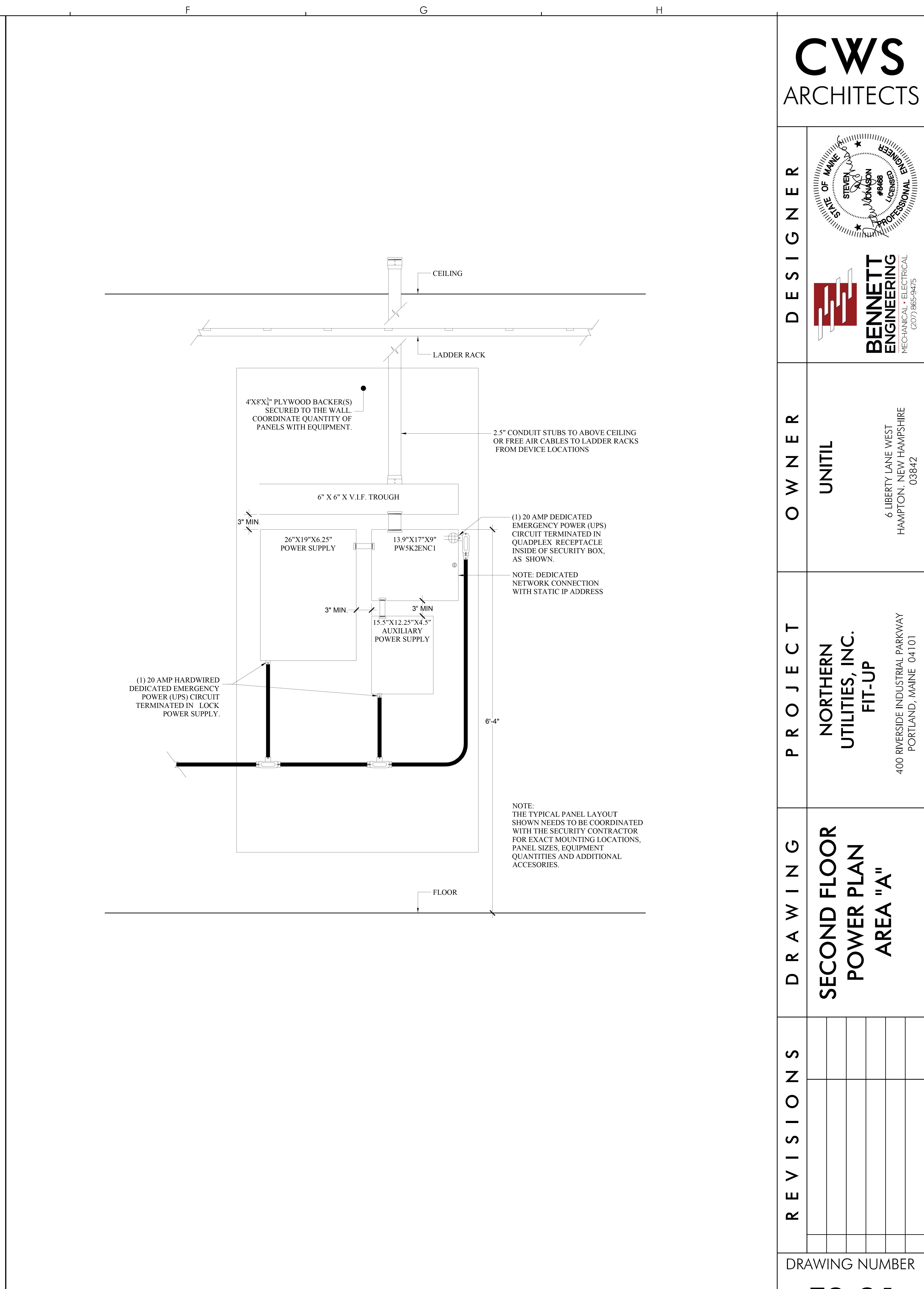
- 1 POWER OUTLETS SHALL BE CONNECTED TO NEW 20A BRANCH CIRCUIT RUN TO EXISTING PANEL PP2-ELECTRICAL ROOM 210. NO BRANCH CIRCUIT SHALL BE LOADED BEYOND 14 AMPERES AT 120 VOLTS, LOADS CALCULATED PER NEC 210 AND 220.
- 2 EXISTING POWER IN THIS AREA SHALL REMAIN IN PLACE AND FUNCTIONING. RECONNECT TO NEW BRANCH CIRCUIT IF NECESSARY.
- 3 FURNITURE POWER SYSTEM SHALL BE CONNECTED TO (3) NEW 20A BRANCH CIRCUIT RUN TO EXISTING PANEL PP2-ELECTRICAL ROOM 210. COORDINATE WITH FURNITURE INSTALLER, FURNITURE IS A 5 WIRE, 3 CIRCUIT SYSTEM, NO BRANCH CIRCUIT SHALL BE LOADED BEYOND 14 AMPERES AT 120 VOLTS, LOADS CALCULATED PER NEC 210 AND 220.
- 4 NEW RTU SHALL BE POWERED THROUGH 480V PANEL HMDP. 20A 3 POLE BREAKER, GE SPECTRA SERIES PANELBOARD. USE SPACE FORMERLY FOR BATTERY CHARGERS.

SERVER ROOM EQUIPMENT

- A. (1) OPEN RACK 20W X 24D X 86H-FURN/INSTALL BY CONTRACTOR
- B. (1) SERVER RACK 23W X 33D X 81H-RACK AND EQUIPMENT FURN/INSTALLED BY OWNER
- C. PROVIDE 120/208, 1PHASE EATON 10kVA UPS, EATON CAT#K41011 UNIT SHALL BE INSTALLED TO SUPPLY NEW "SP" PANEL WITHIN SERVER ROOM IN CASE OF POWER FAILURE. FURN/INSTALLED BY CONTRACTOR
- D. (2) HONEYWELL SECURITY FIELD PANELS, SEE DETAIL "E2" SHEET E2.21. CONTRACTOR SHALL FURNISH AND INSTALL ACCESS CONTROLS AND RELATED EQUIPMENT AS SPECIFIED BY GHT AND NOTED IN DOOR/FRAME/HARDWARE SCHEDULE.
- E. WALL UNIT E-141 BOX 17W X 20 X 12H
- F. FAIRPOINT FIBER DEMARC BY OWNER, POWERED BY CONTRACTOR
- G. SIEMENS PHONE SYSTEM MOUNTED IN RACK "A" BY OWNER
- H. ELECTRICAL CONTRACTOR SHALL INSTALL (3) POWER DISTRIBUTION UNITS FOR SERVER RACK, FURNISHED BY OWNER RECEPTACLES FOR PDU SHALL BE CEILING MOUNTED, TWIST LOCK PLUGS L5-20P.
- J. PROVIDE 12"x4" ALUMINUM LADDER TRAY MOUNTED ABOVE THE RACKS IN SERVER ROOM.

CONTRACTOR SHALL COORDINATE ALL EQUIPMENT, RACKS, DATA AND POWER LOCATIONS, IN SERVER ROOM, WITH OWNER/IT DEPARTMENT PRIOR TO ROUGH IN.

FUTURE SP-11
211



E2 HONEYWELL PANEL TYPICAL LAYOUT

SCALE: N.T.S.

E1 SECOND FLOOR POWER PLAN- AREA "A"
SCALE: 1/8" = 1'-0"