

DESIGNER

OWNER

UNITIL

6 LIBERTY LANE WEST
HAMPTON, NEW HAMPSHIRE
03842

PROJECT

NORTHERN UTILITIES, INC.
FIT-UP

400 RIVERSIDE INDUSTRIAL PARKWAY
PORTLAND, MAINE 04101

DRAWING

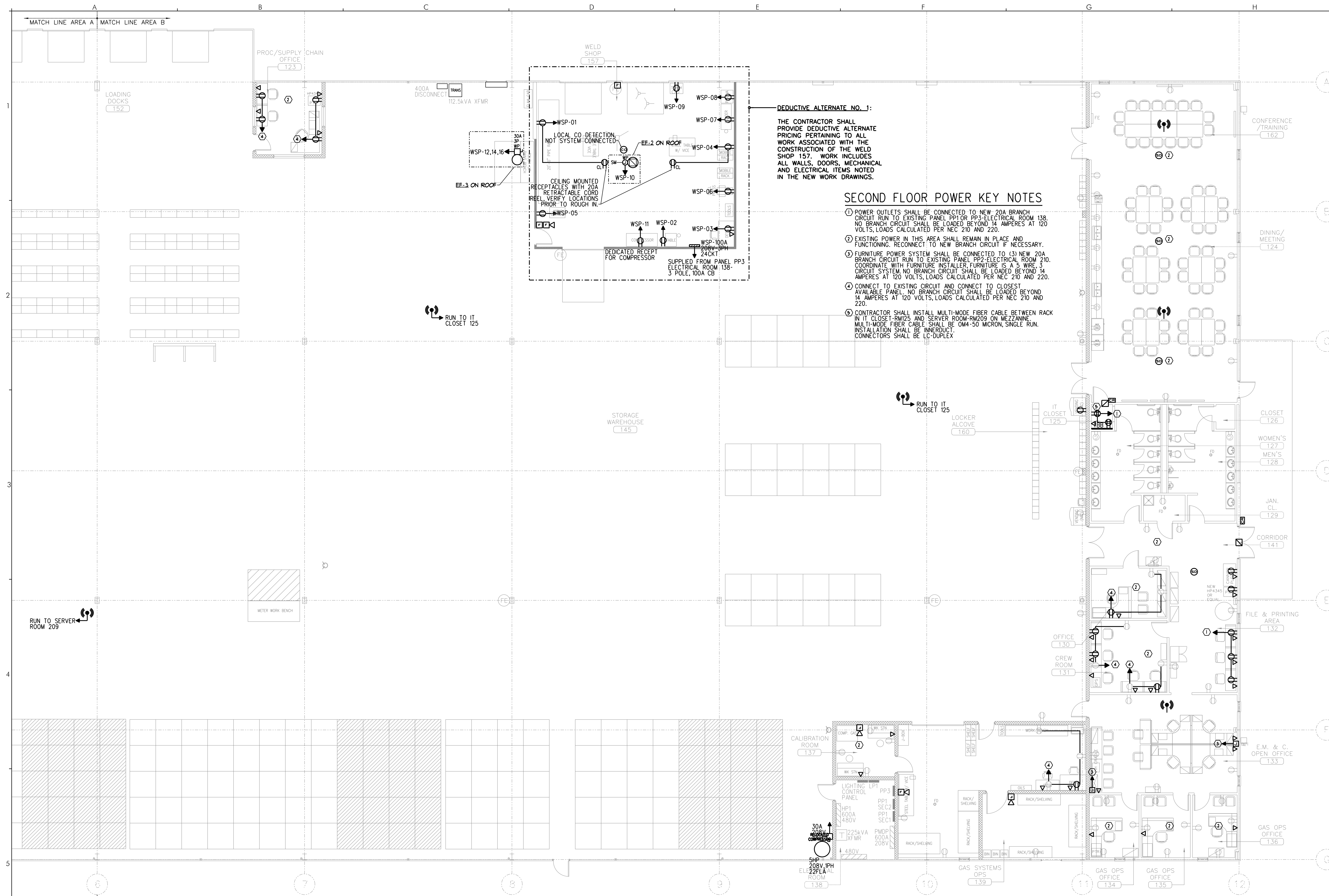
FIRST FLOOR
POWER PLAN
AREA "B"

REVISIONS

DRAWING NUMBER

E2.12

SCALE: 1/8" = 1'-0"
DATE: 04/17/15



DEDUCTIVE ALTERNATE NO. 1:
THE CONTRACTOR SHALL PROVIDE DEDUCTIVE ALTERNATE PRICING PERTAINING TO ALL WORK ASSOCIATED WITH THE CONSTRUCTION OF THE WELD SHOP 157. WORK INCLUDES ALL WALLS, DOORS, MECHANICAL AND ELECTRICAL ITEMS NOTED IN THE NEW WORK DRAWINGS.

SECOND FLOOR POWER KEY NOTES

- 1 POWER OUTLETS SHALL BE CONNECTED TO NEW 20A BRANCH CIRCUIT RUN TO EXISTING PANEL PP1 OR PP3-ELECTRICAL ROOM 138. NO BRANCH CIRCUIT SHALL BE LOADED BEYOND 14 AMPERES AT 120 VOLTS, LOADS CALCULATED PER NEC 210 AND 220.
- 2 EXISTING POWER IN THIS AREA SHALL REMAIN IN PLACE AND FUNCTIONING. RECONNECT TO NEW BRANCH CIRCUIT IF NECESSARY.
- 3 FURNITURE POWER SYSTEM SHALL BE CONNECTED TO (3) NEW 20A BRANCH CIRCUIT RUN TO EXISTING PANEL PP2-ELECTRICAL ROOM 210. COORDINATE WITH FURNITURE INSTALLER, FURNITURE IS A 5 WIRE, 3 CIRCUIT SYSTEM, NO BRANCH CIRCUIT SHALL BE LOADED BEYOND 14 AMPERES AT 120 VOLTS, LOADS CALCULATED PER NEC 210 AND 220.
- 4 CONNECT TO EXISTING CIRCUIT AND CONNECT TO CLOSET AVAILABLE PANEL, NO BRANCH CIRCUIT SHALL BE LOADED BEYOND 14 AMPERES AT 120 VOLTS, LOADS CALCULATED PER NEC 210 AND 220.
- 5 CONTRACTOR SHALL INSTALL MULTI-MODE FIBER CABLE BETWEEN RACK IN IT CLOSET-RM125 AND SERVER ROOM-RM209 ON MEZZANINE. MULTI-MODE FIBER CABLE SHALL BE OM4-50 MICRON, SINGLE RUN. INSTALLATION SHALL BE INNERDUCT. CONNECTORS SHALL BE LC-DUPLEX.