

DESIGNER

OWNER

UNITIL

6 LIBERTY LANE WEST
HAMPTON, NEW HAMPSHIRE
03842

PROJECT

NORTHERN
UTILITIES, INC.
FIT-UP

400 RIVERSIDE INDUSTRIAL PARKWAY
PORTLAND, MAINE 04101

DRAWING

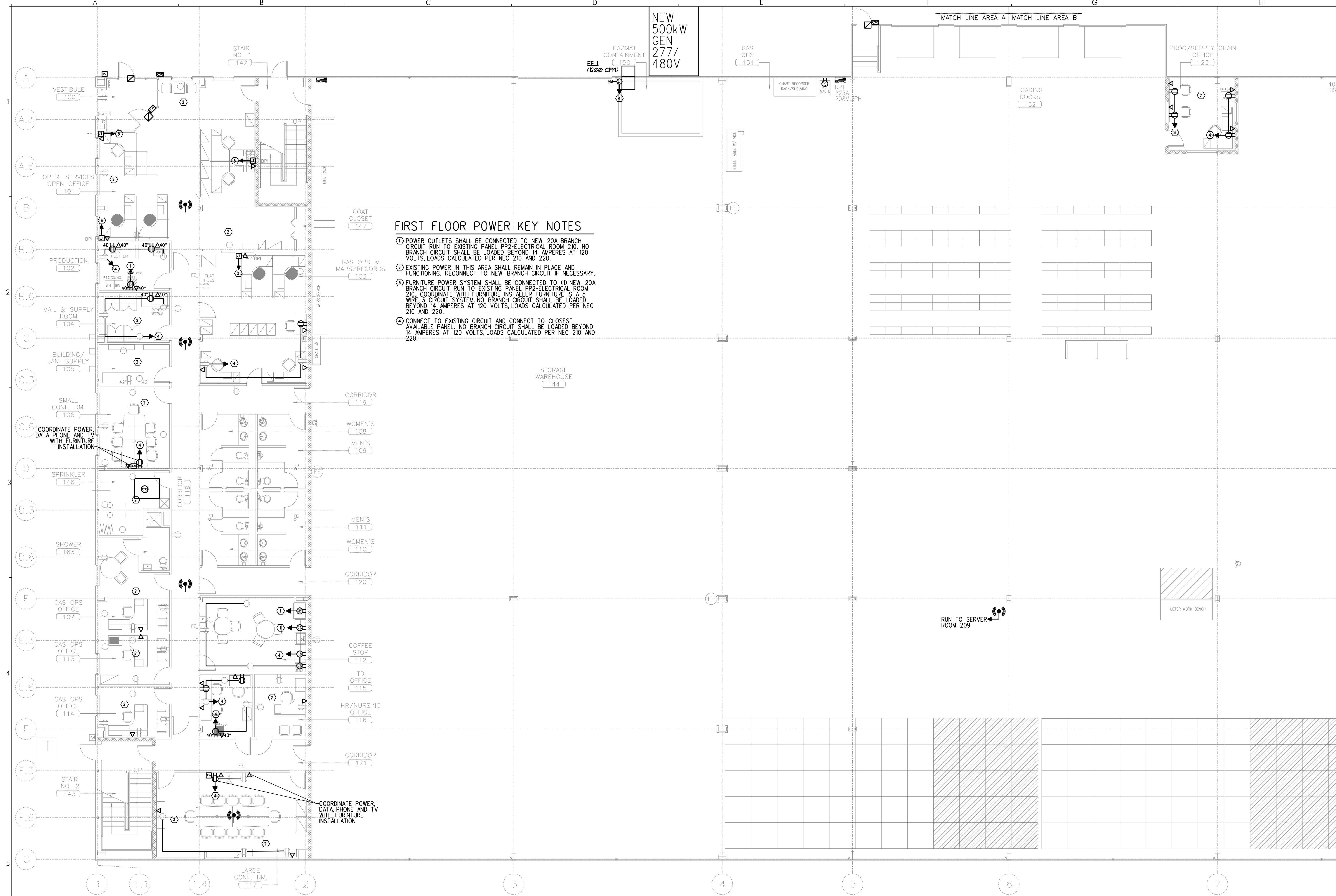
FIRST FLOOR
POWER PLAN
AREA "A"

REVISIONS

DRAWING NUMBER

E2.11

SCALE: 1/8" = 1'-0"
DATE: 04/17/15



FIRST FLOOR POWER KEY NOTES

- ① POWER OUTLETS SHALL BE CONNECTED TO NEW 20A BRANCH CIRCUIT RUN TO EXISTING PANEL PP2-ELECTRICAL ROOM 210. NO BRANCH CIRCUIT SHALL BE LOADED BEYOND 14 AMPERES AT 120 VOLTS. LOADS CALCULATED PER NEC 210 AND 220.
- ② EXISTING POWER IN THIS AREA SHALL REMAIN IN PLACE AND FUNCTIONING. RECONNECT TO NEW BRANCH CIRCUIT IF NECESSARY.
- ③ FURNITURE POWER SYSTEM SHALL BE CONNECTED TO ① NEW 20A BRANCH CIRCUIT RUN TO EXISTING PANEL PP2-ELECTRICAL ROOM 210. COORDINATE WITH FURNITURE INSTALLER. FURNITURE IS A 5 WIRE 3 CIRCUIT SYSTEM. NO BRANCH CIRCUIT SHALL BE LOADED BEYOND 14 AMPERES AT 120 VOLTS. LOADS CALCULATED PER NEC 210 AND 220.
- ④ CONNECT TO EXISTING CIRCUIT AND CONNECT TO CLOSEST AVAILABLE PANEL. NO BRANCH CIRCUIT SHALL BE LOADED BEYOND 14 AMPERES AT 120 VOLTS. LOADS CALCULATED PER NEC 210 AND 220.

© 2015 CWS Architects, Inc. All Rights Reserved. No part of this drawing may be reproduced without the written permission of CWS Architects, Inc.