

DESIGNER

OWNER

UNITIL

6 LIBERTY LANE WEST  
HAMPTON, NEW HAMPSHIRE  
03842

PROJECT

NORTHERN  
UTILITIES, INC.  
FIT-UP

400 RIVERSIDE INDUSTRIAL PARKWAY  
PORTLAND, MAINE 04101

DRAWING

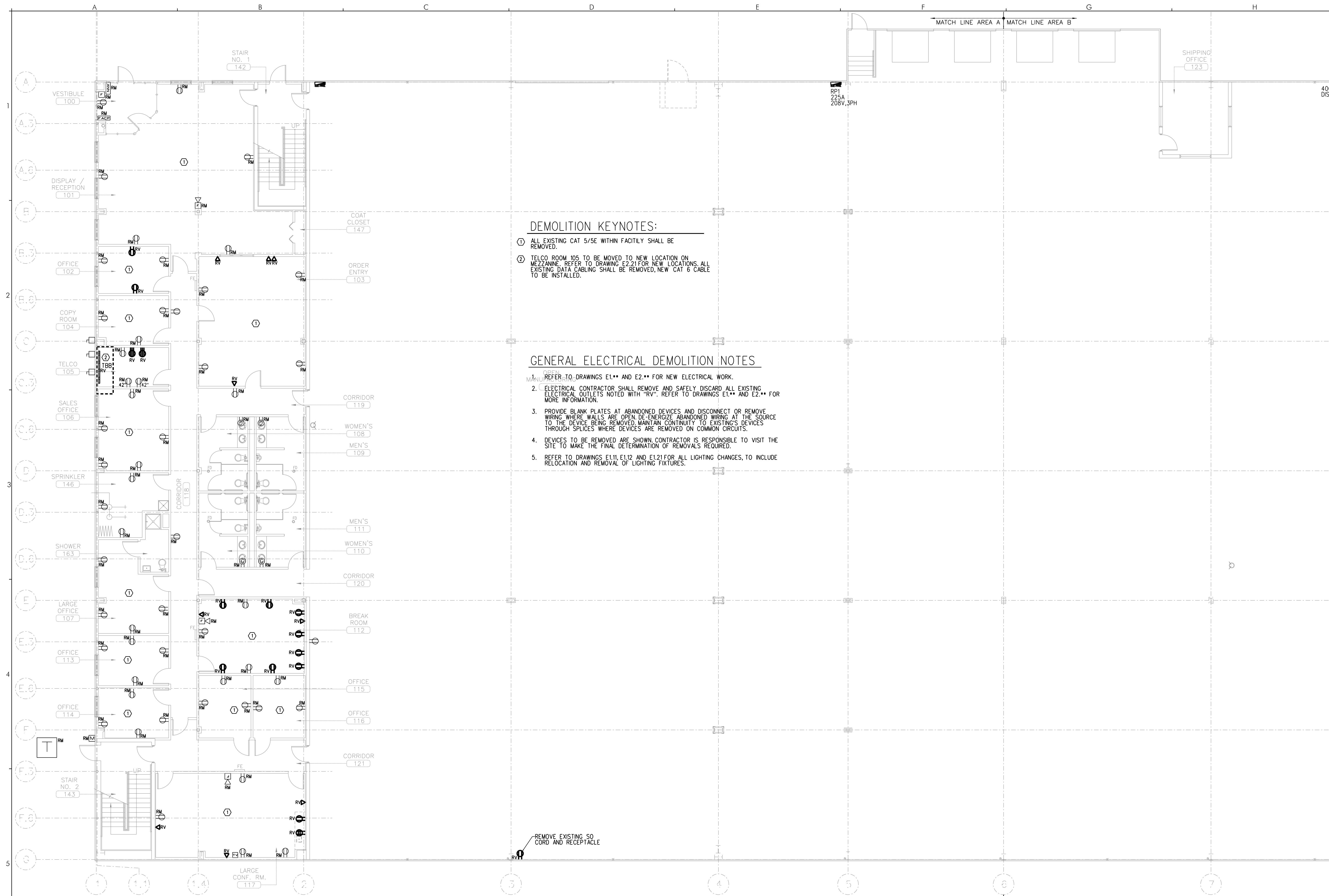
FIRST FLOOR  
DEMO POWER  
PLAN-AREA "A"

REVISIONS

DRAWING NUMBER

**DE1.11**

SCALE: 1/8" = 1'-0"  
DATE: 04/17/15



**DEMOLITION KEYNOTES:**

- ① ALL EXISTING CAT 5/5E WITHIN FACILITY SHALL BE REMOVED.
- ② TELCO ROOM 105 TO BE MOVED TO NEW LOCATION ON MEZZANINE, REFER TO DRAWING E2.21 FOR NEW LOCATIONS. ALL EXISTING DATA CABLING SHALL BE REMOVED, NEW CAT 6 CABLE TO BE INSTALLED.

**GENERAL ELECTRICAL DEMOLITION NOTES**

- 1. REFER TO DRAWINGS E1.\*\* AND E2.\*\* FOR NEW ELECTRICAL WORK.
- 2. ELECTRICAL CONTRACTOR SHALL REMOVE AND SAFELY DISCARD ALL EXISTING ELECTRICAL OUTLETS NOTED WITH "RV". REFER TO DRAWINGS E1.\*\* AND E2.\*\* FOR MORE INFORMATION.
- 3. PROVIDE BLANK PLATES AT ABANDONED DEVICES AND DISCONNECT OR REMOVE WIRING WHERE WALLS ARE OPEN. DE-ENERGIZE ABANDONED WIRING AT THE SOURCE TO THE DEVICE BEING REMOVED. MAINTAIN CONTINUITY TO EXISTING DEVICES THROUGH SPLICES WHERE DEVICES ARE REMOVED ON COMMON CIRCUITS.
- 4. DEVICES TO BE REMOVED ARE SHOWN. CONTRACTOR IS RESPONSIBLE TO VISIT THE SITE TO MAKE THE FINAL DETERMINATION OF REMOVALS REQUIRED.
- 5. REFER TO DRAWINGS E1.11, E1.12 AND E1.21 FOR ALL LIGHTING CHANGES, TO INCLUDE RELOCATION AND REMOVAL OF LIGHTING FIXTURES.

REMOVE EXISTING SO CORD AND RECEPTACLE

MATCH LINE AREA A MATCH LINE AREA B

MATCH LINE AREA A MATCH LINE AREA B