

**CWS ARCHITECTS**  
ARCHITECTURE | INTERIOR DESIGN  
434 CUMBERLAND AVENUE  
PORTLAND, MAINE 04101  
P: 207.774.4011  
F: 207.774.4011  
WWW.CWSARCH.COM

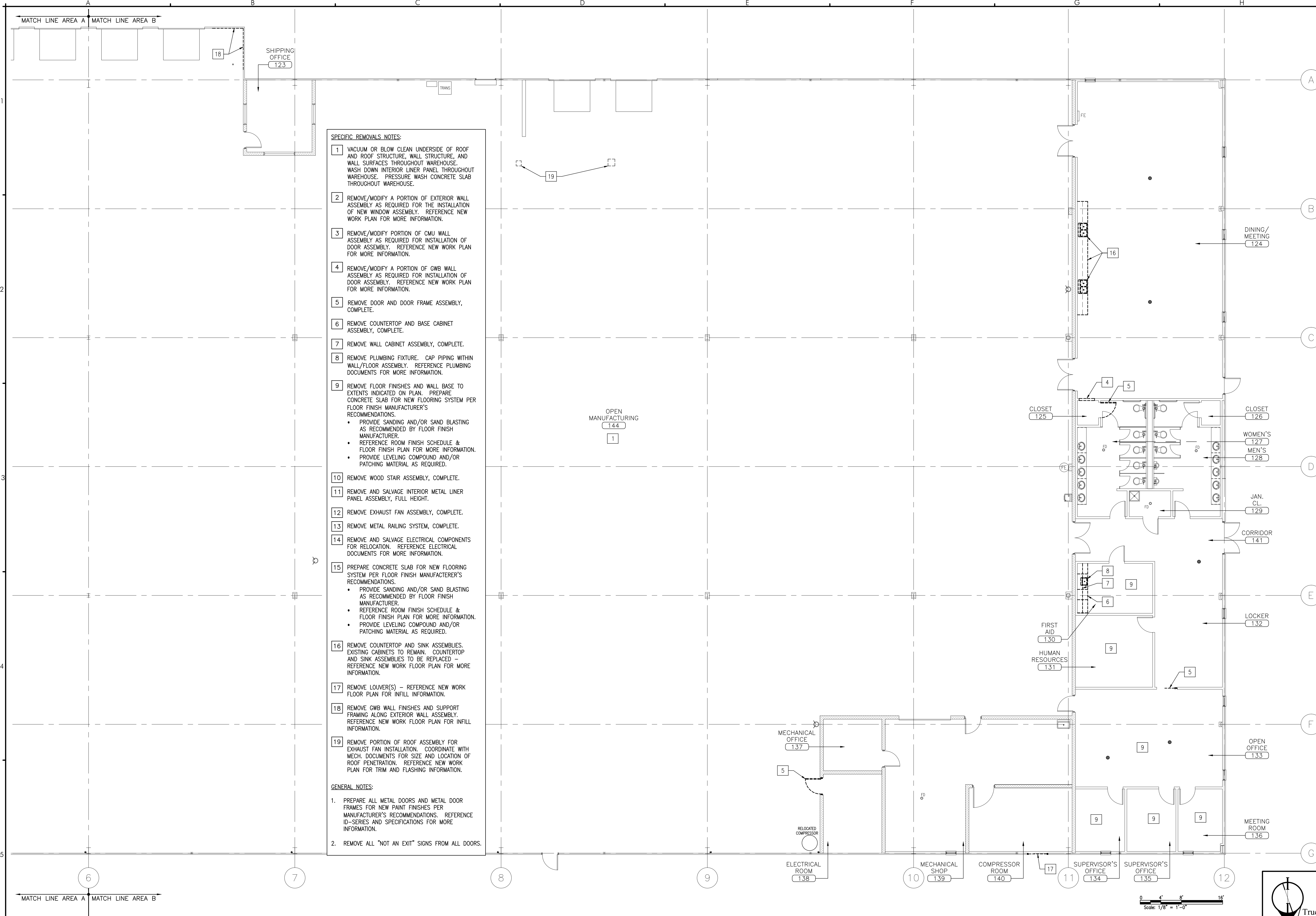
**OWNER**  
**UNITIL**  
6 LIBERTY LANE WEST  
HAMPTON, NEW HAMPSHIRE  
03842

**PROJECT**  
**NORTHERN UTILITIES, INC.**  
**FIT-UP**  
400 RIVERSIDE INDUSTRIAL PARKWAY  
PORTLAND, MAINE 04101

**DRAWING**  
**ENLARGED AREA "B" FIRST FLOOR REMOVALS PLAN**

REVISIONS

**DRAWING NUMBER**  
**AD1.12**  
SCALE: 1/8" = 1'-0"  
DATE: 04/17/15



- SPECIFIC REMOVALS NOTES:**
- VACUUM OR BLOW CLEAN UNDERSIDE OF ROOF AND ROOF STRUCTURE, WALL STRUCTURE, AND WALL SURFACES THROUGHOUT WAREHOUSE. WASH DOWN INTERIOR LINER PANEL THROUGHOUT WAREHOUSE. PRESSURE WASH CONCRETE SLAB THROUGHOUT WAREHOUSE.
  - REMOVE/MODIFY A PORTION OF EXTERIOR WALL ASSEMBLY AS REQUIRED FOR THE INSTALLATION OF NEW WINDOW ASSEMBLY. REFERENCE NEW WORK PLAN FOR MORE INFORMATION.
  - REMOVE/MODIFY PORTION OF CMU WALL ASSEMBLY AS REQUIRED FOR INSTALLATION OF DOOR ASSEMBLY. REFERENCE NEW WORK PLAN FOR MORE INFORMATION.
  - REMOVE/MODIFY A PORTION OF GWB WALL ASSEMBLY AS REQUIRED FOR INSTALLATION OF DOOR ASSEMBLY. REFERENCE NEW WORK PLAN FOR MORE INFORMATION.
  - REMOVE DOOR AND DOOR FRAME ASSEMBLY, COMPLETE.
  - REMOVE COUNTERTOP AND BASE CABINET ASSEMBLY, COMPLETE.
  - REMOVE WALL CABINET ASSEMBLY, COMPLETE.
  - REMOVE PLUMBING FIXTURE. CAP PIPING WITHIN WALL/FLOOR ASSEMBLY. REFERENCE PLUMBING DOCUMENTS FOR MORE INFORMATION.
  - REMOVE FLOOR FINISHES AND WALL BASE TO EXTENTS INDICATED ON PLAN. PREPARE CONCRETE SLAB FOR NEW FLOORING SYSTEM PER FLOOR FINISH MANUFACTURER'S RECOMMENDATIONS.
    - PROVIDE SANDING AND/OR SAND BLASTING AS RECOMMENDED BY FLOOR FINISH MANUFACTURER.
    - REFERENCE ROOM FINISH SCHEDULE & FLOOR FINISH PLAN FOR MORE INFORMATION.
    - PROVIDE LEVELING COMPOUND AND/OR PATCHING MATERIAL AS REQUIRED.
  - REMOVE WOOD STAIR ASSEMBLY, COMPLETE.
  - REMOVE AND SALVAGE INTERIOR METAL LINER PANEL ASSEMBLY, FULL HEIGHT.
  - REMOVE EXHAUST FAN ASSEMBLY, COMPLETE.
  - REMOVE METAL RAILING SYSTEM, COMPLETE.
  - REMOVE AND SALVAGE ELECTRICAL COMPONENTS FOR RELOCATION. REFERENCE ELECTRICAL DOCUMENTS FOR MORE INFORMATION.
  - PREPARE CONCRETE SLAB FOR NEW FLOORING SYSTEM PER FLOOR FINISH MANUFACTURER'S RECOMMENDATIONS.
    - PROVIDE SANDING AND/OR SAND BLASTING AS RECOMMENDED BY FLOOR FINISH MANUFACTURER.
    - REFERENCE ROOM FINISH SCHEDULE & FLOOR FINISH PLAN FOR MORE INFORMATION.
    - PROVIDE LEVELING COMPOUND AND/OR PATCHING MATERIAL AS REQUIRED.
  - REMOVE COUNTERTOP AND SINK ASSEMBLIES. EXISTING CABINETS TO REMAIN. COUNTERTOP AND SINK ASSEMBLIES TO BE REPLACED - REFERENCE NEW WORK FLOOR PLAN FOR MORE INFORMATION.
  - REMOVE LOUVER(S) - REFERENCE NEW WORK FLOOR PLAN FOR INFILL INFORMATION.
  - REMOVE GWB WALL FINISHES AND SUPPORT FRAMING ALONG EXTERIOR WALL ASSEMBLY. REFERENCE NEW WORK FLOOR PLAN FOR INFILL INFORMATION.
  - REMOVE PORTION OF ROOF ASSEMBLY FOR EXHAUST FAN INSTALLATION. COORDINATE WITH MECH. DOCUMENTS FOR SIZE AND LOCATION OF ROOF PENETRATION. REFERENCE NEW WORK PLAN FOR TRIM AND FLASHING INFORMATION.
- GENERAL NOTES:**
- PREPARE ALL METAL DOORS AND METAL DOOR FRAMES FOR NEW PAINT FINISHES PER MANUFACTURER'S RECOMMENDATIONS. REFERENCE ID-SERIES AND SPECIFICATIONS FOR MORE INFORMATION.
  - REMOVE ALL "NOT AN EXIT" SIGNS FROM ALL DOORS.

**A5 ENLARGED AREA "B" - FIRST FLOOR REMOVALS PLAN**  
REFERENCED FROM: SCALE: 1/8" = 1'-0"

