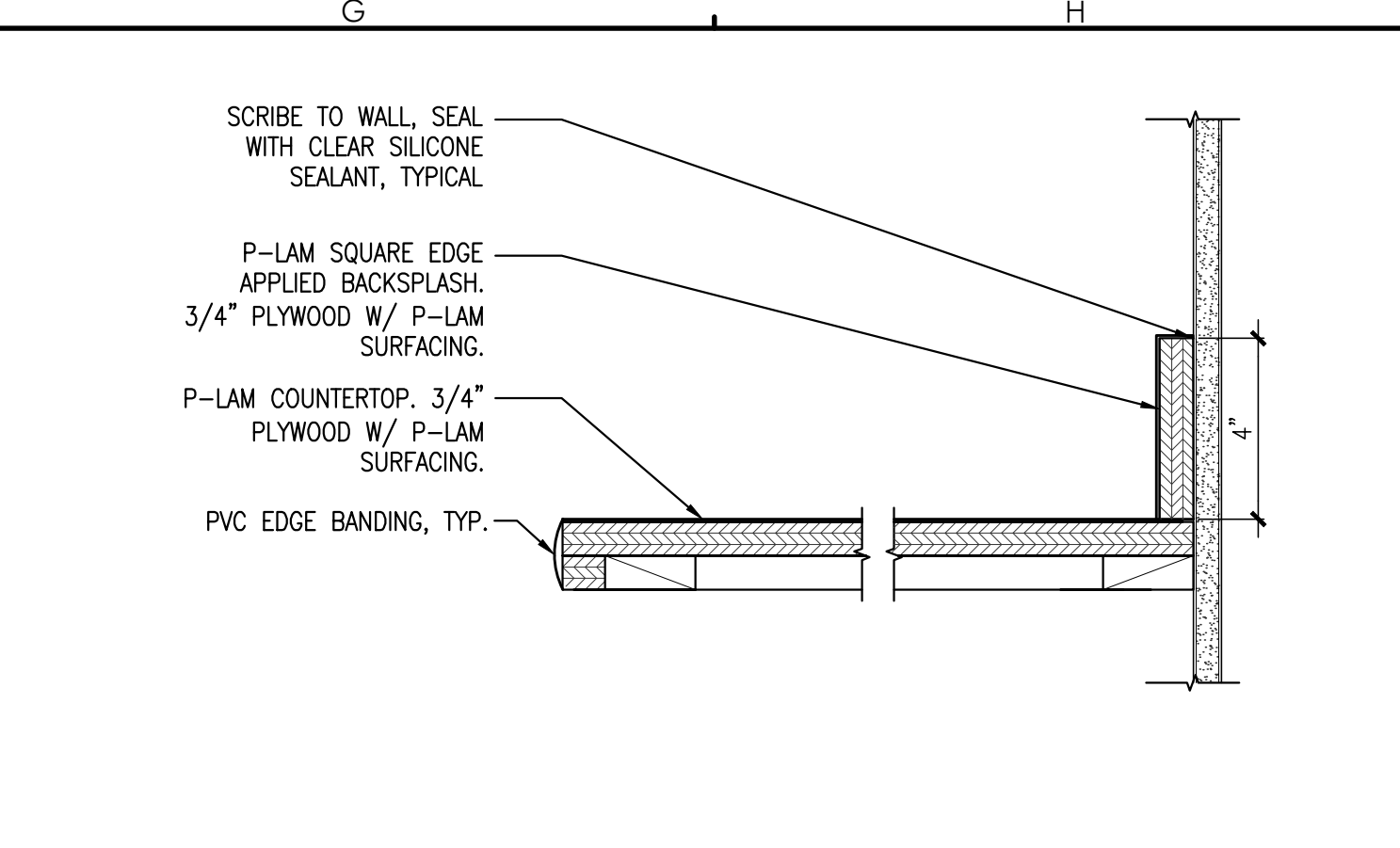
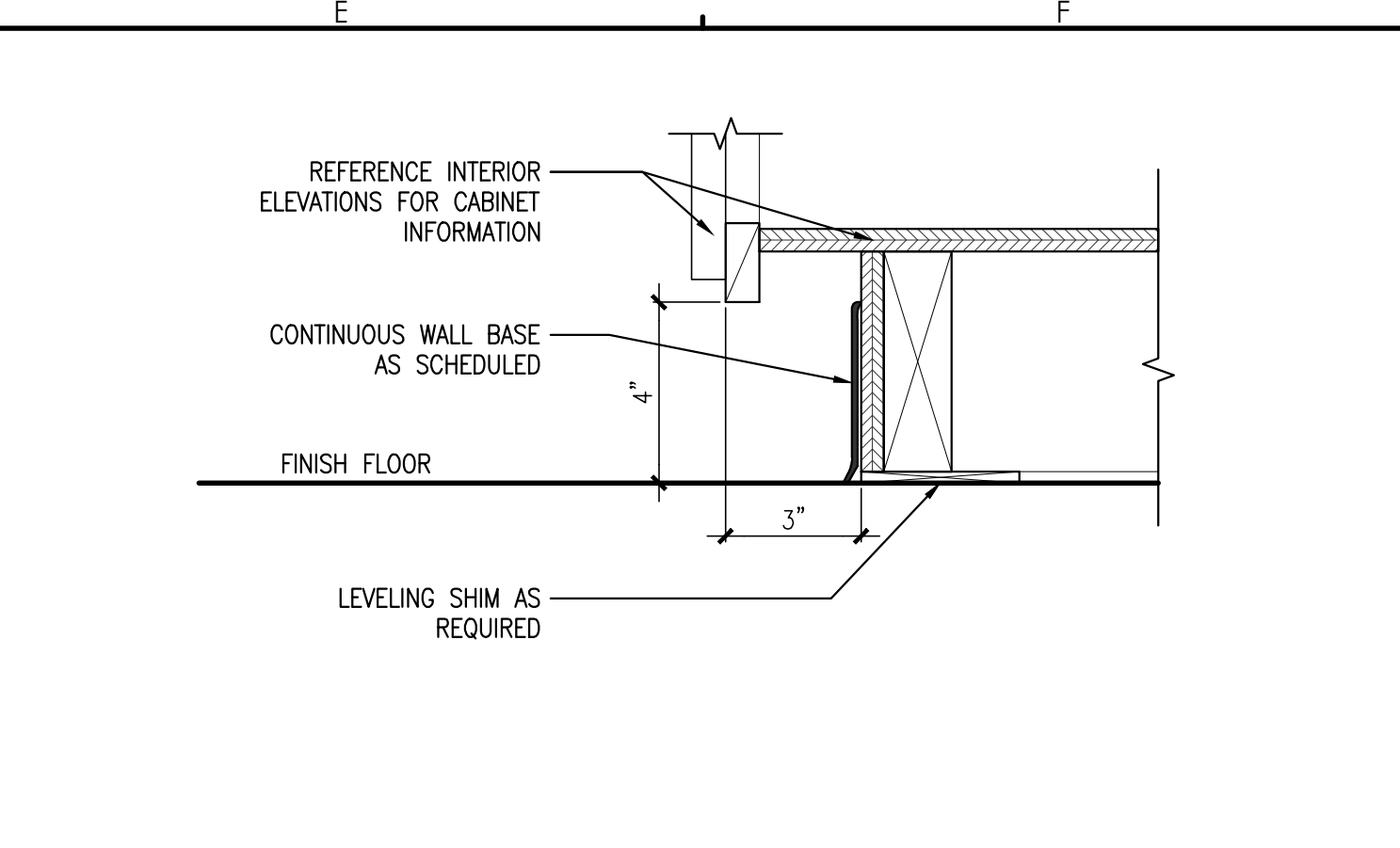


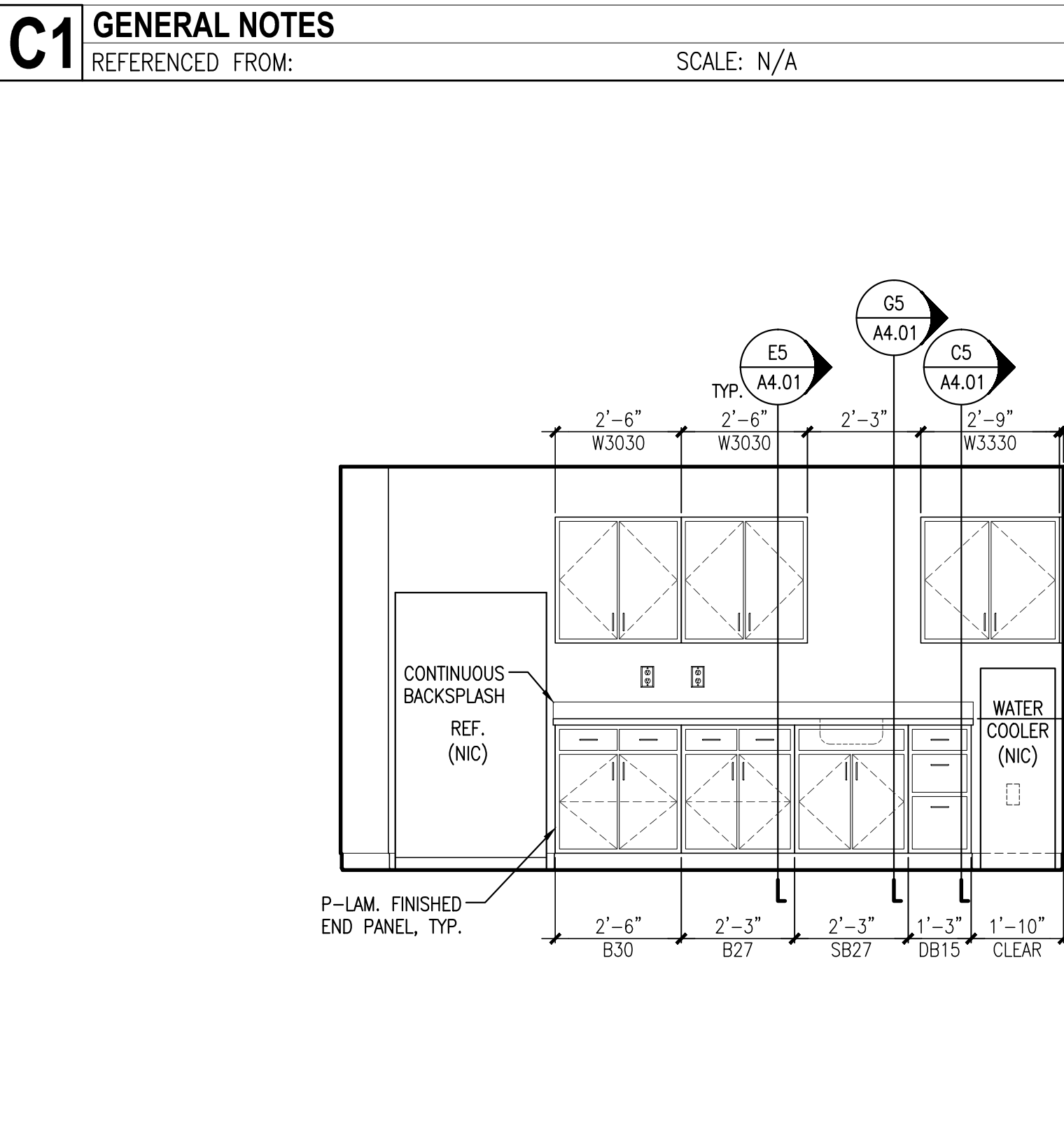
A1 NOT USED
 REFERENCED FROM: SCALE:

C1 GENERAL NOTES
 REFERENCED FROM: SCALE: N/A

GENERAL NOTES:
 1. REFERENCE ID-SERIES DRAWINGS FOR FINISH SELECTIONS.



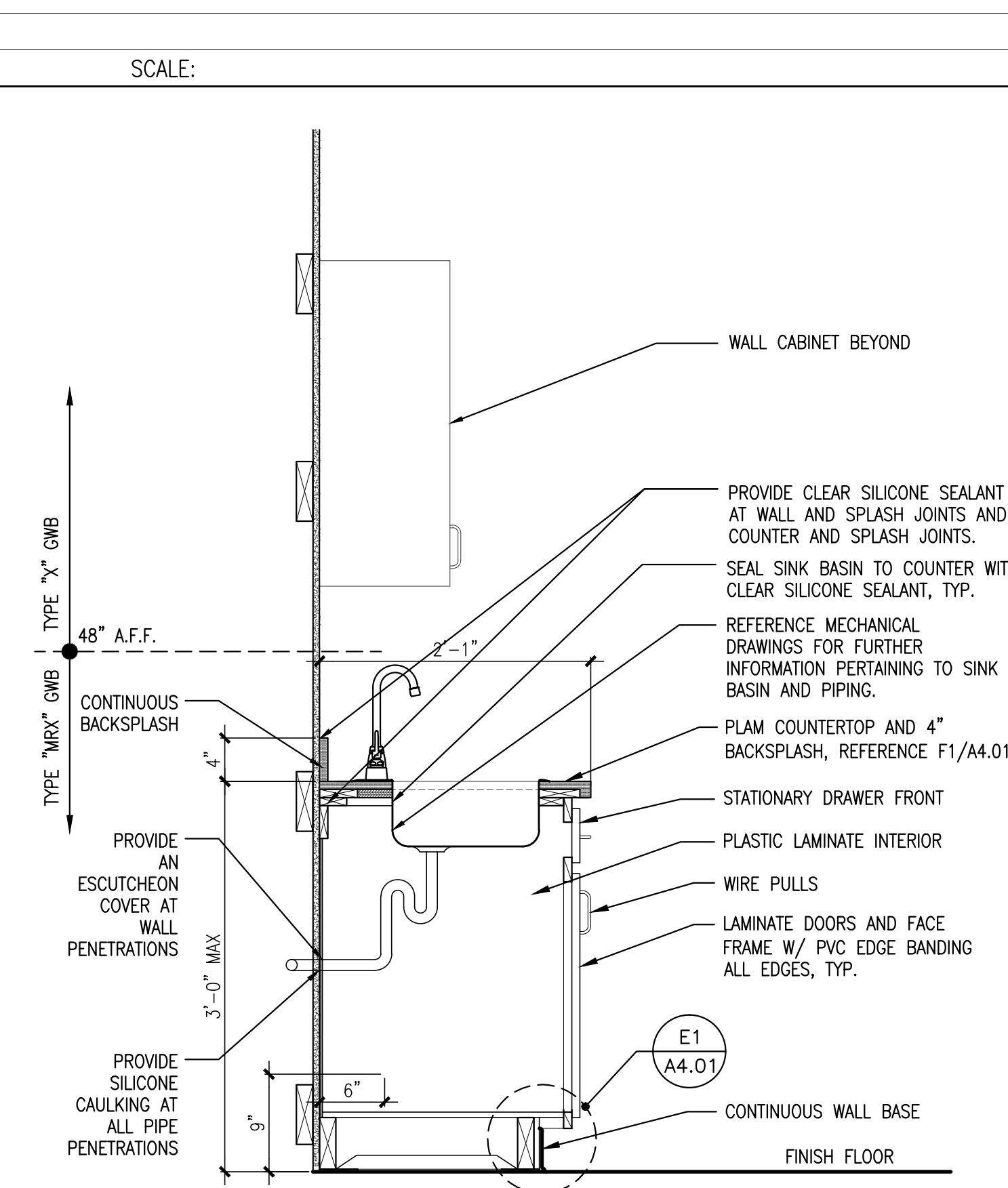
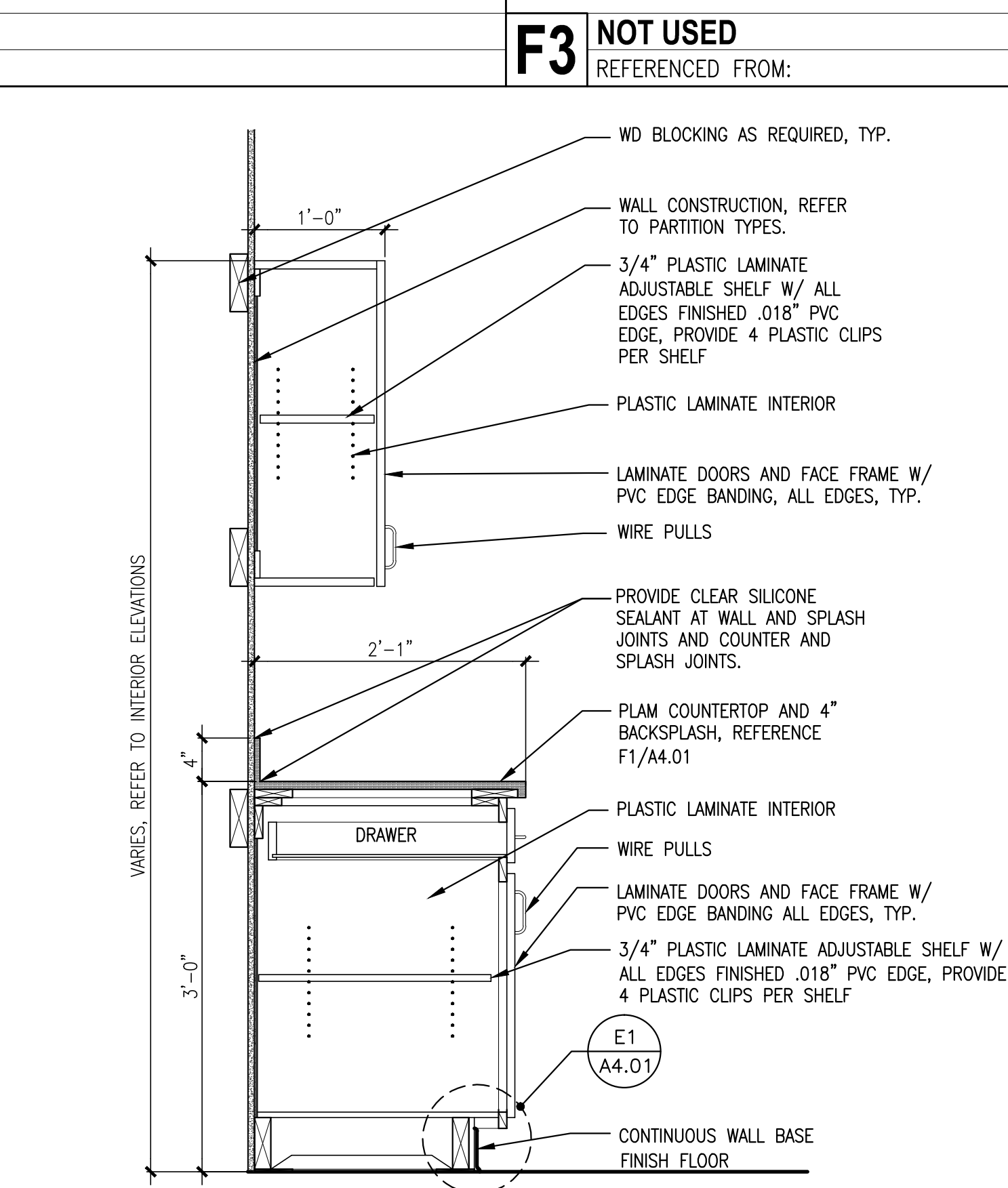
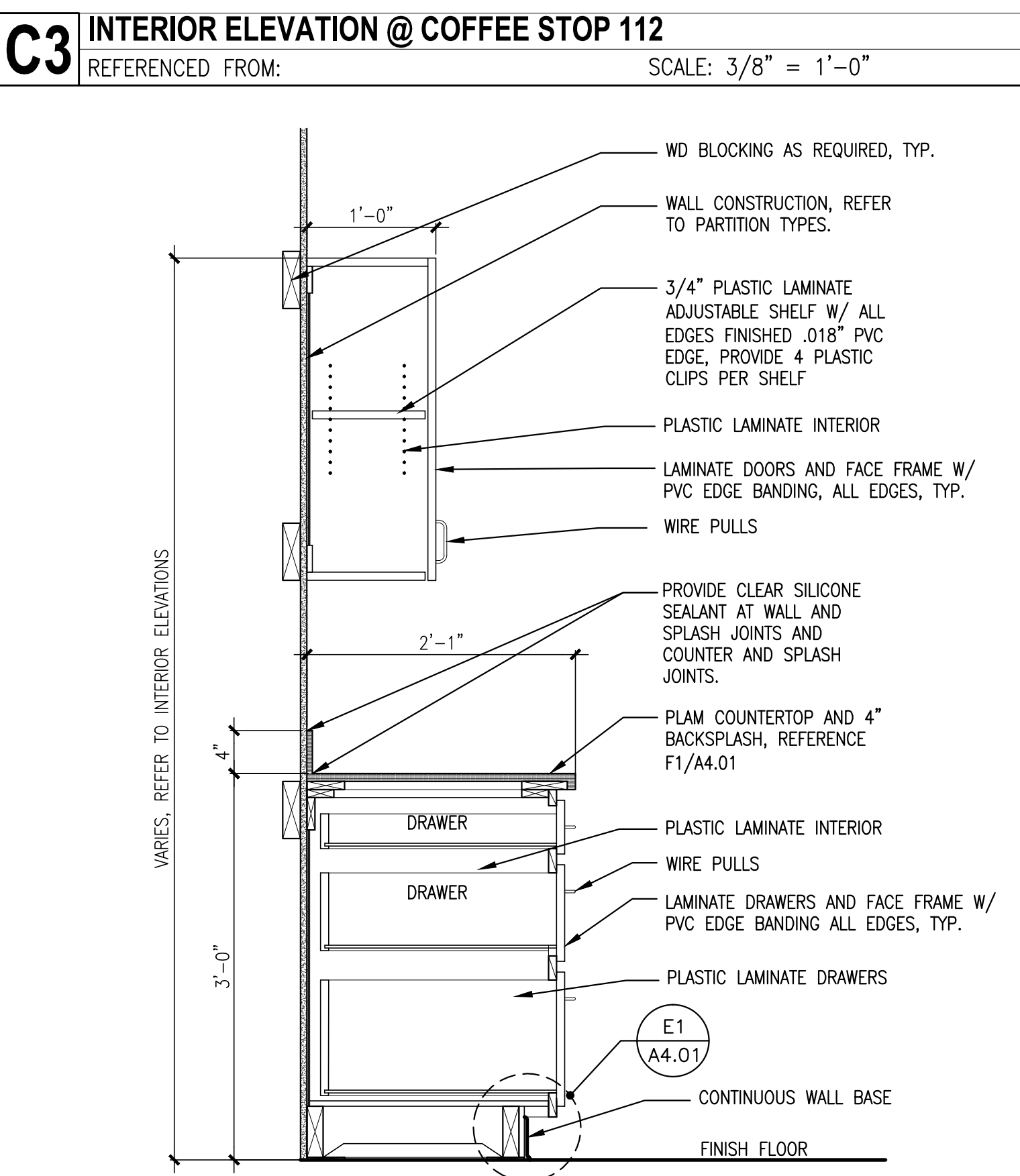
A3 NOT USED
 REFERENCED FROM: SCALE:



E1 TYPICAL BASE CABINET DETAIL
 REFERENCED FROM: SCALE: 3" = 1'-0"

F1 TYPICAL COUNTERTOP DETAIL
 REFERENCED FROM: SCALE: 3" = 1'-0"

A5 NOT USED
 REFERENCED FROM: SCALE:



A5 NOT USED
 REFERENCED FROM: SCALE:

C5 TYPICAL DETAIL @ DRAWER BASE CABINET
 REFERENCED FROM: SCALE: 1" = 1'-0"

E5 TYPICAL DETAIL @ BASE CABINET
 REFERENCED FROM: SCALE: 1" = 1'-0"

G5 TYPICAL DETAIL @ SINK BASE CABINET
 REFERENCED FROM: SCALE: 1" = 1'-0"

CWS ARCHITECTS

DESIGNER

OWNER

PROJECT

DRAWING

REVISIONS

DRAWING NUMBER

SCALE: AS NOTED
 DATE: 04/17/15

ISSUED FOR CITY OF PORTLAND PERMITTING

CWS
ARCHITECTS

LICENSED ARCHITECT
 GUY T. LABRECQUE, JR.
 No. 2568
 STATE OF MAINE

CWS ARCHITECTS
 ARCHITECTURE | INTERIOR DESIGN
 434 CUMBERLAND AVENUE
 PORTLAND, MAINE 04101
 P: 207.774.4011
 F: 207.774.4016
 WWW.CWSARCH.COM

UNITIL
 6 LIBERTY LANE WEST
 HAMPTON, NEW HAMPSHIRE
 03842

NORTHERN UTILITIES, INC.
 FIT-UP
 400 RIVERSIDE INDUSTRIAL PARKWAY
 PORTLAND, MAINE 04101

INTERIOR ELEVATIONS AND DETAILS

NO.	DATE	DESCRIPTION

DRAWING NUMBER
A4.01

© 2014 CWS Architects, Inc. All rights reserved. No part of this drawing may be reproduced without the written permission of CWS Architects, Inc.