

**MARK
MUELLER
ARCHITECTS**

A.I.A.

100 Commercial Street
Suite 205
Portland, Maine 04101
Phone/Fax 207.774.9057
Email:
rf@muellerarchitects.com

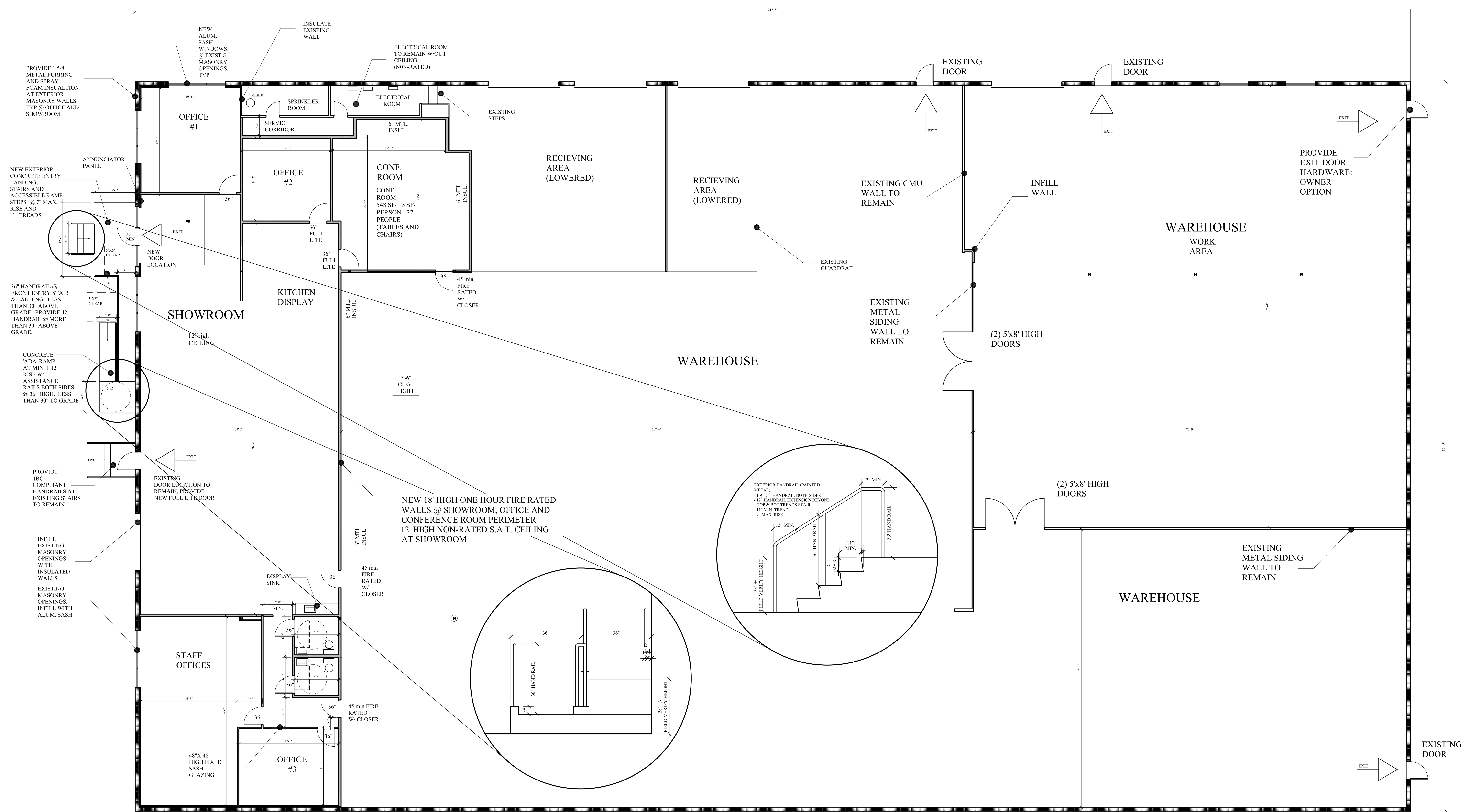
© COPYRIGHT 2014
MARK MUELLER ARCHITECTS

INTERIOR RENOVATIONS:
SURFACE CREATIONS OF MAINE

25 RICE STREET
PORTLAND, MAINE

FLOOR PLANS

REVISIONS
DATE
DEC. 2013
PROJECT
STONE CREATIONS
DRAWN BY
M.M.
CHECK BY
M.M.



NOTES:

1. TOTAL BUILDING AREA: 27,000 SF
2. 'IBC' USE GROUP : STORAGE-2/ BUSINESS
3. NFPA USE GROUP: INDUSTRIAL (LOW HAZARD)/ BUSINESS
4. MINIMUM CONSTRUCTION TYPE: NONE
5. MAXIMUM TRAVEL DISTANCE TO EXITS (SPRINKLERED): 250'-0"
6. WAREHOUSE WORK AREA SHALL MEET : NFPA 91, STANDARD EXHAUST FOR NON-COMBUSTIBLE PARTICULATE SOLIDS
7. A LIFE SAFETY ACCESSMENT REPORT AND A REMEDIATION PLAN SHALL BE PROVIDED BY A CITY OF PORTLAND CERTIFIED LIFE SAFETY CONTRACTOR. THE PLAN SHALL BE SUBMITTED TO AND APPROVED BY THE PORTLAND FIRE DEPARTMENT PRIOR TO WORK.
8. A NFPA CERTIFIED SPRINKLER CONTRACTOR SHALL PROVIDE AN ASSESSMENT AND REMEDIATION PLAN OF THE EXISTING SYSTEM. THE SYSTEM SHALL MEET THE NFPA 13.

FIRST FLOOR PLAN
SCALE: 1/8" = 1'-0"

REVISED: FEBRUARY 07, 2014
BUILDING PERMIT SET: JANUARY 3, 2014

A-1.2