



**MARK
MUELLER
ARCHITECTS**

A.I.A.

100 Commercial Street
Suite 205
Portland, Maine 04101
Phone/Fax 207.774.9057
Email:
rf@muellerarchitects.com

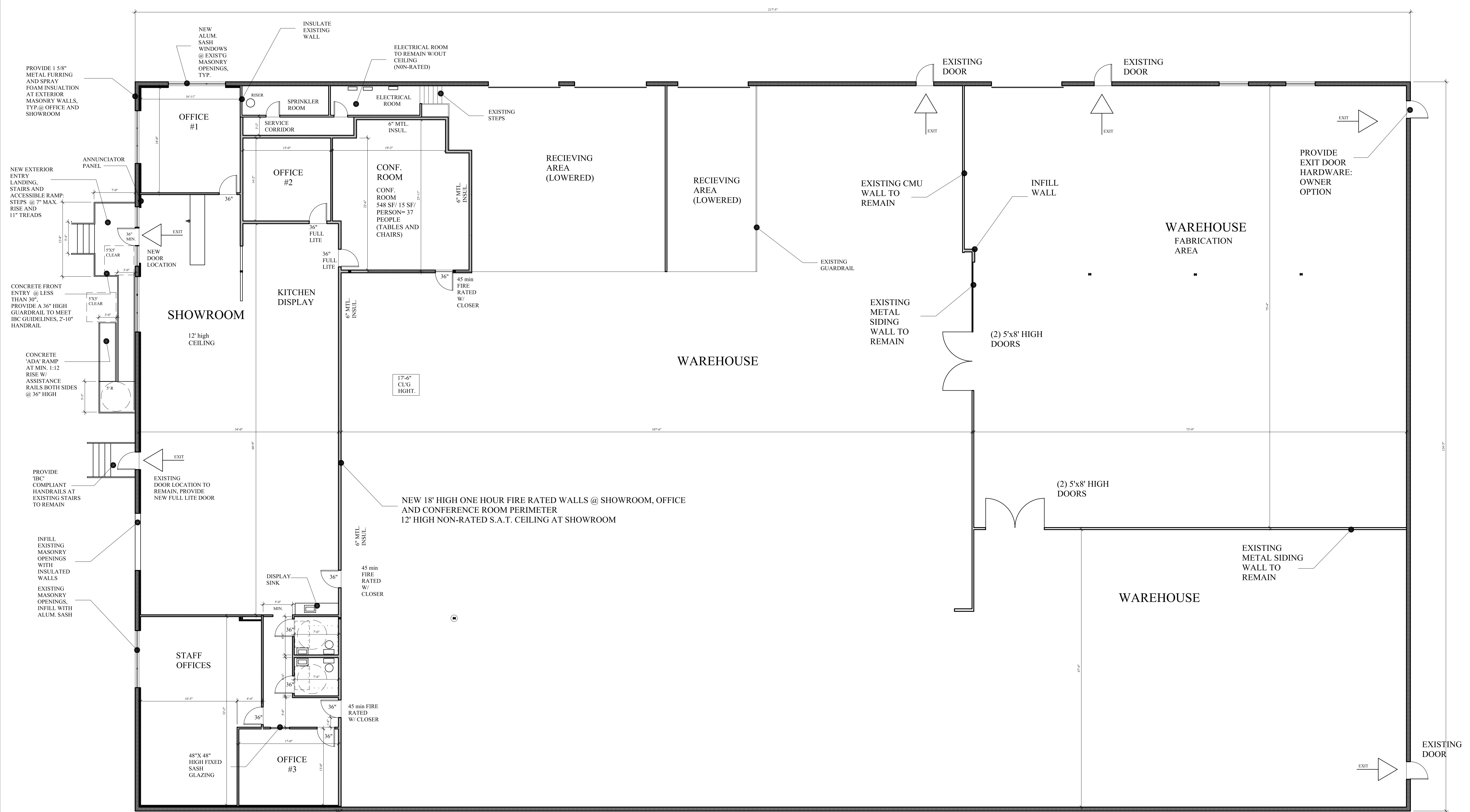
© COPYRIGHT 2013
MARK MUELLER ARCHITECTS

INTERIOR RENOVATIONS:
SURFACE CREATIONS OF MAINE
25 RICE STREET
PORTLAND, MAINE

FLOOR PLANS

REVISIONS	DATE
	DEC. 2013
PROJECT	STONE CREATIONS
DRAWN BY	MJM
CHECK BY	MJM

A-1.2



NOTES:

1. TOTAL BUILDING AREA: 26,500 SF
2. 'IBC' USE GROUP : FACTORY-2, BUSINESS
3. NFPA USE GROUP: INDUSTRIAL (LOW HAZARD)
4. MINIMUM CONSTRUCTION TYPE: NONE
5. MAXIMUM TRAVEL DISTANCE TO EXITS (SPRINKLERED): 250'-0"
6. FABRICATION AREA SHALL MEET : NFPA 91, STANDARD EXHAUST FOR NON-COMBUSTIBLE PARTICULATE SOLIDS

7. A LIFE SAFETY ACCESSMENT REPORT AND A REMEDIATION PLAN SHALL BE PROVIDED BY A CITY OF PORTLAND CERTIFIED LIFE SAFETY CONTRACTOR. THE PLAN SHALL BE SUBMITTED TO AND APPROVED BY THE PORTLAND FIRE DEPARTMENT PRIOR TO WORK.
8. A NFPA CERTIFIED SPRINKLER CONTRACTOR SHALL PROVIDE AN ASSESSMENT AND REMEDIATION PLAN OF THE EXISTING SYSTEM. THE SYSTEM SHALL MEET THE NFPA 13.

FIRST FLOOR PLAN

SCALE: 1/8" = 1'-0"

BUILDING PERMIT SET: JANUARY 3, 2014