

Gawron Turgeon ARCHITECTS
 29 Black Point Road
 Scarborough, Maine 04074
 www.gawronturgeon.com
 207-883-6307 tel 207-883-0361 fax

CAPRICORN OFFICE RENOVATION
 12 RICE STREET PORTLAND, MAINE

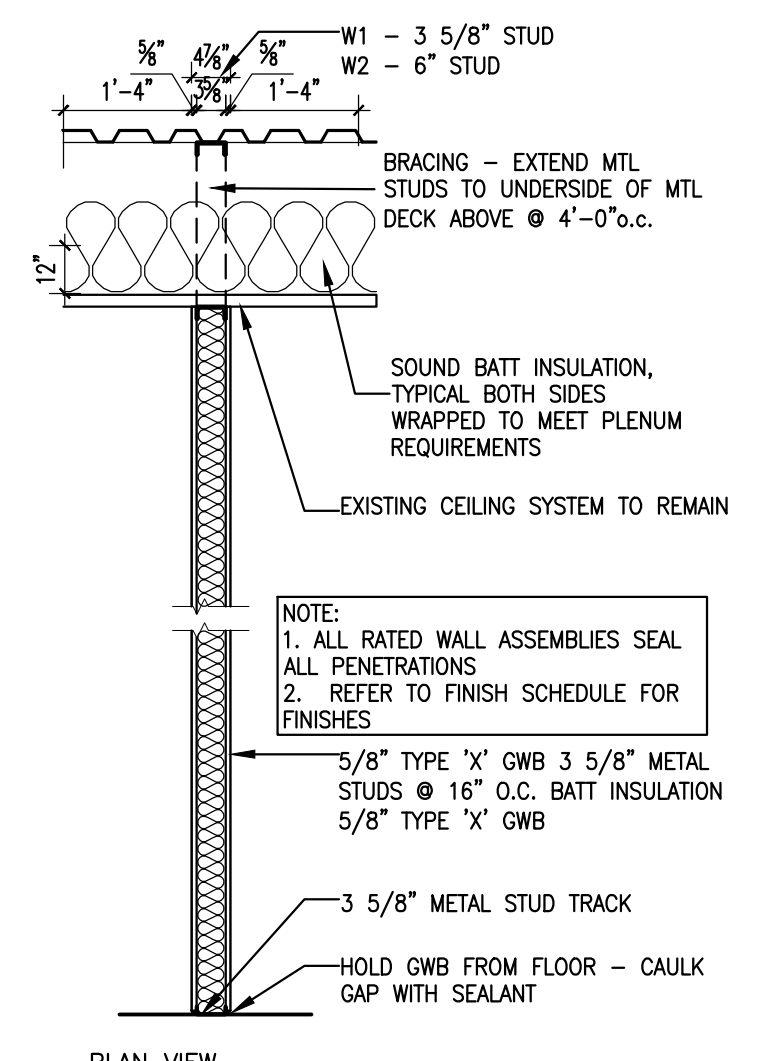
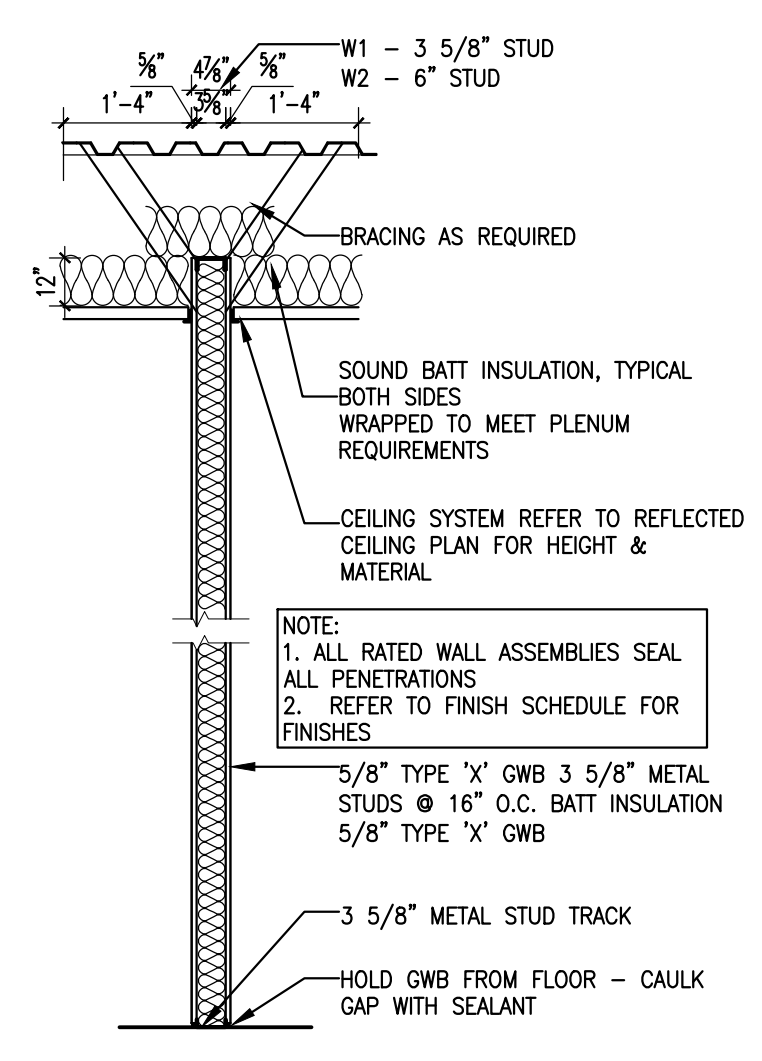
REVISIONS		
#	DATE	DESCRIPTION
1	11.15.13	ISSUED FOR PRICING
2	11.22.13	ISSUED FOR PRICING
3	12.05.13	ISSUED FOR PRICING

DATE:	12.05.13
PROJECT #:	100213
DRAWN BY:	DMR
CHECKED BY:	MT
DRAWING SCALE:	AS NOTED

SHEET TITLE
 GROUND FLOOR & MEZZANINE PLAN

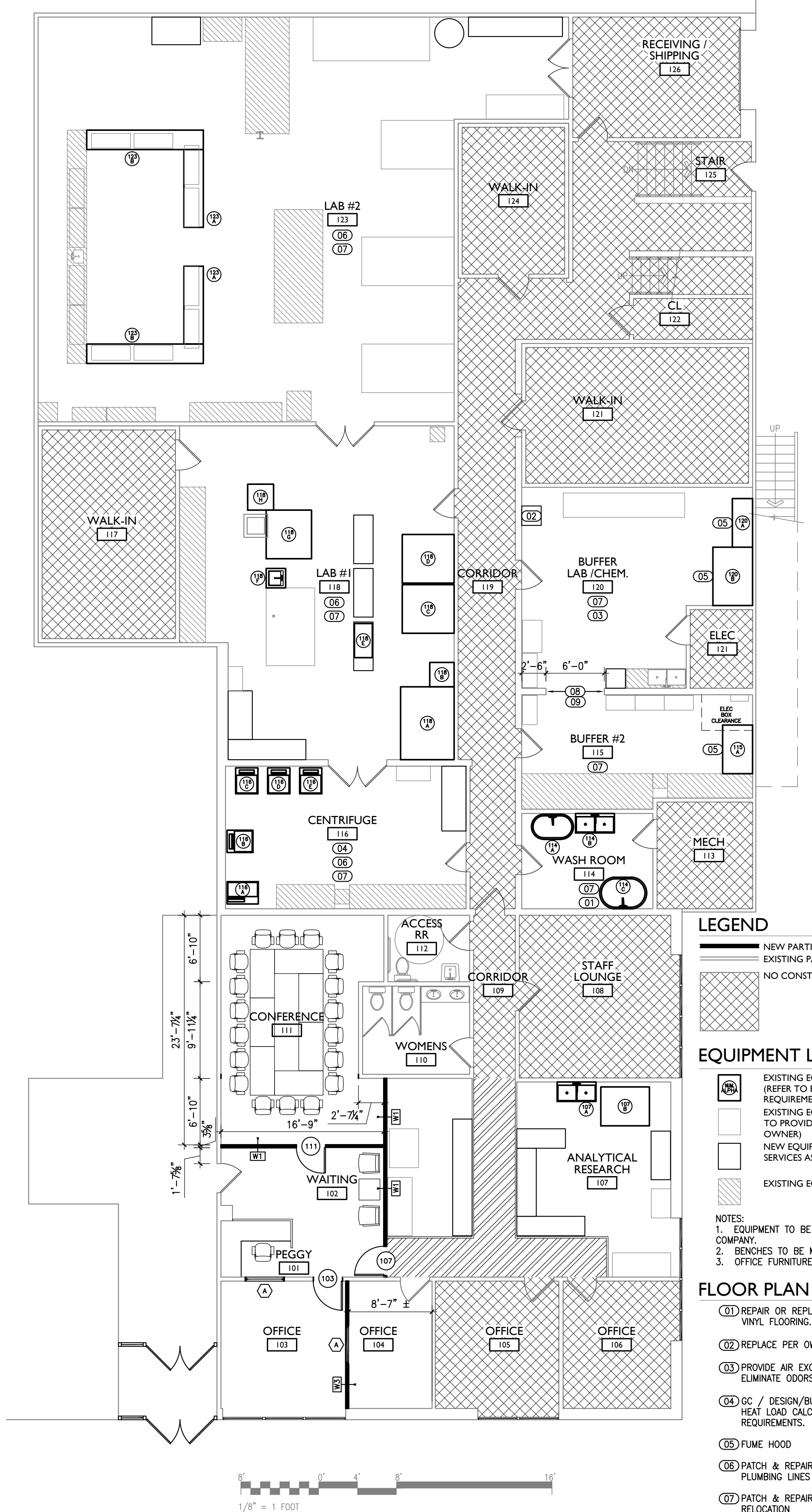
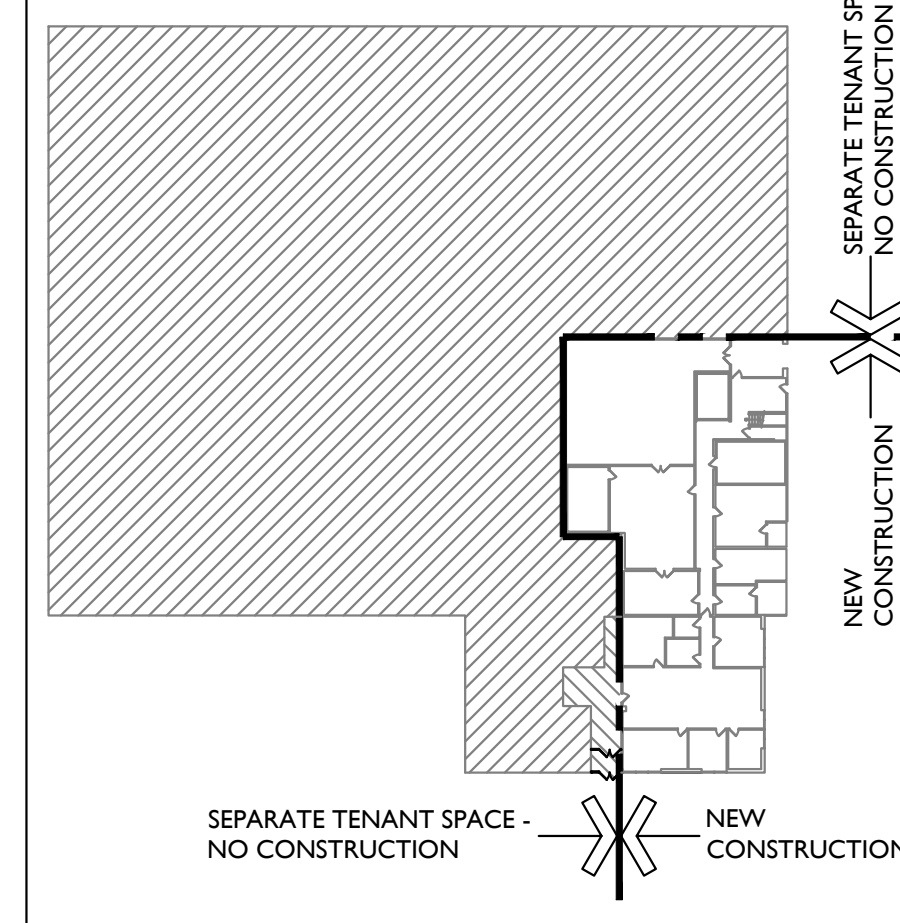
A101

© COPYRIGHT 1985-2013
 REPRODUCTION OR USE OF THIS DOCUMENT WITHOUT WRITTEN PERMISSION OF GAWRON TURGEON ARCHITECTS IS PROHIBITED



F18 PARTITION TYPES

1/2"=1'-0"



LEGEND

- NEW PARTITIONS
- EXISTING PARTITIONS
- NO CONSTRUCTION ANTICIPATED

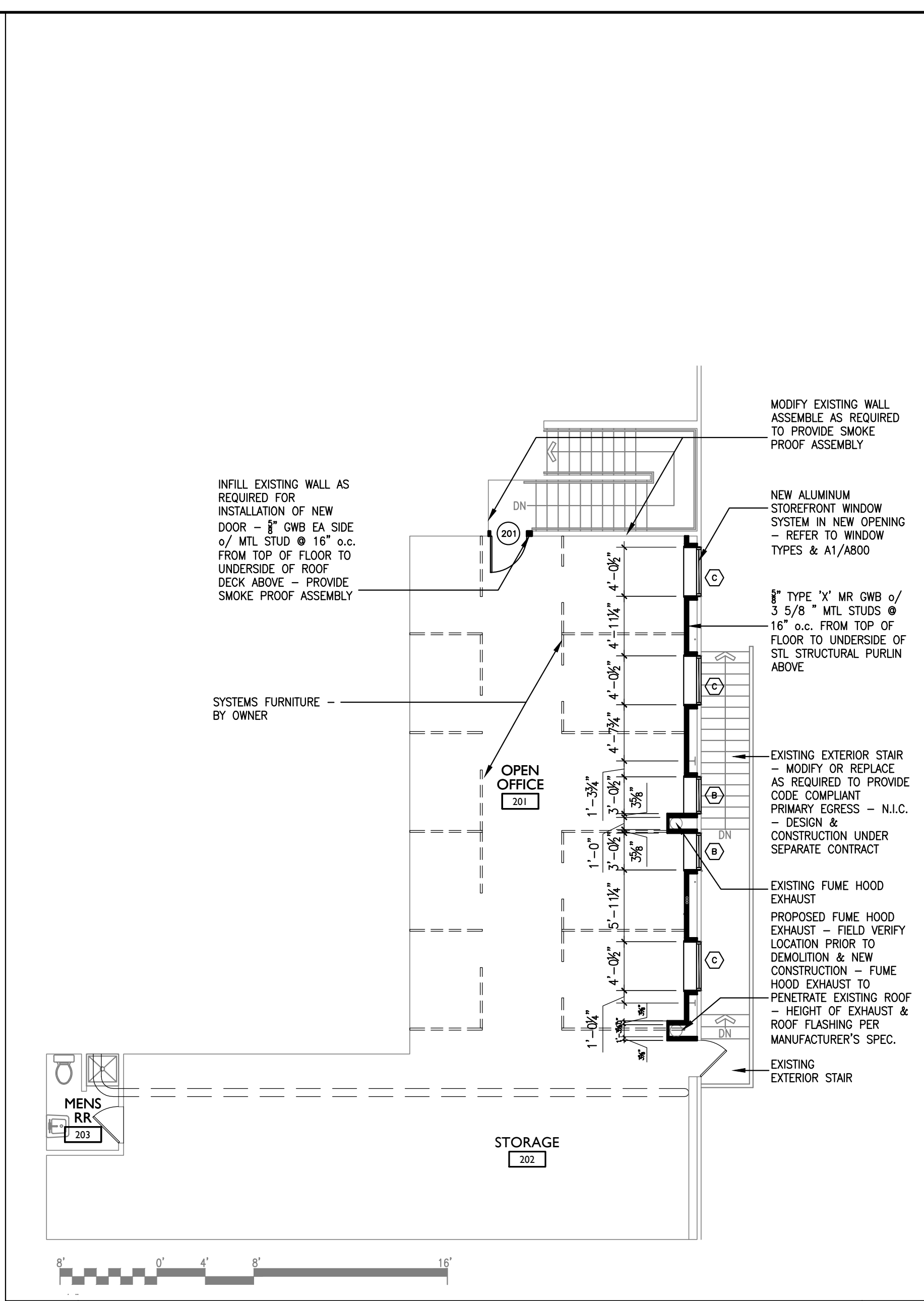
EQUIPMENT LEGEND

- EXISTING EQUIPMENT - RELOCATED (REFER TO EQUIPMENT LIST FOR SERVICE REQUIREMENTS)
- EXISTING EQUIPMENT - RELOCATED (GC TO PROVIDE SERVICES AS INDICATED BY OWNER)
- NEW EQUIPMENT (GC TO PROVIDE SERVICES AS INDICATED BY OWNER)
- EXISTING EQUIPMENT - NO CHANGE

- NOTES:
 1. EQUIPMENT TO BE MOVED BY OWNER MOVING COMPANY.
 2. BENCHES TO BE MOVED BY GC.
 3. OFFICE FURNITURE TO BE MOVED BY OWNER.

FLOOR PLAN LEGEND

- REPAIR OR REPLACE DAMAGED FLASH COVE VINYL FLOORING.
- REPLACE PER OWNER'S REQUIREMENTS.
- PROVIDE AIR EXCHANGE / EXHAUST TO ELIMINATE ODORS.
- GC / DESIGN/BUILD ENGINEER TO PERFORM HEAT LOAD CALCULATIONS & MEET ASHRAE REQUIREMENTS.
- FUME HOOD
- PATCH & REPAIR FLOOR DUE TO CAPPED PLUMBING LINES
- PATCH & REPAIR WALL DUE TO EQUIPMENT RELOCATION
- PATCH FLOOR AREA MATCH EXISTING
- NEW WALL OPENING - REFER TO A4/A800 & L11/A800



G4 MEZZANINE FLOOR PLAN

1/8"=1'-0"

ROOM & MARK	DESCRIPTION	STATUS	ELECTRICAL										REMARKS				
			F.A.	R.W.	H.P.	PHASE	DIRECT	PLUG	COLD	HOT	DI	INDIRECT		SIZE	W/STUB		
107-A	SINK - FIBERGLASS 2 BOWL	NEW															RIM @ 36" A.F.F. - WALL HUNG - PUMP WASTE SYSTEMS
107-B	HITCHHI	NEW															RIM @ 30" A.F.F. OF NEW SS PEDISTAL, CONNECT TANK DRAIN TO EXISTING DRAINAGE SYSTEM
114-A	RUBBERMAID TANK 100 GAL.	EXISTING															RIM @ 36" A.F.F. - WALL HUNG
114-B	SINK - FIBERGLASS 2 BOWL	NEW															RIM @ 30" A.F.F. OF NEW SS PEDISTAL, CONNECT TANK DRAIN TO EXISTING DRAINAGE SYSTEM
114-C	RUBBERMAID TANK 150 GAL.	NEW															RIM @ 36" A.F.F. - WALL HUNG
115-A	FUME HOOD	NEW															RIM @ 36" A.F.F. OF NEW SS PEDISTAL, CONNECT TANK DRAIN TO EXISTING DRAINAGE SYSTEM
116-A	ULTRA CENTRIFUGE	RELOCATED															REACH-IN w/ CLIP SINK
116-B	CENTRIFUGE	RELOCATED															
116-C	CENTRIFUGE	RELOCATED															
116-D	CENTRIFUGE	RELOCATED															
116-E	CENTRIFUGE	RELOCATED															
118-A	ANALYZER	RELOCATED															
118-B	ADVA COMPUTER	RELOCATED															
118-C	HITACHI 911	RELOCATED															
118-D	HITACHI 717	RELOCATED															
118-E	IMMAGE	RELOCATED															
118-F	SINK - FIBERGLASS 1 BOWL	NEW															RIM @ 36" A.F.F.
118-G	HITACHI 717	RELOCATED															
118-H	BERNIE'S FRIDGE	RELOCATED															
120-A	FUME HOOD	NEW															WALK-IN REACH-IN w/ CLIP SINK
120-B	FUME HOOD	NEW															PROVIDE NEW POWER & DRAIN LINE AS REQUIRED TO CONNECT TO EXISTING DRAIN LINE @ EXISTING SINK
123-A	BENCH	NEW															REWORK EXISTING POWER & DRAIN LINE AS REQUIRED TO CONNECT TO EXISTING DRAIN LINE @ EXISTING SINK
123-B	BENCH	RELOCATED															CONNECT EXISTING OUTLETS @ BENCH TO NEW CIRCUIT
123-C	BENCH POWER	RELOCATED															

F4 EQUIPMENT LIST

NA

A10 GROUND FLOOR PLAN

1/8"=1'-0"

A18 KEY PLAN

1/64"=1'-0"