

**FOUNDATION NOTES:**

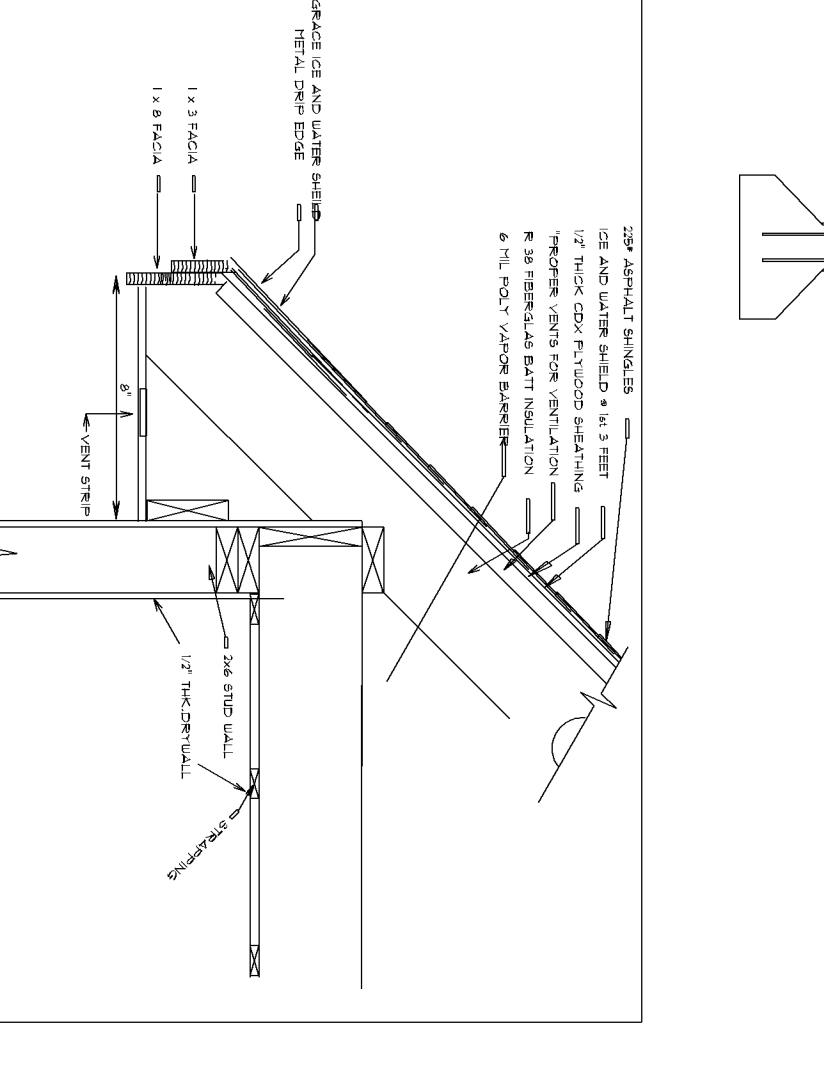
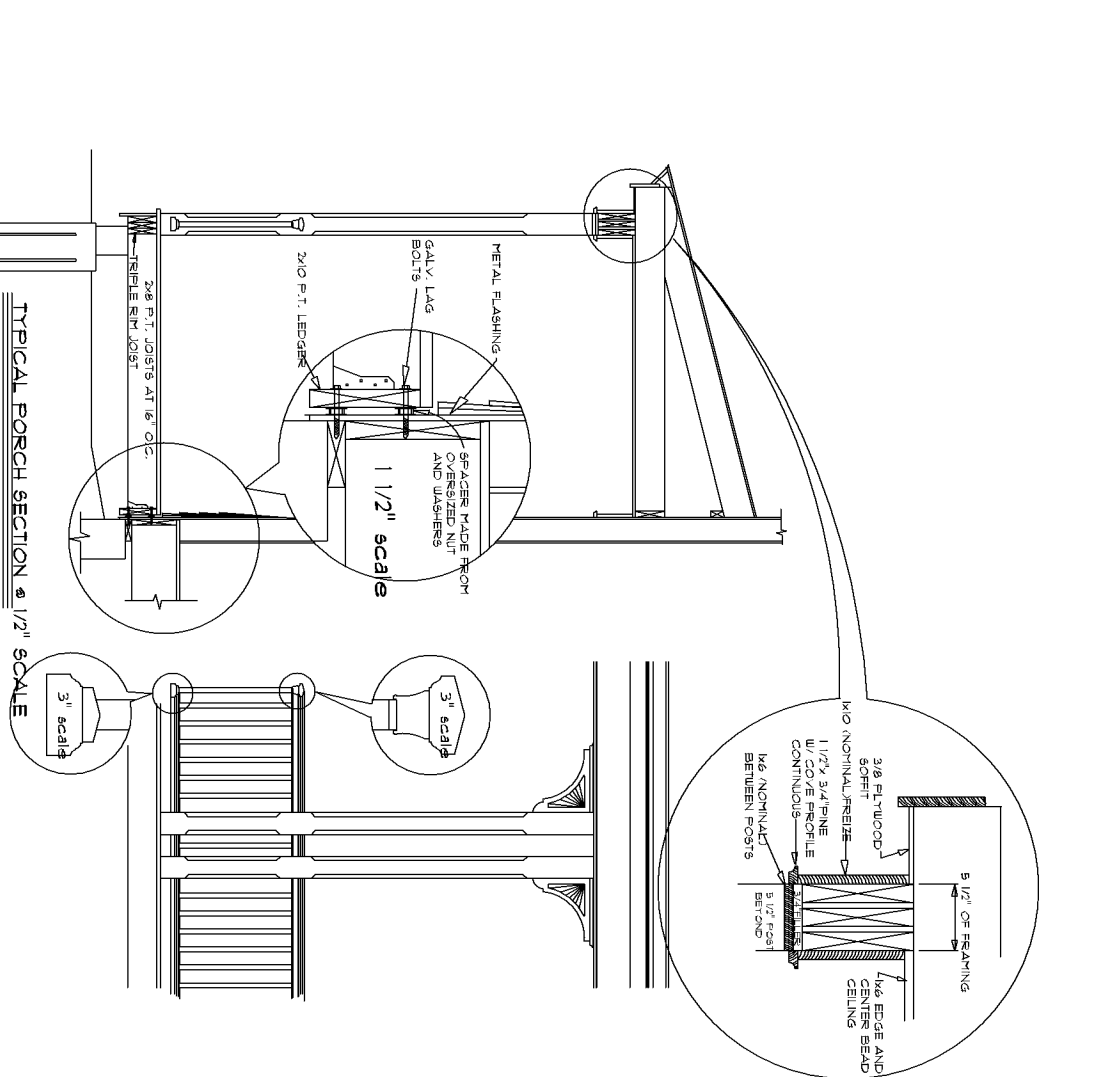
1. ALL FINISH WALL & FOOTING HEIGHTS SHALL BE DETERMINED IN THE FIELD WITH CONTRACTOR.
2. ALL FOUNDATION WALLS SHALL BE CHECKED & VERIFIED IN FIELD WITH CONTRACTOR. OTHERWISE, IF NOT BIDDING SHALL BE DETERMINED IN FIELD BY CONTRACTOR.
3. ALL FOUNDATION WALLS SHALL BE 12\"/>

**WALLS REFER TO SECTION 2205. NAILS FOR WALL SHEATHING ARE REMITTED TO BE COMMON BOX OR CASING NAILS SPACED AT 9 INCHES ON CENTER AT EXTERIOR EDGES AND 8 INCHES ON CENTER AT INTERMEDIATE SUPPORTS AND CORNERS ON 16\"/>**

SEE NOTE #	QUANTITY	DESCRIPTION	LOCATION	FASTENING CONNECTION
SEE NOTE F	96	PANEL STRIPS (TO FRAMING)		
SEE NOTE F	96	1/2\"/>		

SEE NOTE #	QUANTITY	DESCRIPTION	LOCATION	FASTENING CONNECTION
SEE NOTE C	36	TOE NAILING SINGLE FLOOR COMBINATION		
SEE NOTE D	2,387	12\"/>		

FASTENING SCHEDULE (SEE TABLE 2304.9.1 M.E.S. RESIDENTIAL CONSTRUCTION CODE FOR COMPLETE DETAILS)



FASTENING SCHEDULE (SEE TABLE 2304.9.1 M.E.S. RESIDENTIAL CONSTRUCTION CODE FOR COMPLETE DETAILS)