

# KNIGHT FARM SUBDIVISION

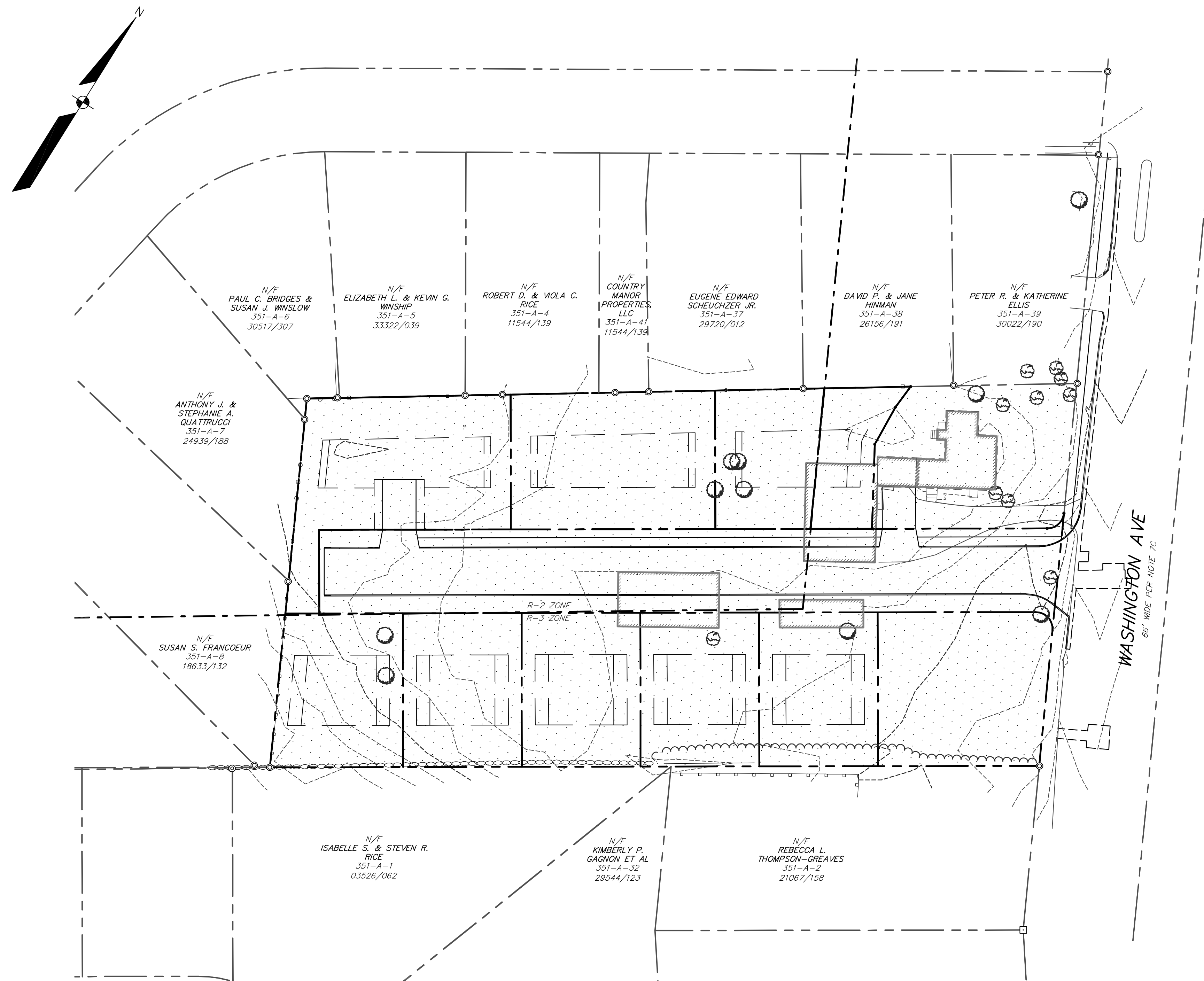
1728 WASHINGTON AVE  
PORTLAND, MAINE 04103

APPLICANT:  
GREENLIGHT  
ENTERPRISES, LLC  
1728 WASHINGTON AVE.  
PORTLAND, MAINE 04103

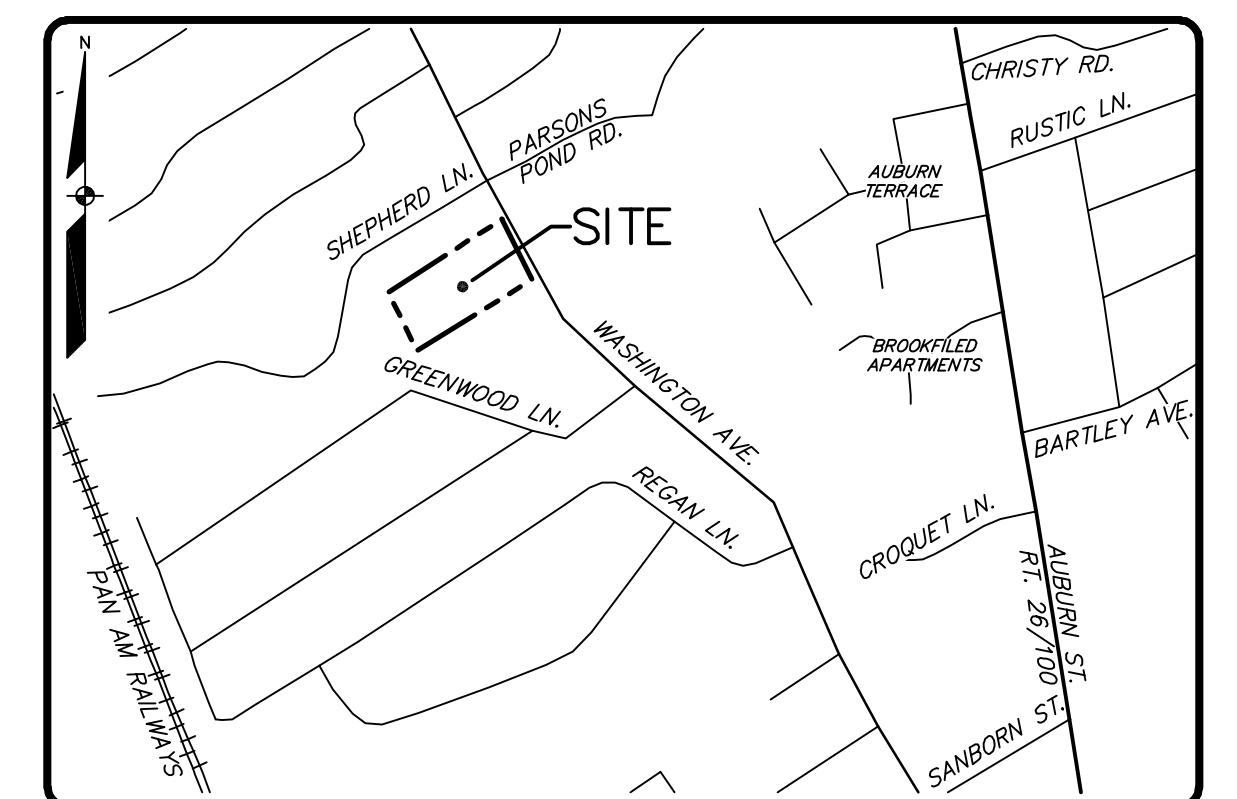
ENGINEER/SURVEYOR:

**SEBAGO**  
TECHNICS

WWW.SEBAGOTECHNICS.COM  
75 John Roberts Rd. Suite 1A South Portland, ME 04106 Tel. 207-200-2100  
250 Goddard Rd. Suite B Lewiston, ME 04240 Tel. 207-783-5656



SCALE: 1" = 40'



LOCATION MAP

NTS

## INDEX OF PLANS

SHEET NO.	SHEET TITLE
1	COVER SHEET
2	EXISTING CONDITIONS SURVEY
3	SUBDIVISION PLAN
4	GRADING AND UTILITY PLAN
5	PROFILE
6	DETAILS
7	DETAILS
8	DETAILS
1	PRE DEVELOPMENT WATERSHED PLAN
2	POST DEVELOPMENT WATERSHED PLAN