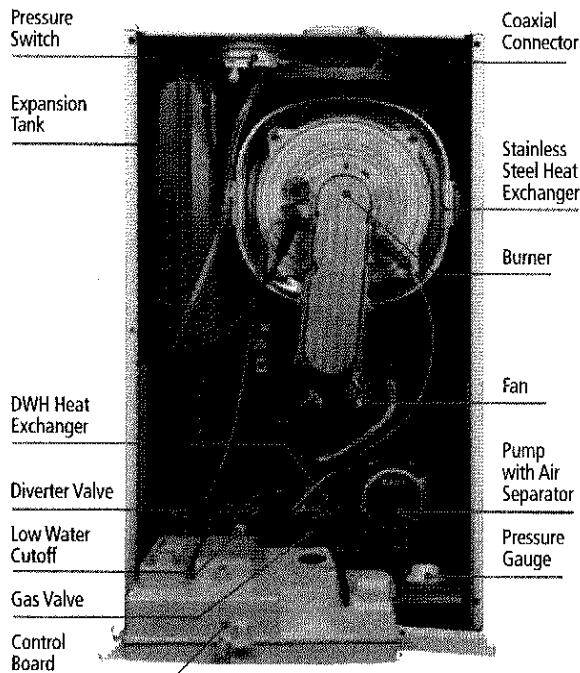


# Built-In Value Added



*Baxi Luna Duo-Tec is a high efficiency modulating, condensing wallhung boiler with multiple built-in safety and performance enhancing components.*

- ◆ 7:1 turndown ratio enhances versatility and optimal efficiency.
- ◆ Automatic gas-adaptive and self-calibrating functions enhance combustion efficiency and lower fuel bills.
- ◆ Two-speed modulating pump with built-in air vent generates up to 40% reduction in electrical use annually.
- ◆ Stainless steel ANSI 316L pre-mixed burner and heat exchanger (which comes with a 10-year warranty) assures longevity.
- ◆ Enhanced stainless steel secondary heat exchanger delivers domestic hot water.
- ◆ Controller with large backlit digital display on front of boiler makes it easy to set up and service.
- ◆ Pre-heat function helps eliminate cold water sandwich.
- ◆ Ability to accept preheated solar water.
- ◆ Frost protection, as well as pump and diverter valve seize prevention.
- ◆ Approved for closet installation, saving valuable living space.
- ◆ Ask a Baxi certified contractor about other built-in performance and safety features including high limit sensors, low water cut-off, shut off valves, pressure relief valve, system pressure gauge, expansion tank and auto bypass.

Baxi Luna High Efficiency Technical Notes			Baxi Luna Duo-Tec Residential Models		Baxi Luna Commercial Models		
			40 GA	133 GA	HT 1.45	HT 1.65	HT 1.100
Rated heat input	BTU/hr	125,908	125,908	167,262	241,600	379,127	
Reduced heat input	BTU/hr	21,838	21,838	55,681	73,361	112,980	
Rated heat output	BTU/hr	112,601	112,601	153,456	221,789	348,039	
Reduced heat output	BTU/hr	19,108	19,108	52,058	69,326	106,766	
Rated Domestic input	BTU/hr	153,864	n/a	n/a	n/a	n/a	
Reduced Domestic input	BTU/hr	21,838	n/a	n/a	n/a	n/a	
Rated Domestic output	BTU/hr	136,486	n/a	n/a	n/a	n/a	
Reduced Domestic output	BTU/hr	19,108	n/a	n/a	n/a	n/a	
Sealed combustion chamber		Yes	Yes	Yes	Yes	Yes	
Ignition		Electronic	Electronic	Electronic	Electronic	Electronic	
Freeze Protection Safety Device		Yes	Yes	Yes	Yes	Yes	
Maximum pressure on heating circuit	psi	30	30	30	30	30	
Regulation of heating circuit water temperature	~ high temp °F/°C	176/80	176/80	176/80	176/80	176/80	
	~ low temp °F/°C	77/25	77/25	77/25	77/25	77/25	
Dimensions	Height	in	30	30	37 13/32	37 13/32	37 13/32
	Width	in	17 23/32	17 23/32	23 1/8	23 1/8	23 1/8
	Depth	in	13 13/32	13 13/32	18 23/64	18 23/64	25 1/8
Coaxial Vent Diameter	in	2 1/8 - 3 13/16	2 1/8 - 3 13/16	3 1/32 - 4 15/16	3 1/32 - 4 15/16	4 11/32 - 6 5/8	
	mm	60-100	60-100	80-125	80-125	110-160	
Dual Flue Vent Diameter	in   mm	3 7/32   80	3 7/32   80	3 5/32   80	3 5/32   80	4 11/32   110	
Net weight	lbs	102	102	141	158	215	
Gas type		NG/LPG	NG/LPG	NG/LPG	NG/LPG	NG/LPG	



Marathon International  
Exclusive North American Distributor for Baxi Products  
1815 Sismet Road, Mississauga  
Ontario L4W 1P9, Canada  
info@wallhungboilers.com

Baxi is ISO 9001 certified for quality management, OHSAS 18001 for health and safety management and ISO 14001 for environmental management.

The Company assumes no responsibility for any possible contents mistakes, and reserves the right to make changes in products, due to technical or commercial demands, at any time without notice.



[www.wallhungboilers.com](http://www.wallhungboilers.com)