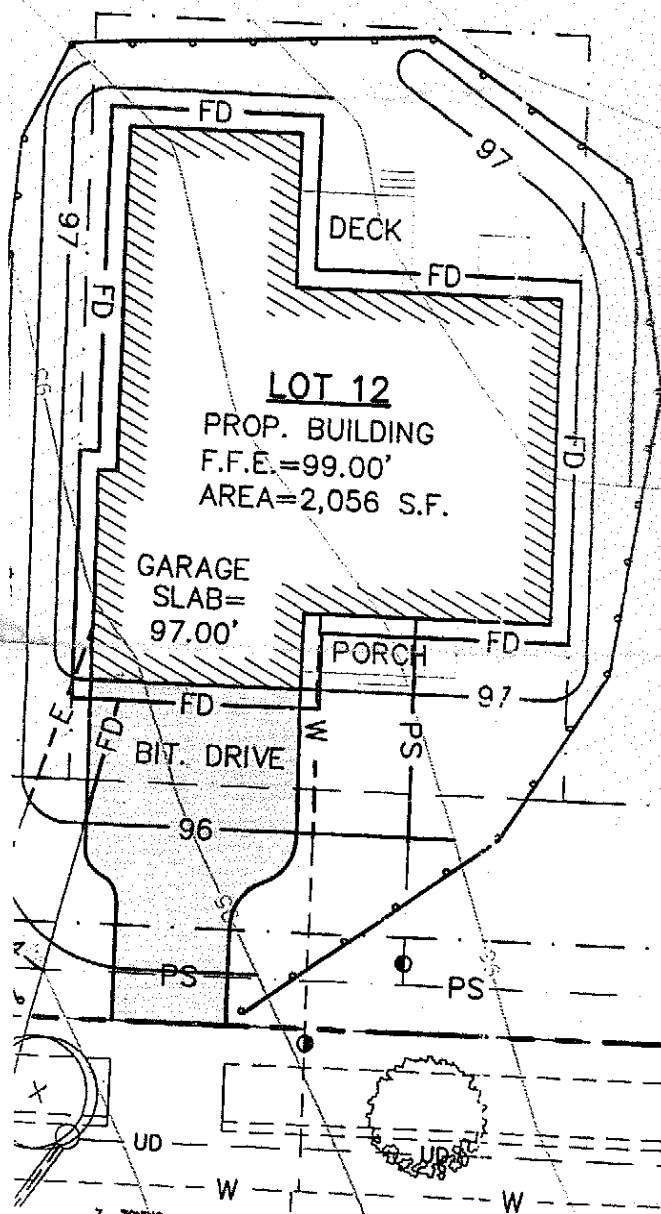


lona Hashey

LOT 9

LOT 8

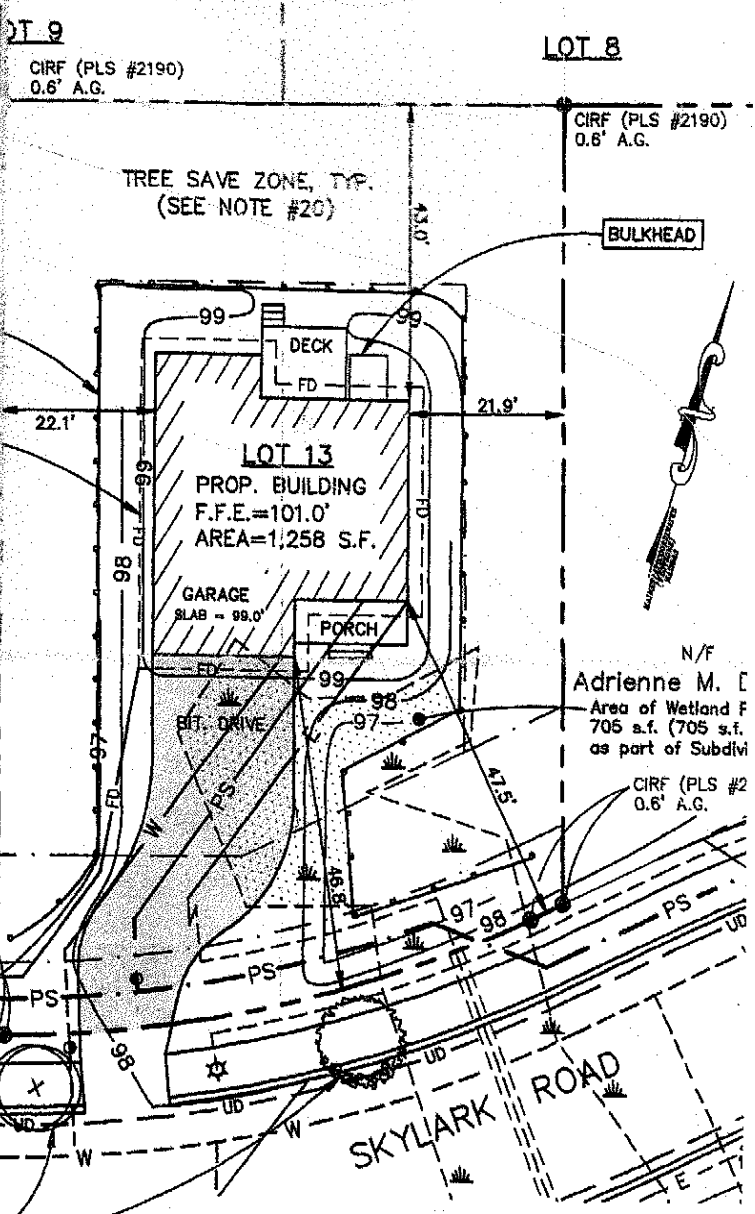
TREE SAVE ZONE, TYP.



LOT 12
 PROP. BUILDING
 F.F.E.=99.00'
 AREA=2,056 S.F.

GARAGE
 SLAB=
 97.00'

PORCH
 BIT. DRIVE



TREE SAVE ZONE, TYP.
 (SEE NOTE #20)

LOT 13
 PROP. BUILDING
 F.F.E.=101.0'
 AREA=1,258 S.F.

GARAGE
 SLAB = 99.0'

PORCH

N/F
 Adrienne M. []
 Area of Wetland F
 705 s.f. (705 s.f.)
 as part of Subdvi

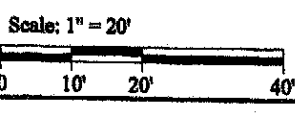
CIRF (PLS #2)
 0.6' A.G.

SKYLARK ROAD

7. ZONING: R-3 RESIDENTIAL ZONE
8. PROJECT AREA: 10,400 S.F.
9. PROPOSED USE: 1 SINGLE FAMILY HOUSE LOT
10. MINIMUM STANDARDS: LOT SIZE - 6,500 S.F.
FRONTAGE - 50'
SETBACKS - 25' FRONT AND REAR
14' SIDE (2-STORY)
11. SEWER SERVICE: PUBLIC
12. WATER SERVICE: PUBLIC
13. ELECTRIC/TELEPHONE: UNDERGROUND
14. ALL CONSTRUCTION AND SITE ALTERATIONS SHALL BE DONE IN ACCORDANCE WITH THE EROSION PREVENTION PROVISIONS OUTLINED IN THE MAINE EROSION CONTROL AND SEDIMENTATION CONTROL, BMP'S, LATEST REVISION.
15. PLAN REFERENCES:

- B. THE HOMESTEADS FOR SUBURBAN LAND TRUST JORDAN & COMPANY, COUNTY REGISTRY OF
- C. PLAN OF HANSON MAI HANSON DATED MARCH RECORDED IN THE CUA PLAN BOOK 57, PAGE
- D. STANDARD BOUNDARY MAINE FOR DIVERSIFIED TITCOMB ASSOCIATES
- E. AMENDED MASTER PLAN CONDOMINIUMS ALLEN DEVELOPMENT CORP. D AND RECORDED IN THE DEEDS PLAN BOOK 20
- F. PLAN OF RIGHT OF WAY DISTRICT PORTLAND, 14 PORTLAND WATER DIST.
- G. NORTHWOOD CONDOMINIUMS PORTLAND, MAINE FUTURE LAND PHASES FOR RISSARA CONSTRUCTION CO., INC. DATED 5/2/83 AND RECORDED IN THE CUMBERLAND COUNTY REGISTRY OF DEEDS PLAN BOOK 139, PAGE 81.

SYMBOL	DESCRIPTION
--- (dashed line)	LIMITS OF WETLANDS
--- (dotted line)	NOW OR FORMERLY
--- (dash-dot line)	ARCHE GROUND
--- (long-dashed line)	DRAINAGE SETBACKS
--- (short-dashed line)	WATER SERVICE
--- (dash-dot-dot line)	SANITARY SEWER
--- (long-dash-short-dash line)	STORM DRAIN
--- (short-dash-dot-dot line)	FIRELINE OTHER
--- (dash-dot-dot-dot line)	SILT FENCE
--- (dotted line with circles)	EXISTING CONTOUR
--- (dotted line with squares)	PROPOSED CONTOUR
--- (dotted line with triangles)	UTILITY POLE
--- (dotted line with diamonds)	SANITARY SEWER MANHOLE
--- (dotted line with stars)	CATCH BASIN
--- (dotted line with crosses)	CAPPED IRON ROD FOUND



16. PORTLAND HIGHLANDS PORTLAND CUMBERLAND COUNTY, MAINE OWNED BY H.R. LONE LAND CO. INC., DATED JULY 27, 1924 BY ERNEST W. BRANCH CIVIL ENGINEER AND RECORDED IN THE CUMBERLAND COUNTY REGISTRY OF DEEDS PLAN BOOK 16, PAGE 10.

17. LAND DISTURBANCE: 5,800 S.F.