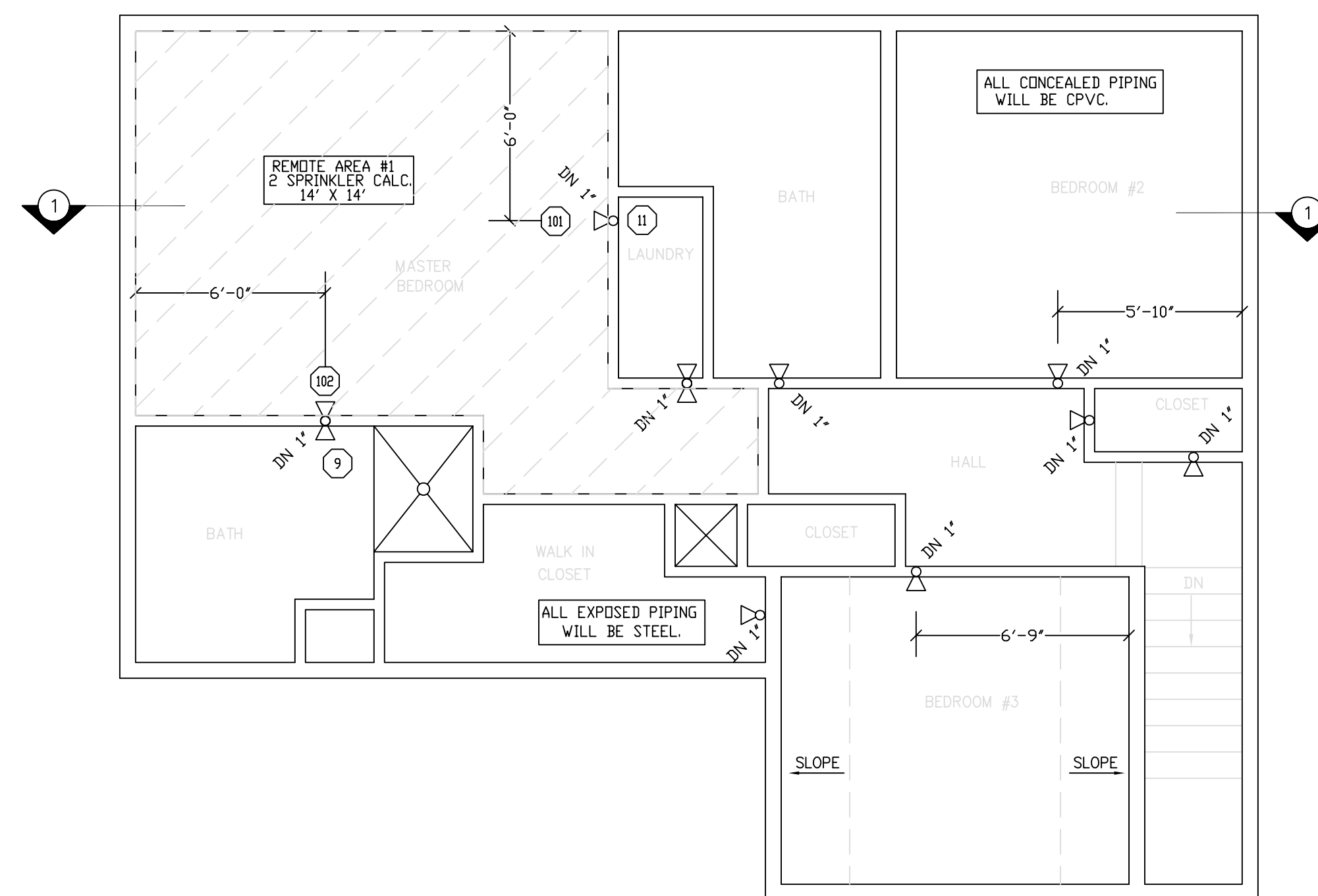


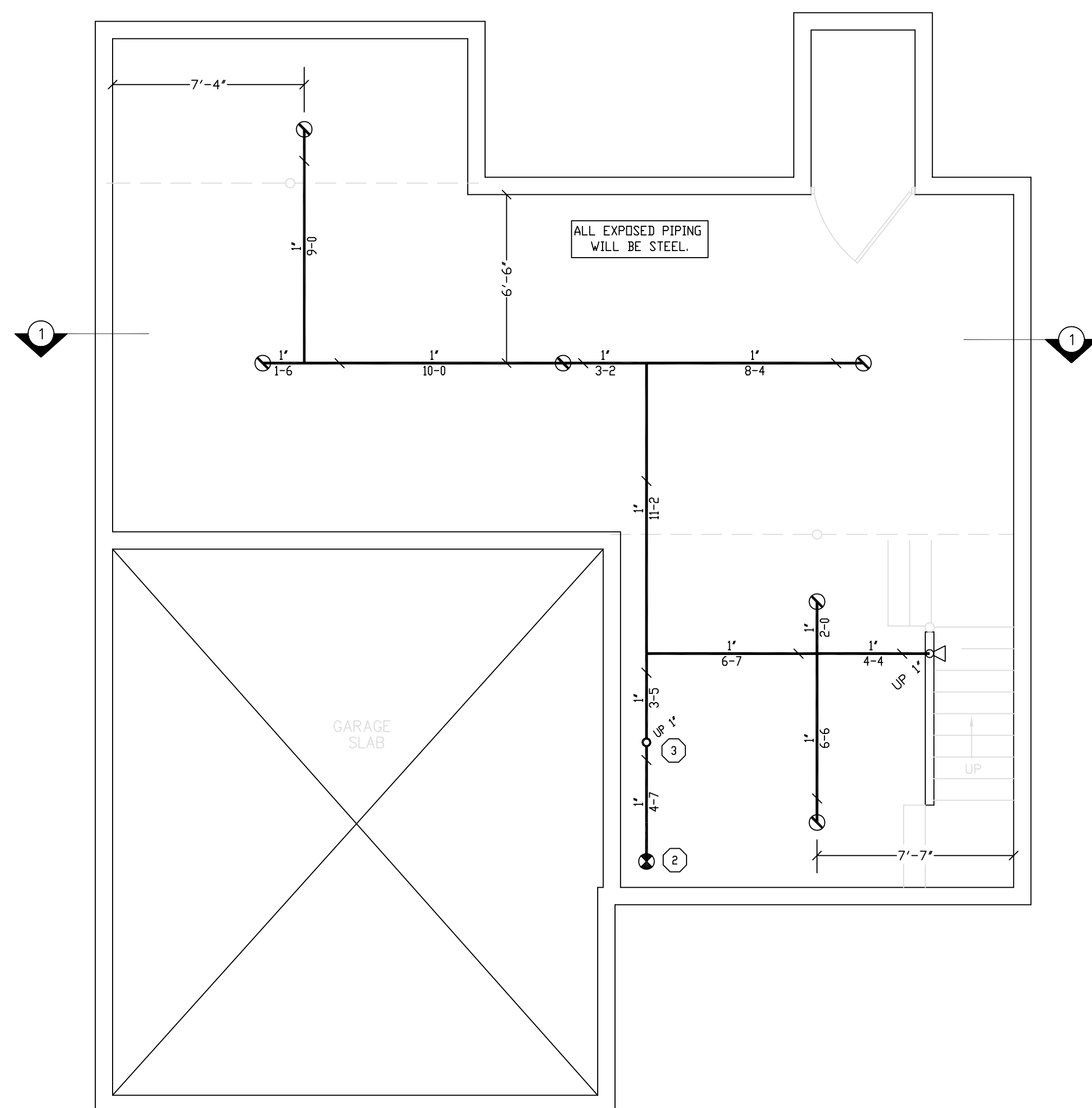
NOTE ON PLAN: "A" DIMENSION  
 PIPE SIZES 1" THROUGH 4" - ROD SIZE 3/8"  
 PIPE SIZES 5" THROUGH 8" - ROD SIZE 1/2"  
**TYPE #10 HANGER**



**SECOND FLOOR FIRE PROTECTION**

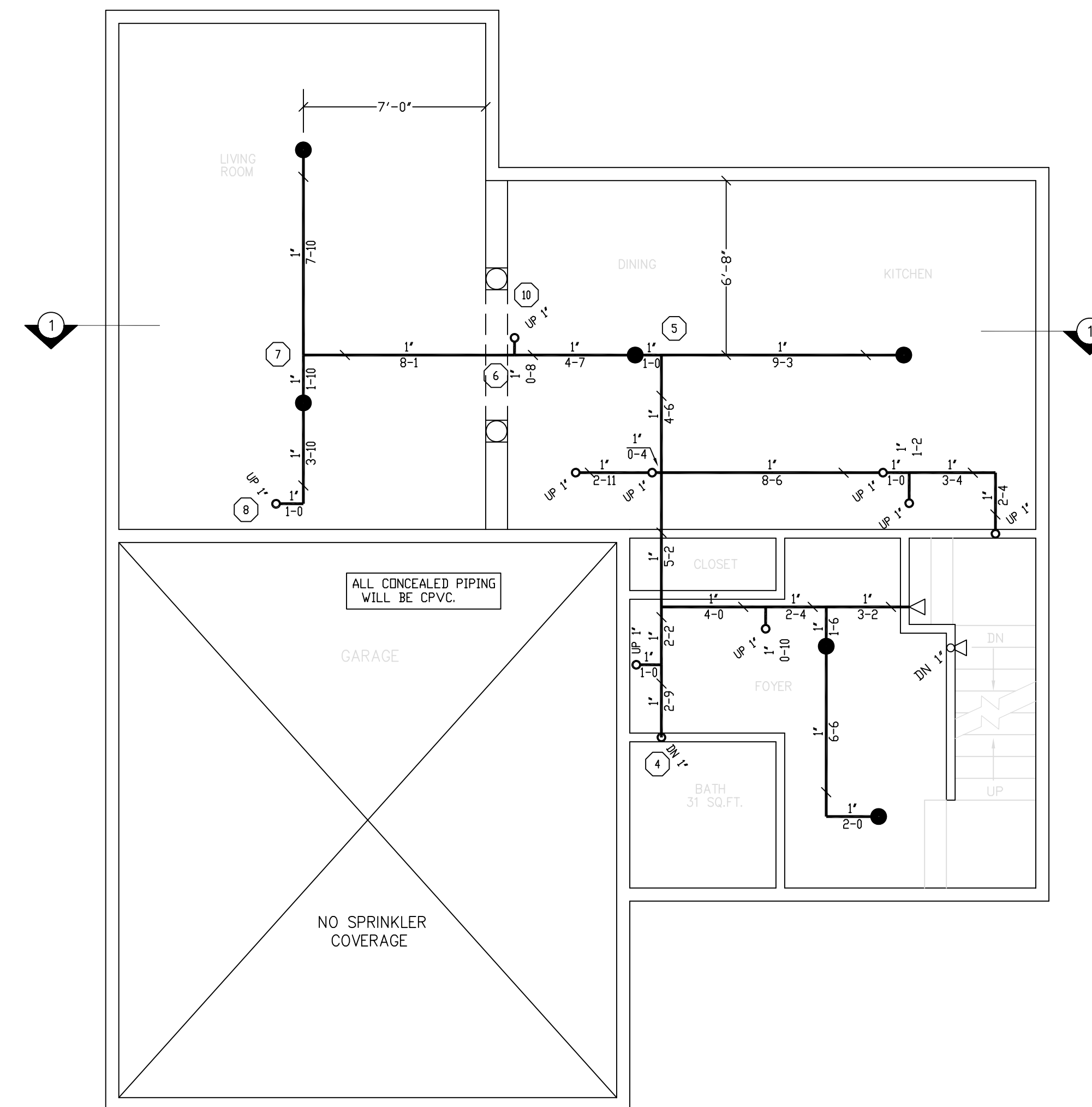
SCALE 1/4"=1'-0" QUANTITY  $\odot$  = 11

HYDRAULIC DESIGN DATA	
System # & Area	#1 - #1
No. of Sprinklers	2
Density	0.05 GPM
Designed Area	2 SPRINK.
Hose Allowance	N/A GPM
Water Flow Rate	53 GPM
Residual Pressure at Base of Riser	68 PSI
Safety Factor at Base of Riser	5.71 PSI



**BASEMENT FIRE PROTECTION**

SCALE 1/4"=1'-0" QUANTITY  $\odot$  = 6  
 QUANTITY  $\odot$  = 1



**GROUND FLOOR FIRE PROTECTION**

SCALE 1/4"=1'-0" QUANTITY  $\odot$  = 6  
 QUANTITY  $\odot$  = 2

REVISIONS	NOTES	SPRINKLER TYPE	IDENTIFICATION NO.	MFG.	ESC.	MODEL	FINISH	ORIFICE	TEMP.	SYMBOL	QUANT.
	K=4.9 PENDANT SPRINKLER COVERAGE: 16'X36'	QUICK RESP. PENDANT K=4.9	TY2234	TYCO	N/A	LFII	BRASS	1/2"	155°	$\odot$	6
	K=4.4 SIDEWALL SPRINKLER COVERAGE: 14'X14'	QUICK RESP. PENDANT K=4.9	TY2234	TYCO	CONCEALED	LFII	WHITE	1/2"	155°	$\odot$	6
		QUICK RESP. SIDEWALL K=4.4	TY2334	TYCO	2 PIECE	LFII	WHITE	1/2"	155°	$\odot$	14
TOTAL SPRINKLERS THIS DRAWING											26

STANDARD SYMBOLS	
$\odot$	POST INDICATOR VALVE
$\ominus$	KEY VALVE
$\oplus$	FIRE HYDRANT
$\odot$	FIRE DEPT. CONNECTION
$\odot$	O.S. & Y GATE VALVE
$\odot$	SWING CHECK VALVE
$\odot$	NEW UNDERGROUND
$\odot$	EXIST UNDERGROUND

STANDARD SYMBOLS	
$\odot$	ALARM CHECK VALVE
$\odot$	RISER W/ALARM VALVE
$\odot$	RISER W/DRY VALVE
$\odot$	RISER W/ELEC. FLOW SWITCH
$\odot$	RISER W/DELUGE VALVE
$\odot$	WATER MOTOR BELL
$\odot$	ELECTRIC BELL
$\odot$	FLUSH FIRE DEPT. CONNECTION

INSPECTIONS	
1.	
2.	
3.	
4.	
5.	

SKYLARK COMMONS LOT #13  
 89 SKYLARK ROAD  
 PORTLAND, MAINE 04103

**FIRE PROTECTION PLAN**

FREEDOM FIRE PROTECTION, INC.  
 209 QUAKER RIDGE ROAD  
 CASCO, MAINE 04015

JOB No. M0149  
 DATE 11/26/13  
 DRAWN BY M/JN  
 SCALE AS NOTED  
 SHEET No. FP-2 of 2