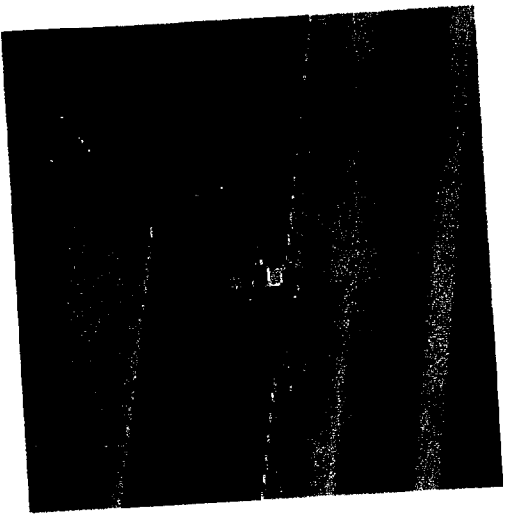


IN THE INDUSTRY



Concrete Receptor Coping

Throughout the pool industry, Imperial is known for its meticulous workmanship and attention to every detail. Following years of extensive testing and exhaustive research, we've determined that the best way to lock the cement deck of a pool to its steel wall is with our innovative exclusive concrete receptor coping.

Concrete Receptor Coping -
Minimum Safety Grip

Steel Panel -
Limited Lifetime Warranty with
7" Triple Bend Flanges

Imperial
**LIFETIME
WARRANTY**

Full Flange Stiffener -
Triple Bent for Strength:
2 per 8' panel

Deck Support -
Supports Load of Concrete Deck
(optional)

A-Frame Brace - with Adjustable
2"x2"x1/8" Thick Top Member

Tread-Loc Step -
With Patented Support System

Underground Plumbing

Concrete Bonding Beam

Worldwide Excellence

Of course, it's not just our materials that are solid performers. The people at Imperial are equally committed to excellence. Our fine craftsmanship to each and every pool they design and make. Our quality control to ensure every pool is built to last. And our careful attention to detail and exceptional dealer support have made us the "People Company." Maybe that's why our pools are installed worldwide, from France to New Caledonia to Portugal.



OVER 40 YEARS OF CRAFTSMANSHIP HAVE MADE US A LEADER

STEEL

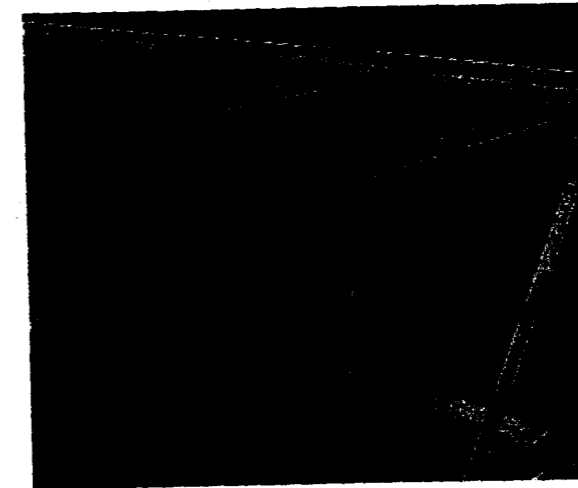


A-Frame Superiority

For more than 40 years, we've been designing and fabricating pools with a heavy-duty steel wall construction. Why steel? Because, just like bridges, high-rises and interstate guardrails, inground pools demand solid support. Our A-frames, with their 2" x 2" x 1/8" angle STEEL, are the strongest braces in the industry.

Benefits:

- 2" x 2" x 1/8" THICK ANGLE STEEL
- heavy-duty leveling plate with pre-drilled holes to ensure locked-in
- 1/2" diameter bolts are spaced 3/8" apart, allowing custom columns wall attachment



For Strength and Durability.

Imperial's *Legacy Pool* only uses quality made zinc coated galvanized steel. Ultra strong with 200% more zinc per square foot than commercial grades. Base steel is protected indefinitely from the elements by a 2.35 oz. coating of zinc. This galvanic action combats corrosion by providing a barrier between the elements and the base steel.

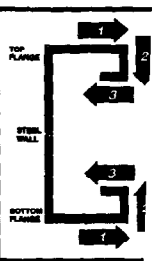
Benefits:

- super strong walls capable of holding tons of water
- durable and flexible to resist even extreme ground shifting



Triple Bend design for maximum Strength.

The top and bottom flanges of our steel panels measures 7" in total for the utmost in strength. Couple that with a unique bolt inter-loc system at the side flange. And for extra support, the full flange dual stiffeners are also of triple bend construction.



Benefits:

- the more flange angles, the more the strength
- 3 1/2% more strength than double bend panels
- steel wall strength increases in direct proportion to the width of its flanges. The *Legacy Pool* flanges are a full 7" on the top and bottom.

2' Radius Rectangle 16 ft. x 36 ft. with 8 ft. Stepi'n'Rest

