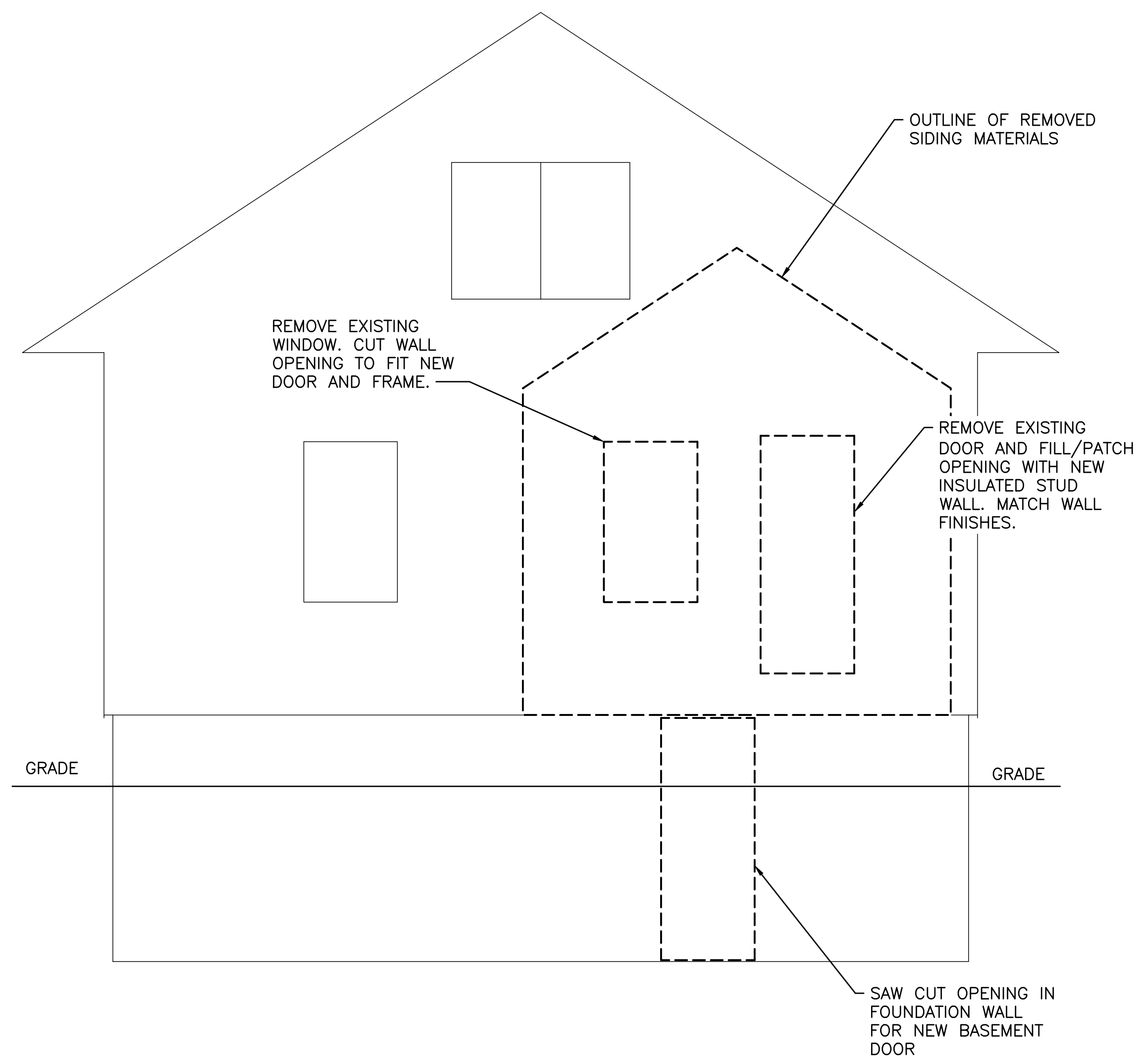
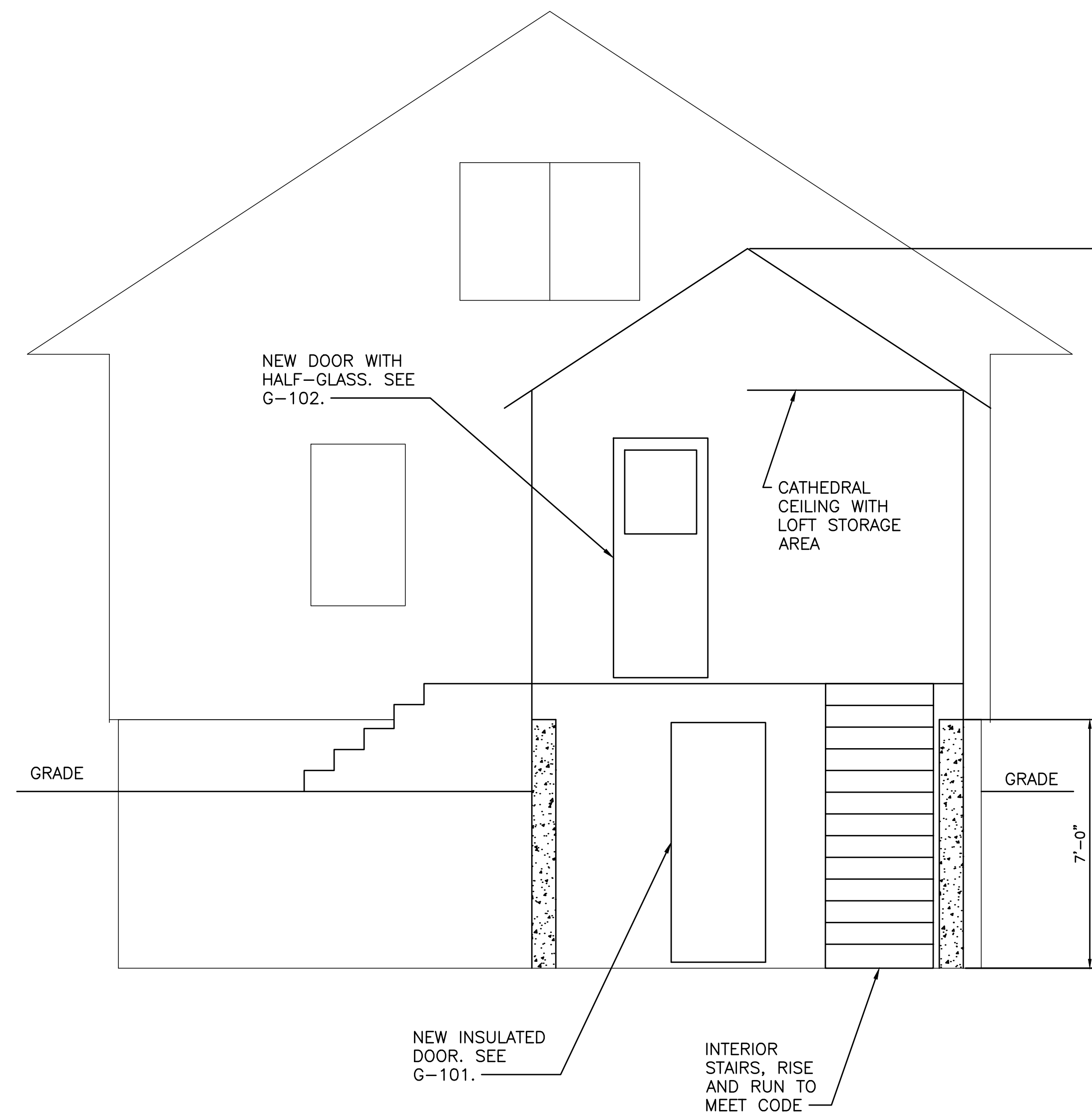


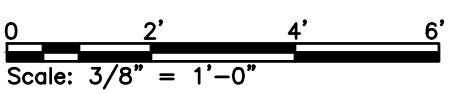
- NOTES:**
1. ALL WORK SHALL CONFORM TO THE 2009 INTERNATIONAL RESIDENTIAL CODE, MAINE STATE PLUMBING CODE, NATIONAL ELECTRICAL CODE, AND ALL LOCAL AND STATE STANDARDS.
  2. PROVIDE FLASHING AND SEAL ALL JOINTS WEATHERTIGHT.



**ADDITION SECTION — DEMOLITION**  
SCALE: 3/8" = 1'-0"



**ADDITION SECTION — NEW**  
SCALE: 3/8" = 1'-0"



		21 FISHER STREET PORTLAND, MAINE	
		16'x12' ADDITION	
0	ISSUED FOR CONSTRUCTION	08/14/17	NORTH ELEVATIONS - DEMO AND NEW
REV	DESCRIPTION	DATE	
	SIZE: ANSI D		DRAWING NO.
	DATE: 06/15/17		<b>G-201</b>
	DES BY:	SHEET	
	DWN BY:	4 OF 4	
	CKD BY:		