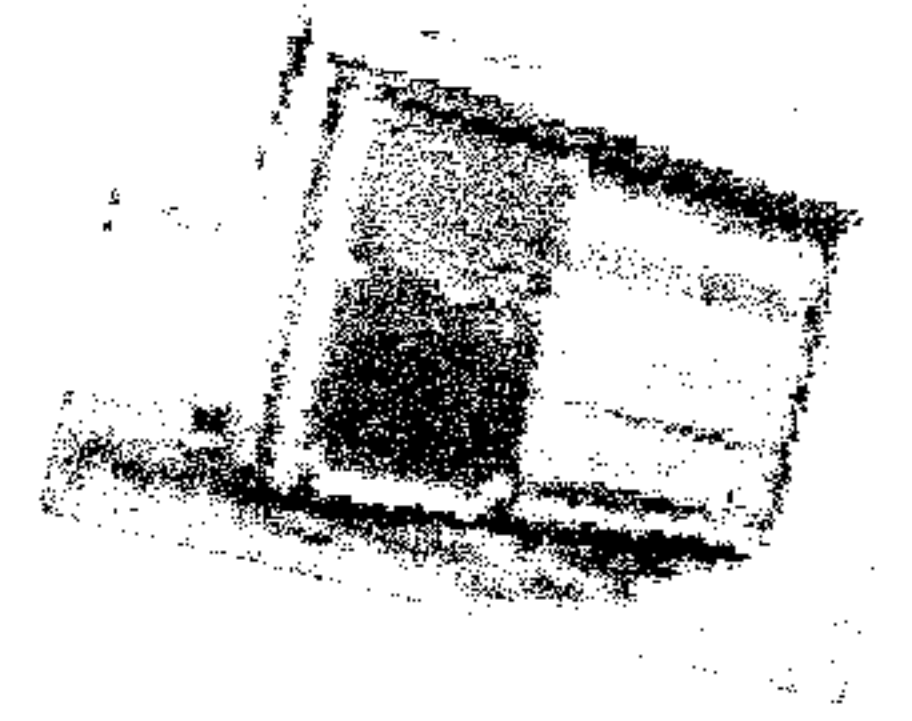


Barclay Custom Sheds



685 Washington Street Auburn, Maine 04210

2013 Pricing

Standard

Shed
10000

2x6 floor joists 8' units

2x8 floor joists 10' units

2x8 floor joists 12' units

Mid Wall Belly Boards

Anti-Swing Door Latches

Padlock Hasps

4 ft double door

1880
2105
*2610
2215
2500
3000
2800

size	5/8" T-111	Pine Siding	Vinyl Siding
8x8	\$1,299.00	\$1,399.00	\$1,850.00
8x10	\$1,499.00	\$1,570.00	\$2,199.00
8x12	\$1,720.00	\$1,780.00	\$2,520.00
8x16	\$2,198.00	\$2,300.00	\$3,300.00
10x10	\$1,899.00	\$2,050.00	\$2,770.00
10x12	\$2,169.00	\$2,599.00	\$3,299.00
10x16	\$2,569.00	\$2,880.00	\$4,350.00
12x12	\$2,699.00	\$3,000.00	\$4,130.00
12x14	\$3,039.00	\$3,240.00	\$4,440.00
12x16	\$3,459.00	\$3,670.00	\$5,120.00

Styles

Woodsheds

Bus Stops

Dog Houses

Motor Cycle Ports

Pump Houses

Ice Shacks

Hunting Cabins

Finish Options

4' Double door
Included

5' Door Upgrade \$85

Additional 4' Door
\$100

Additional Single
door \$95

Size	Stain	Trim
8x8	\$ 130.00	\$ 40.00
8x10	\$ 140.00	\$ 50.00
8x12	\$ 160.00	\$ 50.00
8x16	\$ 180.00	\$ 60.00
10x10	\$ 160.00	\$ 50.00
10x12	\$ 180.00	\$ 60.00
10x16	\$ 200.00	\$ 70.00
12x12	\$ 180.00	\$ 60.00
12x16	\$ 200.00	\$ 70.00

First 10 Miles **FREE**
from point of sale

\$3.00 per mile after 10

45 minute install
included

\$75 per hour after
billed in 10-minute
increments

Pressure Treated
Ramps

4' x 5' \$90.00

5' x 5' \$110.00

10' units \$60.00 12' units \$120.00

Oversized Delivery

"Lite" Unit 23" x
30" \$65

23" X 24" Vinyl
Slider/Screen \$140.00

24"x36" Single Hung
start at \$185

Additional Options

Siding ~ Roofing ~ Door Placement ~ Windows ~ Doors ~ Paint & Stain ~ Pressure Treated floors or Ramps

685 Washington Auburn, Maine 04210 shop 207-784-7300 cel 207-754-9452