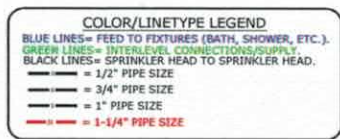
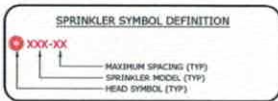


Markup Legend	
Delete Line	
Add Line	
Add Tee	
Add Elbow	
Add Coupling	
Add Head	
Delete Head	
Move Head	



**uponor**

**DESIGN SERVICES**  
 111 W. WASHINGTON ST., SUITE 100  
 PORTLAND, ME 04103  
 TEL: 207.625.7272 FAX: 207.625.7271  
 WWW.UPONOR.COM

**DISCLAIMER**  
 THE DESIGNER HAS CONDUCTED VISUAL GENERAL VERIFICATION OF THE INFORMATION PROVIDED TO HIM BY THE CONTRACTOR AND HAS FOUND NO APPARENT ERRORS OR OMISSIONS. THE CONTRACTOR IS RESPONSIBLE FOR THE ACCURACY AND COMPLETENESS OF THE INFORMATION PROVIDED TO HIM BY THE CONTRACTOR. THE CONTRACTOR IS RESPONSIBLE FOR THE ACCURACY AND COMPLETENESS OF THE INFORMATION PROVIDED TO HIM BY THE CONTRACTOR. THE CONTRACTOR IS RESPONSIBLE FOR THE ACCURACY AND COMPLETENESS OF THE INFORMATION PROVIDED TO HIM BY THE CONTRACTOR. THE CONTRACTOR IS RESPONSIBLE FOR THE ACCURACY AND COMPLETENESS OF THE INFORMATION PROVIDED TO HIM BY THE CONTRACTOR.

I hereby certify that this plan, specification, or report was prepared by me or under my direct supervision and that I am a NICET Certified at Level IV.

Brent D. Kotula  
 Date: \_\_\_\_\_ Reg. No. 118899

NO.	DATE	REVISIONS	DESCRIPTION

27 CYPRESS ST  
 PORTLAND, ME 04103

**SHEET DESCRIPTION**  
 BASEMENT

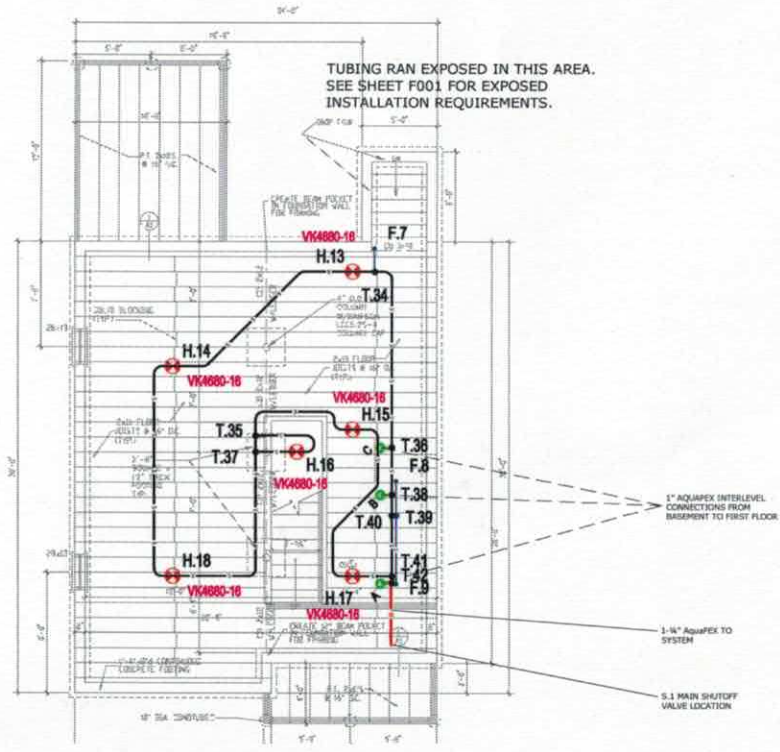
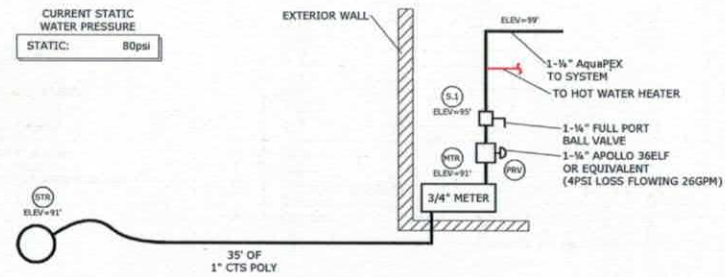
**SHEET NUMBER**  
**F100**

**Multipurpose Fire Safety Systems**  
 The Uponor Residential Fire Safety System is a residential fire protection system installed in combination with the cold side of the domestic potable water system. Only licensed contractors trained by Uponor can install this system.

**What to do if Changes are Required**  
 If any features or obstructions require the addition or deletion of sprinkler heads, or significant relocation of sprinkler heads, contact the Uponor Design Department to determine if observed changes require a redesign (888.594.7724).

MOST HYDRAULICALLY REMOTE HEADS			
HEAD #	GPM	PRESSURE REQ'D AT STREET	
1 HEAD H.1	17	51.69	
2 HEAD H.14 & H.18	25.9347	60.06	

- ① RC-RES-14-175 SENJU Model RC-RES175 Residential Flat Concealed Pendant SS8464  
 K=4.9, 175°F, 7/16" Orifice, Maximum Spacing 14"x14"  
 Sprinkler head demand: 13 gpm @ 7.04
  - ② RC-RES-18 SENJU Model RC-RES Residential Flat Concealed Pendant SS8464  
 K=4.9, 162°F, 7/16" Orifice, Maximum Spacing 16"x16"  
 Sprinkler head demand: 13 gpm @ 7.04
  - ③ RC-RES-18 SENJU Model RC-RES Residential Flat Concealed Pendant SS8464  
 K=4.9, 162°F, 7/16" Orifice, Maximum Spacing 18"x18"  
 Sprinkler head demand: 17 gpm @ 12
  - ④ VK4680-18 VIKING Model VK4680 Residential Recessed Pendant  
 K=4.9, 155°F, 3/8" Orifice, Maximum Spacing 16"x16"  
 Sprinkler head demand: 13 gpm @ 7
- ① 1st Floor  
 ② 2nd Floor  
 ③ Basement  
 ④ TOTAL



**2 WATER SERVICE DETAIL**  
 F100 NTS

**1 BASEMENT LEVEL**  
 F100 1/4" = 1'-0"



© UPONOR - CONFIDENTIAL