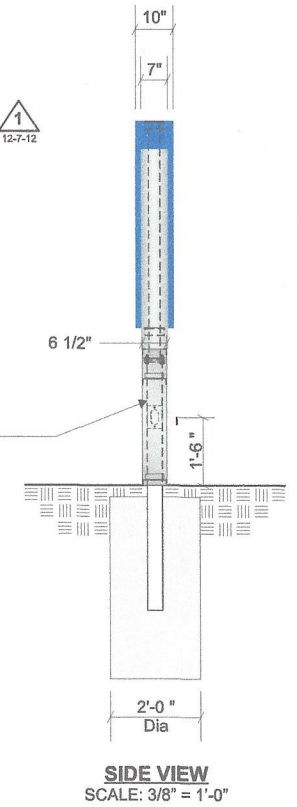
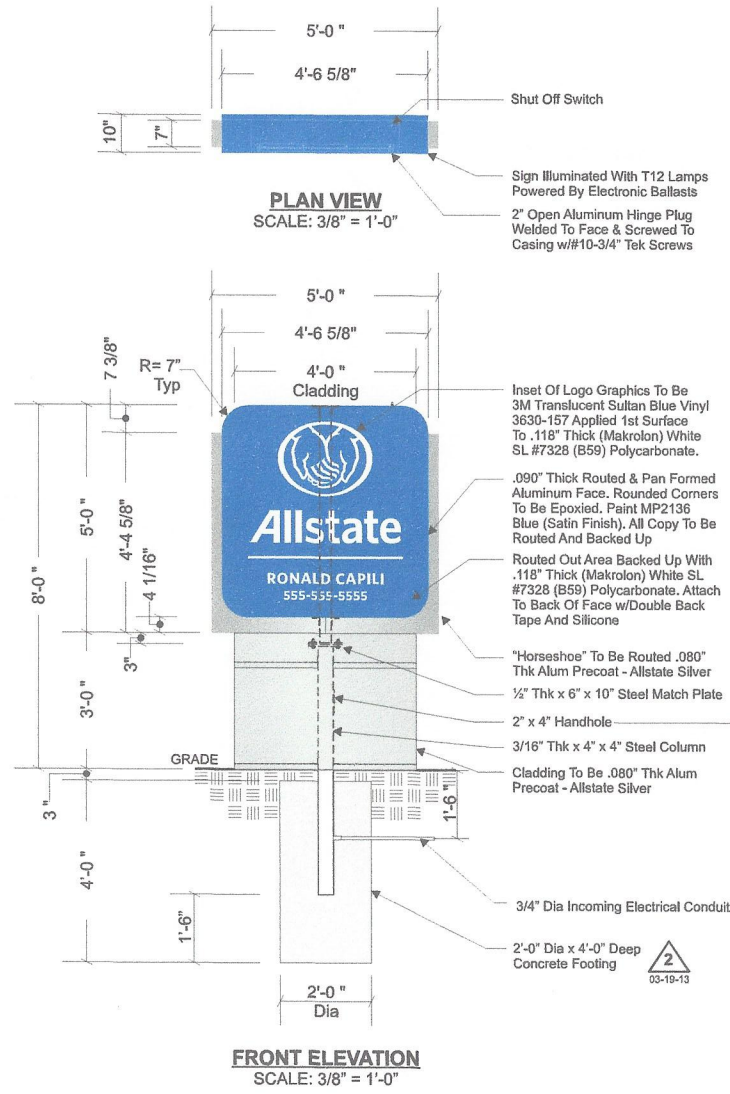
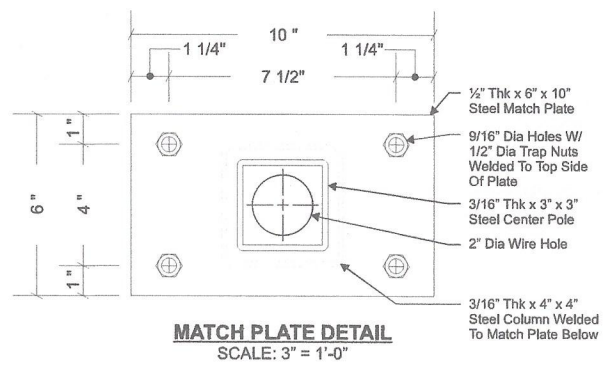


SK 2 SIGN DRAWING



PERMITS  
ONLY

**Electrical Load**  
(2.34) Amps @ 120 Volts  
**Electrical Req'mts**  
(1) 20 Amp/120 Volt Circuits

- STANDARD PYLON NOTES:**
1. Sufficient Primary Circuit In Vicinity Of Sign By Others.
  2. Final Primary Hook-up By Sign Installer, Where Allowed By Local Codes.
  3. Sign Shall Be U.L. Listed.
  4. Soil Assumed To Be Medium Clay, Or Better, With Minimum Soil Bearing Capacity Of 2,500 PSF.
  5. Concrete 2,500 PSI @ 28 Days.
  6. Reinforcing Steel Shall Be ASTM A615 GR-40.
  7. Structural Steel Shall Be ASTM A36.
  8. All Welds Shall Conform To A.W.S Standards.

Note: This sign is intended to be installed in accordance with the requirements of Article 600 of the National Electrical Code and/or other applicable local codes. This includes proper grounding and bonding of the sign.

**Philadelphia Sign  
COMPANY**  
707 West Spring Garden Street  
Palmyra, New Jersey 08065

Phone: 610-329-1440  
Fax: 610-329-3759  
E-mail: wcm@philadelphiasign.com

<b>CUSTOMER:</b>	<b>ALLSTATE</b>
<b>JOB NUMBER:</b>	
<b>SIGN TYPE:</b>	<b>ALST.MON_25</b>
<b>LOCATION:</b>	<b>Various</b>
<b>DATE:</b>	<b>07/06/2012</b>
<b>DRAWN BY:</b>	<b>JLTH</b>
<b>REVISION:</b>	Number: 2 Date: 03/19/2013 By: JTR
<b>SHEET:</b>	<b>1 OF 1</b> ENG DEPT
<b>DWG NUMBER:</b>	<b>B-44750</b>
<b>ENGINEER SEAL:</b>	

**MAX DESIGN WIND SPEED 90 MPH  
EXPOSURE C**

THIS IS AN ORIGINAL UNPUBLISHED DRAWING CREATED BY PSCO. IT IS SUBMITTED FOR YOUR PERSONAL USE IN CONJUNCTION WITH A PROJECT BEING PLANNED FOR YOU BY PSCO. IT IS NOT TO BE SHOWN TO ANYONE OUTSIDE YOUR ORGANIZATION NOR IS IT TO BE USED, COPIED, REPRODUCED, OR EXHIBITED IN ANY FASHION.