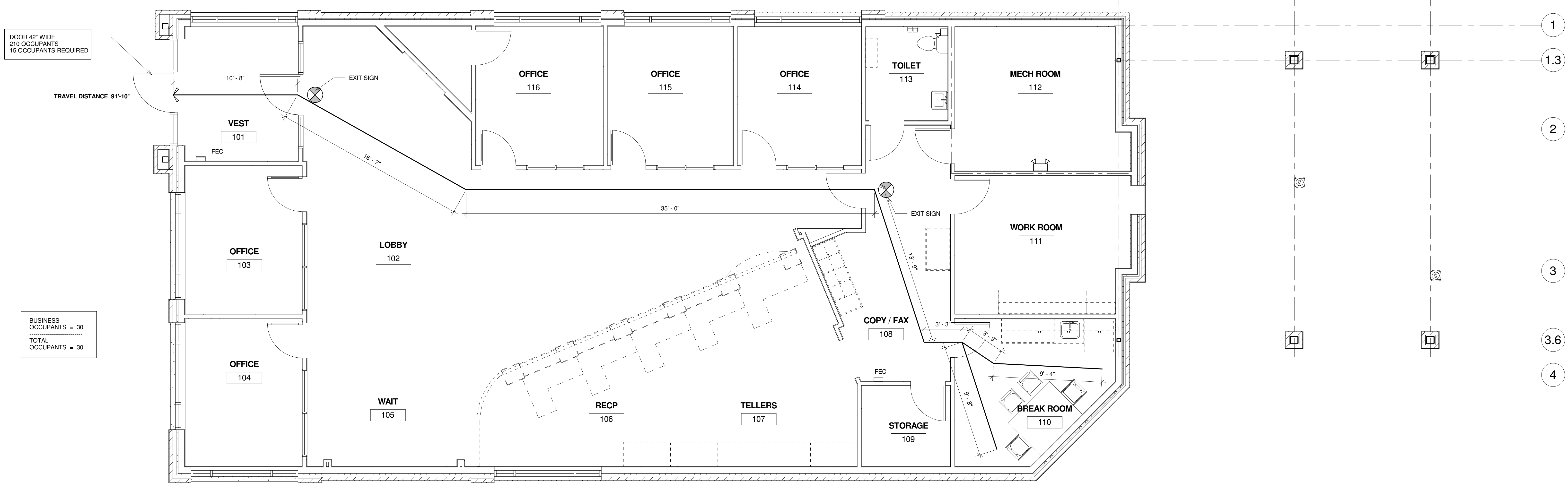


Code Study:			NA - Not Applicable
IBC 2003, NFPA Life Safety 2006			NR - No Requirement
CLASSIFICATIONS	IBC (2003 Edition)	NFPA 101 (2006 Edition)	Conclusion
Use Group	Business (B) - Section 304.1	New Business Occupancies (Chapter 38)	
Height & Area Limitations	Type VB Constr. (Table 503 and 601) Max. Allowable Height Business (B) 2 stories & 40' Max. Allowable Area per Flr. Business (B) 9,000 SF	Type V-000 Construction (NFPA 220, Table 3) (Per Table A.8.2.1.2)	Type VB / V-000 Actual height - 1 story & 27'-2" Business; Actual Area - 3,004 SF
Fire Protection System	Not required per section 903.2.10 Provide fire extinguishers in accordance with section 906.1	Provide fire extinguishers in accordance with 9.7.4.1, Section 38.3.5	Maximum travel distance to extinguisher is 75 feet per NFPA 10
EGRESS			
Occupant Load	Business (B) 1 per 100 gross SF (per table 1004.1.2)	Business Use 1 per 100 SF (per Table 7.3.1.2)	Business Use 30 Occupants
Means of Egress	Single means of egress (per table 1014.1) shall be permitted if single story with less than 50 occupants	Single means of egress shall be permitted if less than 100 feet travel distance. Per Section 38.2.4.3	One means of egress provided.
Egress Width per Occupant	Without Sprinkler System: Doors, Ramps, and Corridors 2" per person (per Table 1005.1) Minimum corridor width shall be not less than 36" (per section 1016.2) Exception 2	Doors, Ramps, and Corridors 2" per person (per Table 7.3.3.1) Minimum corridor width is the greater of that required by Table 7.3.3.1 or 36" (per Section 7.3.4.1)	Minimum corridor width is 44"
Travel Distance to Exits	Without Sprinkler System: Length of exit access travel along natural & unobstructed path: (per Table 1015.1) Distance not to exceed 200 feet.	Without Sprinkler System: Length of travel from any point to reach an exit: Business Distance not to exceed 200 feet.	Business; Distance not to exceed 200 feet.
Common Path of Egress Travel	Distance not to exceed 100 feet (per Section 1013.3.2)	Distance not to exceed 100 feet (per Section 38.2.5.3.2)	Distance not to exceed 100 feet.
Dead End Corridors	Distance not to exceed 20 feet (per Section 1016.3)	Business Use Distance not to exceed 20ft. (per Section 38.2.5.2.2)	Business; Distance not to exceed 20ft.
FIRE RESISTANCE RATINGS based on Type VB construction (IBC Table 601 or as noted)			
Exterior Walls	0-hour Nonbearing (Table 602)	0-hour Nonbearing (Table A.8.2.1.2)	0-hour
Columns and Framing	0-hour (Table 601)	0-hour (Table A.8.2.1.2)	0-hour
Interior Walls	0-hour Bearing 0-hour Nonbearing (see Table 601 note f)	0-hour (Table A.8.2.1.2)	0-hour
Fire Barrier	2-hour (see Table 706.3.7)	NA	2-hour
Fire Separation Assemblies	2-hour	NA	2-hour
Corridor Fire-Resistance Rating	Without Sprinkler System: 1-hour where serving greater than 30 occupants (per Table 1016.1)	Without Sprinkler System: 1-hour or 0-hour if the exits are available from an open floor plan.	1-hour or 0-hour if the exits are available from an open floor plan.
Nonbearing Partitions	0-hour (per table 601 see note f)	0-hour (see note #1)	0-hour
Floor Construction	0-hour (per table 601)	0-hour (Table A.8.2.1.2)	0-hour
Roof Construction	0-hour (per table 601)	0-hour (Table A.8.2.1.2)	0-hour
PLUMBING FIXTURE REQUIREMENTS (Maine State Internal Plumbing Code)			
Water Closets	Unisex 10 or less is one		
Urinals	NA		
Lavatories	Unisex 10 or less is one		
Drinking Fountains	NA		
Note #1 - General storage rooms, boiler and furnace rooms require smoke partitions complying with 302.1.1.1 (IBC) and 8.7.1.2 (NFPA 101-Life Safety Code)			



DOOR 42" WIDE
210 OCCUPANTS
15 OCCUPANTS REQUIRED

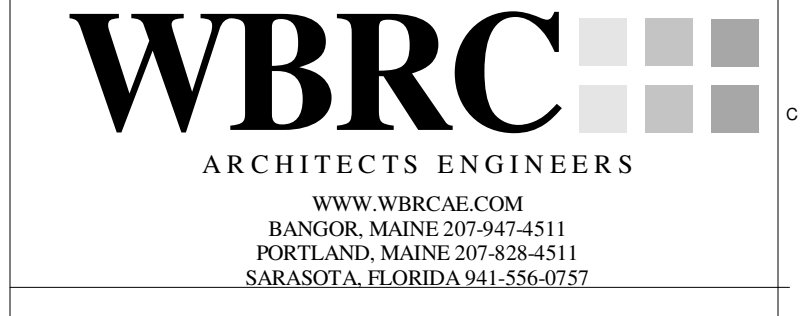
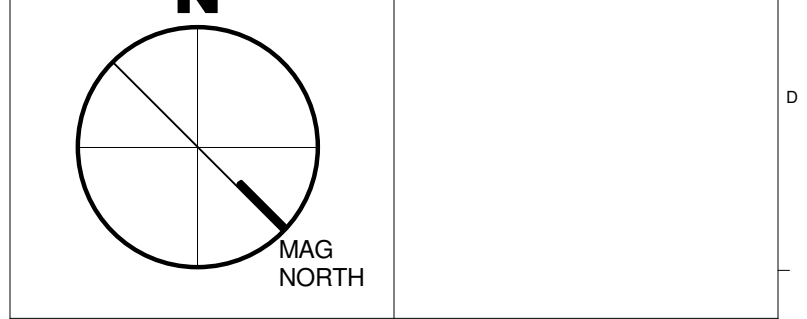
TRAVEL DISTANCE 91'-10"

BUSINESS
OCCUPANTS = 30
TOTAL
OCCUPANTS = 30

3	REVISED CODE STUDY AGAIN	09.24.10
2	REVISED CODE STUDY	09.23.10
1	REISSUED CODE PLAN	09.15.10
REV.	DESCRIPTION	DATE

CONSTRUCTION DOC'S
06.30.10

CURRENT ISSUE STATUS:



BANGOR SAVINGS BANK - PORTLAND
PROJECT: ALLEN AVE. PORTLAND, MAINE

CODE COMPLIANCE PLAN

A1 CODE COMPLIANCE PLAN
1/4" = 1'-0" AE201

SHEET TITLE	A1 CODE COMPLIANCE PLAN	
WBRC CAD FILE	C:\Work\Local Files\214793 BSB - Allen Ave Portland_keth.lvw\A1.dwg	
PROJECT No.	2747.93	GRAPHIC SCALE 1" = 10'
SCALE	As indicated	
PROJECT MANAGER	DCM	SHEET No.
DRAWN BY	KRJ	GI003
CHECKED BY	GSF	

9/24/2010 9:46:02 AM C:\Revit Local Files\214793 BSB - Allen Ave Portland_keth.lvw\A1.dwg