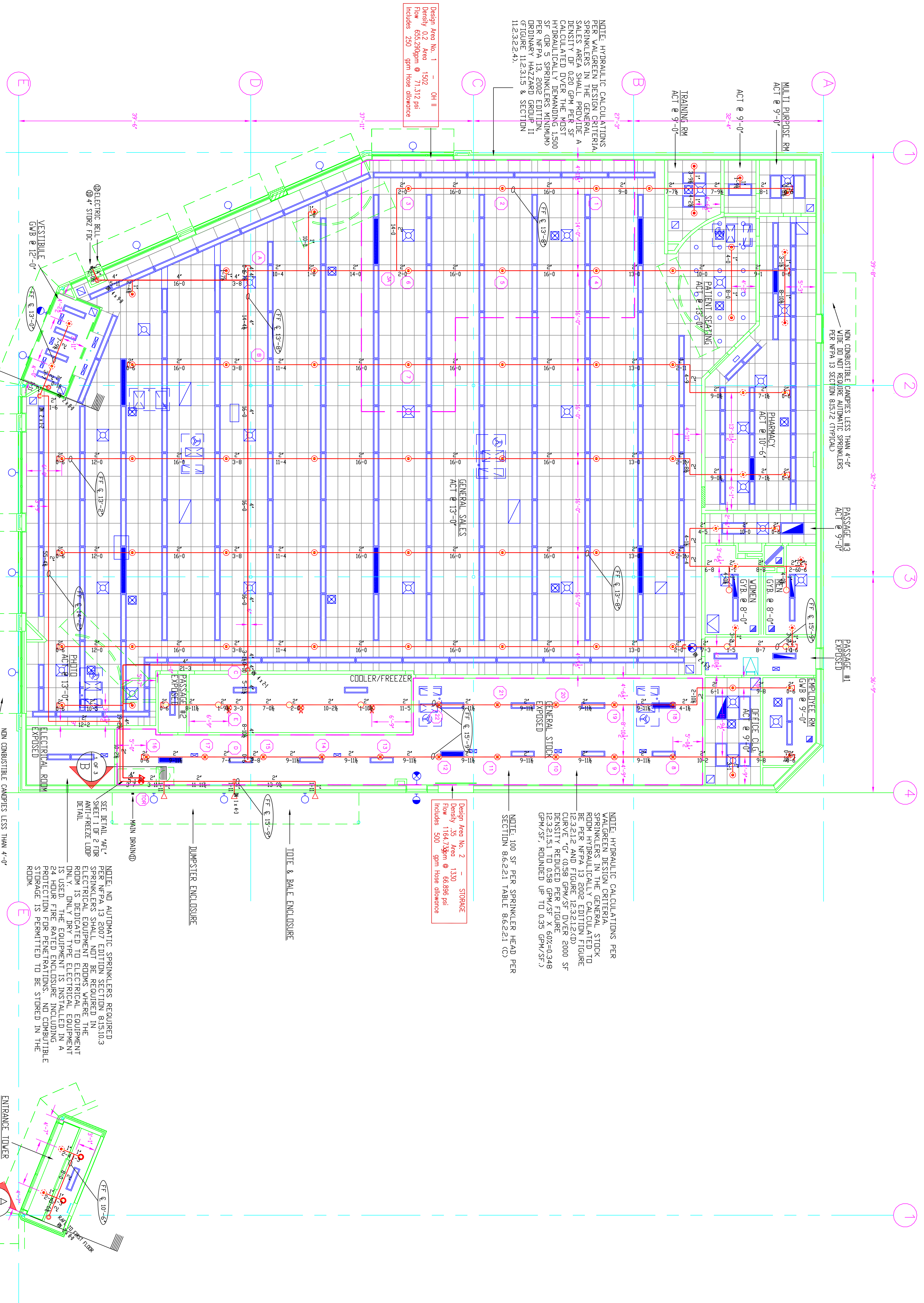
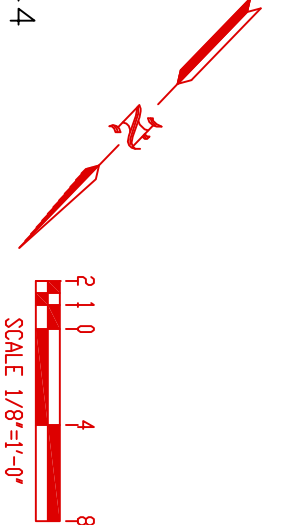


DENALI
FIRE PROTECTION, INC.
DESIGN INSTALLATION SERVICE
78 ROLLER RINK RD.
DORCHESTER, MAINE 04270
(207) 539-4226 FAX (207) 539-8544



NOTE: HYDRAULIC CALCULATIONS PER VAUGREEN DESIGN CRITERIA SPRINKLERS IN THE GENERAL SALES AREA SHALL PROVIDE A MINIMUM OF 1.500 GPM/ST. HYDRAULICALLY DEMANDING 1,500 SF. (OR 5 SPRINKLERS MINIMUM) PER VAUGREEN DESIGN CRITERIA PER NFPA HAZARD GROUP II (FIGURE 11.2.3.15 & SECTION 11.2.3.2.2.4).

Design Area No. 1 - OH II
Density 0.2 Area 1502
Flow 655.28gpm @ 71.312 psi
Includes 250' gpm hose allowance

Design Area No. 2
Density 0.2 Area 1130
Flow 1164.7gpm @ 66.886 psi
Includes 500' gpm hose allowance

NOTE: HYDRAULIC CALCULATIONS PER VAUGREEN DESIGN CRITERIA SPRINKLERS IN THE GENERAL STOCK ROOM HYDRAULICALLY CALCULATED TO 12.312 AND FLOOR 12.312 (D) SQUARE CURVE *G* (0.98 GPM/SF OVER 2000 SF DENSITY REDUCED PER FIGURE 6.07-0.948 GPM/SF, ROUNDED UP TO 0.95 GPM/SF)

NOTE: 100 SF PER SPRINKLER HEAD PER SECTION 8.6.2.2.1 TABLE 8.6.2.2.1 (C)

FLOOR PLAN
FINISH FLOOR ELEVATION: 100'-0"
AREA PROTECTED: 13496' SQ. FT.

SECOND FLOOR PLAN
FINISH FLOOR ELEVATION: 117'-2"
AREA PROTECTED: 139' SQ. FT.

- CENTRAL MODEL EC-147 WHITE RECESSED PENDENT K-FACTOR = 140 SN H = 176231' SYMBOL = ○
- CENTRAL MODEL VLD-231R BRASS UPRIGHT K-FACTOR = 112 SN H = 179311' SYMBOL = ●
- CENTRAL MODEL DS-C OR WHITE CONCEALED DRI PENDENT K-FACTOR = 56 SN H = 179351' SYMBOL = ○
- CENTRAL MODEL RTT OR WHITE CONCEALED PENDENT K-FACTOR = 56 SN H = 179351' SYMBOL = ●
- CENTRAL MODEL TY-FRP OR BRASS UPRIGHT K-FACTOR = 56 SN H = 179311' SYMBOL = ○
- CENTRAL MODEL TY-L OR WHITE SIDEWALL K-FACTOR = 56 SN H = 179311' SYMBOL = ◁

- CENTRAL MODEL 20K BRASS UPRIGHT K-FACTOR = 56 SN H = 179311' SYMBOL = ●
- CENTRAL MODEL RTT OR WHITE CONCEALED PENDENT K-FACTOR = 56 SN H = 179351' SYMBOL = ○

- General Notes**
- All Pipe Installations are to be Field Measured Prior to Fabrication
 - All Dimensions Shown are Center to Center.
 - High Temperature Heads are to be Field Located Where Required.
 - All Pipes and Hangers are to be Installed per NFPA #13.
 - Hangers are to be UL Listed and F.M. Approved.

Symbol	Description	Total This Sheet	Number of Sprinklers
(+)	Head/Inch		Total This Job
(-)	Box Above Finished Floor		
(+/-)	Box of Top of Steel		
(-)	Ceiling Height		
(-)	Device Hanger Location		
(-)	Rise Up or Down		

Drawing Title	Contract No.	Revisions	Date
FP2 FLOOR PLAN	C31-09		
Drawn By	TMB		
Scale	1/8" = 1'-0"		
Date	9/30/09		
Approval By	SMK/PPB		

Contractor:
WALGREENS PHARMACY
ALLEN AVE & WASHINGTON AVE
PORTLAND, MAINE

Contractor:
DENALI FIRE PROTECTION, INC.
78 ROLLER RINK ROAD
OXFORD, MAINE 04270