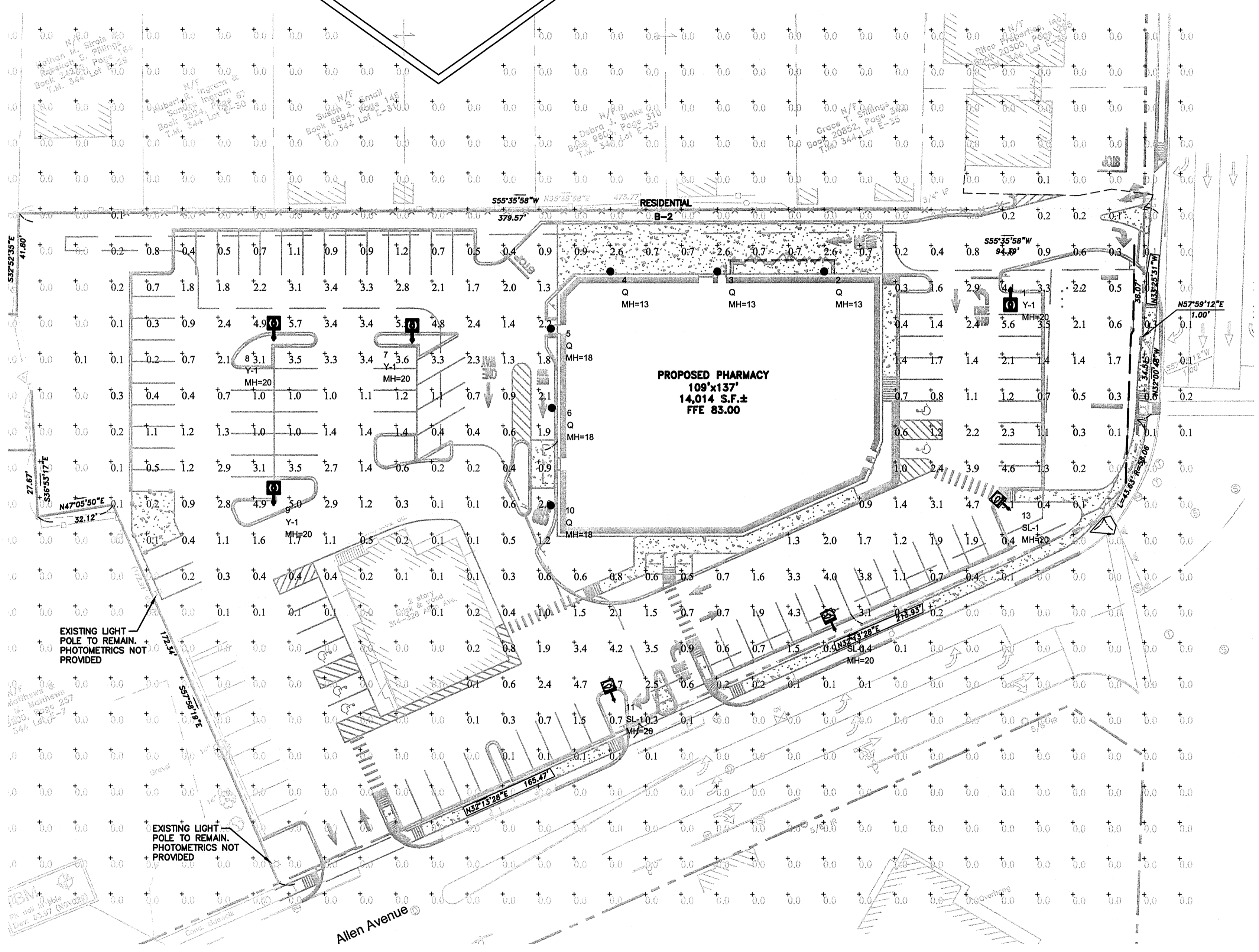


****ATTENTION****
THIS LAYOUT DOES NOT MEET
WALGREEN STANDARD SPECIFICATIONS
DUE TO STRICT CITY SITE
LIGHTING REQUIREMENTS.

**ROTATE REFLECTOR
FOR CORRECT SOCKET POSITION
BEFORE FIXTURE INSTALLATION**



| Symbol | Qty | Label | Lumens | LLF | Description | Remarks |
|--------|-----|-------|--------|-------|------------------------------|--------------|
| Q | 6 | Q | 3400 | 0.750 | MHP-S-50 | Wall Mounted |
| Y-1 | 4 | Y-1 | 24000 | 0.750 | WAG-HPTR-3F-250-MT-ADV (CMH) | |
| SL-1 | 3 | SL-1 | 24000 | 0.750 | WAG-HPTR-SL-250-MT-ADV (CMH) | |

| Label | CalcType | Units | Avg | Max | Min | Avg/Min | Max/Min | # Pts | PtSpLr | PtSpTb |
|--------------------|-------------|-------|------|-----|-----|---------|---------|-------|--------|--------|
| A | Illuminance | Fc | 0.48 | 5.7 | 0.0 | N.A. | N.A. | 775 | 15 | 15 |
| PROPERTY LINE | Illuminance | Fc | 0.22 | 1.3 | 0.0 | N.A. | N.A. | 62 | 15 | N.A. |
| WALGREEN'S PARKING | Illuminance | Fc | 1.91 | 5.7 | 0.2 | 9.55 | 28.50 | 108 | | |

| SeqNo | Label | X | Y | Z | Orient | Tilt |
|-------|-------|-------|-------|----|---------|------|
| 1 | Y-1 | 191 | 103.5 | 20 | 270 | 0 |
| 2 | Q | 112.5 | 108.7 | 13 | 90 | 0 |
| 3 | Q | 67.5 | 108.7 | 13 | 90 | 0 |
| 4 | Q | 22.5 | 108.7 | 13 | 90 | 0 |
| 5 | Q | -1 | 86.5 | 18 | 180 | 0 |
| 6 | Q | -0.5 | 53.5 | 18 | 180 | 0 |
| 7 | Y-1 | -60.8 | 80.6 | 20 | 90 | 0 |
| 8 | Y-1 | -119 | 81.5 | 20 | 90 | 0 |
| 9 | Y-1 | -119 | 13 | 20 | 90 | 0 |
| 10 | Q | -1 | 13 | 18 | 180 | 0 |
| 11 | SL-1 | 24.5 | -69 | 20 | 110 | 0 |
| 12 | SL-1 | 117.5 | -39.5 | 20 | 115 | 0 |
| 13 | SL-1 | 191 | 11 | 20 | 138.215 | 0 |

Total Quantity = 13

| NO. | DATE | BY | DESCRIPTION | CONST |
|-----|----------|-----|---------------------------|-------|
| - | 09/22/08 | MPM | RESPONSE TO CITY COMMENTS | |

REVISIONS
CERTIFICATION AND SEAL

I HEREBY CERTIFY THAT THIS PLAN AND SPECIFICATION WAS PREPARED BY ME OR UNDER MY DIRECT SUPERVISION AND THAT I AM A DULY REGISTERED ARCHITECT OR ENGINEER UNDER THE LAWS OF THE STATE OF MAINE AS SIGNIFIED BY MY HAND AND SEAL.

STORE NUMBER 12326
PROJECT NAME
WALGREENS - STORE #12326
(NWC) WASHINGTON AND ALLEN
PORTLAND, MAINE

DRAWING TITLE
PHOTOMETRICS PLAN

| | | |
|------------------------|------------------|--------------|
| CADD PLOT: | SCALE: 1"=20' | DRAWING NO.: |
| VOID PLOT: | DRAWN BY: CAG | E0.1A |
| SUPERSEDES PLAN DATED: | DATE: | |
| | REVIEWED BY: JIM | OF __ DWGS. |



GP Gorrill-Palmer Consulting Engineers, Inc.
PO Box 1237 Engineering Excellence since 1998 207-657-6910
15 Shaker Road 770-486-4582
Gray, ME 04039 770-486-4999 fax
E-Mail: mailbox@gorrillpalmer.com



Cooper Lighting CFC
Applications Engineering
1121 Highway 74 South
Peachtree City, Georgia 30289
770-486-4582
770-486-4999 fax
e-mail: applications@cooperlighting.com

NOTE: THIS PLAN SET IS ISSUED FOR CONSTRUCTION.