

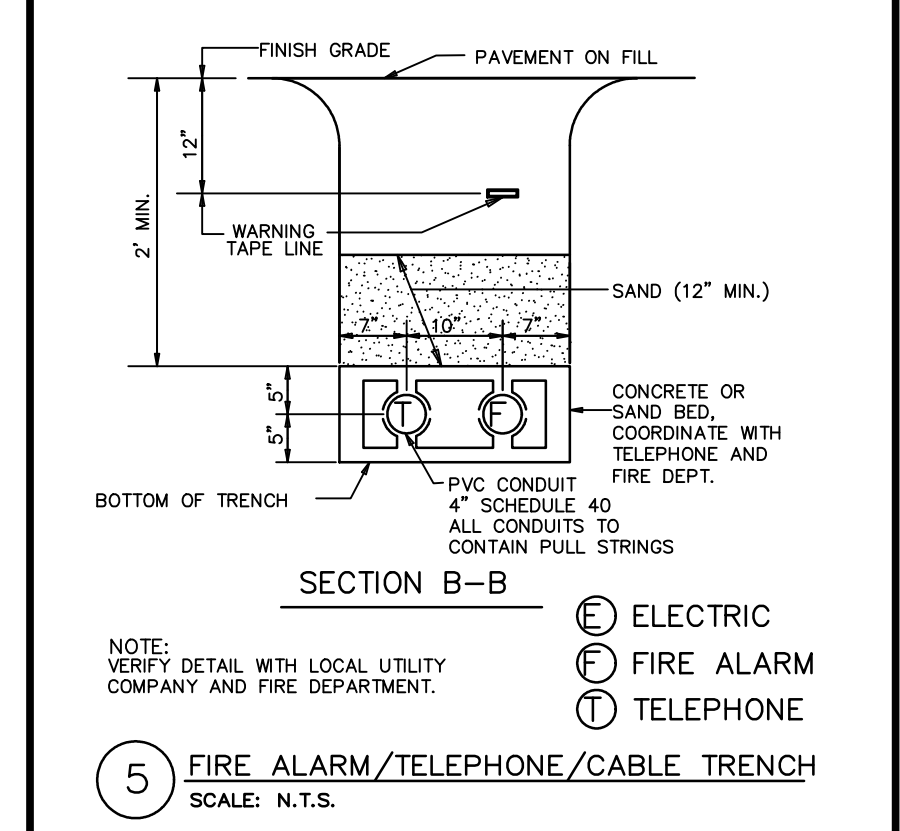
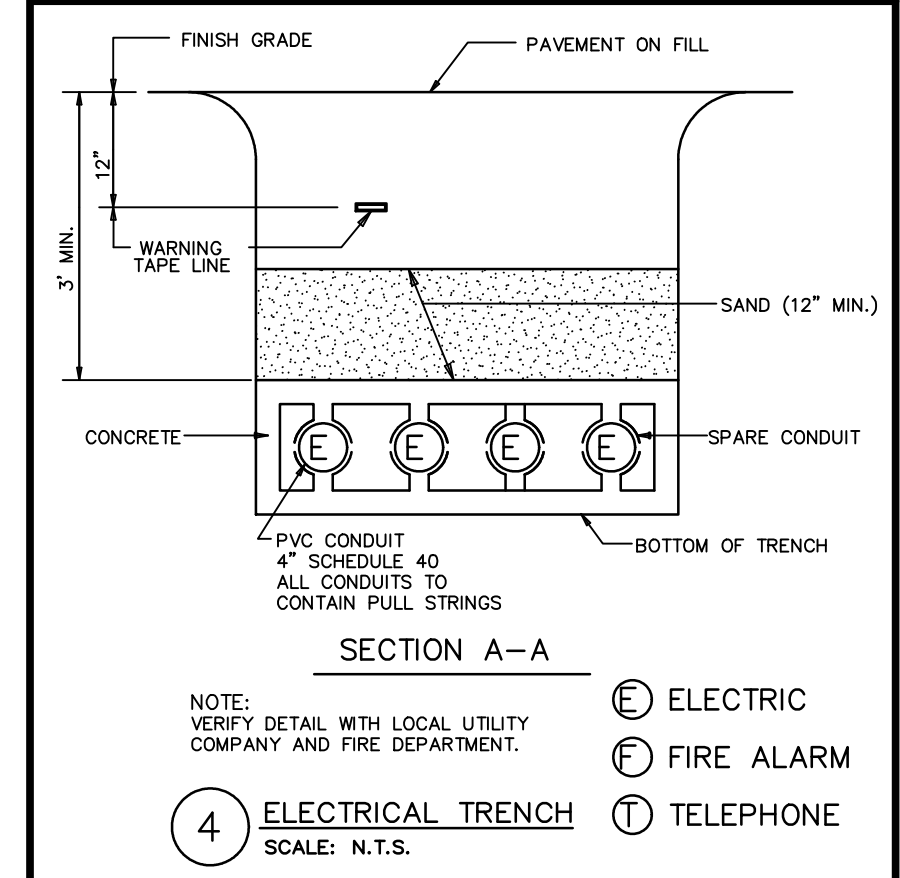
DRAWINGS/SPECIFICATIONS BY:

- WALGREENS'
- LANDLORD'S CONSULTANT

ALL CONSTRUCTION WORK, UNLESS NOTED OTHERWISE, BY:

- WALGREENS' CONTRACTOR
- LANDLORD'S CONTRACTOR (TURNKEY CONSTRUCTION)

STORE	BUILDING
NEW <input type="checkbox"/>	NEW <input checked="" type="checkbox"/>
REMODELING <input type="checkbox"/>	EXISTING <input type="checkbox"/>
RELOCATION <input type="checkbox"/>	NEW SHELL ONLY <input type="checkbox"/>
OTHERS <input type="checkbox"/>	



NO.	DATE	BY	DESCRIPTION	CONST
REVISIONS				
CERTIFICATION AND SEAL				

I HEREBY CERTIFY THAT THIS PLAN AND SPECIFICATION WAS PREPARED BY ME OR UNDER MY DIRECT SUPERVISION AND THAT I AM A DULY REGISTERED ARCHITECT OR ENGINEER UNDER THE LAWS OF THE STATE OF MAINE AS SIGNIFIED BY MY HAND AND SEAL.

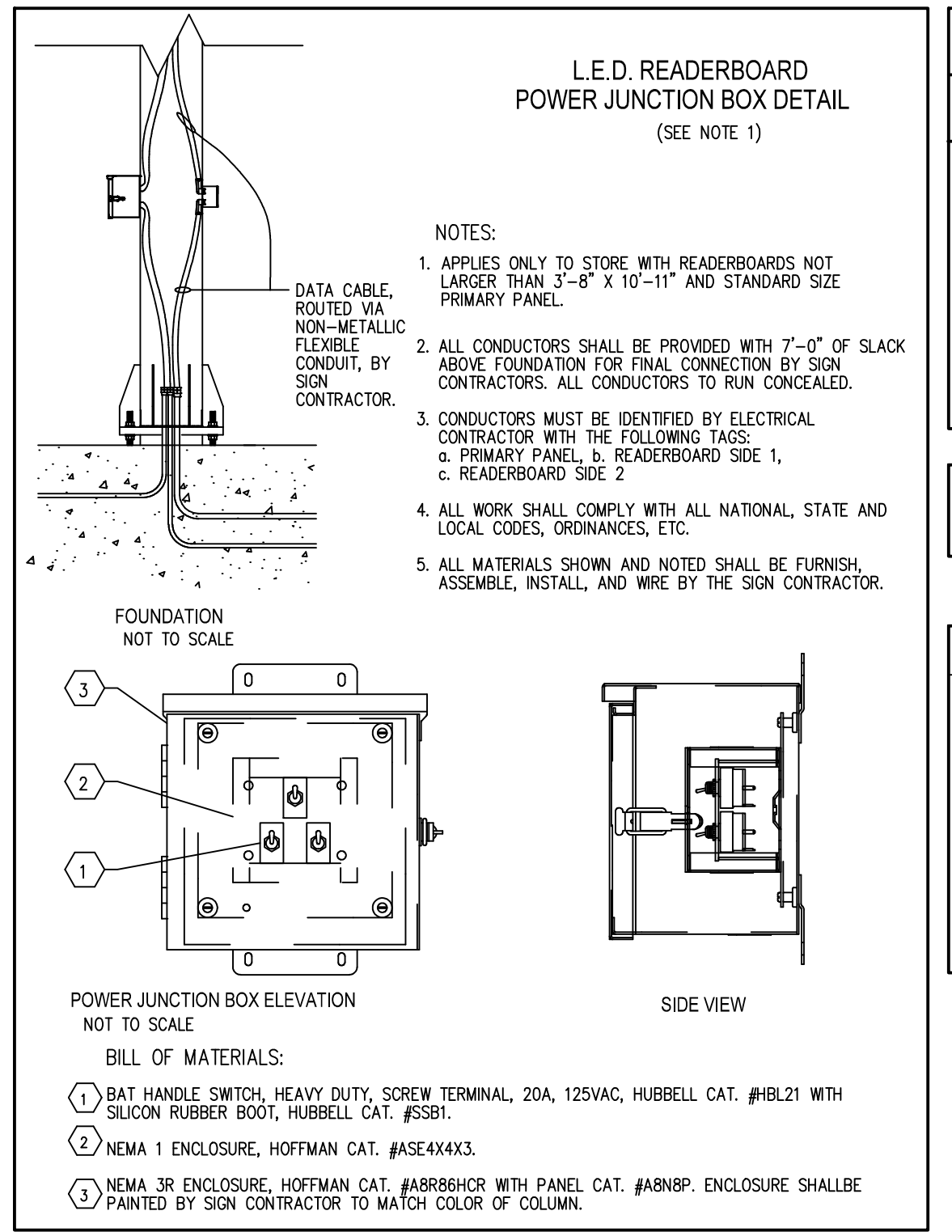
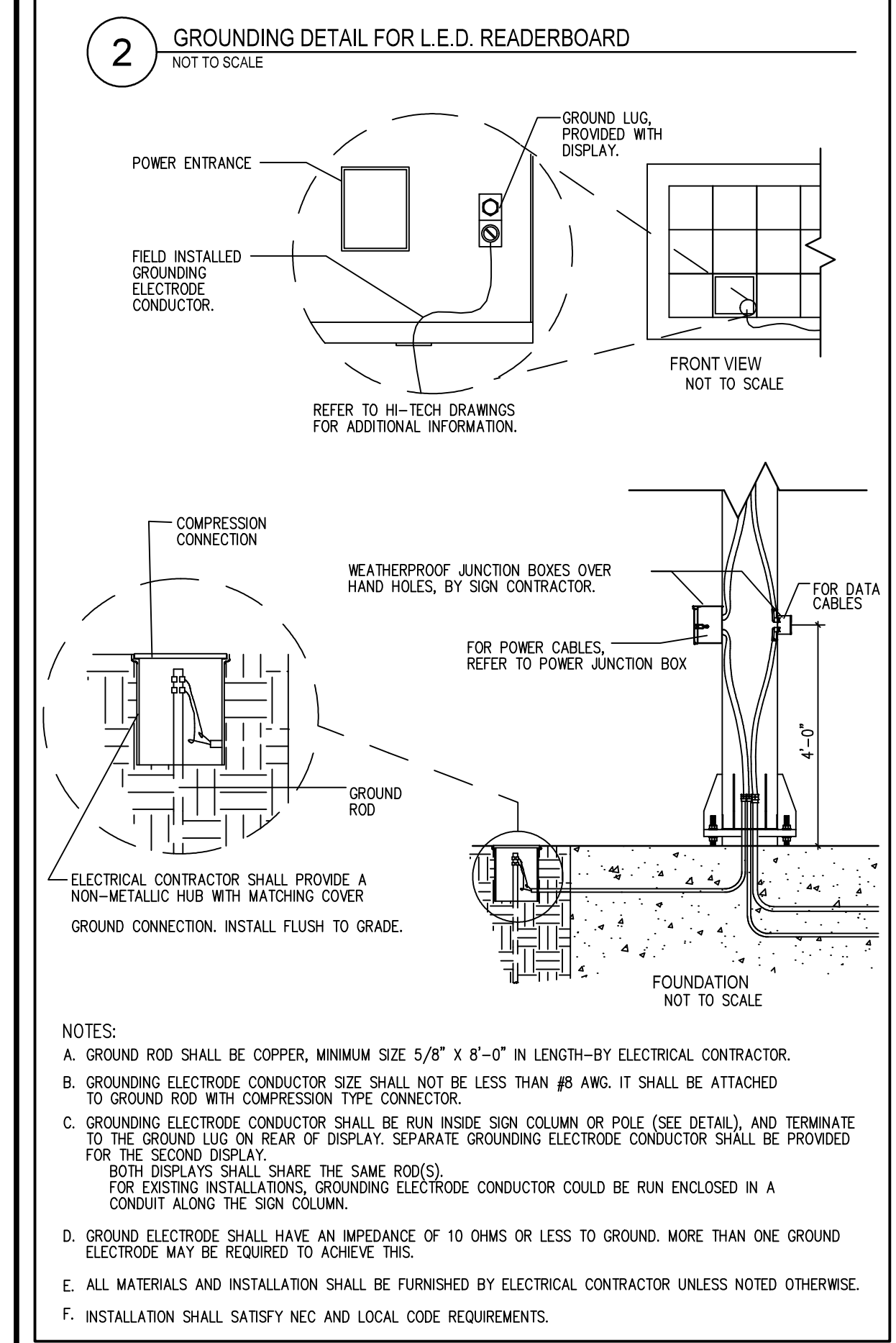
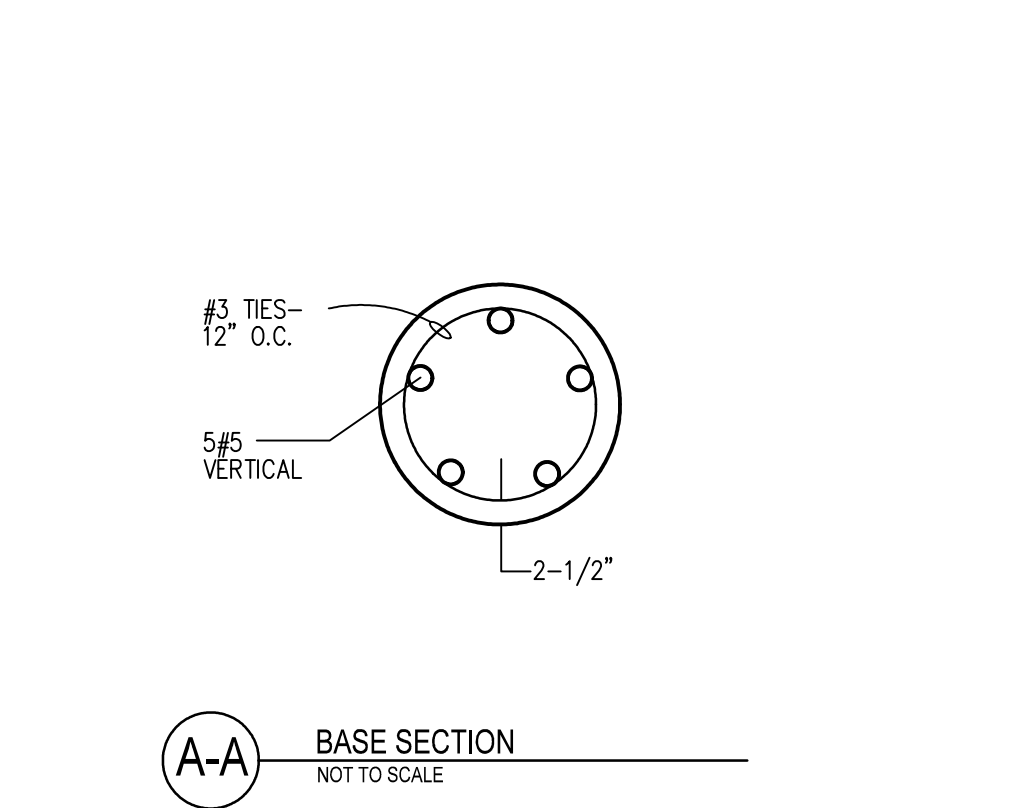
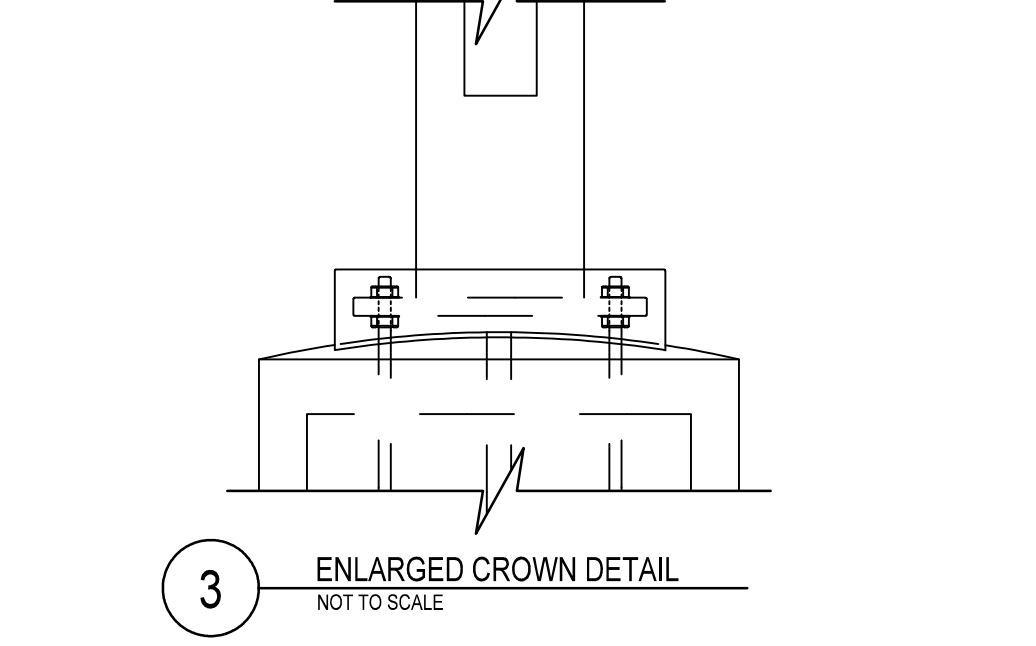
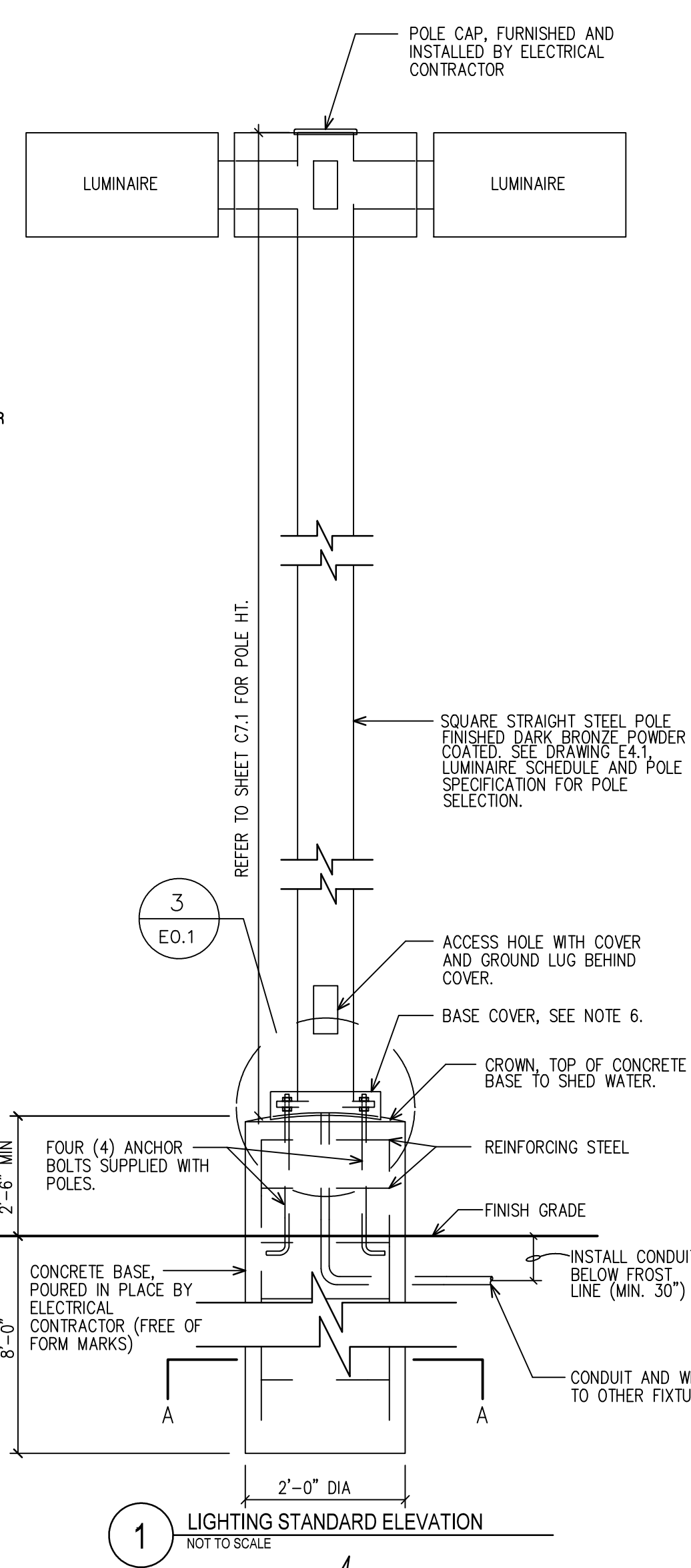
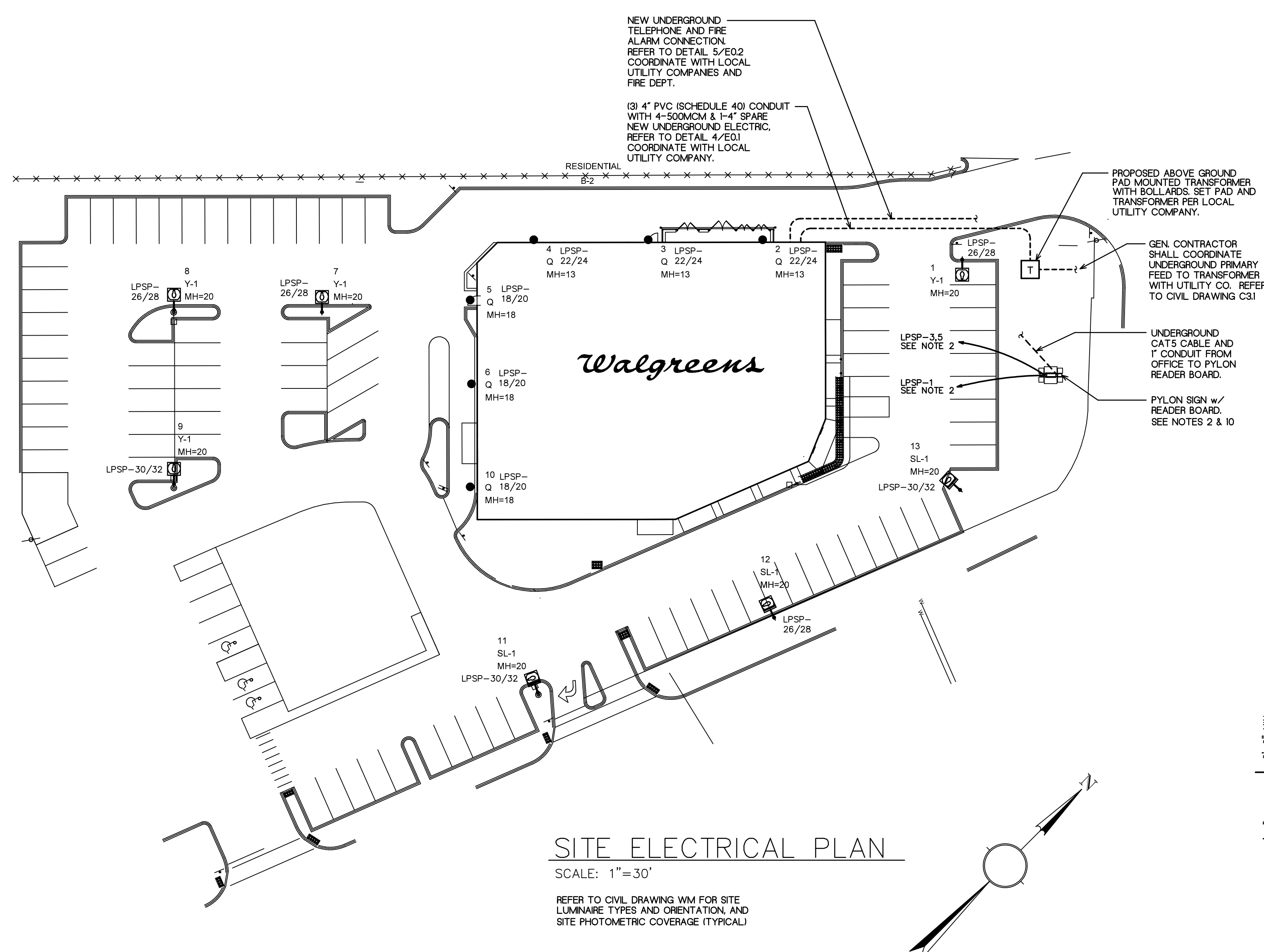
FISCAL 2007 CRITERIA - STORE #12326

WALGREENS
 (NWC) WASHINGTON & ALLEN AVES.
 PORTLAND, MAINE

DRAWING TITLE
SITE ELECTRICAL PLAN

CADD PLOT:	SCALE: AS NOTED	DRAWING NO.
VOID PLOT:	DRAWN BY: TD	E0.1
RELEASED TO CONSTRUCTION	DATE: 3-26-09	
	REVIEWED BY: SAM	

- NOTES**
- ALL WORK SHOWN SHALL COMPLY WITH ALL NATIONAL, STATE AND LOCAL CODES, ORDINANCES, ETC.
 - NOT USED.
 - FURNISH AND INSTALL THE DRIVE ALARM SENSOR, WITH CABLE ROUTED BACK TO THE CONTROL PANEL, WHICH IS MOUNTED ON THE INTERIOR WALL OF THE DRIVE-THRU WINDOW UNIT. SEE DRAWING E1.2 FOR ELECTRICAL REQUIREMENTS.
 - SEE LUMINAIRE SCHEDULE ON DRAWING E4.1 FOR LUMINAIRE INFORMATION.
 - THE SITE LIGHTING IS BASED ON:
 - MCGRAW-EDISON
 - PROVIDE CROWN ON TOP OF CONCRETE BASE TO COMPLETELY SHED WATER.
 - NOT USED.
 - NOT USED.
 - GROUP 8, DRAWING E2.1A OF CONTROL SCHEDULE CONTROLS LIGHTS REQUIRED TO ILLUMINATE PATH OF TRAVEL FROM THE STORE ENTRANCE TO THE DESIGNATED EMPLOYEE PARKING SPACES. ACCORDING TO SPECIFIC LAYOUT SHOWN ON CRITERIA DRAWING E0.1, LIGHTS ON THREE POLES ARE INCLUDED IN GROUP 8. SELECTION OF POLES IS BASED ON THE FOLLOWING LOGIC:
 - POLE 1 - CLOSEST TO INTERSECTION
 - POLE 2 - NEXT TO THE CLOSEST TO INTERSECTION ON STREET WITH HIGHER TRAFFIC COUNT (MAIN STREET)
 - POLE 3 - TWO FOLLOWING OPTIONS ARE CONSIDERED FOR POLE LOCATION:
 - OPTION 1-ALONG PROPERTY LINE IF PARKING STALLS ARE PRESENT AND NON-RESIDENTIAL
 - OPTION 2-ALONG STREET WITH LOWER TRAFFIC COUNT.
 NOTE THAT THE SPECIFIC LIGHTING SCHEME OUTLINED ABOVE APPLIES ONLY TO THE PROTOTYPICAL SITE PLAN SHOWN HEREIN. FOR OTHER SITE LAYOUTS, PLEASE CONSULT WITH THE WALGREENS PROJECT ARCHITECT TO DETERMINE WHICH POLES SHALL BE PART OF GROUP 8. IN THE CASE OF 24 HOUR STORES, POLES DESIGNATED TO BE PART OF GROUP 8 MUST STILL BE INCLUDED, SINCE THE 24 HOUR DESIGNATION MIGHT CHANGE.
 - PROVIDE A MINIMUM OF TWO (2) 1" DIAMETER PVC CONDUITS TO PYLON SIGN(S) TO SEPARATE DATA CABLE AND POWER CIRCUITS. 2"-Ø SEPARATION SHALL BE MAINTAINED BETWEEN POWER AND DATA CONDUITS. RUN DATA CONDUIT (WITH #12 WIRE FOR PULL STRING) TO OFFICE SPACE. SEE DRAWING E1.3 HEXAGON 14 - ETHERNET SYSTEM, FOR EXACT LOCATION. ALL CONDUIT AND POWER SHALL BE FURNISHED AND INSTALLED BY THE ELECTRICAL CONTRACTOR. PYLON DATA CABLE FURNISHED AND INSTALLED BY WALGREEN CONTRACTOR.
 - THE SITE LIGHTING POLE SHALL BE USED WITH A WIND SPEED OF:
 - 90 MPH AND BELOW
 - 120 MPH AND BELOW
 - 150 MPH AND BELOW
 - IN RESIDENTIAL AREAS, PROVIDE HOUSE SIDE SHIELD ON PARKING LIGHT FIXTURES THAT ARE LOCATED ON ABUTTING PROPERTY LINE TO PREVENT LIGHT TRESSPASS.



REFLECTOR ORIENTATION LEGEND

ROTATE REFLECTOR FOR CORRECT SOCKET POSITION BEFORE FIXTURE INSTALLATION

	2F	X-1 OR X1-WM	Y-1 OR Y1-WM	Z-1 OR Z1-WM	5F
LUMARK					

DURING INSTALLATION OF SITE LIGHTING LUMINAIRES, REFER TO CIVIL DRAWING C-7 FOR CORRECT REFLECTOR ORIENTATION AND INSTALLATION INSTRUCTIONS.

LED READERBOARD PANEL ELECTRICAL DATA

VENDORS	OPTIONS	DESCRIPTION	AMPS	VA (PER FACE)	CIRCUITS	PANEL, CIRCUIT#
LED READER-BOARD (THERE ARE TWO(2) FACES ON TYPICAL READER-BOARD)	LED (OPTION #1)	3'-8" X 10'-11" GROUND SOLID RED - PHASE III	-----	1900 / 600	(2)-20 AMP, 120V (PER SIGN)	LSP, CKT # 3 & 5
	LED (OPTION #2)	2'-8" X 8'-8" GROUND SOLID RED - PHASE III	-----	1150 / 350	(2)-20 AMP, 120V (PER SIGN)	LSP, CKT # 3 & 5
	LED (OPTION #3)	5'-0" X 15'-4 1/2" GROUND RED	-----	4300	(2)-2/P-30AMP, 120V (PER SIGN) CKT # 9/11	LSP, CKT # 3/5 & 9/11
	LED (OPTION #4)	2'-8" X 5'-9" - RED BLADE	-----	750 / 250	(1)-20 AMP, 120V (PER SIGN)	LSP, CKT # 3

NOTE: MAXIMUM VALUE REPRESENTS AN UNLIKELY EVENT WHEN ALL THE PIXELS ARE ON AT THE SAME TIME. TYPICAL VALUES SHOULD BE UTILIZED FOR DEMAND CALCULATIONS.

PRIMARY PANEL ELECTRICAL DATA

PRIMARY PANEL	LAMPS	BALLAST	LAMPS	V.A.	CIRCUITS	PANEL, CIRCUIT#
(8) F120T12 CWO	(2) ASB-2040-24-BL (ADVANCE)		8.8	1056	(1)-20AMP, 120V	LSP, CKT # 1