

DRAWINGS/SPECIFICATIONS BY:  
 WALGREENS  
 LANDLORD'S CONSULTANT

ALL CONSTRUCTION WORK, UNLESS NOTED OTHERWISE, BY:  
 WALGREENS CONTRACTOR  
 LANDLORD'S CONTRACTOR (TURNKEY CONSTRUCTION)

STORE	BUILDING
NEW <input checked="" type="checkbox"/>	NEW <input checked="" type="checkbox"/>
REMODELING <input type="checkbox"/>	EXISTING <input type="checkbox"/>
RELOCATION <input type="checkbox"/>	NEW SHELL ONLY <input type="checkbox"/>
OTHERS <input type="checkbox"/>	

SIGN AREA SUMMARY	
ID PANEL:	59.67 S.F.
READER BOARD PANEL:(10'-11" X 3'-8")	40.03 S.F.
TOTAL SIGN AREA:	99.70 S.F.

GENERAL NOTES:  
THE READER BOARD PYLON SIGN MUST BE INSTALLED AS THE FIRST PRIORITY IN THE CONSTRUCTION SCHEDULE.  
THE FOUNDATION WITH STUBBED-IN CONDUITS WILL BE INSTALLED BY THE LANDLORD'S CONTRACTOR AT THE EARLIEST POSSIBLE DATE AFTER THE EXECUTION OF THE LEASE.  
THE PYLON SIGN WILL BE ELECTRIFIED AS SOON AS POSSIBLE AFTER INSTALLATION.

SHOP DRAWINGS:  
SIGN CONTRACTOR SHALL SUBMIT (2) COPIES OF SHOP DRAWINGS TO WALGREENS FOR APPROVAL PRIOR TO CONSTRUCTION.  
ORIENTATION:  
SIGN FACE SHALL BE PERPENDICULAR TO THE MAJOR STREET. FOR ANY VARIATION TO ABOVE, SITE CONDITIONS SHALL GOVERN PROPER ORIENTATION-AS APPROVED BY WALGREENS.

WORK RESPONSIBILITY:  
● TURNKEY (L.L.) CONSTRUCTION OF DRUG STORE: WALGREENS SIGN CONTRACTOR WILL PROVIDE SIGN CABINETS, TUBE STEEL SIGN, LEGS, AND BOLT CAGE. ELECTRICAL POWER, DATA CONDUIT, FOUNDATIONS, AND MONUMENT SIGN BASES ARE BY LANDLORD'S CONTRACTOR.

COORDINATIONS:  
FOUNDATION CONTRACTOR, PRIOR TO INSTALLING FOUNDATION, SHALL:  
1. VERIFY PERMIT REQUIREMENTS WITH WALGREENS SIGN CONTRACTOR  
2. OBTAIN BOLT CAGE FROM WALGREENS SIGN CONTRACTOR  
SIGN CONTRACTOR SHALL:  
1. REFER TO CIVIL DRAWING D5.1 FOR SIGN SPECIFICATIONS.

PERMIT:  
ALL REQUIRED PERMITS SHALL BE OBTAINED BY WALGREEN'S SIGN CONTRACTOR.

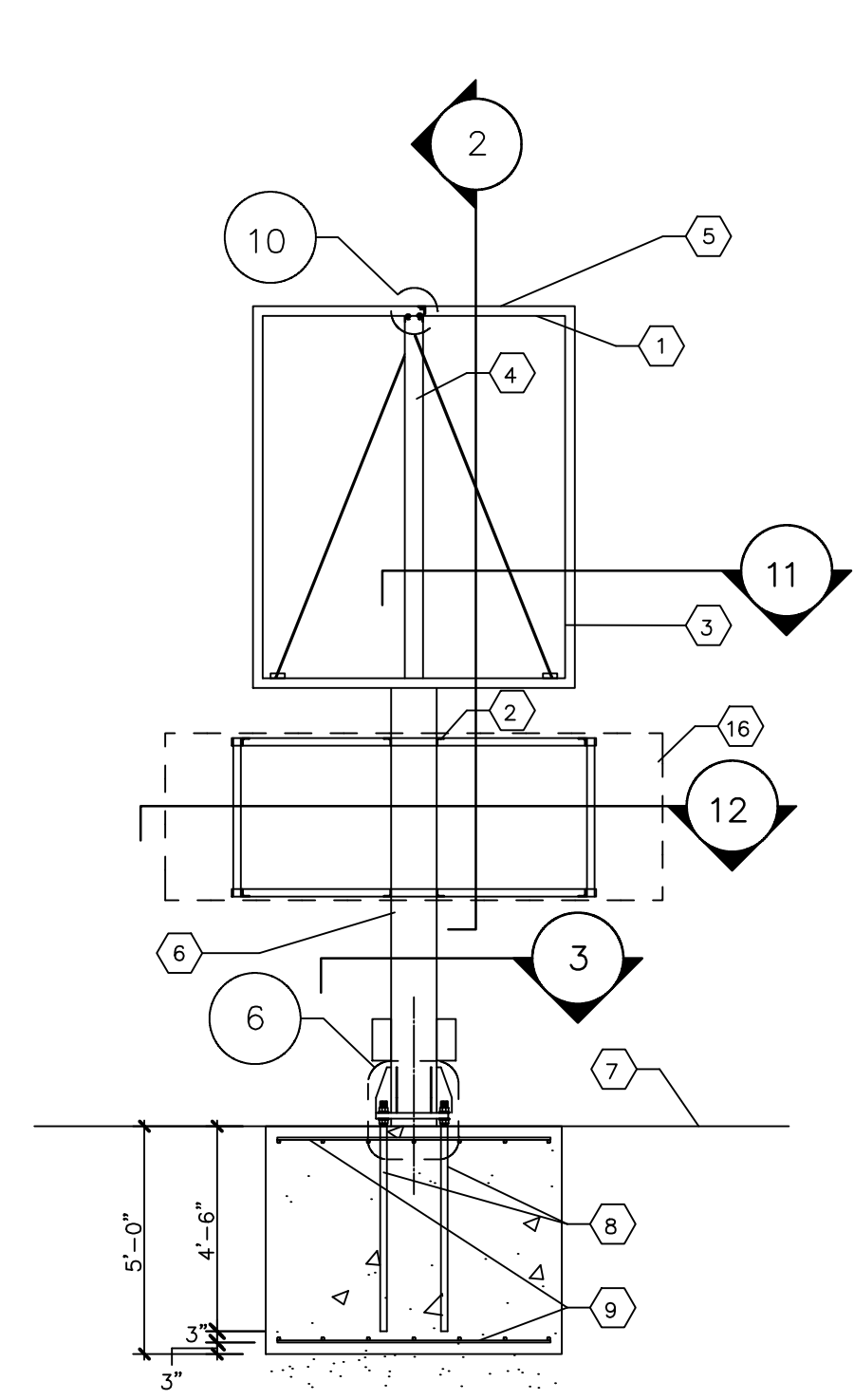
NO.	DATE	BY	DESCRIPTION	CONST
REVISIONS				
CERTIFICATION AND SEAL				
I HEREBY CERTIFY THAT THIS PLAN AND SPECIFICATION WAS PREPARED BY ME OR UNDER MY DIRECT SUPERVISION AND THAT I AM A DULY REGISTERED ARCHITECT OR ENGINEER UNDER THE LAWS OF THE STATE OF MAINE AS SIGNIFIED BY MY HAND AND SEAL.				

**FISCAL 2007 CRITERIA - STORE #12326**

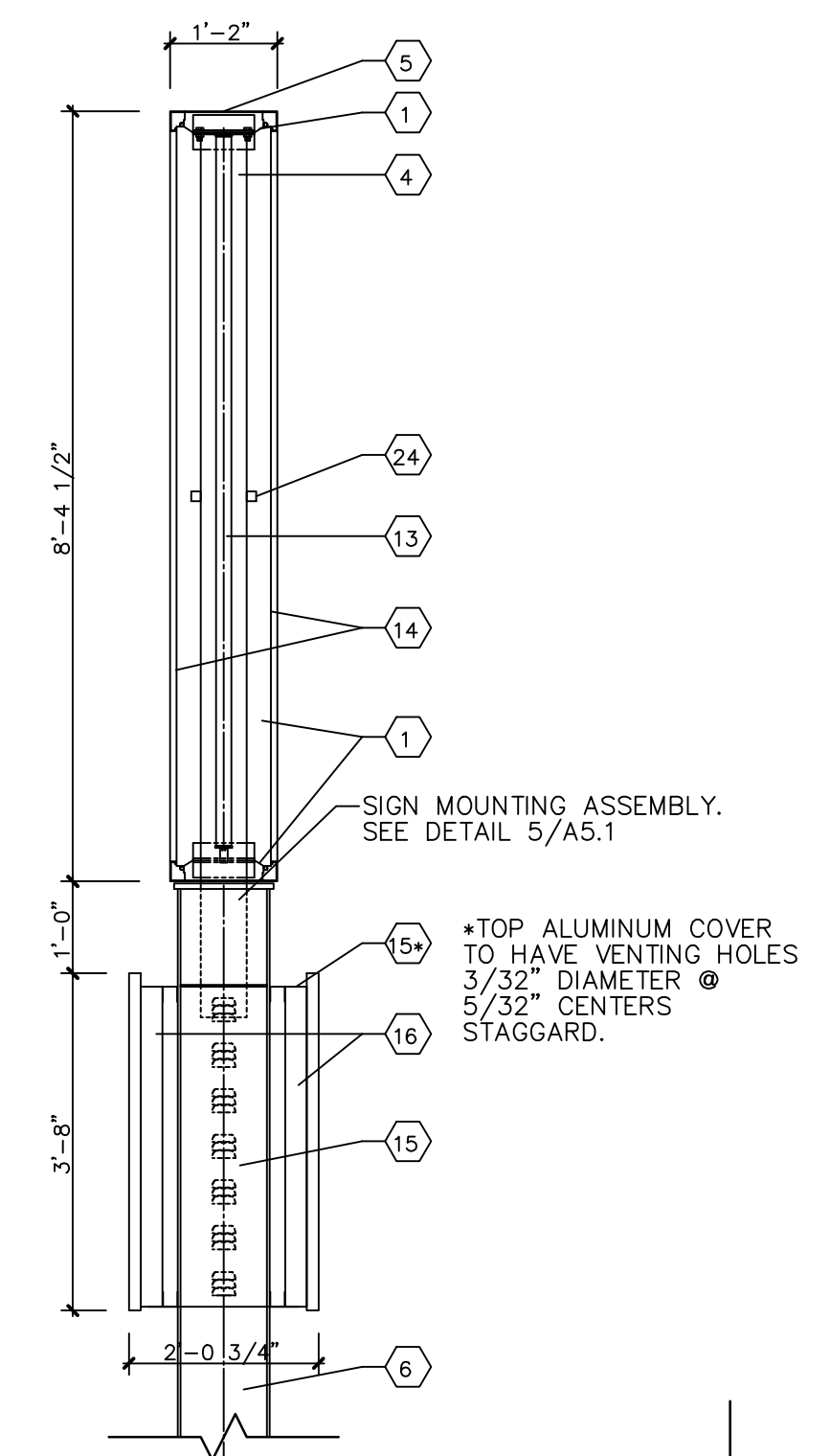
WALGREENS  
(NWC) WASHINGTON & ALLEN AVES.  
PORTLAND, MAINE

DRAWING TITLE  
**READER BOARD PYLON SIGN**

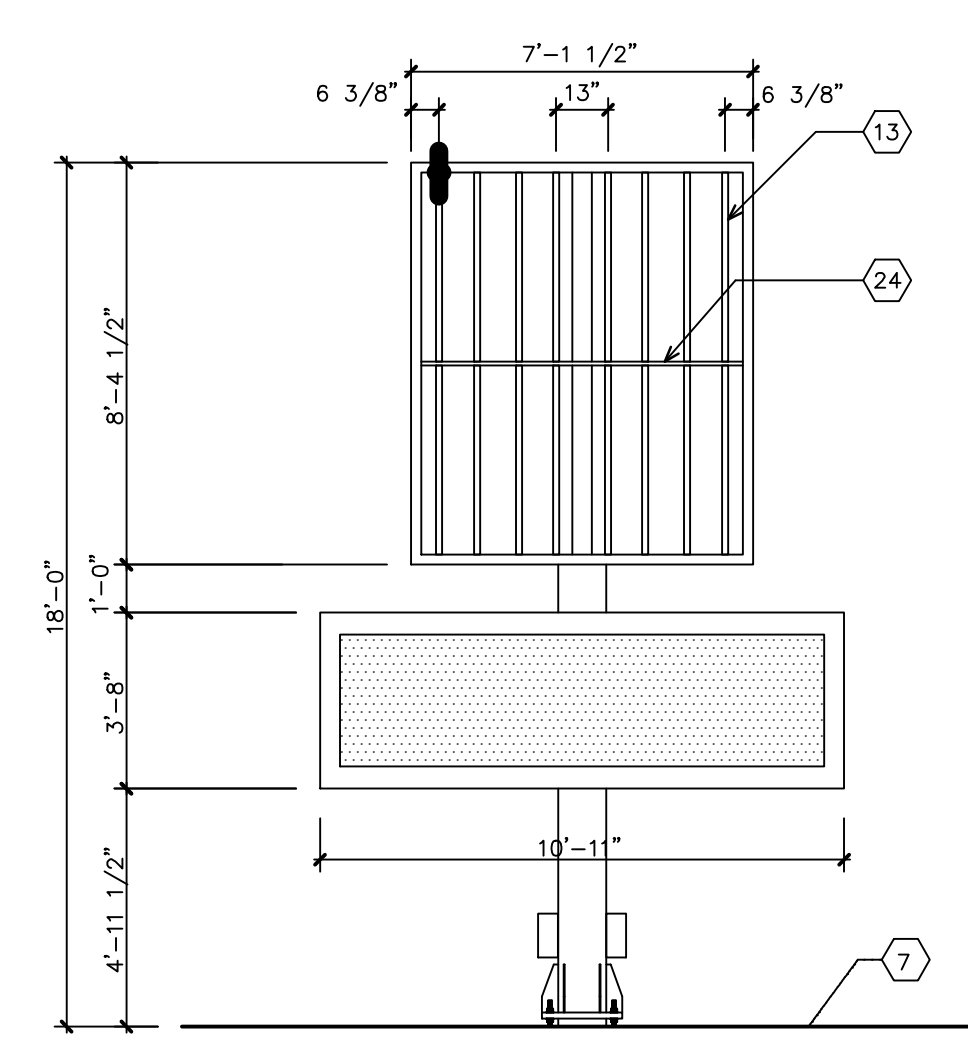
CADD PLOT:	SCALE: AS NOTED	DRAWING NO.
VOID PLOT:	DRAWN BY: TD	<b>A5.1</b>
RELEASED TO CONSTRUCTION	DATE: 3-28-09	
	REVIEWED BY: SAM	



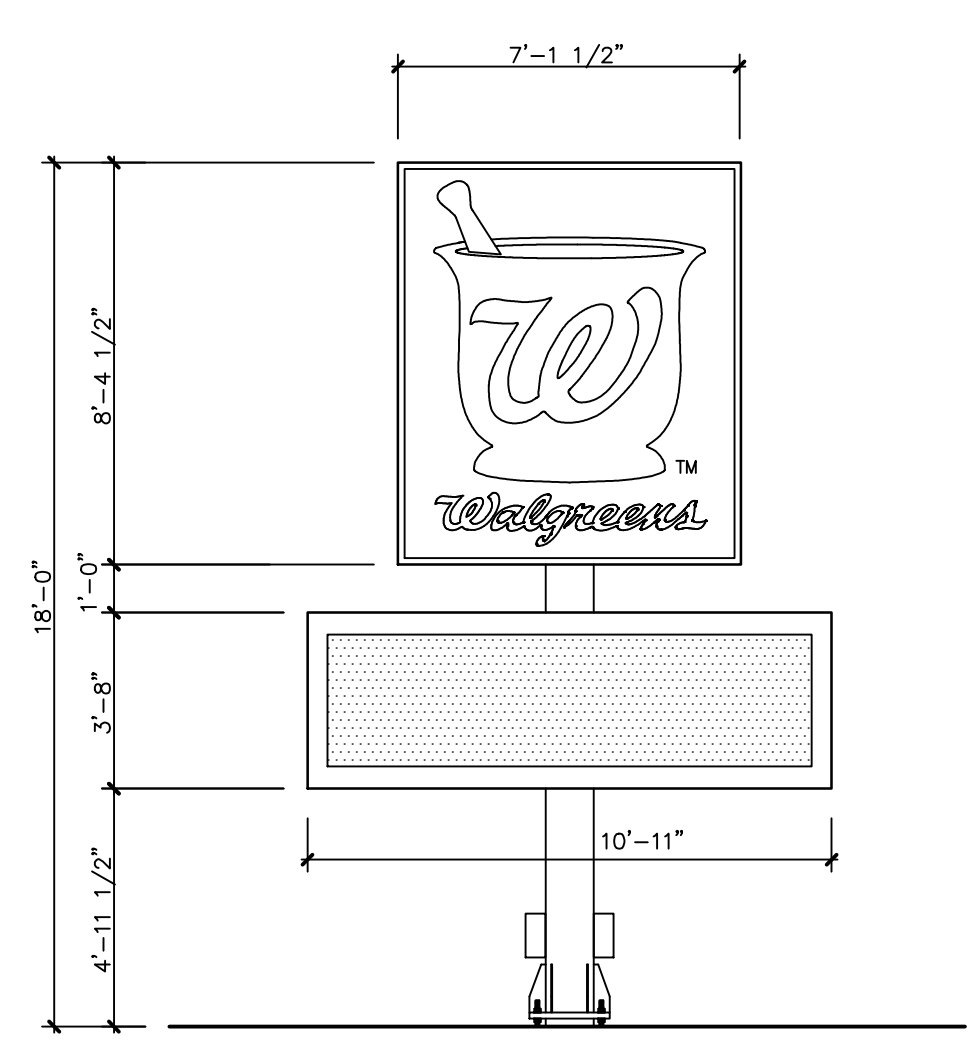
**1 ELEVATION**  
1/4" = 1'-0"



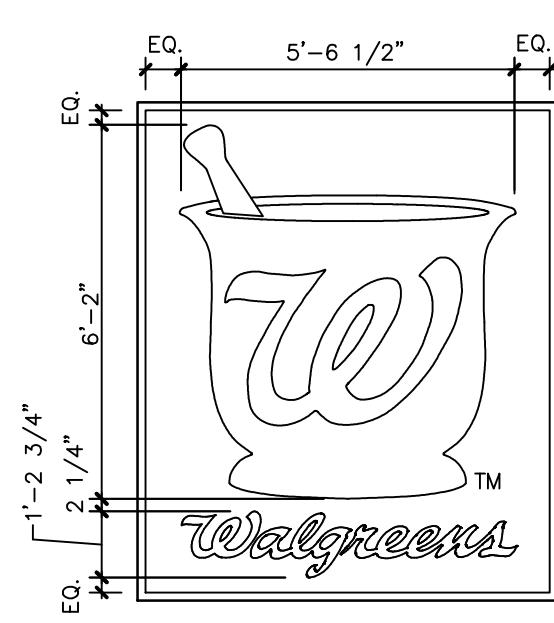
**2 SECTION**  
1/2" = 1'-0"



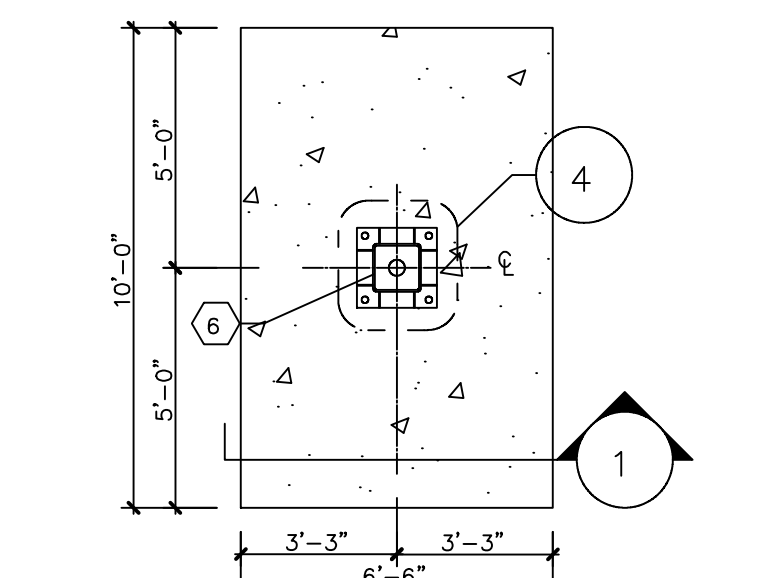
**8 ELEVATION SIGN LIGHTING**  
1/4" = 1'-0"



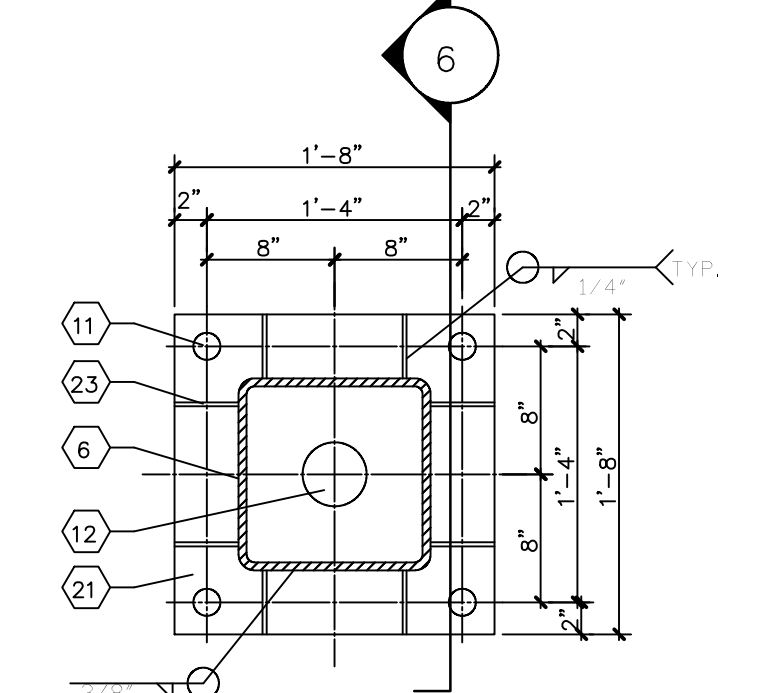
**9 ELEVATION**



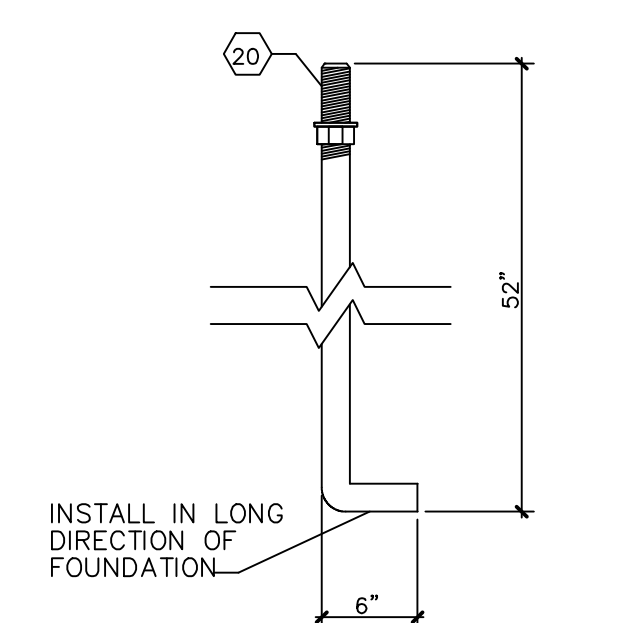
**14 CABINET ELEVATION**  
N.T.S.



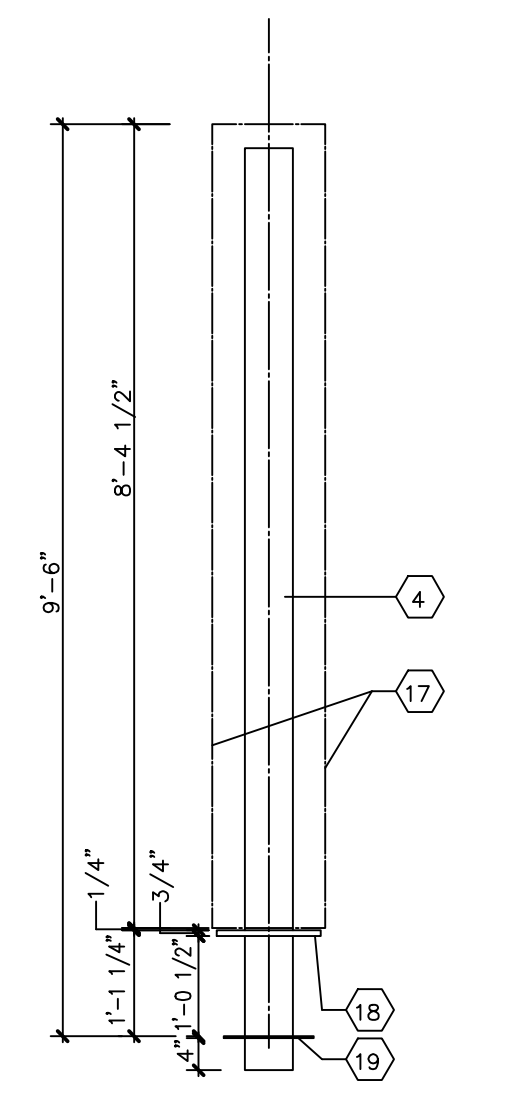
**3 FOUNDATION PLAN/SECTION**  
1/4" = 1'-0"



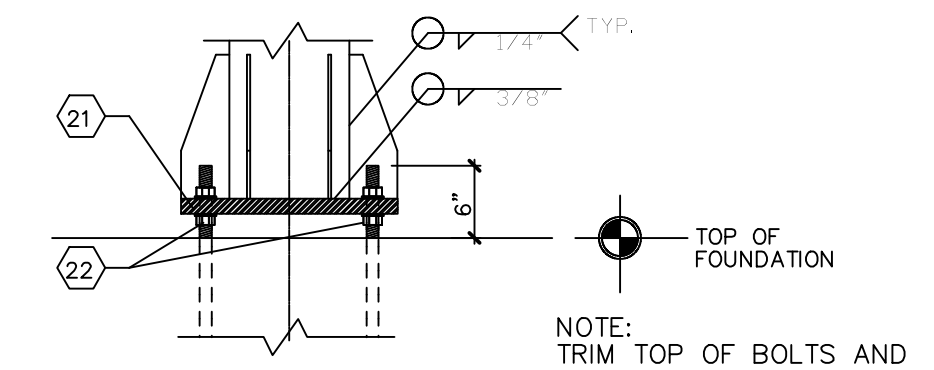
**4 PLAN SECTION**  
1" = 1'-0"



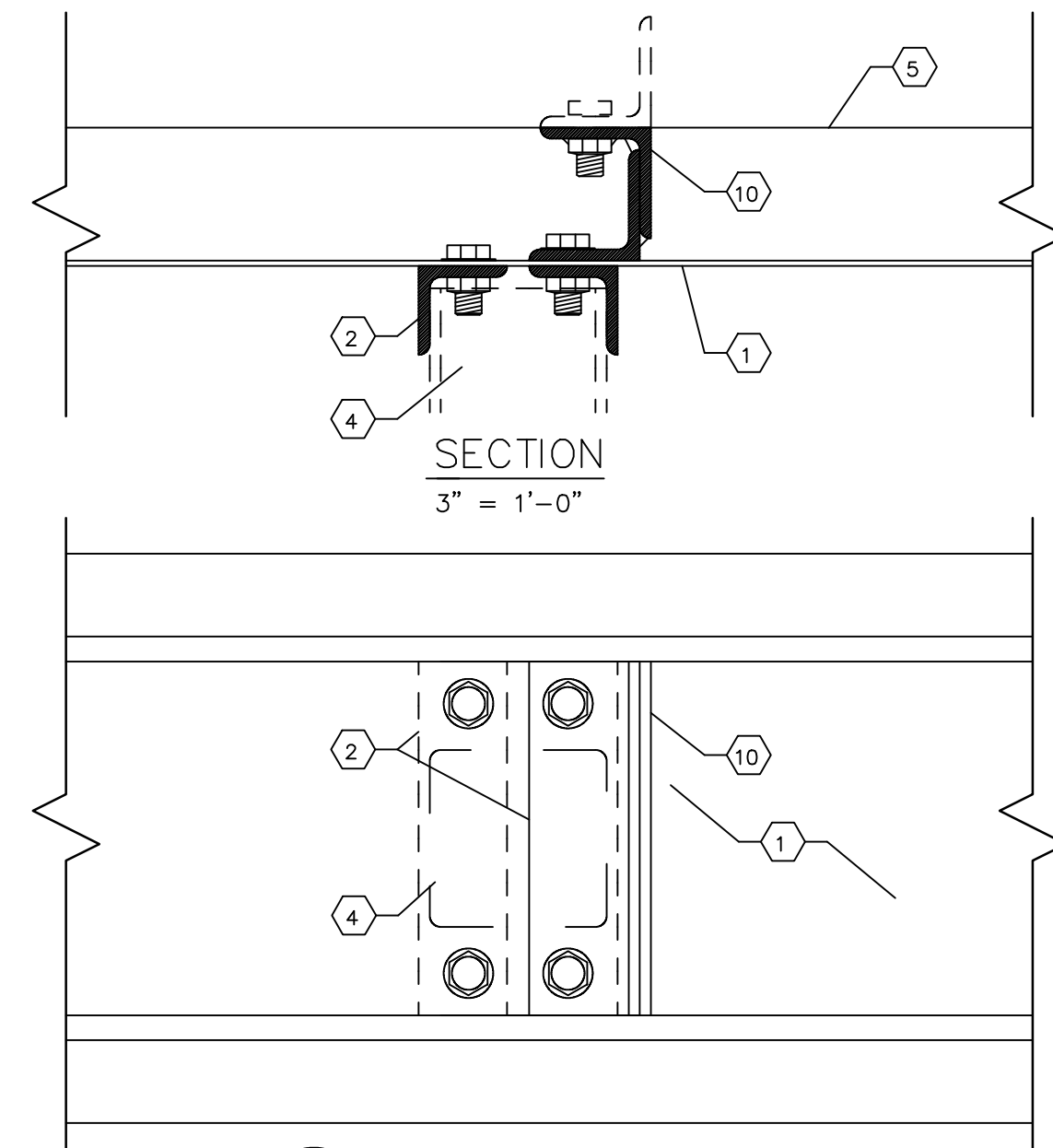
**7 ANCHOR BOLT DETAIL**  
1" = 1'-0"



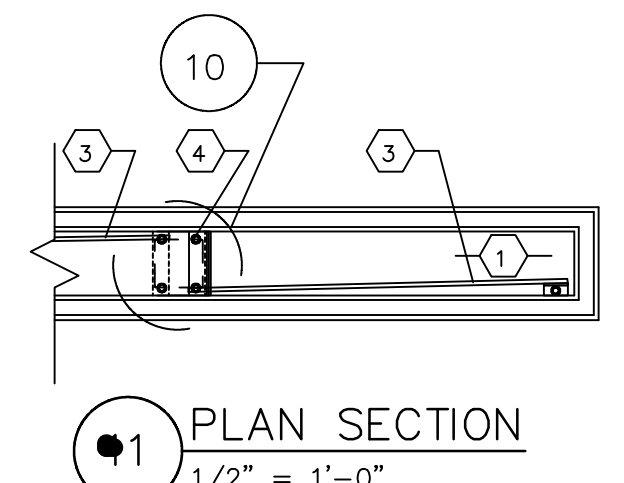
**5 SECTION DETAIL**  
1/2" = 1'-0"



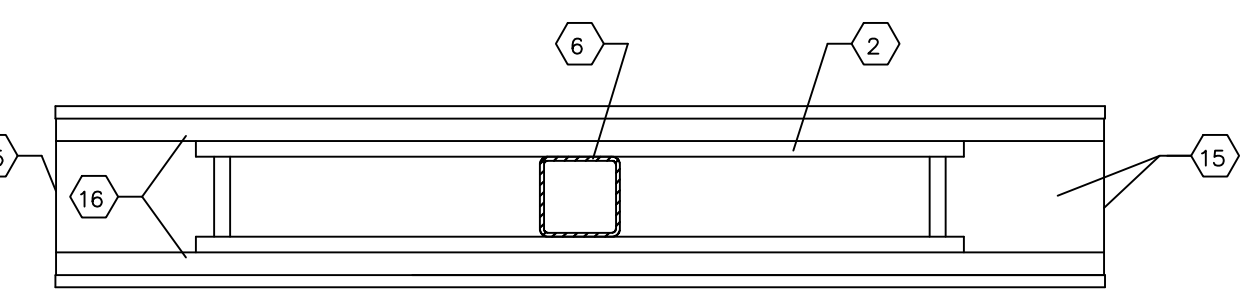
**6 SECTION DETAIL**  
3/4" = 1'-0"



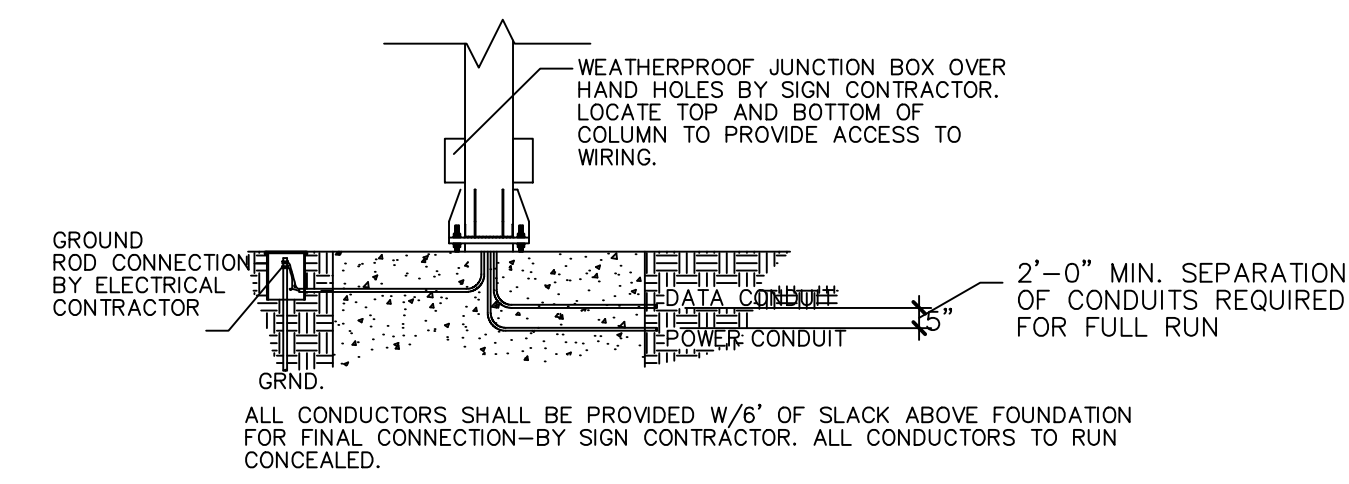
**10 TOP VIEW DETAIL**  
3" = 1'-0"



**11 PLAN SECTION**  
1/2" = 1'-0"



**12 PLAN SECTION**  
1/2" = 1'-0"



**13 CONDUIT ENTRY DETAIL**  
SEE ELECT. FOR ADDITIONAL DETAILS.

KEYED NOTES	
1	EXTRUDED ALUMINUM FRAME.
2	ANGLE 2" X 2" X 1/4".
3	3/8" DIAMETER SAG ROD.
4	6" X 6" TUBE POST.
5	PRECOATED ALUMINUM SHEET METAL COVER.
6	12" X 12" X 1/2" STEEL TUBE COLUMN.
7	TOP OF FOUNDATION (AT TOP OF STREET CURB HEIGHT, MIN).
8	(4) 1 3/4" DIAMETER ANCHOR BOLTS WITH 3/8" STEEL WASHERS (TYP) SEE DETAIL 7/A5.1.
9	#6 BARS TOP AND BOTTOM 12" O.C. EACH WAY (TYPICAL).
10	ANGLE 2 1/2" X 2 1/2" X 1/4".
11	1 15/16" ROUND HOLE FOR 1 3/4" DIAMETER ANCHOR BOLTS. (4) WITH 3/8" STEEL WASHERS.
12	4" ROUND HOLE FOR ELECTRICAL CONDUIT.
13	(8 QUANTITY) "VOLT-ARC" F120/T12/CW/HO FLUORESCENT LAMPS WITH "ADVANCE" COLD WEATHER BALLAST.
14	SIGN FACE.
15	BREATHER PANEL (COVER).
16	LED READER BOARD PANELS MOUNTED ON EACH SIDE OF THE PYLON.
17	PRIMARY SIGN PANEL.
18	13" X 13" X 3/4" CAP PLATE.
19	3/8" X 11" DIA. STEEL PLATE W/6 1/4" X 6 1/4" OPENING.
20	6" THREADED END.
21	20" X 20" X 1 3/4" STEEL BASE PLATE.
22	LEVELING NUTS AND WASHERS.
23	(8) 1/2" X 4" X 12" STEEL GUSSET PLATES.
24	1 1/4" X 1 1/4" STEEL TUBE.

COLORS	
STRUCTURE	CABINETS/RETAINERS: PFM DARK BRONZE COLUMNS: DARK BRONZE
FACES	PRIMARY PANEL: 3M PANAFLEX SIGN FACE WITH #3630-53 "CARDINAL RED" BACKGROUND, SCRIPT 'W' AND INNER SURFACE OF MORTAR. OUTER SURFACES OF MORTAR & PESTLE AND SCRIPT 'WALGREENS' COPY TO BE WHITE.  THE MORTAR AND PESTLE SYMBOL: 7'-8 1/4" OVERALL SYMBOL HEIGHT AND 6'-11" OVERALL SYMBOL WIDTH.  "WALGREENS" EXTENDED SCRIPT COPY: 1'-1 3/4" CAPITAL AND 8" LOWER CASE LETTER HEIGHTS. 1'-6 1/2" OVERALL COPY HEIGHT, 6'-11" OVERALL COPY LENGTH.  LED READERBOARD PANEL OPTIONS: ■ 3'-8" X 10'-11" (PREFERRED OPTION): TWO SINGLE-FACED DISPLAYS WITH RED LED PIXELS. THE 3'-8" CABINET HEIGHT ALLOWS THREE TO SIX LINES OF COPY. HIGH RESOLUTION (APPROXIMATELY .71) WITH SHADING. ■ 2'-8" X 8'-8" (ALTERNATE OPTION): TWO SINGLE-FACED DISPLAYS WITH RED LED PIXELS. THE 3'-8" CABINET HEIGHT ALLOWS FOR TWO TO FOUR LINES OF COPY. HIGH RESOLUTION (APPROXIMATELY .71) WITH SHADING.

STRUCTURAL GENERAL NOTES

1) ALL ALUMINUM SURFACES IN CONTACT WITH STEEL SHALL RECEIVE ONE COAT OF BITUMASTIC PAINT.  
2) ALL STRUCTURAL STEEL SHALL BE ASTM A-36.  
3) ALL STRUCTURAL STEEL SHALL COMPLY WITH THE AISC MANUAL, LATEST EDITION.  
4) ALL STEEL SHALL RECEIVE ONE SHOP COAT OF RUST INHIBITIVE PAINT.

5) TOTAL SIGN WEIGHT = 2300 LB. (INCLUDING ALL STRUCTURAL SUPPORT MEMBERS).  
6) DESIGN WIND PRESSURE = 30 LB./SQ. FT.  
7) MINIMUM CONCRETE STRENGTH TO BE 3000 P.S.I.  
8) REINFORCEMENT STEEL TO BE ASTM A-615 GR. 60.  
9) ALLOWABLE SOIL PRESSURE 2500 P.S.F.  
10) SIGN AND FOUNDATION MUST CONFORM TO LOCAL BUILDING CODES, WIND AND SOIL REQUIREMENTS.