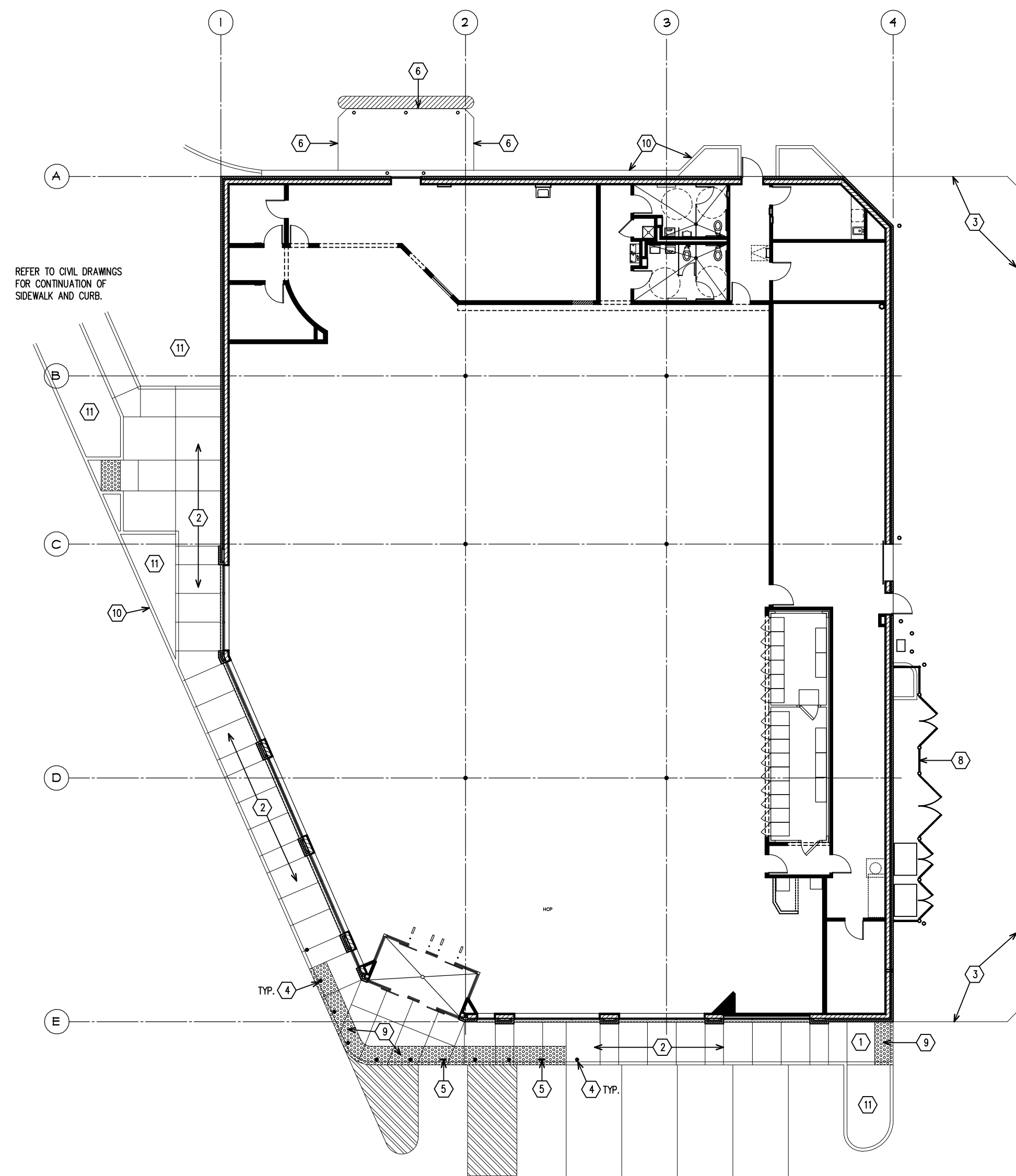


CONCRETE SIDEWALKS & PADS ADJACENT TO BUILDING



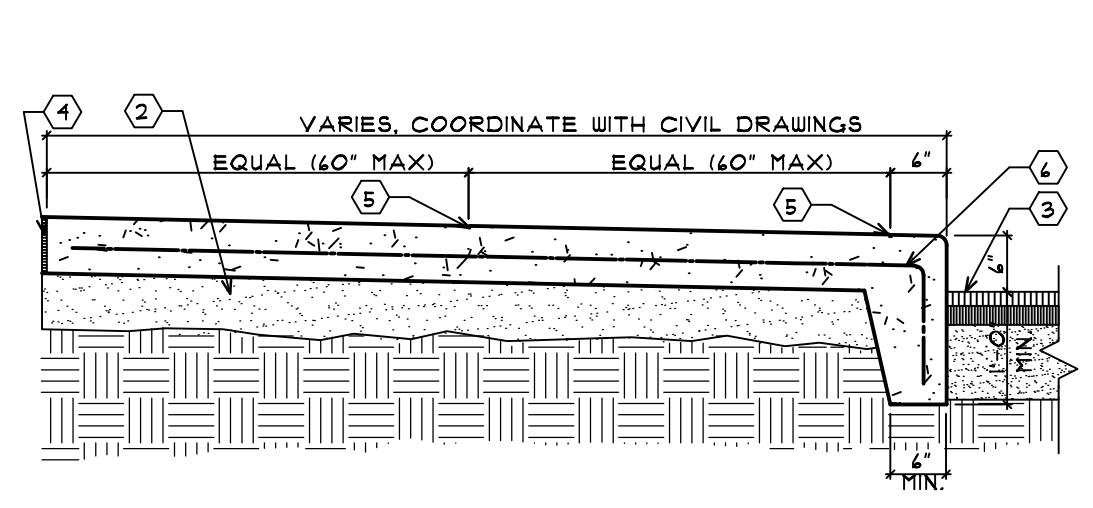
**SIDEWALK & CURB NOTE:**  
REFER TO CIVIL DRAWINGS FOR DIMENSIONS AND DETAILS ( TYP. )

**NOTE:**  
ASPHALT PAVING AT ACCESSIBLE PARKING STALLS AND ACCESS AISLES IS FLUSH WITH CONCRETE SIDEWALK. PAVING SHALL SLOPE 1:50 MAX. AWAY FROM SIDE WALK AT THESE AREAS. PAVING SHALL SLOPE 1:20 MAX. ALONG CURB AWAY FROM THESE AREAS. REFER TO CIVIL DRAWINGS.

KEYED NOTES

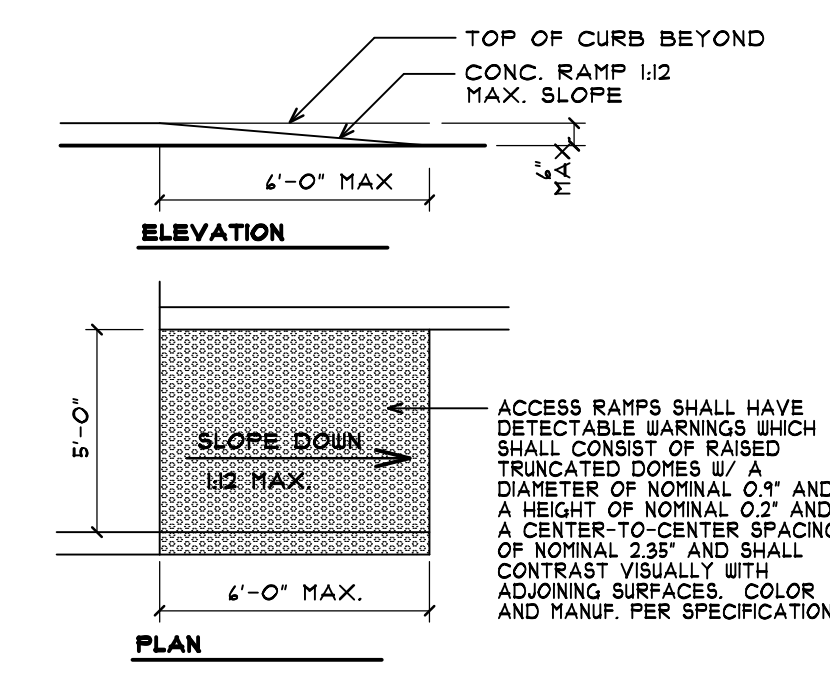
- 1 ACCESSIBLE RAMP REFER TO CIVIL DRAWINGS FOR DIMENSIONS AND DETAILS.
- 2 CONCRETE WALK WITH TOOLED CONTROL JOINTS (5'-0" MAX.) AND BROOM FINISH. REFER TO CIVIL DRAWINGS FOR DIMENSIONS AND DETAILS.
- 3 CONCRETE RECEIVING PAD. REFER TO SHEET A2.5 FOR ADDITIONAL INFORMATION.
- 4 PIPE BUMPER GUARDS. REFER TO CIVIL DRAWINGS FOR DETAIL.
- 5 HANDICAP SIGNAGE. REFER TO CIVIL DRAWINGS FOR DETAILS.
- 6 CONCRETE PAD 6" BELOW FINISHED FLOOR. SLOPE ADJACENT PAVEMENT TO MEET CONCRETE. REFER TO SHEET A4.4 FOR ADDITIONAL INFORMATION.
- 7 COMPACTOR ENCLOSURE—REFER TO SHEET A2.5 FOR DIMENSIONS AND DETAILS—
- 8 TOTE, BALE, DUMPSTER ENCLOSURE. REFER TO SHEET A2.5 FOR DIMENSIONS AND DETAILS.
- 9 CONTINUOUS 3/4" WIDE TACTILE SURFACE ALONG SIDEWALK IN FRONT OF ACCESSIBLE PARKING STALLS AND ACCESS AISLES. REFER TO CIVIL DRAWINGS FOR DETAILS.
- 10 CONCRETE CURB. REFER TO SHEET A4.4 FOR ADDITIONAL INFORMATION.
- 11 LANDSCAPE AREA. REFER TO CIVIL DRAWINGS FOR ADDITIONAL INFORMATION.

**6 PLAN - CONCRETE SIDEWALK & PADS**  
SCALE: N.T.S.



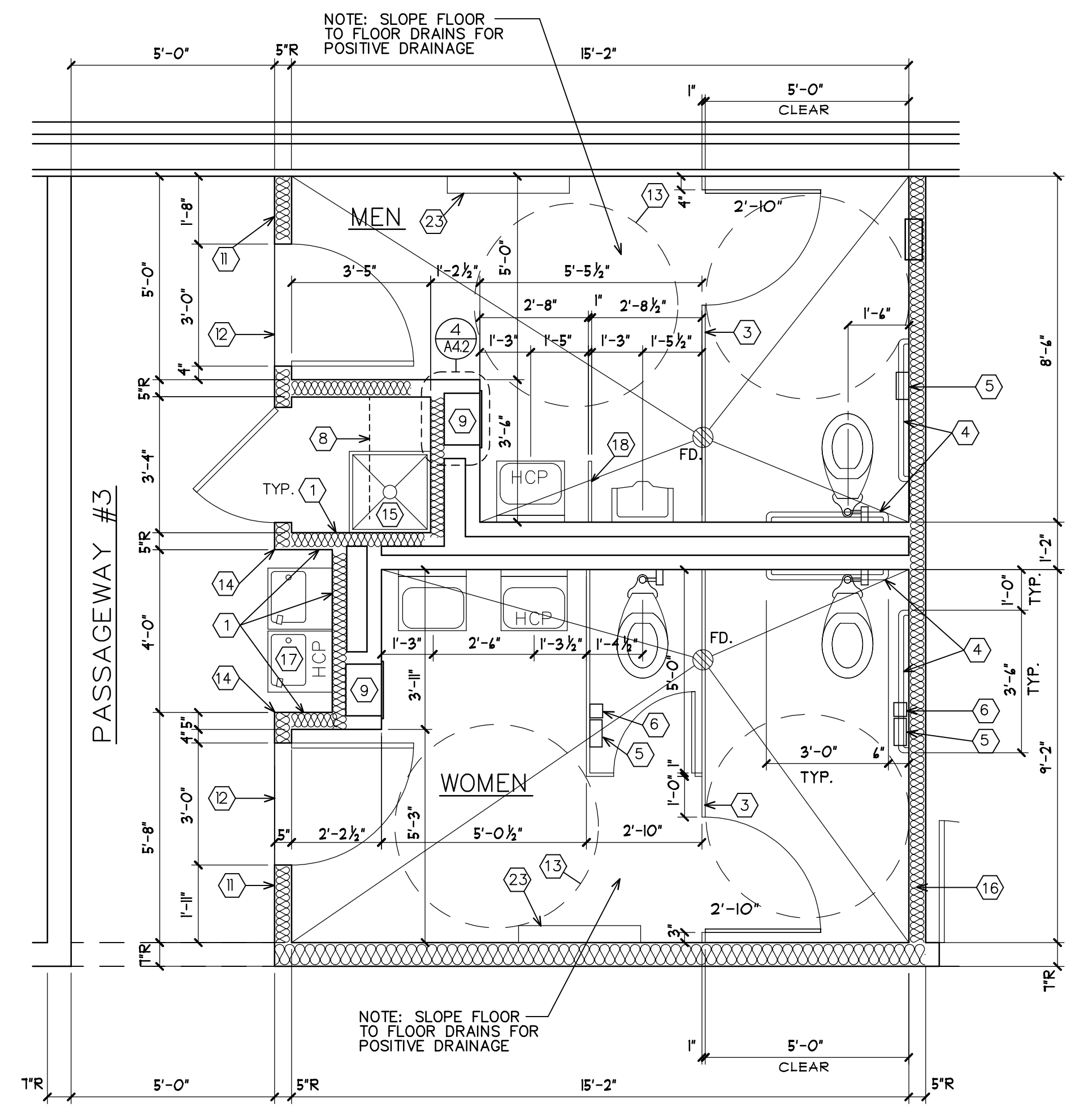
- KEYED NOTES**
- 1 N/A
  - 2 4" COMPACTED AGGREGATE BASE WITH FILLER.
  - 3 PAVEMENT.
  - 4 COMPRESSIBLE FILLER (3/4" MAXIMUM), CUT BACK AND PROVIDE SEALANT TYPICAL AT ALL JOINTS
  - 5 1/4" TOOLED JOINT
  - 6 4" X 4" #10 W.W.F.

**SIDEWALK DETAIL AT BUILDING**  
SCALE: N.T.S.



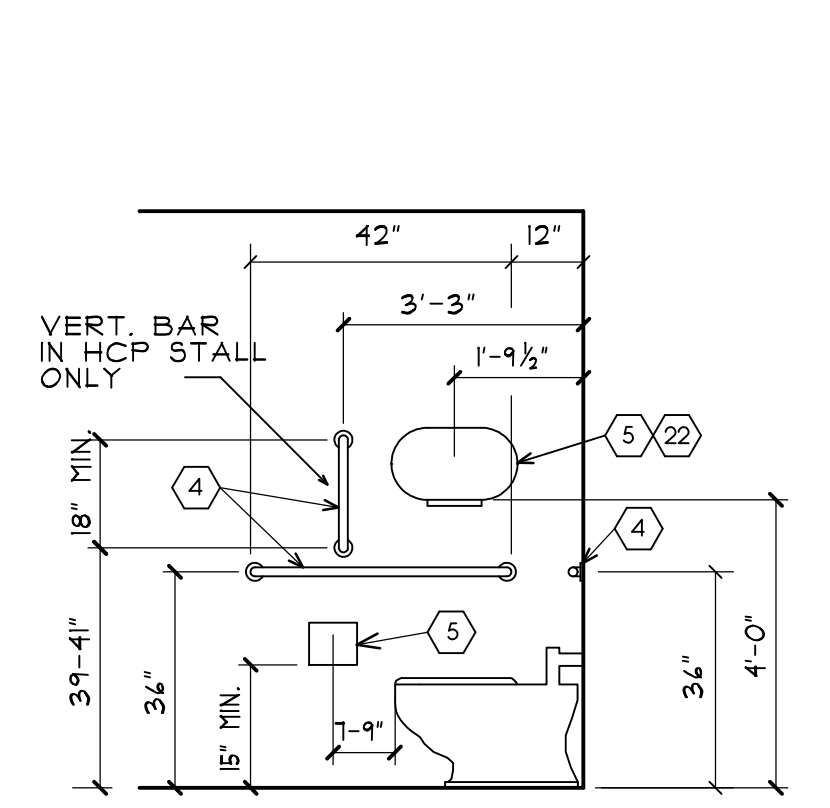
**ACCESSIBLE RAMP DETAIL AT BUILDING**  
SCALE: N.T.S.

TOILET ROOM DETAILS

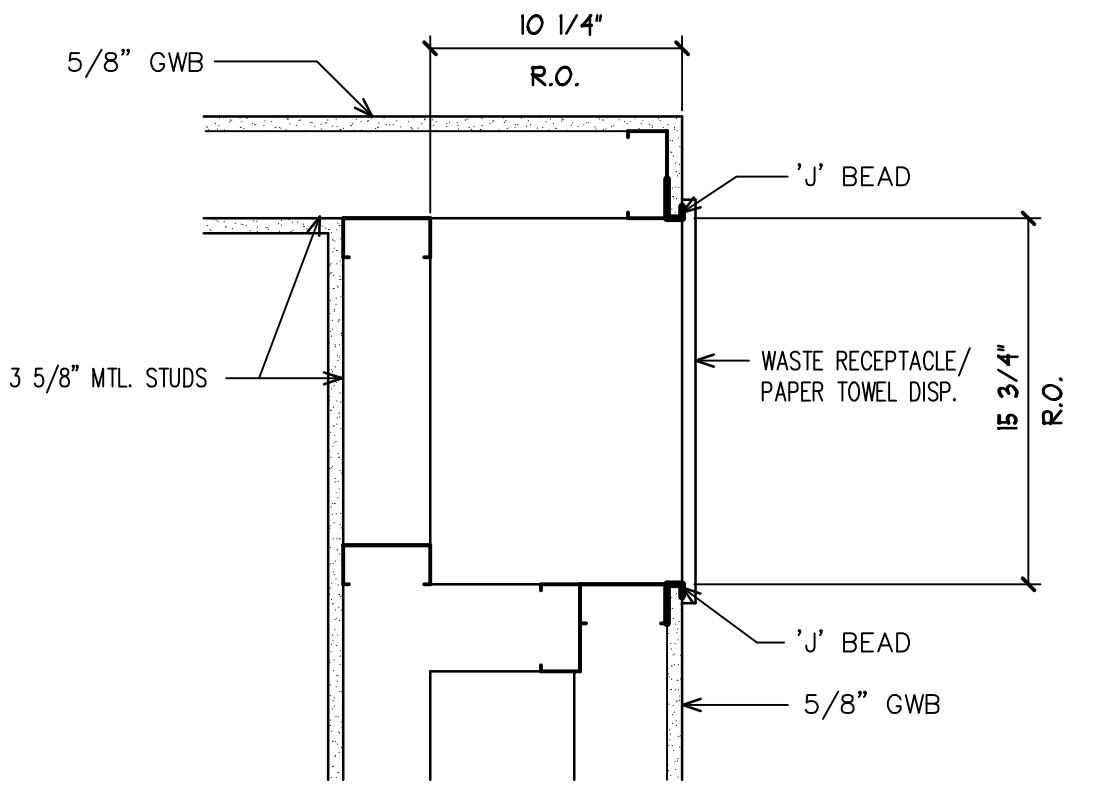


**1 PLAN - TOILET ROOMS**  
SCALE: 3/8"=1'-0"

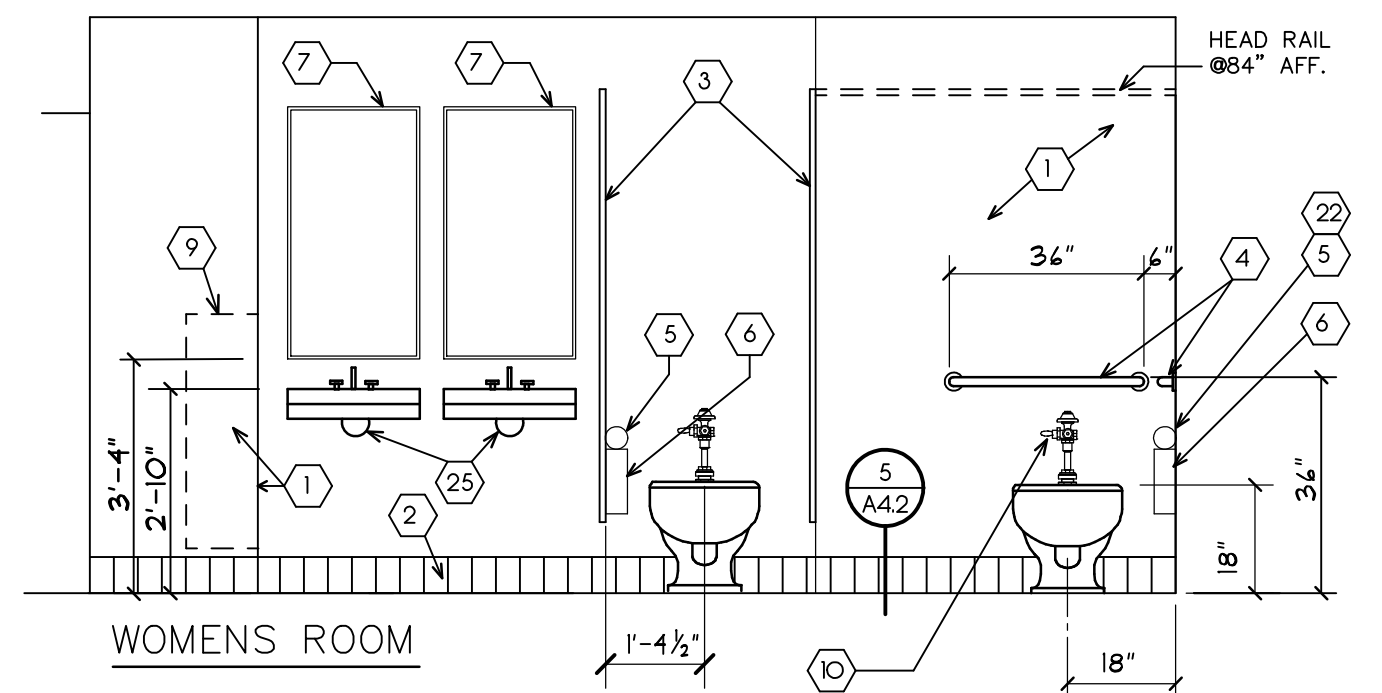
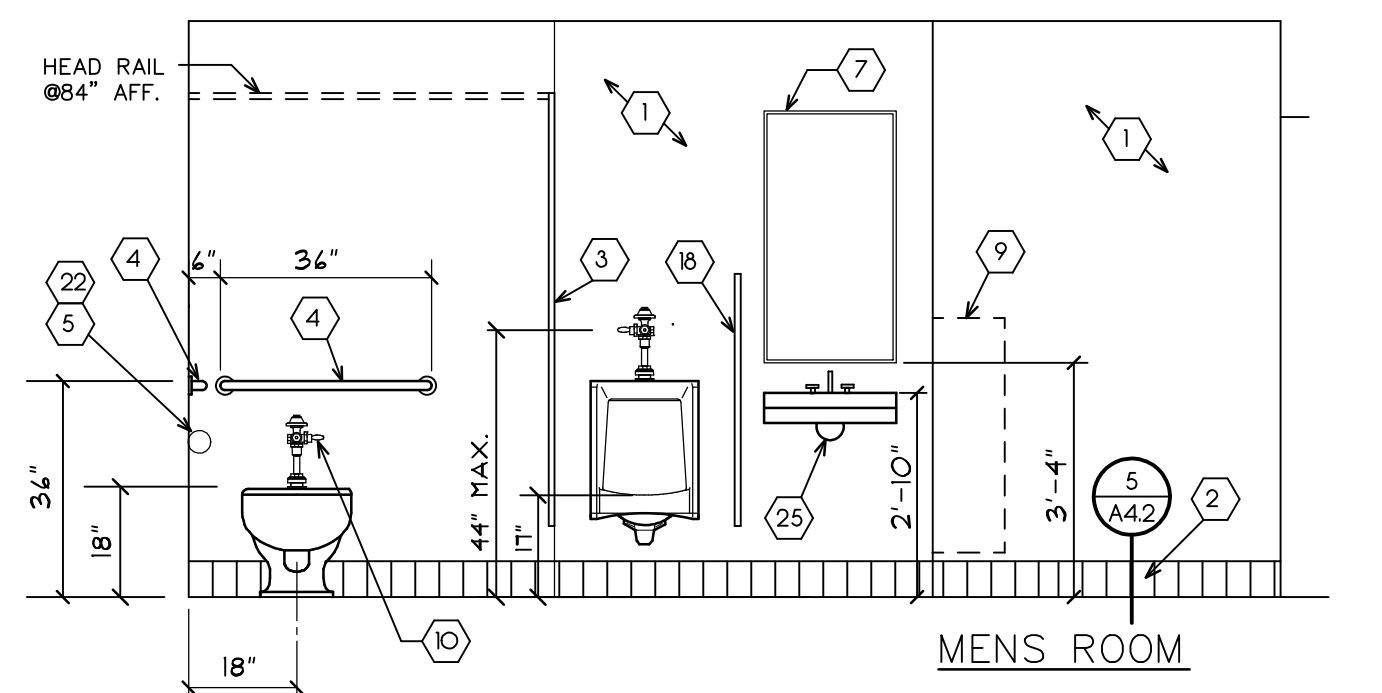
- TOILET STALL DOOR NOTES:**
1. PROVIDE PULL HANDLE 6" FROM HINGE SIDE OF DOOR ON THE COMPARTMENT SIDE OF DOOR AT 26" TO 36" A.F.F. ( TYP. FOR HCP STALL ).
  2. PROVIDE PULL HANDLES ON BOTH SIDES OF DOOR AT THE LATCH SIDE ( TYP. FOR HCP STALL ).



**3 TYP. SIDE ELEV.**  
SCALE: 3/8"=1'-0"



**4 DETAIL**  
SCALE: 1 1/2"=1'-0"

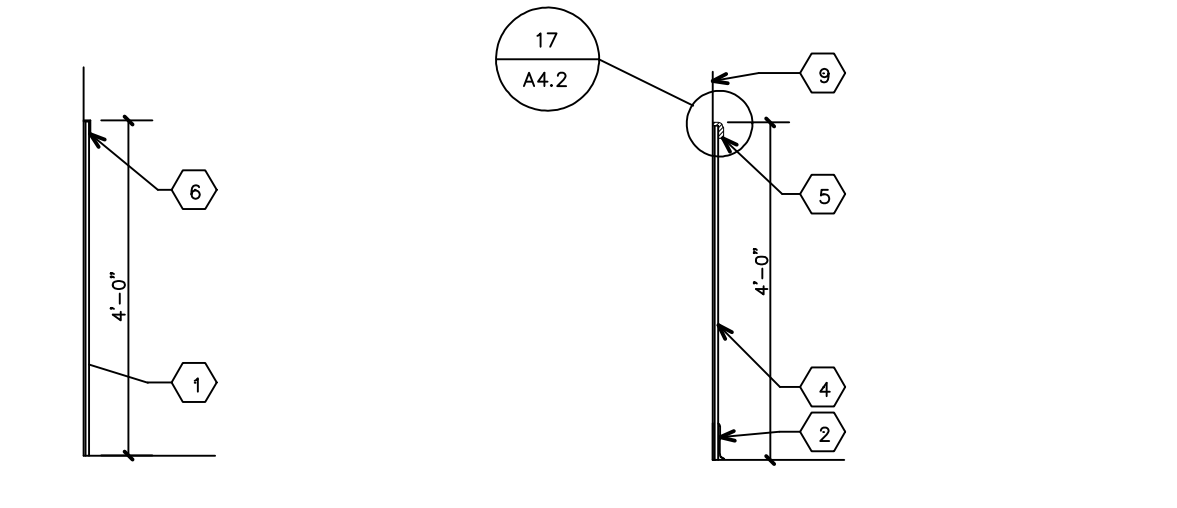


**2 INTERIOR ELEVATIONS-MEN/WOMEN**  
SCALE: 3/8"=1'-0"

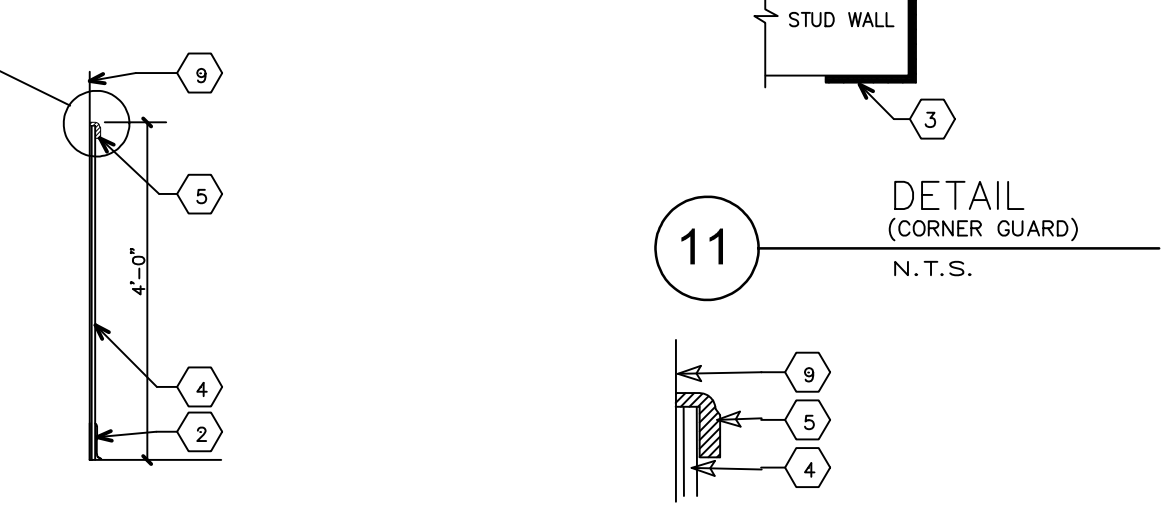
KEYED NOTES AND ACCESSORY DATA

- 1 FIBERGLASS POLYESTER PANELS.
- 2 CERAMIC TILE COVE BASE TO TOP OF TILE BASE. BUTT INSTALL TO FLOOR TILE, DO NOT INSTALL ON TOP OF FLOOR TILE.
- 3 OVERHEAD BRACED TOILET STALL PARTITION.
- 4 GRAB BARS IN EACH TOILET ROOM. MOUNT 3'-0" A.F.F.
- 5 TOILET TISSUE DISPENSER. FURNISHED AND INSTALLED BY WALGREENS.
- 6 FEMINE NAPKIN DISPOSAL. MOUNT TOP AT 2'-0" A.F.F.
- 7 MIRROR (AT EACH LAVATORY) MOUNT BOTTOM AT 3'-4" A.F.F.
- 8 12" DEEP PLASTIC COATED WIRE SHELVING AT 60" & 72" A.F.F.
- 9 RECESSED ROLL PAPER TOWEL DISPENSER AND WASTE RECEPTACLE ROUGH OPENING 15 3/4" X 39 1/2" X 10 1/4" DEEP TOP OF R.O. 50" AFF. DISPENSER MODEL # 2277 BY BRADLEY.
- 10 FLUSH LEVER TO BE IN OPEN SIDE OF STALL PER ADA.
- 11 ADA ACCESSIBLE TOILET RM. NAME PLATE ON WALL.
- 12 CERAMIC TILE BULLNOSE TRIM. SEE DETAIL - 12/A4.5
- 13 5'-0" DIAMETER WHEEL CHAIR SPACE ALLOWANCE.
- 14 CORNER GUARD. SEE DETAIL 11/A4.2
- 15 MOP BASIN.
- 16 SOUND ATTENUATION BLANKETS. FULL HEIGHT LENGTH AND 25' OF WALL.
- 17 ELECTRIC WATER COOLER.
- 18 URINAL SCREEN
- 19 NOT USED
- 20 SEALANT
- 21 CERAMIC TILE FLOOR
- 22 PROVIDE TREATED WOOD BLOCKING UNDER WR. GWB. BEHIND RESTROOM WALL FIXTURE ATTACHMENT POINTS. USE 24" L X 12" H FIELD OF BLOCKING UNDER GWB BEHIND LARGE TISSUE DISPENSER.
- 23 BABY CHANGING STATION. OPEN BED HEIGHT AT 33" A.F.F. FOLLOW MANUFACTURER'S STUD SPACING AND ANCHORING TO MEET OR EXCEED DESIGN LOAD CAPACITY.
- 24 NOT USED
- 25 PIPE PADDING

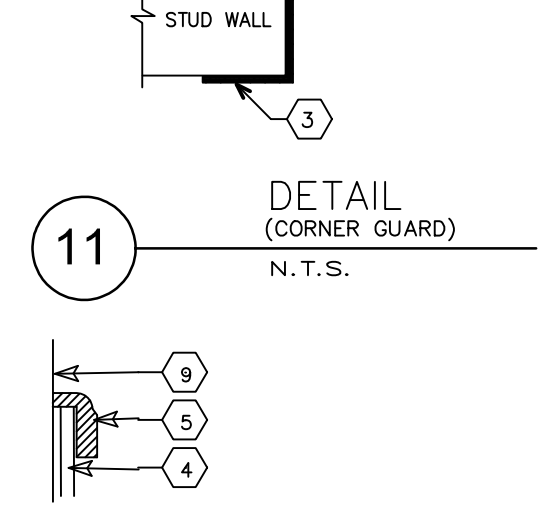
CORNER GUARD AND PROTECTED WALL DETAILS



**9 WALL SECTION**  
(AT PASSAGES W/ CART TRAFFIC)  
N.T.S.



**10 WALL SECTION**  
(AT EMPLOYEE ROOM)  
N.T.S.



**11 DETAIL (CORNER GUARD)**  
N.T.S.

KEYED NOTES

- 1 1/4" TEMPERED MASONITE. (DO NOT PAINT)
- 2 6" VINYL BASE.
- 3 3-1/2" X 3-1/2" X 48" HIGH PREFAB CORNER GUARD TO BE 16 GAUGE TYPE 430 STAINLESS STEEL WITH ROUNDED CORNERS AS MANUFACTURED BY TUBULAR SPECIALTIES INC. OR EQUAL. USE MANUFACTURER'S ADHESIVE 3548X.
- 4 PANELING: 8" X 8" GRID PATTERN, TONGUE AND GROOVE CONNECTION
- 5 STANDARD PANEL 'J' CAP MOLDING AS MANUFACTURED MARLITE.
- 6 J-BEAD CAP OVER MASONITE.
- 7 N/A
- 8 N/A
- 9 VINYL WALL COVERING.

**12 DETAIL (TOP TRIM & PANELING)**  
N.T.S.

**MOESER & ASSOCIATES**  
206 AYER ROAD HARVARD, MA 01834-5605  
**ARCHITECT**

DRAWINGS/SPECIFICATIONS BY:

- WALGREENS'
- LANDLORD'S CONSULTANT

ALL CONSTRUCTION WORK, UNLESS NOTED OTHERWISE, BY:

- WALGREENS' CONTRACTOR
- LANDLORD'S CONTRACTOR (TURNKEY CONSTRUCTION)

STORE	BUILDING
NEW . . . . . <input checked="" type="checkbox"/>	NEW . . . . . <input checked="" type="checkbox"/>
REMODELING . . . . . <input type="checkbox"/>	EXISTING . . . . . <input type="checkbox"/>
RELOCATION . . . . . <input type="checkbox"/>	NEW SHELL ONLY . . . . . <input type="checkbox"/>
OTHERS . . . . . <input type="checkbox"/>	

NO.	DATE	BY	DESCRIPTION	CONST

REVISIONS

CERTIFICATION AND SEAL

I HEREBY CERTIFY THAT THIS PLAN AND SPECIFICATION WAS PREPARED BY ME OR UNDER MY DIRECT SUPERVISION AND THAT I AM A DULY REGISTERED ARCHITECT OR ENGINEER UNDER THE LAWS OF THE STATE OF MAINE AS SIGNIFIED BY MY HAND AND SEAL.

FISCAL 2007 CRITERIA - STORE #12326

WALGREENS  
(NWC) WASHINGTON & ALLEN AVES.  
PORTLAND, MAINE

STANDARD DETAILS AND SPECIFICATIONS

CADD PLOT:	SCALE: AS NOTED	DRAWING NO.
VOID PLOT:	DRAWN BY: TD	<b>A4.2</b>
RELEASED TO CONSTRUCTION	DATE: 3-26-09	
	REVIEWED BY: SAM	