

DRAWINGS/SPECIFICATIONS BY:
 WALGREENS'
 LANDLORD'S CONSULTANT

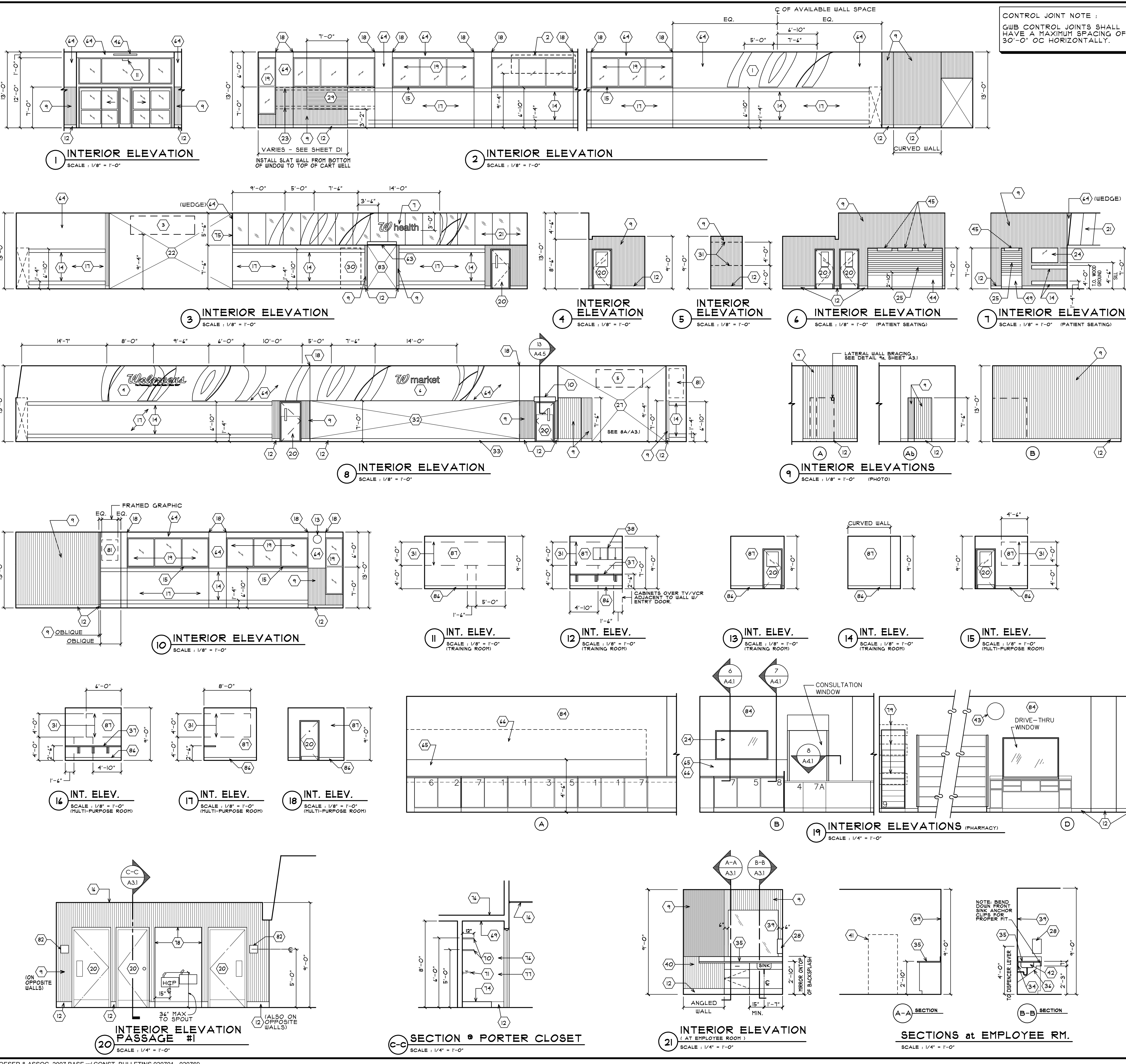
ALL CONSTRUCTION WORK, UNLESS NOTED OTHERWISE, BY:
 WALGREENS' CONTRACTOR
 LANDLORD'S CONTRACTOR (TURNKEY CONSTRUCTION)

STORE	BUILDING
NEW	NEW
REMODELING	EXISTING
RELOCATION	NEW SHELL ONLY
OTHERS	

INTERIOR ELEVATIONS KEYED NOTES (CONTINUED)

DESCRIPTION	
44	CLOSURE WALL BY WALGREENS. SEE DETAIL, SHEET A4.1
45	DROP OFF/PICK UP/PATIENT CONSULTATION SIGN BY WALGREENS.
46	THANK YOU FOR SHOPPING ... WALGREENS (3" H)
47	THRU (62) NOT USED
63	RESTROOM GRAPHIC BY WALGREENS.
64	PAINT BENJAMIN MOORE "WHITE DOVE."
65	2"-0" WIDE PLASTIC LAMINATE (SAME AS WINDOW SILL) OVER GWB FROM BOTTOM OF WINDOW DOWN. SEE PHARMACY DETAIL.
66	3/4" x 48" PLYWOOD BLOCKING BETWEEN STUDS UNDER GWB, FROM 3'-2" TO 7'-2" A.F.F.
67	3 PIECES OF 3/4" x 12" BLOCKING, 2'-4" WIDE, BEHIND GWB, CENTERED @ 36", 59", AND 80" A.F.F. FOR MOUNTING OF SINK CABINETS. SEE D1
68	WATER HEATER ON PLATFORM.
69	5/8" GWB.
70	PLASTIC COATED WIRE SHELVING.
71	WOOD BLOCKING FOR FAUCET SUPPORT. SEE PLUMBING DRAWINGS.
72	GALVANIZED METAL WATER TRAY WITH OVERFLOW TUBE TO FLOOR DRAIN.
73	3/4" GUL LISTED FIRE RETARDANT PLYWOOD SECURED TO UNISTRUT SUPPORT FRAME.
74	MOP BASIN. SEE PLUMBING DRAWINGS.
75	CURTAIN WALL CASED GWB RETURNED AT MIRROR END. PAINT EXPOSED GWB WEDGE.
76	3 5/8" @ 20 GA. METAL STUDS @ 16" O.C.
77	FIBERGLASS POLYESTER PANELS TO UNDERSIDE OF CEILING.
78	FIBERGLASS PANELS TO UNDERSIDE OF OPENING (3 WALLS).
79	3 PIECES OF 3/4" x 12" BLOCKING, 3'-0" WIDE, BEHIND GWB, CENTERED @ 37", 69" AND 90" A.F.F. FOR FASTENING OF 10 DRAWER FILE CABINET TO WALL. SEE D-1.
80	UNISTRUT SUPPORT FRAME. REFER TO DETAIL ON SHEET S-5.
81	FRAMED GRAPHIC
82	ADA TOILET ROOM SIGN
83	OPENING AT PASSAGE #3.
84	PAINT BENJAMIN MOORE "EDGEcomb GRAY"
85	THREADED ROD PLATFORM SUPPORT SECURED TO ROOF STRUCTURE. RETURN AT ALL CORNERS AS APPLICABLE.
86	6" "04 BUTTERS-CORNER" VINYL BASE W/ PREFORMED OUTSIDE CORNER.
87	PAINT BENJAMIN MOORE "WHEATFIELD"

- CONTROL JOINT NOTE :**
 GWB CONTROL JOINTS SHALL HAVE A MAXIMUM SPACING OF 30'-0" OC HORIZONTALLY.
- INTERIOR ELEVATIONS KEYED NOTES**
- ITEMS MARKED N/A ARE NOT APPLICABLE. ALL PAINT NUMBERS ARE BENJAMIN MOORE & CO. MATERIALS (BM). FOLLOWING ARE REFERENCE TO INTERIOR ELEVATIONS. FOR OTHER FINISHES, REFER TO INTERIOR MATERIALS AND FINISH SCHEDULE.
- PLEASE NOTE: GRAPHICS APPLIED ON MIRRORS ARE TO BE INDIVIDUAL LETTERS.
- DESCRIPTION**
- BEAUTY GRAPHIC (GREEN) BY WALGREENS.
 - BEAUTY HANGING SIGN BY WALGREENS (ROUGH-IN BY GENERAL CONTRACTOR)
 - PHARMACY HANGING SIGN BY WALGREENS (ROUGH-IN BY GENERAL CONTRACTOR)
 - WALGREENS GRAPHIC BY WALGREENS.
 - PHOTO HANGING SIGN BY WALGREENS (ROUGH-IN BY GENERAL CONTRACTOR)
 - MARKET GRAPHIC (ORANGE) BY WALGREENS
 - HEALTH GRAPHIC (BLUE) BY WALGREENS
 - ONE-WAY MIRROR BETWEEN OFFICE AND PHOTO. SEE DETAIL 13/A4.2
 - VINYL WALL COVERING (SELECTION "A"), WHERE APPLICABLE, RETURN CONTROL JOINT (TYP.) AT SOFFITS, CONTINUE VERTICAL JOINT UNDERSIDE THE WIDTH OF SOFFIT. DO NOT INTERRUPT GRAPHIC DECALS W/ C.J. SEE WALL LOGO AND SIGN SPECS. THIS SHEET.
 - PASSPORT SCREEN, PROVIDE 1 X 8 X 48" L MIN. BLOCKING UNDER G.W.B. SEE DETAIL 13 / A4.5.
 - EMERGENCY EXIT SIGN. REFER TO ELECTRICAL DRAWINGS.
 - 6" BLACK VINYL BASE W/ PREFORMED OUTSIDE CORNER. RETURN AT ALL CORNERS AS APPLICABLE.
 - WALL CLOCK - SETH THOMAS #Y7610, FURNISHED BY WALGREENS.
 - 1 X 8 WOOD GROUNDS OR PLYWOOD FOR SALES AREA SHELVING
 - PLASTIC LAMINATED SILL - FRONT WALL.
 - ACOUSTICAL CEILING TILE.
 - NO VINYL OR PAINT REQUIRED BEHIND SHELVING AND ABOVE CEILING.
 - PHOTO HANGING SIGN. REFER TO ELECTRICAL DRAWINGS.
 - INSULATING GLASS WITH ALUMINUM STOREFRONT FRAMING, EQUALLY SPACED PANEES.
 - PAINT DOORS AND FRAMES (SEE RM. FINISH SCHEDULE).
 - WALL MIRRORS, SET AT ANGLE - EQUALLY SPACED, (30"-42" WIDE).
 - OPENING BETWEEN GENERAL SALES AREA AND PATIENT SEATING
 - 2x6 WOOD BLOCKING UNDER GWB. TO ANCHOR TOP AND BOTTOM OF
 - 1/4" LAMINATED SECURITY GLASS W/ LAMINATED SILL. SEE A4.1.
 - ROLL DOWN SHUTTER. BY WALGREENS.
 - LOW WALL WITH LAMINATED CAP (WHERE APPLICABLE).
 - OPENING BETWEEN 1-HOUR PHOTO AND GENERAL SALES AREA.
 - PAPER TOWEL DISPENSER.
 - SLAT WALL. BY WALGREENS.
 - 3'-6" W X 7' H FRAMED OPENING BEHIND DRYWALL FOR FUTURE "IN" WINDOW.
 - 3/4" PLYWOOD BACKING STUDS UNDER GWB.
 - WALK-IN COOLER OPENING.
 - APPLY WALL BASE CONTINUOUSLY ALONG EXPOSED PORTION OF COOLER BELOW DOORS. CUT TOP OF BASE AS REQUIRED TO FIT.
 - 2X4 CLEAT ALONG WALL FOR SUPPORT OF COUNTERTOP.
 - PLASTIC LAMINATED COUNTERTOP WITH BACK AND SIDE SPLASHES, LENGTH TO ALLOW 32" CLEAR SPACE ALONG WALL FOR REFRIGERATOR. CAULK JOINT BETWEEN BACK/SIDE SPLASH AND WALL. CAULK COLOR TO BE WHITE. BY GENERAL CONTRACTOR. ORDER CABINET AND COUNTER THROUGH MYERS TEL.: 217-735-1241.
 - A.D.A. CLEARANCE REQUIREMENT W/ PIPE PADDING.
 - 24" DEEP LAMINATED COUNTERTOP AND SUPPORTS WITH KEYBOARD/MOUSE PLATFORM BY WALGREENS.
 - 30" W X 24" H CABINET. BY WALGREENS.
 - 4'-0" H X LENGTH OF COUNTER MIRROR (LESS 6" EACH END FOR OUTLET COORDINATE WITH E1.2) 1/4" #1 QUALITY PLOISHED PLATE GLASS. ELECTROLYTICALLY COPPER PLATED- GLUE TO BE GWB BEHIND WITH C.R. LAURENCE "MIRRO-MASTIC #600GL" (NON ASBESTOS) SCOPES 18" O.C. EACH WAY.
 - PANELING - SEE DETAIL 15/A4.2. WALL VINYL TO RUN 2" BEHIND PANELING ON FOUR WALLS.
 - REFRIGERATOR BY WALGREENS.
 - STAINLESS STEEL SINK.
 - CONVEX MIRROR BY WALGREENS



NO.	DATE	BY	DESCRIPTION	CONST
REVISIONS				

CERTIFICATION AND SEAL

I, HEREBY CERTIFY THAT THIS PLAN AND SPECIFICATION WAS PREPARED BY ME OR UNDER MY DIRECT SUPERVISION AND THAT I AM A DULY REGISTERED ARCHITECT OR ENGINEER UNDER THE LAWS OF THE STATE OF MAINE AS SIGNIFIED BY MY HAND AND SEAL.

FISCAL 2007 CRITERIA - STORE #12326

WALGREENS
 (NWC) WASHINGTON & ALLEN AVES.
 PORTLAND, MAINE

DRAWING TITLE
INTERIOR ELEVATIONS

CADD PLOT:	SCALE: AS NOTED	DRAWING NO.
VOID PLOT:	DRAWN BY: TD	A3.1
RELEASED TO CONSTRUCTION	DATE: 3-26-09	
	REVIEWED BY: SAM	