

DRAWINGS/SPECIFICATIONS BY:  
 WALGREENS'  
 LANDLORD'S CONSULTANT

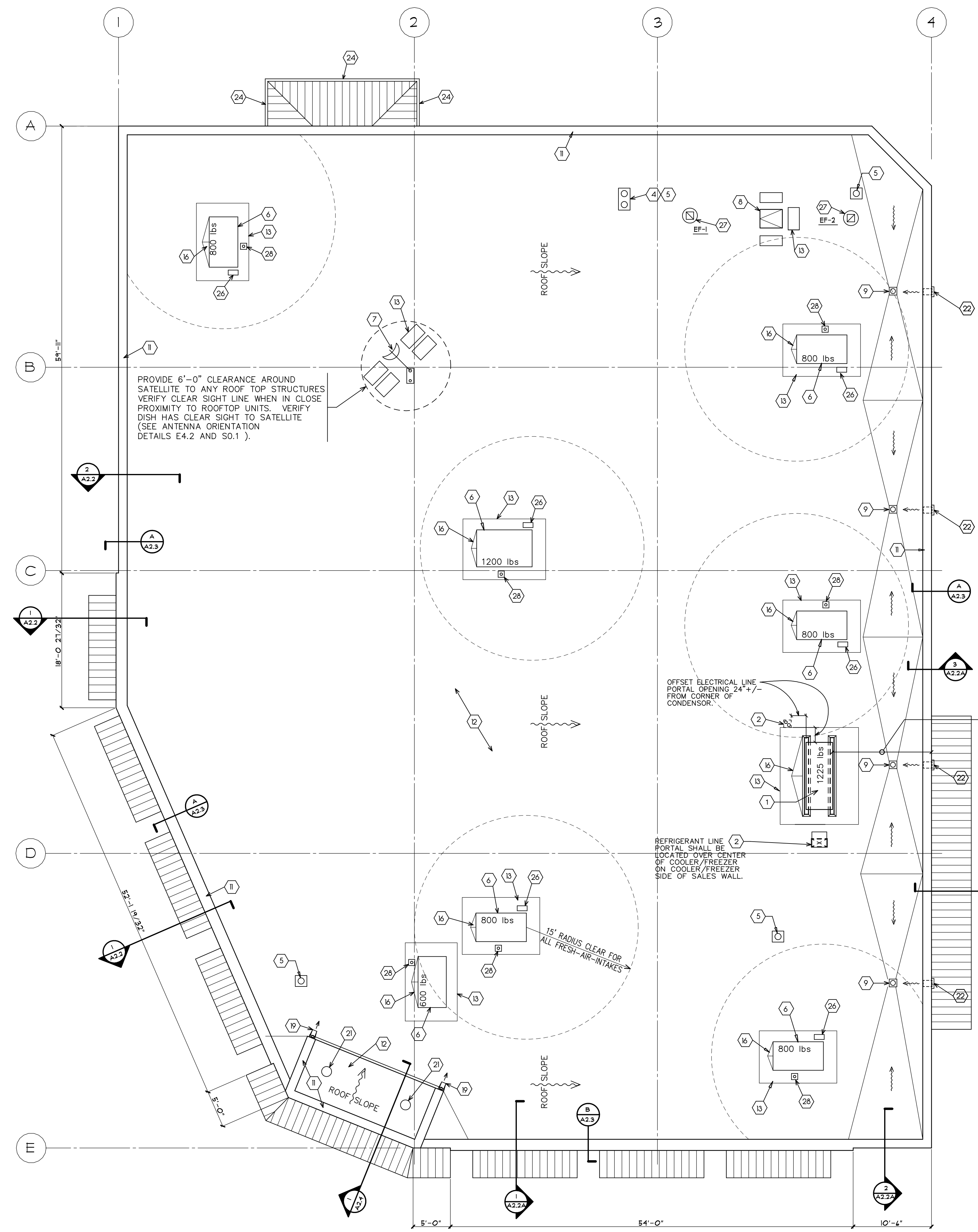
ALL CONSTRUCTION WORK, UNLESS NOTED OTHERWISE, BY:  
 WALGREENS' CONTRACTOR  
 LANDLORD'S CONTRACTOR (TURNKEY CONSTRUCTION)

STORE	BUILDING
NEW . . . . . <input checked="" type="checkbox"/>	NEW . . . . . <input checked="" type="checkbox"/>
REMODELING . . . . . <input type="checkbox"/>	EXISTING . . . . . <input type="checkbox"/>
RELOCATION . . . . . <input type="checkbox"/>	NEW SHELL ONLY . . . . . <input type="checkbox"/>
OTHERS . . . . . <input type="checkbox"/>	

- KEYED NOTES
- 1 COMPRESSOR UNIT. SEE DETAIL 1/A4.5 AND SHEET M1.1.
  - 2 PIPE PENETRATION THROUGH ROOF DIRECTLY OVER COOLER/FREEZER. SEE DETAIL 1/A4.5 AND 5/M2.1.
  - 3 RIDGE VENT.
  - 4 POST HYDRANT AND VENT. SEE DETAIL 6/P2.1.
  - 5 VENT THROUGH ROOF. SEE PLUMBING PLAN ON SHEET P1.2 AND DETAIL 9/A4.1.
  - 6 ROOF TOP HVAC UNIT. SEE DETAIL 1/A4.5 AND SHEETS M1.1 AND M2.1.
  - 7 SATELLITE DISH ANTENNA. SEE SHEET S0.1.
  - 8 ROOF SCUTTLE. SEE DETAIL 4,5/A4.5. COORDINATE JOIST SPACING TO LADDER LOCATION.
  - 9 ROOF DRAINS WITH SLOPING SUMP PANS.
  - 10 CANOPY
  - 11 PARAPET WITH SHEET METAL COPING. SEE SHEET A2.1, A2.2, AND A2.2A.
  - 12 MEMBRANE ROOF WITH PROPER ROOF DRAINAGE
  - 13 ROOF PADS TO BE PLACED AROUND ALL ROOF TOP UNITS.
  - 14 2'-6" X 3' HM DOOR WITH PULLS BOTH SIDES. SEE DOOR SCHEDULE FOR ALL HARDWARE.
  - 15 ACCESS PANEL-2'-0"W X 3'-0"H, 2'-0" OFF FLOOR. PROVIDE PULL ON BACK FOR CLOSING
  - 16 TAPERED INSULATION CRICKET SLOPE TO DRAINS
  - 17 OSHA COMPLIANT LADDER. SEE SHEET A2.4.
  - 18 NOT USED.
  - 19 4" GUTTER, 4" DOWNSPOUT, AND SPLASH BLOCK ON ROOF
  - 20 FLOOR MOUNTED STRIP LIGHTING.
  - 21 TOWER VENT.
  - 22 OVERFLOW SCUPPER. SEE DETAIL 10/A1.4
  - 23 TOTE STORAGE ROOF.
  - 24 4" GUTTER AND 4" DOWNSPOUT.
  - 25 WATER HEATER VENT PIPE.
  - 26 SPLASHBLOCK ON WALKWAY PAD FOR CONDENSATE DRAIN. REFER TO DETAIL 10/M2.1 FOR CONDENSATE DRAIN.
  - 27 EXHAUST FAN SEE SHEETS M1.1 AND M2.2.T.
  - 28 SINGLE PIPE PORTAL FOR GAS PIPE TO R.T.U. REFER TO DETAIL 9/A1.4.

NOTE:  
 PROVIDE 15'-0" CLEARANCE BETWEEN ALL FRESH-AIR-INTAKES AND PLUMBING VENT STACKS AND EXHAUST FANS.

NOTE:  
 ALL ROOFTOP EQUIPMENT TO BE 10'-0" MIN. FROM PARAPET WALL ( TYP. )

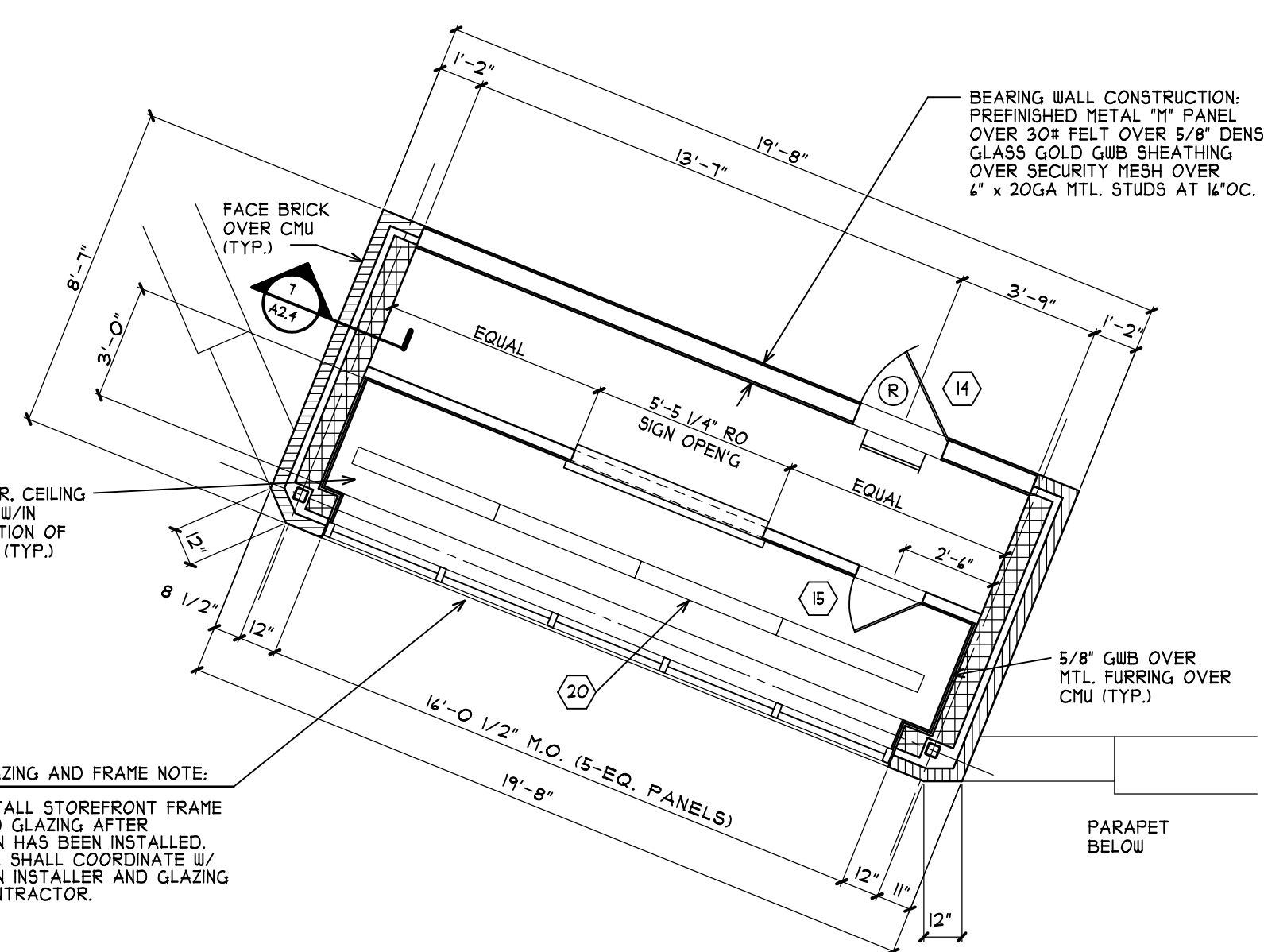


ALL ROOF TOP EQUIPMENT SHALL BE 10'-0" MINIMUM FROM PARAPET WALL ( TYP. )

OFFSET ELECTRICAL LINE PORTAL OPENING 24" +/- FROM CORNER OF CONDENSOR.

REFRIGERANT LINE PORTAL SHALL BE LOCATED OVER CENTER OF COOLER/FREEZER ON COOLER/FREEZER SIDE OF SALES WALL.

**ROOF PLAN**  
 SCALE: 1/8" = 1'-0"



GLAZING AND FRAME NOTE:  
 INSTALL STOREFRONT FRAME AND GLAZING AFTER SIGN HAS BEEN INSTALLED. G.C. SHALL COORDINATE W/ SIGN INSTALLER AND GLAZING CONTRACTOR.

**2 ENTRANCE TOWER FLOOR PLAN**  
 SCALE: 1/4" = 1'-0"

NO.	DATE	BY	DESCRIPTION	CONST

REVISIONS

CERTIFICATION AND SEAL

I HEREBY CERTIFY THAT THIS PLAN AND SPECIFICATION WAS PREPARED BY ME OR UNDER MY DIRECT SUPERVISION AND THAT I AM A DULY REGISTERED ARCHITECT OR ENGINEER UNDER THE LAWS OF THE STATE OF MAINE AS SIGNIFIED BY MY HAND AND SEAL.

FISCAL 2007 CRITERIA - STORE #12326

WALGREENS  
 (NWC) WASHINGTON & ALLEN AVES.  
 PORTLAND, MAINE

DRAWING TITLE  
**ROOF PLAN AND DETAILS**

CADD PLOT:	SCALE: AS NOTED	DRAWING NO.
VOID PLOT:	DRAWN BY: TD/WAL	<b>A1.3</b>
RELEASED TO CONSTRUCTION	DATE: 3-26-09	
	REVIEWED BY: SAM	