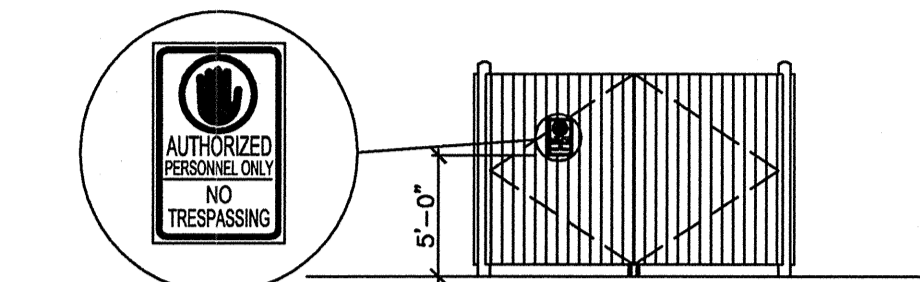
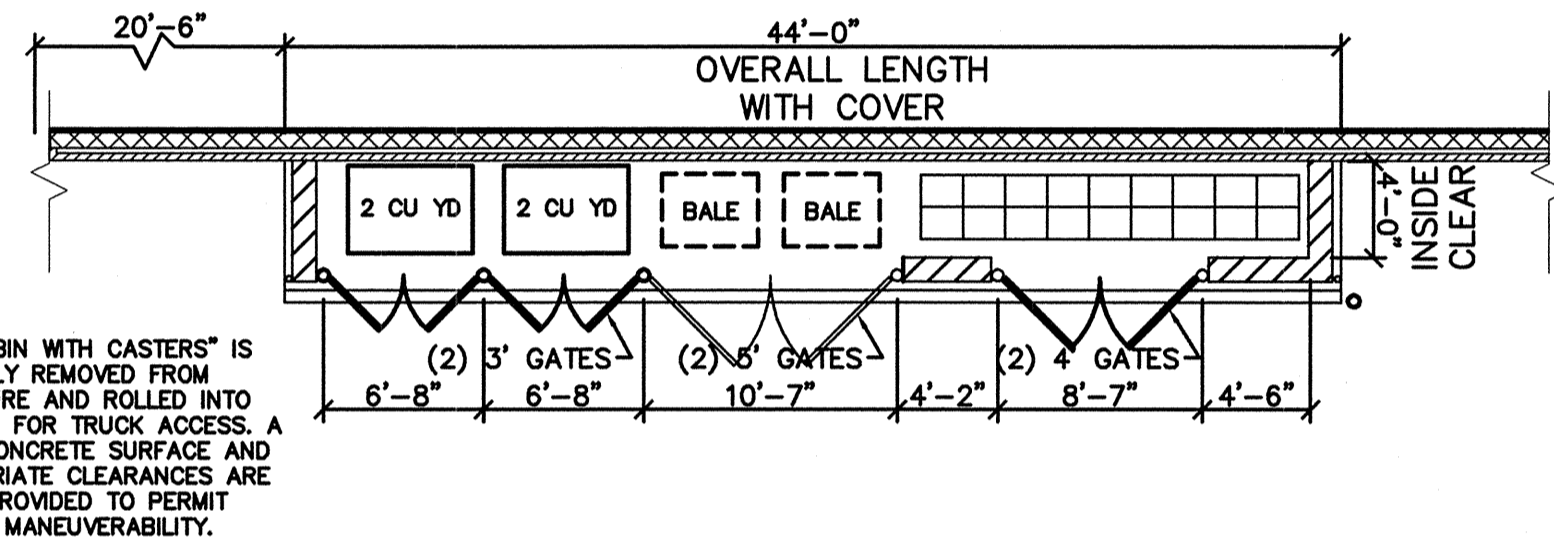


FIELD INLET (TYP.)
N.T.S.



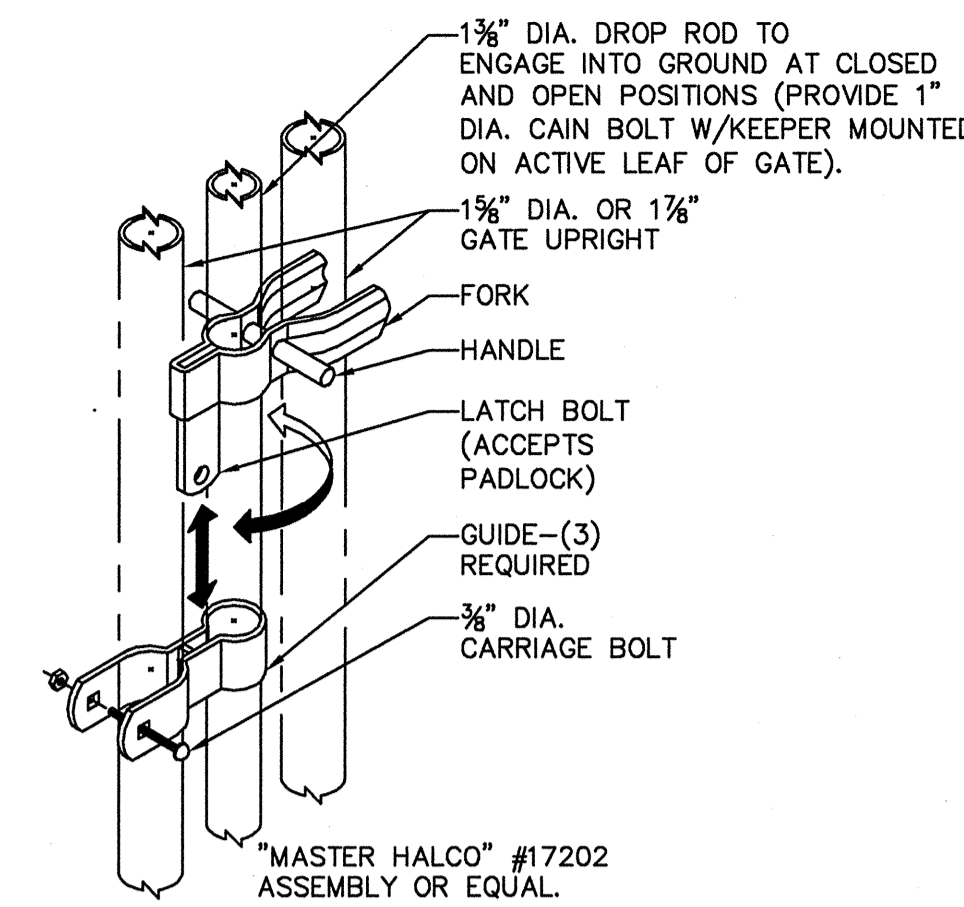
ELEVATION - SIGN PLACEMENT
NOT TO SCALE



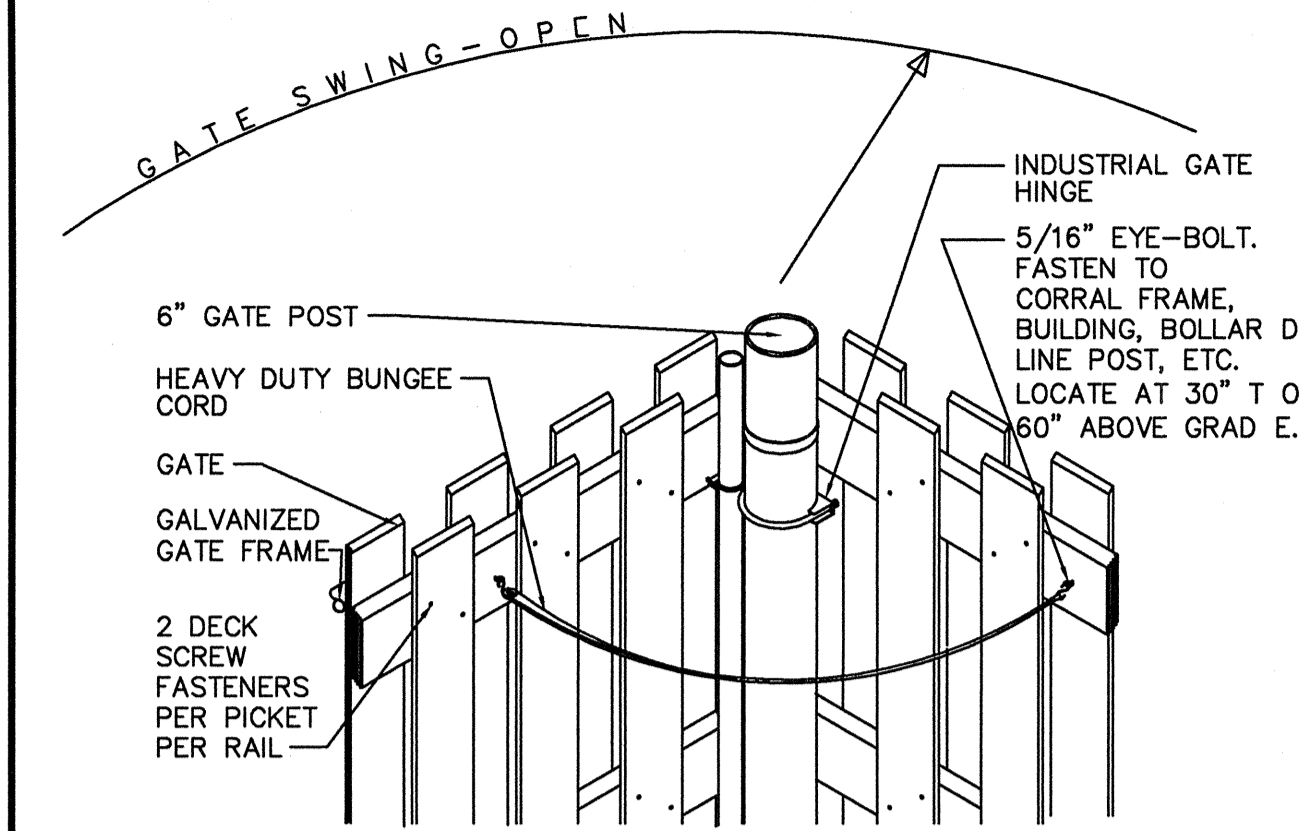
PLAN AT TOTE, BALE, & TRASH ENCLOSURE
NOT TO SCALE

NOTE: "BIN WITH CASTERS" IS MANUALLY REMOVED FROM ENCLOSURE AND ROLLED INTO POSITION FOR TRUCK ACCESS. A LEVEL CONCRETE SURFACE AND APPROPRIATE CLEARANCES ARE TO BE PROVIDED TO PERMIT MANUAL MANEUVERABILITY.

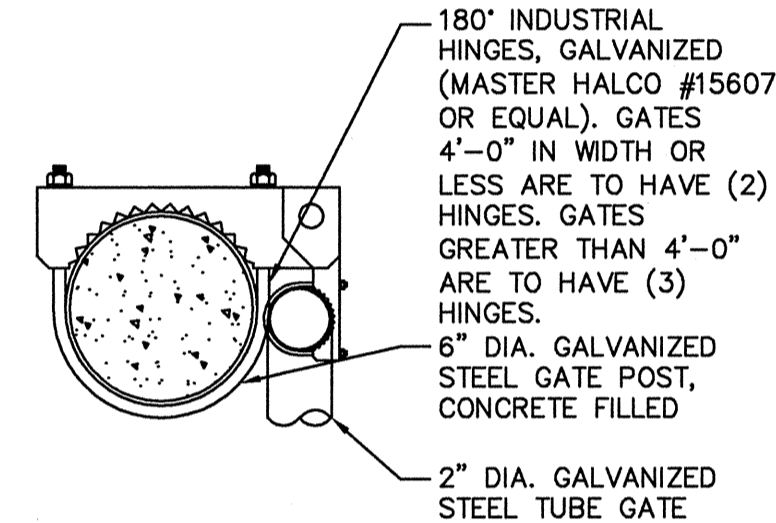
NOTE: A MANUALLY REMOVED BIN IS ONLY USED IN CERTAIN URBAN AREAS. CONTACT A.C.E.S. CO. INC. TO DETERMINE APPLICABILITY AND WALGREENS PROJECT ARCHITECT FOR APPROVAL.



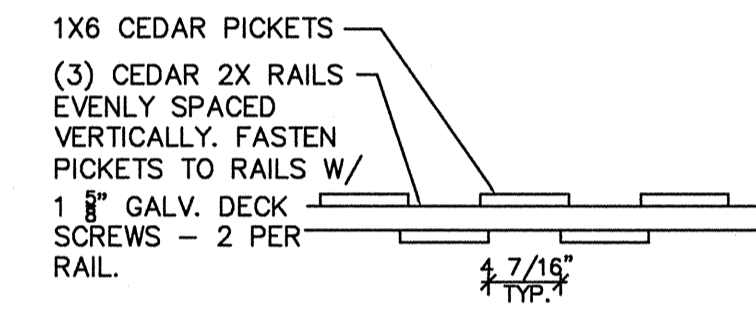
INDUSTRY LATCH W/DROP ROD AND GATE HINGE
NOT TO SCALE



GATE HOLD-OPEN
NOT TO SCALE



INDUSTRIAL HINGE DETAIL
NOT TO SCALE



FENCE DETAIL
NOT TO SCALE

NOTE: BOTTOM OF PICKETS INCLUDING GATES, TO BE 6" ABOVE CONCRETE PAD.

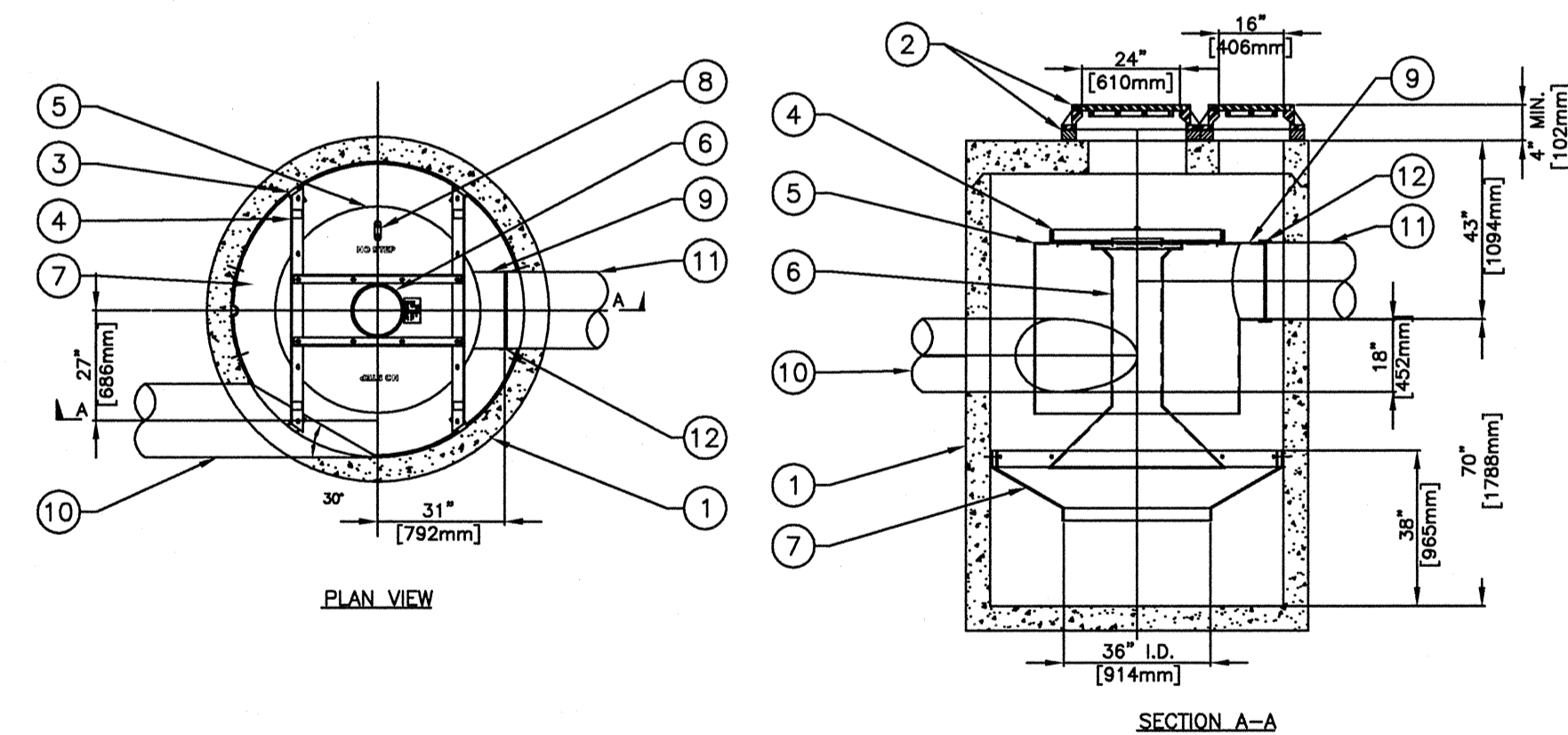
GENERAL NOTES:

1. WOOD FENCE ENCLOSURE AND GATES. CEDAR WOOD BOARD ON BOARD FENCE WITH CLEAR PROTECTIVE FINISH. CEDAR WOOD GATES TO BE STEEL FRAMED WITH 6" Ø STEEL HINGE POSTS AND 2.375" O.D. NOMINAL GALVANIZED LINE POSTS. INDUSTRIAL GRADE CANE DROP BOLTS (FOR HOLD OPEN AND SECURE CLOSE POSITIONS) WITH PADLOCK HASP AND GALVANIZED, SURFACED-MOUNTED BOLT ON HINGES (SIM. TO PART #15607) BY MASTER HALCO, INC. (800) 229-5615) OR EQUAL.

2. A 12"W X 18"H SIGN LABELED "AUTHORIZED PERSONNEL ONLY - NO TRESPASSING", SHALL BE PLACED ON EXTERIOR SIDE OF ENCLOSURE, BY WALGREENS CONTRACTOR. MOUNT SIGN PLUMB AND AT 5'-0" ABOVE CONCRETE PAD TO BOTTOM OF SIGN WITH CORROSION AND TAMPER RESISTANT FASTENERS.

3. CLEAR "TUFTEX POLYCARB" OR STANDING SEAM METAL ROOF PANEL OVER TREATED WOOD FRAMING, FASTENED TO AND CANTILEVERED FROM BUILDING, SHALL BE PROVIDED OVER TOTE STORAGE.

4. CONCRETE: PAD SHALL BE A MINIMUM OF 3,000 P.S.I. AIR ENTRAINED CONCRETE 6" THICK WITH #4 BARS X 12" O.C. EACH WAY. SURFACE TO RECEIVE BROOM FINISH, AND SHALL BE FLAT EXCEPT FOR WASH (1.66 PERCENT MAXIMUM).



PARTS LIST		
ITEM	SIZE	DESCRIPTION
1	72 in. 1829mm	I.D. CONCRETE MANHOLE
2	24 in. 610mm	MANHOLE LID, FRAME & COVER
	16 in. 406mm	MANHOLE LID, FRAME & COVER
3		LEDGER ANGLE (TYP.)
4		SUPPORT FRAME
5		DIP PLATE
6		CENTER SHAFT & CONE
7		BENCHING SKIRT
8		FLOATABLES LID W/ VENT
9	18 in. 457mm	OVERFLOW PIPE STUB
10	18 in. 457mm	TANGENTIAL INLET PIPE (BY OTHERS)
11	18 in. 457mm	OVERFLOW PIPE (BY OTHERS)
12		PIPE COUPLING (BY OTHERS)

EQUIPMENT PERFORMANCE

The stormwater treatment unit shall adhere to the hydraulic parameters given in the chart below and provide the removal efficiencies and storage capacities as follows:

- Performance objectives: The unit shall be capable of treating the peak flow rate listed below.
- Peak treatment flow: 8.0 cfs [227 l/s]
- Depth of flow in overflow pipe at 8.0 cfs: 11 in. [280mm]
- Estimated headloss* at 8.0 cfs: 8 in. [204mm]
- Sediment storage capacity: 2.10 Cu. yd. [1.61 cu.m.]
- Oil storage capacity: 230 Gal. [871 liters]
- Sediment shall be stored in a zone that is isolated from the main flow path and protected from reentrainment by a benching skirt.

*Headloss is defined as the difference between static water level at the inlet of the Downstream Defender to the free water surface in the overflow pipe, assuming free discharge.

Dimensions are general and intended for guidance only. The orientation of the inlet pipe and overflow pipe can be adjusted to site requirements. See site plan for orientation.

6" Ø DOWNSTREAM DEFENDER**
N.T.S.

** OR ANY APPROVED EQUIVALENT STRUCTURE CAPABLE OF TREATING 0.65 ACRES AT A 60% TSS REMOVAL RATING

NOTE: THIS PLAN SET IS ISSUED FOR CONSTRUCTION.

CONSULTANT PROJECT NO. 1909

PROJECT TYPE

DRAWINGS/SPECIFICATIONS BY:

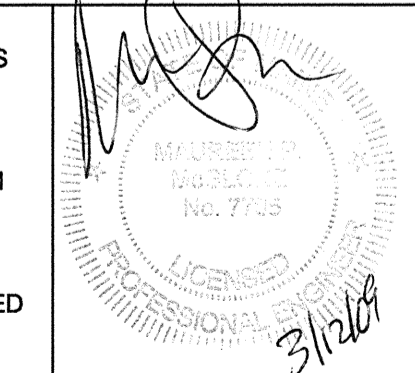
WALGREENS'
 LANDLORD'S CONSULTANT
ALL CONSTRUCTION WORK, UNLESS NOTED OTHERWISE, BY:
 WALGREENS' CONTRACTOR
 LANDLORD'S CONTRACTOR (TURNKEY CONSTRUCTION)

STORE		BUILDING	
NEW	<input checked="" type="checkbox"/>	NEW	<input checked="" type="checkbox"/>
REMODELING	<input type="checkbox"/>	EXISTING	<input type="checkbox"/>
RELOCATION	<input type="checkbox"/>	NEW SHELL ONLY	<input type="checkbox"/>
OTHERS	<input type="checkbox"/>		

NO.	DATE	BY	DESCRIPTION	CONST
0	03/12/09	MPM	ISSUED FOR CONSTRUCTION	
B	12/22/08	MPM	RESPONSE TO CITY COMMENTS	
A	10/15/08	MPM	PER MDEP COMMENTS	
-	09/22/08	MPM	RESPONSE TO CITY COMMENTS	

REVISIONS
CERTIFICATION AND SEAL

I HEREBY CERTIFY THAT THIS PLAN AND SPECIFICATION WAS PREPARED BY ME OR UNDER MY DIRECT SUPERVISION AND THAT I AM A DULY REGISTERED ARCHITECT OR ENGINEER UNDER THE LAWS OF THE STATE OF MAINE AS SIGNIFIED BY MY HAND AND SEAL.



STORE NUMBER 12326
PROJECT NAME
WALGREENS - STORE #12326
(NWC) WASHINGTON AND ALLEN PORTLAND, MAINE

DRAWING TITLE
MISCELLANEOUS DETAILS
CADD PLOT: SCALE: _____ DRAWING NO. _____
VOID PLOT: DRAWN BY: JBC
DATE: 12/07
SUPERSEDES PLAN DATED: _____ MPM
OF ___ DWGS.

C4.5



GP Gorrill-Palmer Consulting Engineers, Inc.
Engineering Excellence since 1998
PO Box 1237 207-657-6910
15 Shaker Road 207-657-6912
Gray, ME 04039 E-Mail: mailbox@gorrillpalmer.com