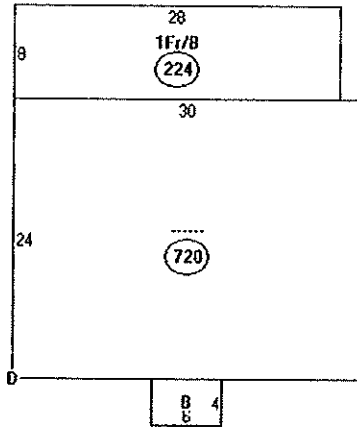


88 Pennell Ave
 2013-02503
 344-D-021
 R-3 Zone



Descriptor/Area	
A: ---	720 sqft
B: OFP	24 sqft
C: 1F1/B	224 sqft
D: RST	64 sqft

} = 968

$968 \times 50\% = 484$ ^{MAX} allowed

14-436 (a) applies i.e. 50% max use
 doesn't have lot area
 doesn't have setback

less than
 max allowed

New Dormer = $8' \times 28.5' = 228$ ^{sq}
 New

$228 \div 968 = 24\%$ of the
 Allowable 50% used