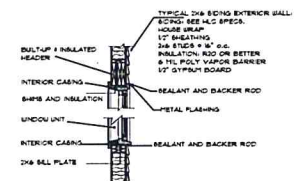


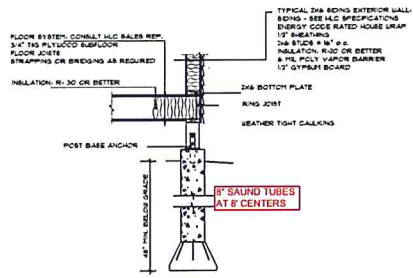
R.2 - STICK FRAMED ROOF DETAIL

REFER TO IRC 2009 FOR CODE REQUIREMENTS.



W.1 - 2x6 SIDING HEADER & BILL

REFER TO IRC 2009 FOR CODE REQUIREMENTS.



F.1 - POST W/ 2x6 WALL

REFER TO IRC 2009 FOR CODE REQUIREMENTS.

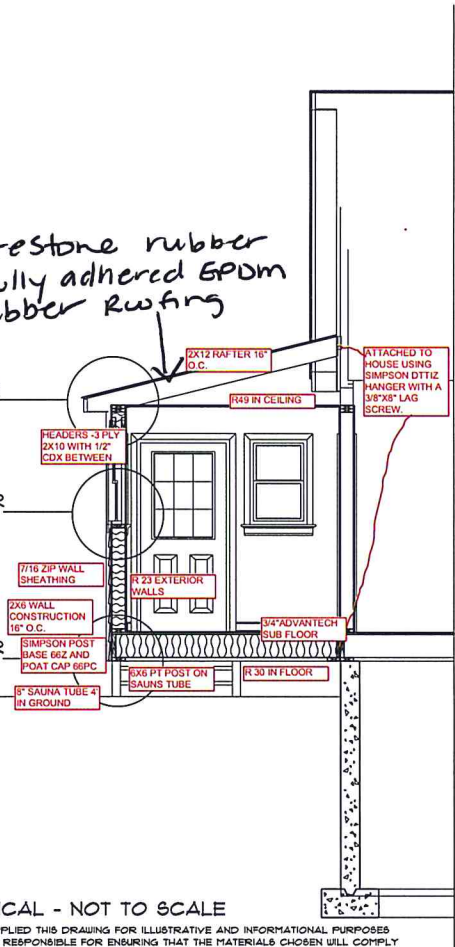
SECTION DETAILS

*Firestone rubber
Fully adhered GPM
rubber roofing*

SEE R.2 FOR DETAILS

SEE W.1 FOR DETAILS

SEE F.1 FOR DETAILS



TYPICAL - NOT TO SCALE

HAMMOND LUMBER COMPANY HAS SUPPLIED THIS DRAWING FOR ILLUSTRATIVE AND INFORMATIONAL PURPOSES ONLY. THE HOMEOWNER/CONTRACTOR IS RESPONSIBLE FOR ENSURING THAT THE MATERIALS CHOSEN WILL COMPLY WITH LOCAL BUILDING CODES AND/OR STANDARD BUILDING PRACTICES. HAMMOND LUMBER COMPANY SUGGESTS THAT OUR CUSTOMERS SEEK THE ASSISTANCE OF A REGISTERED ENGINEER OR ARCHITECT IF FURTHER INFORMATION IS NEEDED. THIS DRAWING IS NOT INTENDED TO BE USED AS A BASIS FOR CONSTRUCTION AND HAMMOND LUMBER COMPANY DISCLAIMS ANY RESPONSIBILITY IF THEY ARE SO USED.

CROSS SECTION

DRAWINGS ARE PREPARED BY HAMMOND LUMBER COMPANY AS A SERVICE TO OUR CUSTOMERS. THE INFORMATION PRESENTED IS FOR INFORMATIONAL PURPOSES ONLY. THE INFORMATION PRESENTED IS NOT INTENDED TO BE USED AS A BASIS FOR CONSTRUCTION. HAMMOND LUMBER COMPANY DISCLAIMS ANY RESPONSIBILITY IF THEY ARE SO USED.

DATE	DESCRIPTION	BY	CHKD
11-28-2017			
11-28-2017			

ASB Drawing September 28, 2017
RAB SCALE: 1/8" = 1'-0"
2 OF 2

AD11213

PORTLAND

JAYNE PASQUALI
8x16 ADDITION

OWN

