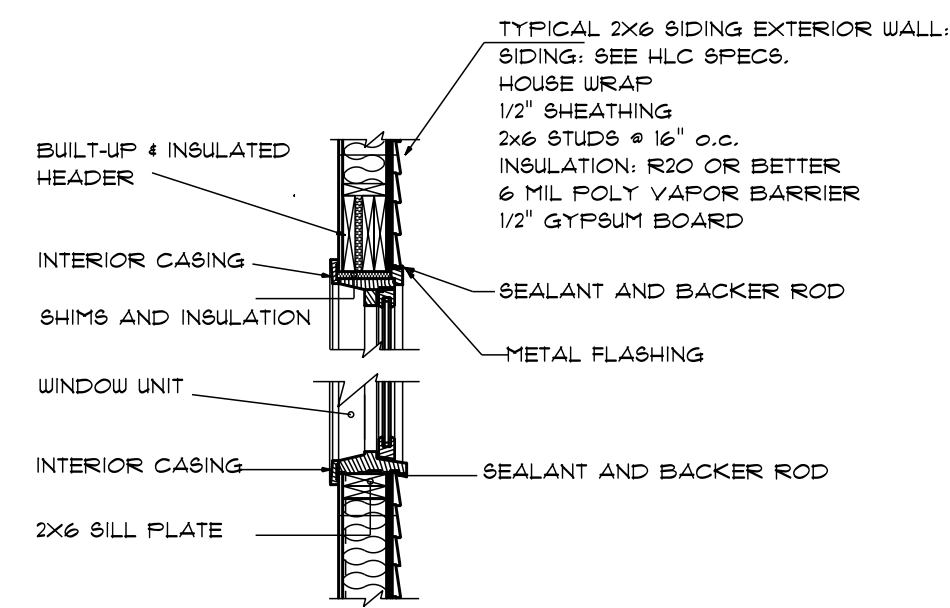


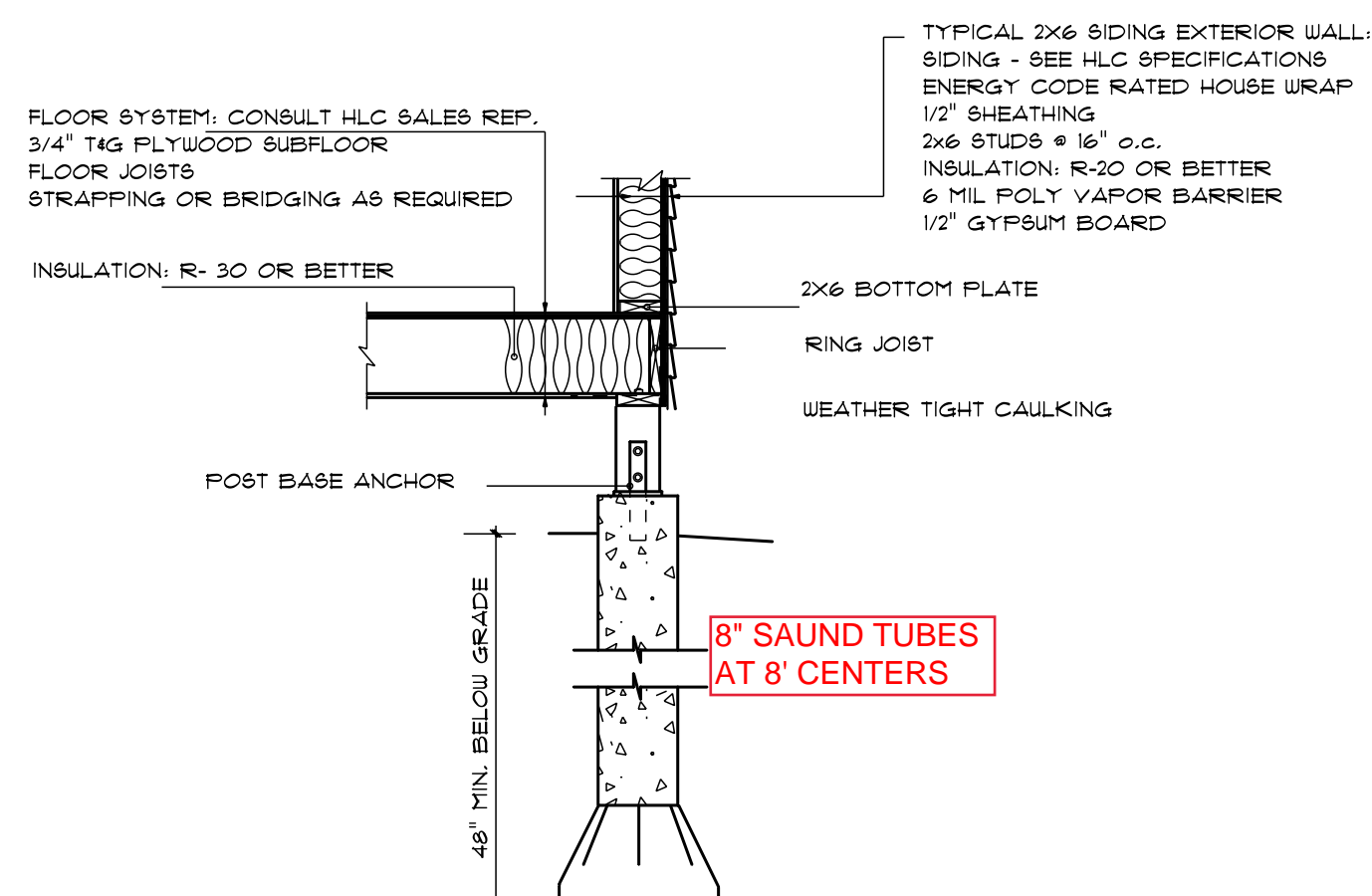
R.2 - STICK FRAMED ROOF DETAIL

REFER TO IRC 2009 FOR CODE REQUIREMENTS.



W.1 - 2X6/SIDING HEADER & SILL

REFER TO IRC 2009 FOR CODE REQUIREMENTS.



F.1 - POST W/ 2x6 WALL

REFER TO IRC 2009 FOR CODE REQUIREMENTS.

SECTION DETAILS

SEE R.2 FOR DETAILS

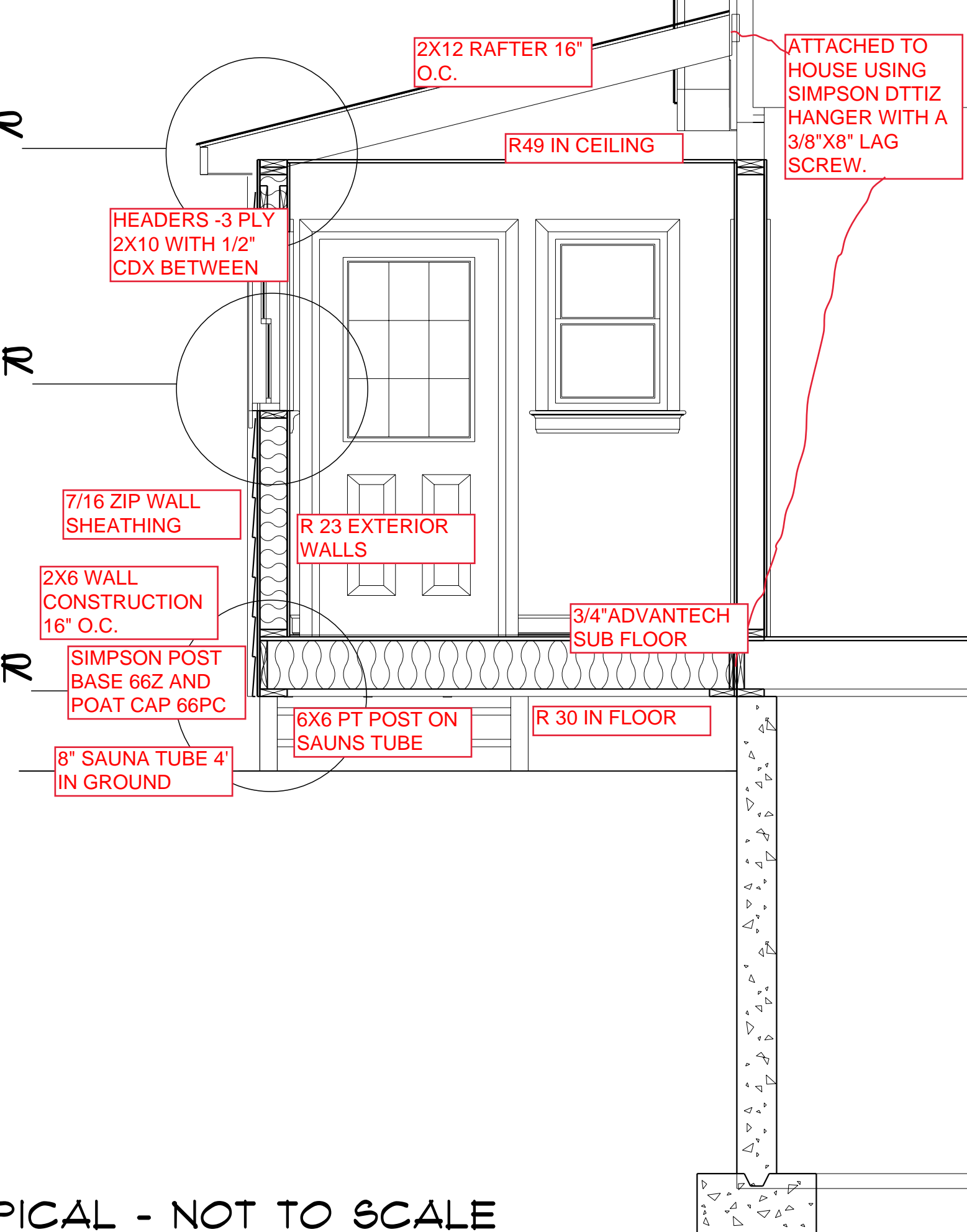
SEE W.1 FOR DETAILS

SEE F.1 FOR DETAILS

TYPICAL - NOT TO SCALE

HAMMOND LUMBER COMPANY HAS SUPPLIED THIS DRAWING FOR ILLUSTRATIVE AND INFORMATIONAL PURPOSES ONLY. THE HOMEOWNER/CONTRACTOR IS RESPONSIBLE FOR ENSURING THAT THE MATERIALS CHOSEN WILL COMPLY WITH LOCAL BUILDING CODES AND/OR STANDARD BUILDING PRACTICES. HAMMOND LUMBER COMPANY SUGGESTS THAT ISN'T CUSTOMERS SEEK THE ASSISTANCE OF A REGISTERED ENGINEER OR ARCHITECT IF FURTHER INFORMATION IS NEEDED. THIS DRAWING IS NOT INTENDED TO BE USED AS A BASIS FOR CONSTRUCTION AND HAMMOND LUMBER COMPANY DISCLAIMS ANY RESPONSIBILITY IF THEY ARE SO USED.

CROSS SECTION



DRAWINGS ARE PROVIDED BY HAMMOND LUMBER COMPANY AS A SERVICE TO OUR CUSTOMERS. THE INFORMATION PRESENTED IN THESE DRAWINGS IS NOT PREPARED BY A REGISTERED ENGINEER OR ARCHITECT. HAMMOND LUMBER COMPANY SUGGESTS THAT ITS CUSTOMERS SEEK THE SERVICES OF A REGISTERED ARCHITECT TO OBTAIN TECHNICAL ADVICE. HAMMOND LUMBER COMPANY DISCLAIMS ANY RESPONSIBILITY IF THEY ARE SO USED.

DATE	DESCRIPTION	BY	CHKD
9/25/2011			
9/27/2011			
SCALE	AS NOTED		
2			

ABB Thursday, September 29, 2011
 RAB SCALE: AS NOTED
 2 OF 2

DRAWING: AD11213
 PORTLAND

JAYNE PASQUALI
 8x16 ADDITION

OWN

