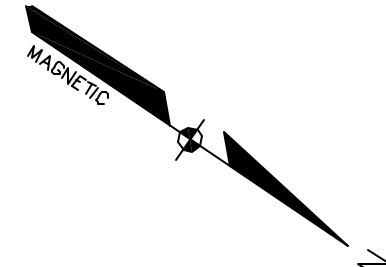
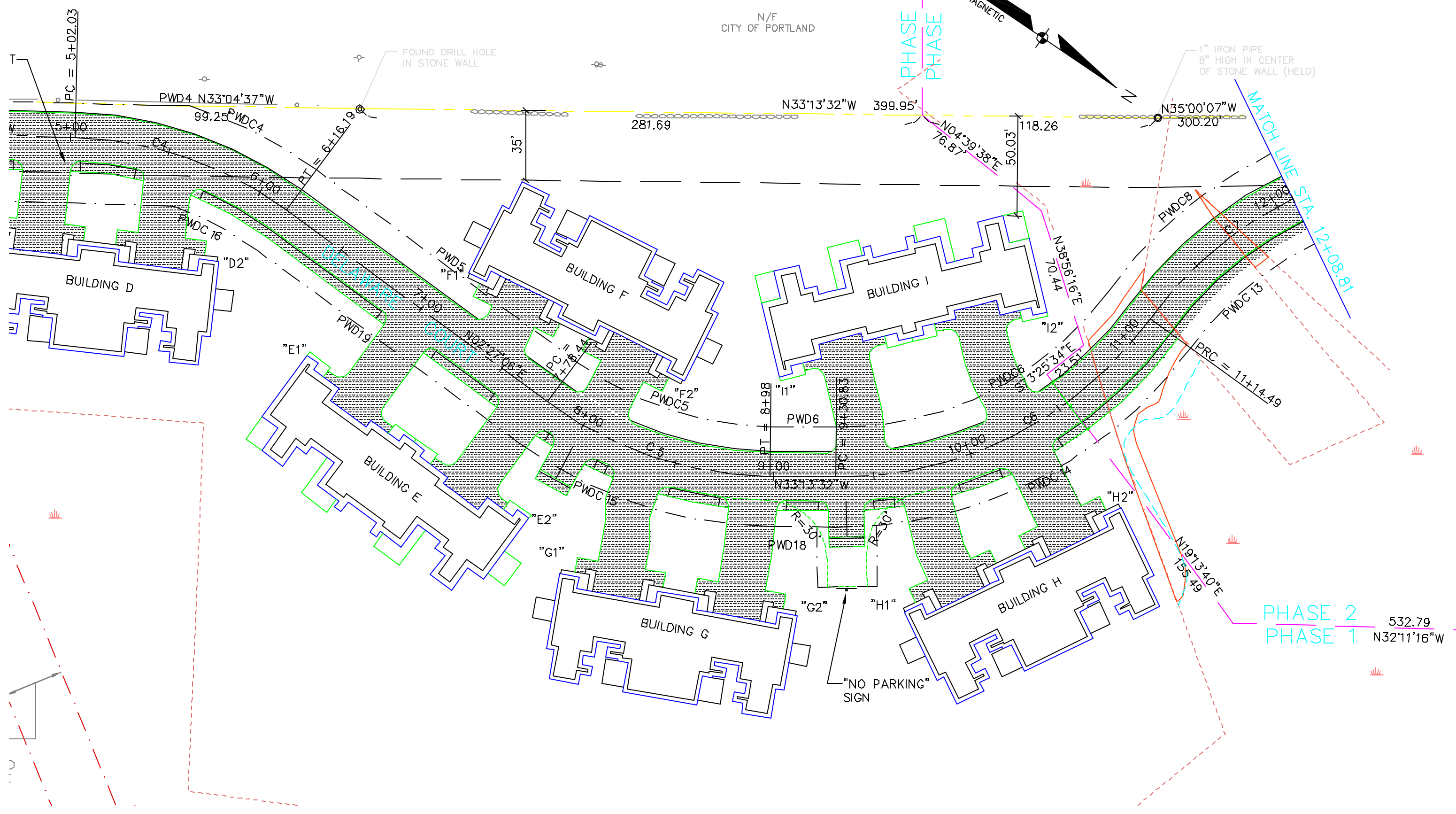


N/F
CITY OF PORTLAND



1" IRON PIPE
8" HIGH IN CENTER
OF STONE WALL (HELD)

PHASE 1
PHASE 2



PC = 5+02.03

PWD4 N33°04'37"W

N33°13'32"W 399.95'

N35°00'07"W 300.20'

N04°39'38"E 76.87'

N38°56'16"E 70.44'

N32°25'34"E 23.51'

N19°13'40"E 155.49'

PHASE 2
PHASE 1 532.79
N32°11'16"W

MATCH LINE STA. 12+08.81

"NO PARKING"
SIGN

FOUND DRILL HOLE
IN STONE WALL

