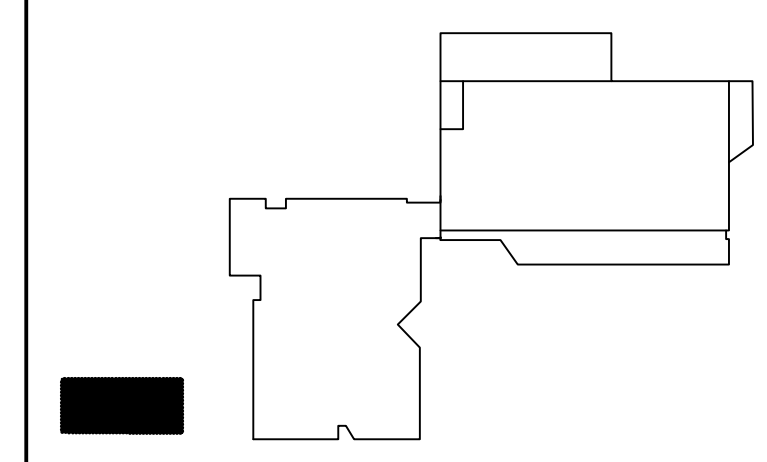


**GENERAL PROJECT NOTES:**

- ALL DEVICES SHALL BE NEW UNLESS OTHERWISE NOTED.
- ALL WORK SHALL BE INSTALLED IN A NEAT AND WORKMAN LIKE MANNER, RECTILINEAR TO BUILDING STRUCTURE, AND IN ACCORDANCE WITH ALL APPLICABLE CODES, INCLUDING, BUT NOT LIMITED TO NFPA 70, 72, 90A, AND DIRECTION OF AUTHORITY HAVING JURISDICTION.
- EXISTING AND NEW FIRE ALARM DEVICES ARE SHOWN IN THEIR APPROXIMATE LOCATION. CONTRACTOR SHALL REVIEW THE BUILDING AND FIELD VERIFY, TO DETERMINE EXACT MOUNTING LOCATIONS FOR FIRE ALARM DEVICES AND EQUIPMENT. CARE SHALL BE TAKEN TO AVOID EXISTING ELECTRICAL, MECHANICAL, SPRINKLER AND OTHER CEILING AND WALL MOUNTED DEVICES AND EQUIPMENT.
- ALL PENETRATION THROUGH FLOORS, RATED WALLS AND PARTITIONS SHALL BE SEALED WITH A U.L. LISTED AND APPROVED FIRE SEALANT MATERIAL TO MAINTAIN THE RATING OF THE SEPARATION.



**KEY PLAN**

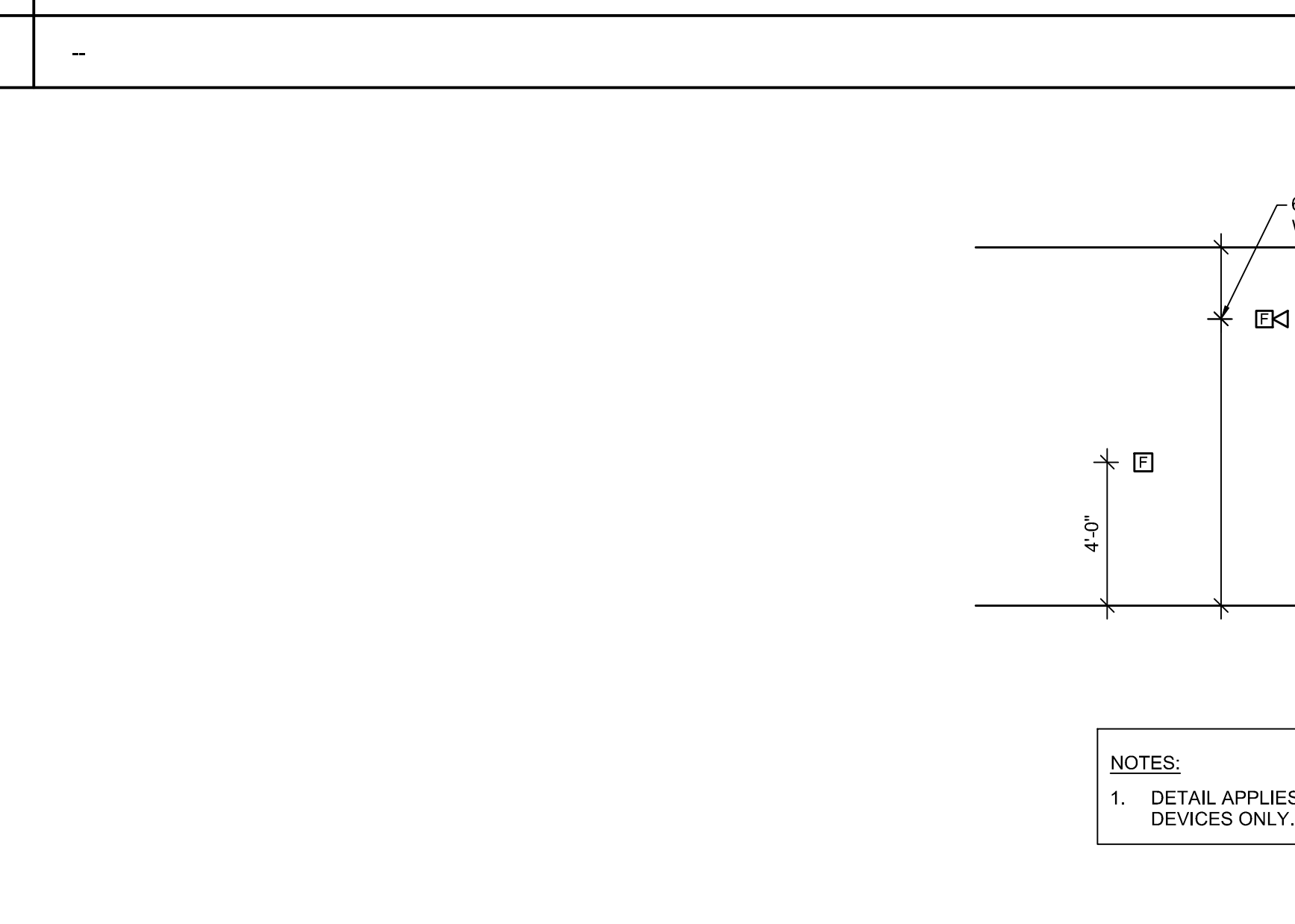
**LEGEND:**

- E EXISTING TO REMAIN
- ER EXISTING RELOCATED
- NR NEW TO REPLACE EXISTING IN EXISTING LOCATION
- R EXISTING TO BE REMOVED
- RR REMOVE & RELOCATE EXISTING
- FA FIRE ALARM HORN / LIGHT
- FA-1 MULTI-CANDELA STROBE
- FA-2 MULTI-CANDELA HORN/STROBE
- FA-3 CEILING MOUNTED MULTI-CANDELA HORN/STROBE
- FA-4 FIRE ALARM SYSTEM CEILING MOUNTED HEAT DETECTOR - 'EL' FOR ELEVATOR SHUNT TRIP
- FA-5 FIRE ALARM SYSTEM CEILING MOUNTED SMOKE DETECTOR - 'EL' FOR ELEVATOR RECALL
- FA-6 WALL MOUNTED FIRE ALARM SYSTEM MANUAL PULL STATION
- FA-7 KNOX BOX
- FA-8 JUNCTION BOX
- FA-9 DOOR HOLD-OPEN DEVICE CONNECTION
- FA-10 FIRE ALARM SYSTEM/SPRINKLER SYSTEM PRESSURE SWITCH
- FA-11 FIRE ALARM SYSTEM/SPRINKLER SYSTEM FLOW SWITCH
- FA-12 FIRE ALARM SYSTEM/SPRINKLER SYSTEM TAMPER SWITCH
- FA-13 FIRE ALARM SYSTEM DUCT MOUNTED SMOKE DETECTOR
- FA-14 FIRE ALARM SYSTEM CONTROL PANEL
- FA-15 FIRE ALARM ANNUNCIATOR
- FA-16 GAS SHUT-OFF
- FA-17 RADIO TRANSMITTER BOX
- FA-18 MONITOR MODULE
- FA-19 TEST STATION
- FA-20 RELAY MODULE
- FA-21 ANSUL GAS TANK

**FIRE ALARM SEQUENCE OF OPERATIONS**

SYSTEM INPUTS	SYSTEM OUTPUTS										
	ACTUATE COMMON ALARM SIGNAL	IDENTIFY ALARM AT FIRE ALARM CONTROL PANEL	IDENTIFY INITIATION DEVICE OR ZONE IN ALARM AT FIRE ALARM CONTROL PANEL	TRANSMIT FIRE ALARM TO REMOTE ALARM RECEIVING STATION	RELEASE DOORS HELD OPEN BY MAGNETIC DOOR HOLDERS	ACTIVATE EMERGENCY SHUTOFFS FOR GAS AND FUEL SUPPLIES	RECORD EVENTS IN FIRE ALARM CONTROL PANEL MEMORY	TRANSMIT SUPERVISORY SIGNAL TO REMOTE ALARM RECEIVING STATION	SHUT DOWN ASSOCIATED EQUIPMENT		
MANUAL FIRE ALARM PULL STATIONS	X	X	X	X	X	X	X				
HEAT DETECTORS	X	X	X	X	X	X	X				
SPOT SMOKE DETECTORS	X	X	X	X	X	X	X				
DUCT SMOKE DETECTORS				X				X	X		X
SPRINKLER WATERFLOW	X	X	X	X	X	X	X				
SPRINKLER CONTROL VALVE				X				X	X		
SPRINKLER HIGH/LOW AIR PRESSURE SWITCH				X				X	X		
KITCHEN HOOD FIRE-EXTINGUISHING SYSTEM OPERATION	X	X	X	X	X	X	X				
FIRE PUMP RUNNING				X				X	X		
FIRE PUMP LOSS OF POWER				X				X	X		
FIRE PUMP POWER PHASE REVERSAL				X				X	X		
DISABLED DEVICE				X				X	X		
LOST COMMUNICATION WITH AUXILIARY PANEL				X				X	X		
OPEN CIRCUIT				X				X	X		
SHORT CIRCUIT				X				X	X		
GROUND FAULT				X				X	X		
LOST COMMUNICATION WITH PERIPHERAL DEVICE				X				X	X		
FIRE ALARM AC POWER FAILURE				X				X	X		
ABNORMAL AC VOLTAGE AT FIRE ALARM CONTROL PANEL				X				X	X		
FIRE ALARM SYSTEM LOW BATTERY				X				X	X		
ABNORMAL SWITCH POSITION AT FIRE ALARM CONTROL PANEL				X				X	X		

**FIRE ALARM SEQUENCE OF OPERATIONS**



NOTES:  
1. DETAIL APPLIES TO NEWLY INSTALLED DEVICES ONLY.

N1 --  
NTS --

N5 --  
NTS --

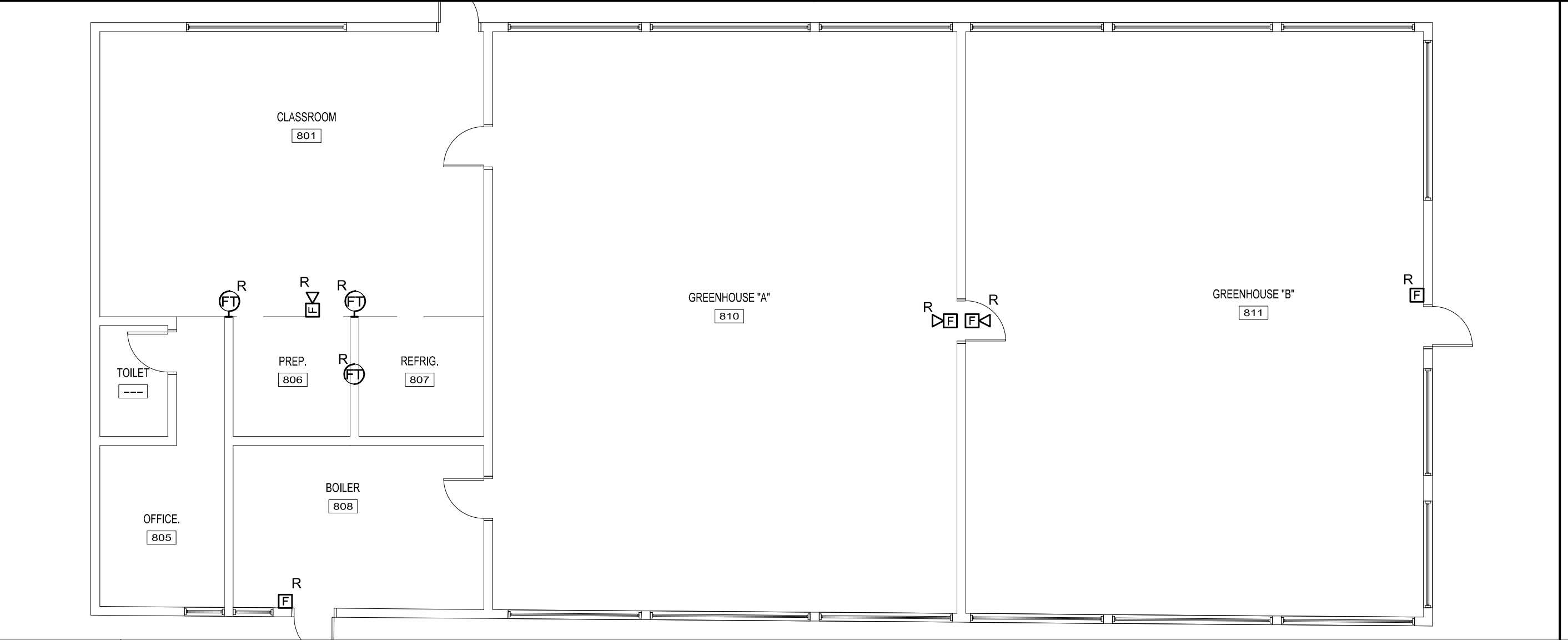
N8 --  
NTS --

J1 --  
NTS --

J5 --  
NTS --

J8 --  
NTS --

J12 --  
NTS --

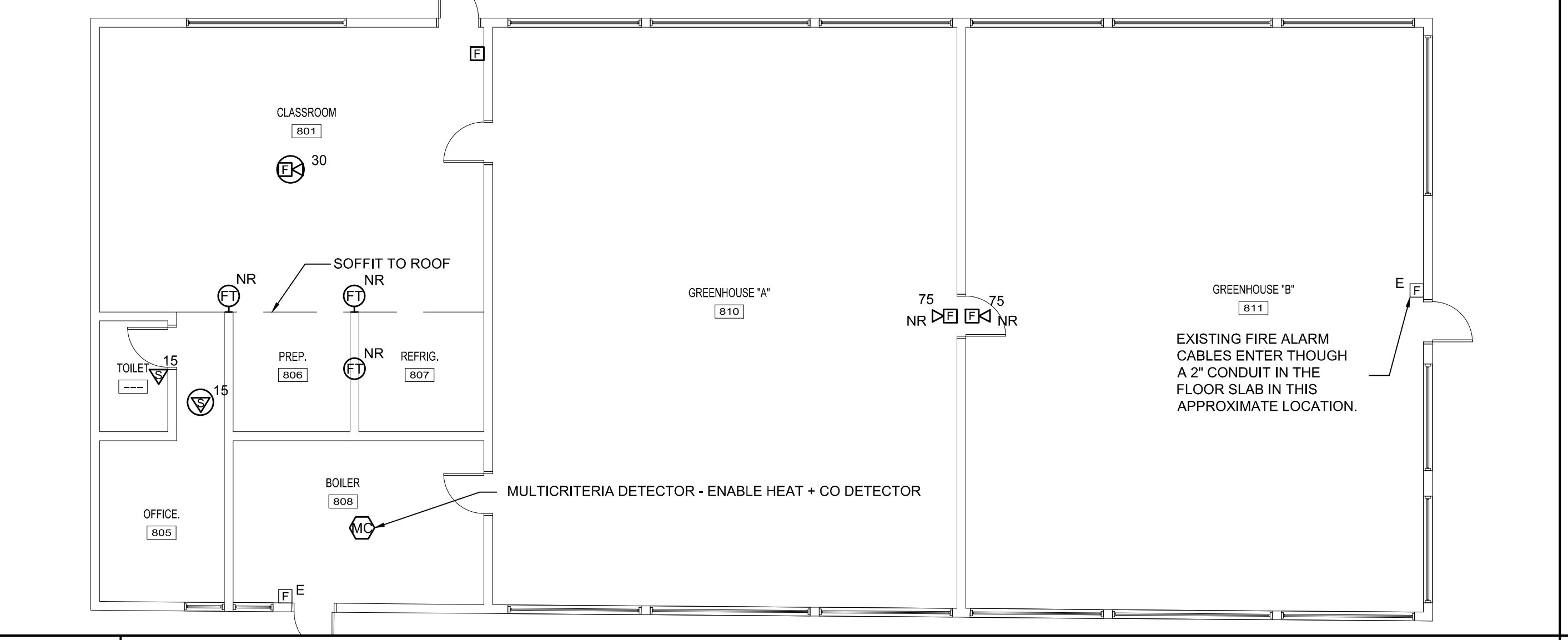


E1 GREEN HOUSE FIRE ALARM REMOVAL PLAN - ALTERNATE #2  
1/8" = 1'-0"

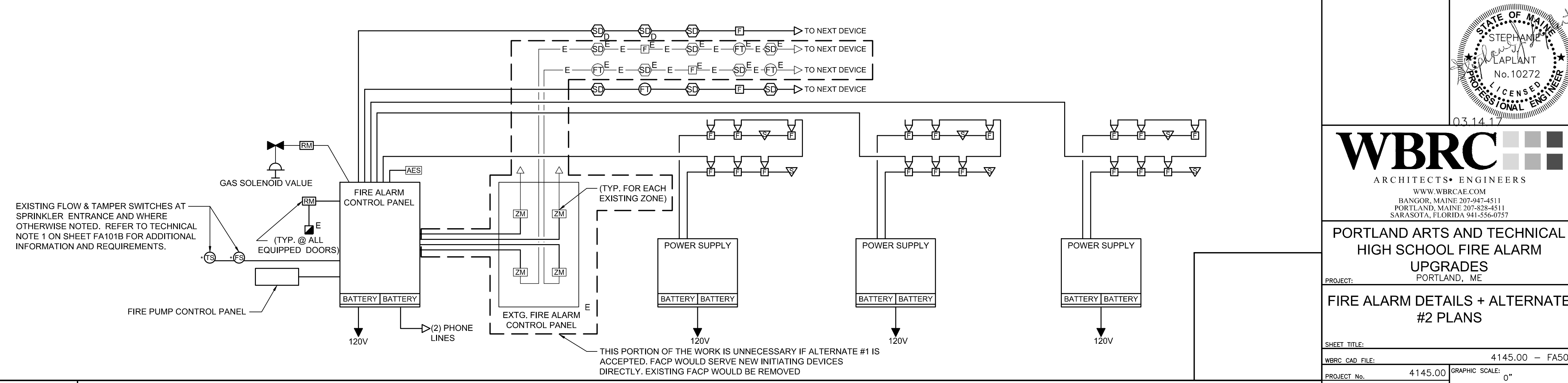
E8 --  
NTS --

E12 --  
NTS --

E15 MOUNTING HEIGHT DETAIL  
NTS --

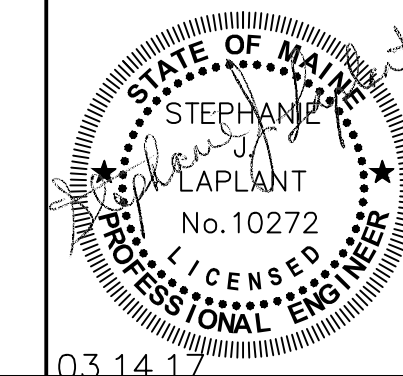


A1 GREEN HOUSE FIRE ALARM PLAN - ALTERNATE #2  
1/8" = 1'-0"



A8 FIRE ALARM RISER DIAGRAM  
NTS --

3/16/2017 3:20 PM T:\02 PROJECTS - MANE\1101-4200\41000 PARTS FIRE ALARM UPGRADES\DESIGN\BUILDINGS FIRE ALARM UPGRADES\DETAILS\DWG 030A\WATERBERG.DWG



**WBRC**  
ARCHITECTS • ENGINEERS  
WWW.WBRC-NE.COM  
BANGOR, MAINE 207-647-4511  
PORTLAND, MAINE 207-628-4511  
SUDBURY, FLORIDA 941-556-0075

PORTLAND ARTS AND TECHNICAL  
HIGH SCHOOL FIRE ALARM  
UPGRADES  
PORTLAND, ME

FIRE ALARM DETAILS + ALTERNATE  
#2 PLANS

SHEET TITLE:	FIRE ALARM DETAILS + ALTERNATE #2 PLANS
WBRC CAD FILE:	4145.00 - FA501
PROJECT No.:	4145.00 GRAPHIC SCALE: 0"
SCALE:	AS NOTED
PROJECT MANAGER:	SJL SHEET No. FA501
DRAWN BY:	DVS
CHECKED BY:	SJL