

GENERAL NOTES:

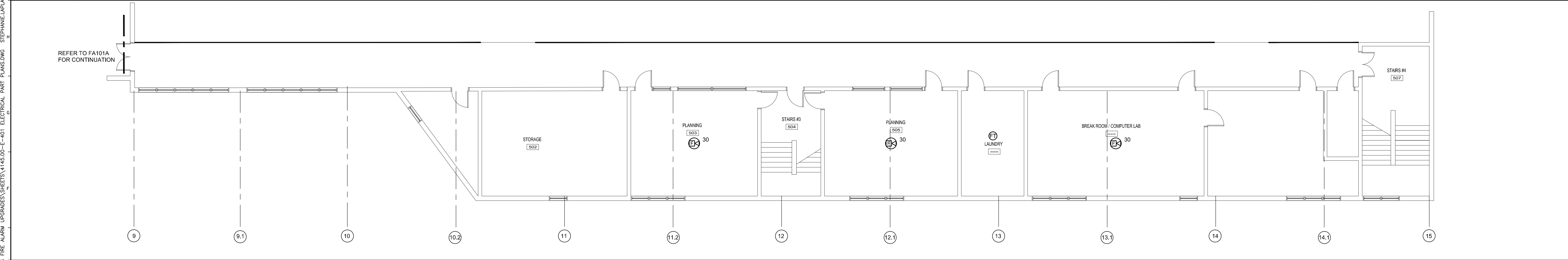
- TO THE EXTENT POSSIBLE, INSTALL FIRE ALARM CABLES IN SPECIFIED UNENCLOSED WIRING METHOD ABOVE ACCESSIBLE CEILINGS.

KEY PLAN

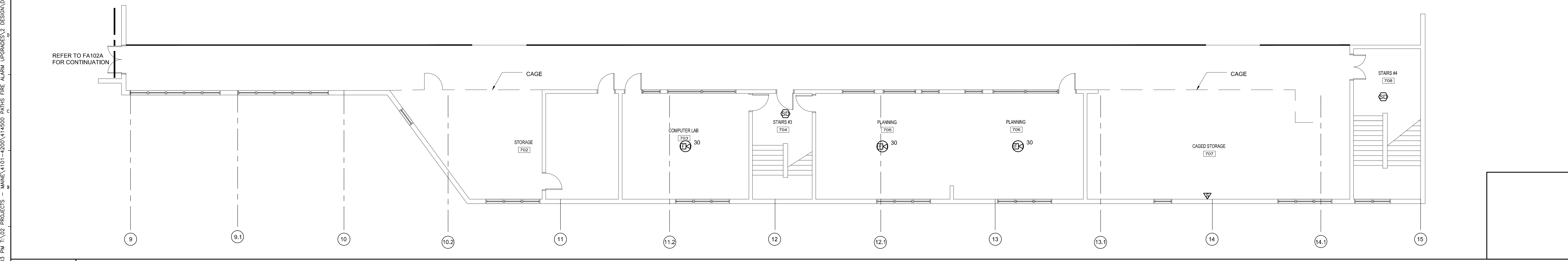
LEGEND:

- E EXISTING TO REMAIN
- ER EXISTING RELOCATED
- NR NEW TO REPLACE EXISTING IN EXISTING LOCATION
- R EXISTING TO BE REMOVED
- RR REMOVE & RELOCATE EXISTING
- HA FIRE ALARM HORN / LIGHT
- MS MULTI-CANDELA STROBE
- MS MULTI-CANDELA HORN/STROBE
- MS CEILING MOUNTED MULTI-CANDELA HORN/STROBE
- MS FIRE ALARM SYSTEM CEILING MOUNTED HEAT DETECTOR - 'EL' FOR ELEVATOR SHUNT TRIP
- MS FIRE ALARM SYSTEM CEILING MOUNTED SMOKE DETECTOR - 'EL' FOR ELEVATOR RECALL
- MS WALL MOUNTED FIRE ALARM SYSTEM MANUAL PULL STATION
- MS KNOX BOX
- MS JUNCTION BOX
- MS DOOR HOLD-OPEN DEVICE CONNECTION
- MS FIRE ALARM SYSTEM/SPRINKLER SYSTEM PRESSURE SWITCH
- MS FIRE ALARM SYSTEM/SPRINKLER SYSTEM FLOW SWITCH
- MS FIRE ALARM SYSTEM/SPRINKLER SYSTEM TAMPER SWITCH
- MS FIRE ALARM SYSTEM DUCT MOUNTED SMOKE DETECTOR
- MS FIRE ALARM SYSTEM CONTROL PANEL
- MS FIRE ALARM ANNUNCIATOR
- MS GAS SHUT-OFF
- MS RADIO TRANSMITTER BOX
- MS MONITOR MODULE
- MS TEST STATION
- MS RELAY MODULE
- MS ANSUL GAS TANK

J1	FIRST FLOOR MEZZ WEST	J3	SECOND FLOOR MEZZANINE NORTH	J13	FIRST FLOOR MEZZ EAST	J16	SECOND FLOOR MEZZ EAST
1/8" = 1'-0"	--	1/8" = 1'-0"	--	1/8" = 1'-0"	--	1/8" = 1'-0"	--



E1	FIRST FLOOR MEZZANINE SOUTH FIRE ALARM PLAN
1/8" = 1'-0"	--



A1	SECOND FLOOR MEZZANINE SOUTH FIRE ALARM PLAN
1/8" = 1'-0"	--

0	ISSUE FOR BID	03.14.17
REV.	DESCRIPTION	DATE

WBRC
ARCHITECTS • ENGINEERS
WWW.WBRC.COM
BANGOR, MAINE 207-647-4511
PORTLAND, MAINE 207-828-4511
SARASOTA, FLORIDA 941-556-0757

PORTLAND ARTS AND TECHNICAL HIGH SCHOOL FIRE ALARM UPGRADES
PORTLAND, ME

FIRE ALARM MEZZANINE BUILDING B PLANS - ALTERNATE #1

SHEET TITLE: 4145.00 - FA401-ABI
WBRC CAD FILE: 4145.00
PROJECT No. 4145.00 GRAPHIC SCALE: 0"
SCALE: AS NOTED
PROJECT MANAGER: S/JL
DRAWN BY: D/VS
CHECKED BY: S/JL

FA401-ABI

3/16/2017 3:03 PM T:\02 PROJECTS - MAINE\101-4200\1-1000-UPGRADES\FIRE ALARM UPGRADES\DESIGN\BUDGET\PARTS FIRE ALARM UPGRADES\SHEETS\4145.00-E-401 ELECTRICAL PART PLANS.DWG STEPHANIE LAPLANT