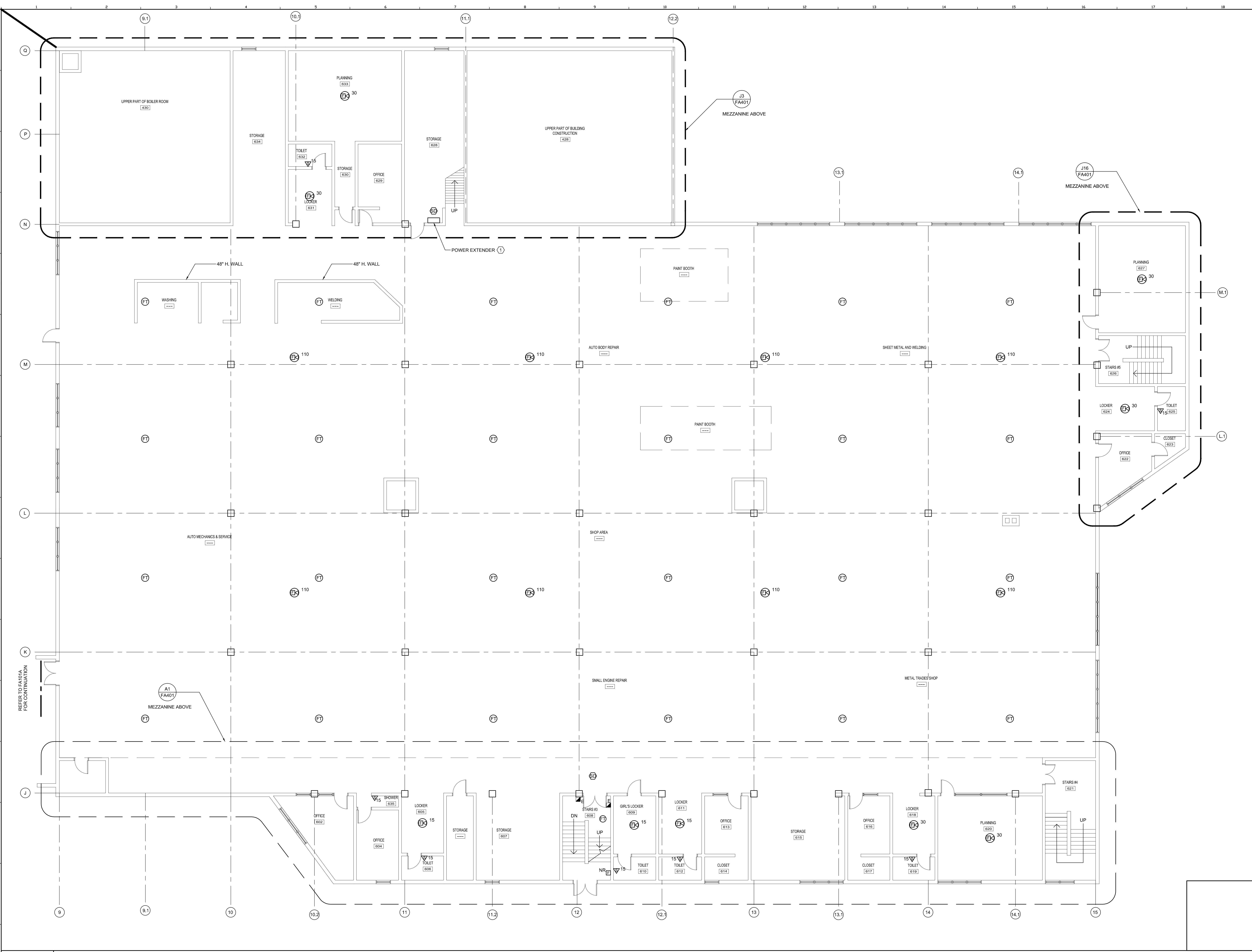
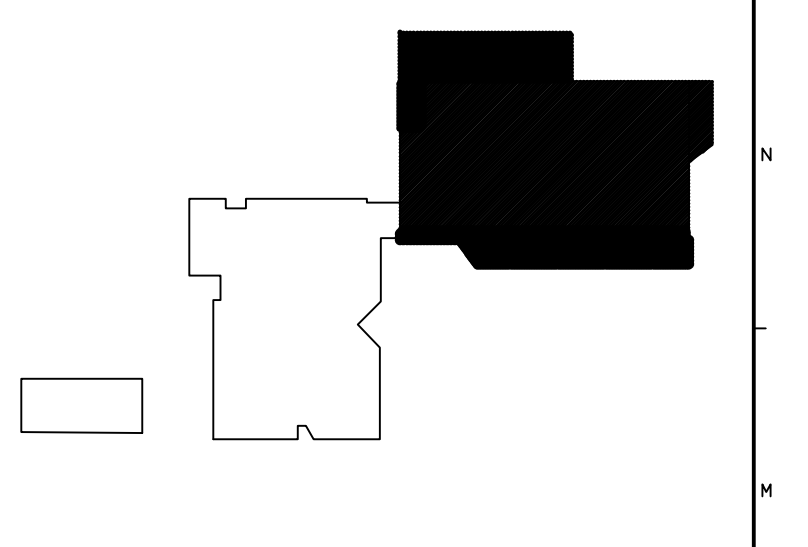


3/16/2017 3:27 PM T:\02 PROJECTS - MAINE\1010-4200\11000-000\11000-000\DESIGN\DWGS\BUILDINGS\FIRE ALARM UPGRADES\1145.00-FA102B-AB1-ALTERNATE #1.DWG DREN/VANSTENBERG/EG



- GENERAL NOTES:**
- TO THE EXTENT POSSIBLE, INSTALL FIRE ALARM CABLES IN SPECIFIED UNENCLOSED WIRING METHOD ABOVE ACCESSIBLE CEILINGS.
- TECHNICAL NOTES:**
- POWER SHALL BE PROVIDED FROM EXISTING ADJACENT PANEL. FIELD COORDINATE EXACT CIRCUIT + PROVIDE 120V, 1P CIRCUIT BREAKER IF REQUIRED.



KEY PLAN

- LEGEND:**
- E EXISTING TO REMAIN
 - FR EXISTING RELOCATED
 - NR NEW TO REPLACE EXISTING IN EXISTING LOCATION
 - R EXISTING TO BE REMOVED
 - RR REMOVE & RELOCATE EXISTING
 - HA FIRE ALARM HORN / LIGHT
 - MS MULTI-CANDELA STROBE
 - MHS MULTI-CANDELA HORN/STROBE
 - ECM CEILING MOUNTED MULTI-CANDELA HORN/STROBE
 - FT FIRE ALARM SYSTEM CEILING MOUNTED HEAT DETECTOR - 'EL' FOR ELEVATOR SHUNT TRIP
 - ELT FIRE ALARM SYSTEM CEILING MOUNTED SMOKE DETECTOR - 'EL' FOR ELEVATOR RECALL
 - MPS WALL MOUNTED FIRE ALARM SYSTEM MANUAL PULL STATION
 - KB KNOX BOX
 - JO JUNCTION BOX
 - DOOR DOOR HOLD-OPEN DEVICE CONNECTION
 - PS FIRE ALARM SYSTEM/SPRINKLER SYSTEM PRESSURE SWITCH
 - FS FIRE ALARM SYSTEM/SPRINKLER SYSTEM FLOW SWITCH
 - TS FIRE ALARM SYSTEM/SPRINKLER SYSTEM TAMPER SWITCH
 - DM FIRE ALARM SYSTEM DUCT MOUNTED SMOKE DETECTOR
 - FCAP FIRE ALARM SYSTEM CONTROL PANEL
 - FAA FIRE ALARM ANNUNCIATOR
 - GS GAS SHUT-OFF
 - RTB RADIO TRANSMITTER BOX
 - MM MONITOR MODULE
 - TS TEST STATION
 - RM RELAY MODULE
 - AT ANSUL GAS TANK

REV.	DESCRIPTION	DATE
0	ISSUE FOR BID	03.14.17

PROJECT NORTH

WBRC
ARCHITECTS • ENGINEERS
WWW.WBRC.COM
BANGOR, MAINE 207-647-4511
PORTLAND, MAINE 207-838-4511
SARASOTA, FLORIDA 941-556-0075

PORTLAND ARTS AND TECHNICAL HIGH SCHOOL FIRE ALARM UPGRADES
PORTLAND, ME

SECOND FLOOR FIRE ALARM BUILDING B PLAN - ALTERNATE #1

A1	SECOND FLOOR FIRE ALARM BUILDING B PLAN - ALTERNATE #1
1/8" = 1'-0"	--

SHEET TITLE:	4145.00 - FA102B-ABI
PROJECT No.:	4145.00 GRAPHIC SCALE: 0"
SCALE:	AS NOTED
PROJECT MANAGER:	S/JL
DRAWN BY:	D/S
CHECKED BY:	S/JL