

6

5

4

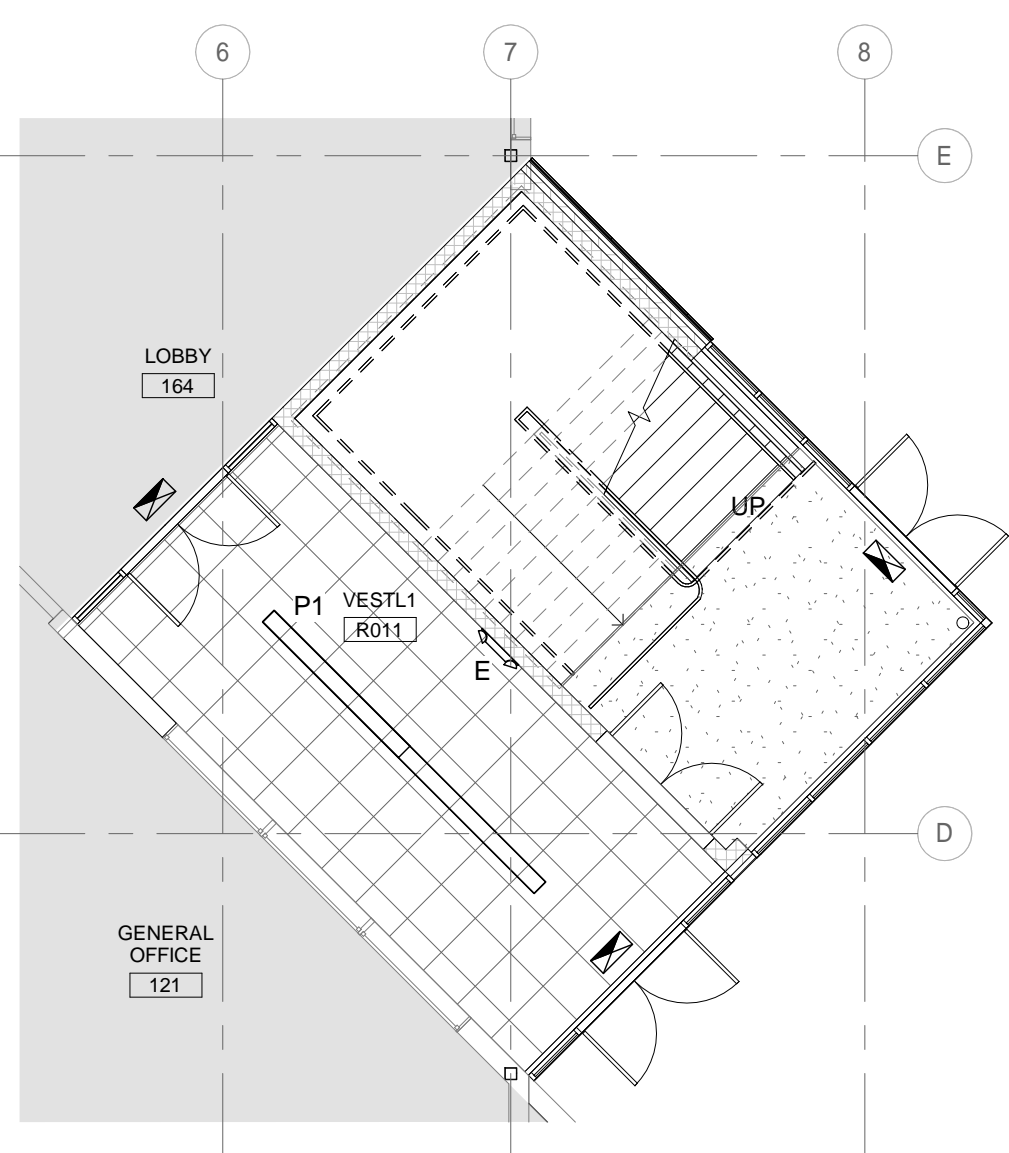
3

2

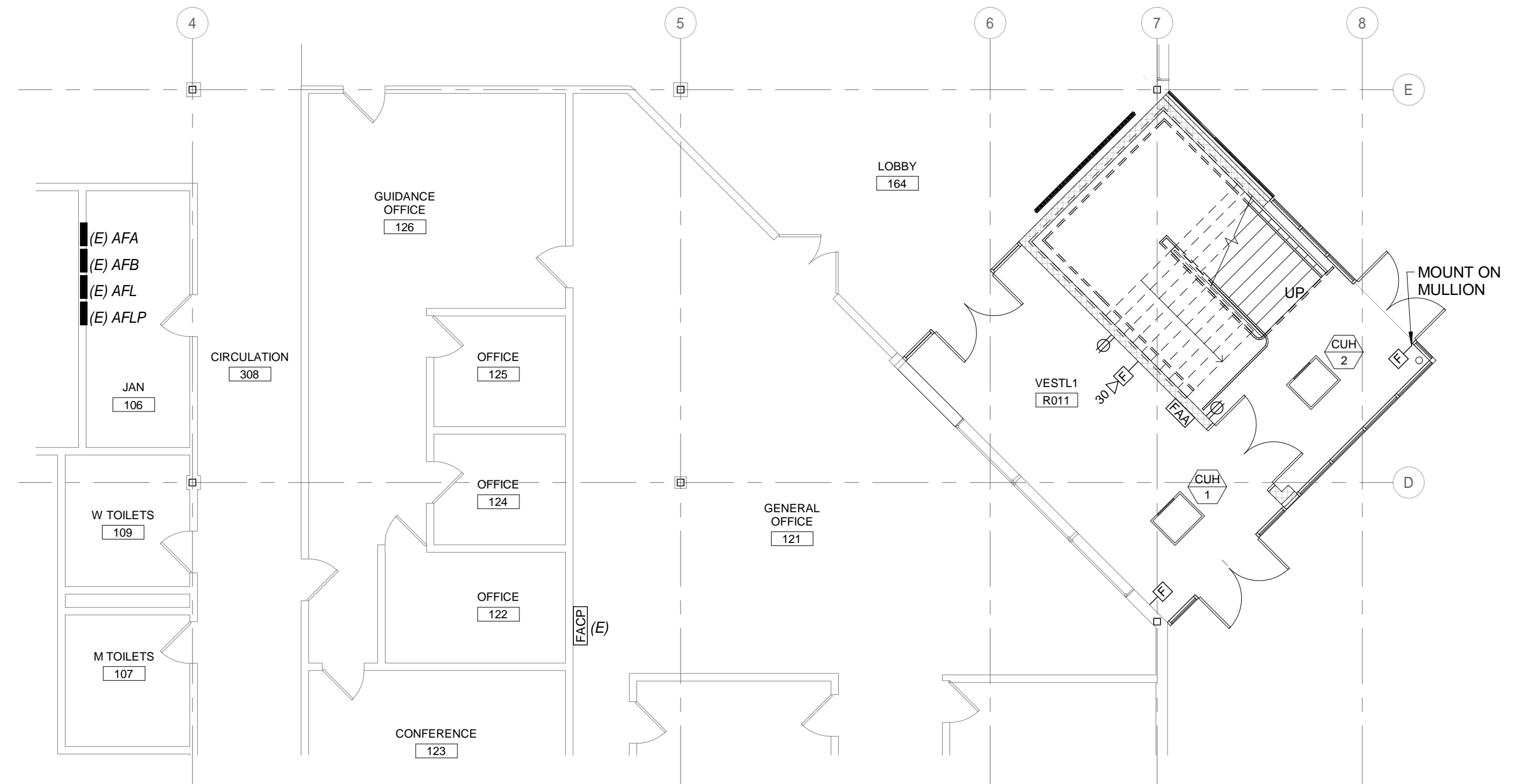
1

- ① PROVIDE 30KVA TRANSFORMER. FEED FROM ASL OR ASP. PROVIDE 3P, 50A CIRCUIT BREAKER.
- ② PROVIDE 100A 208/120V PANEL ASX FED FROM TRANSFORMER.

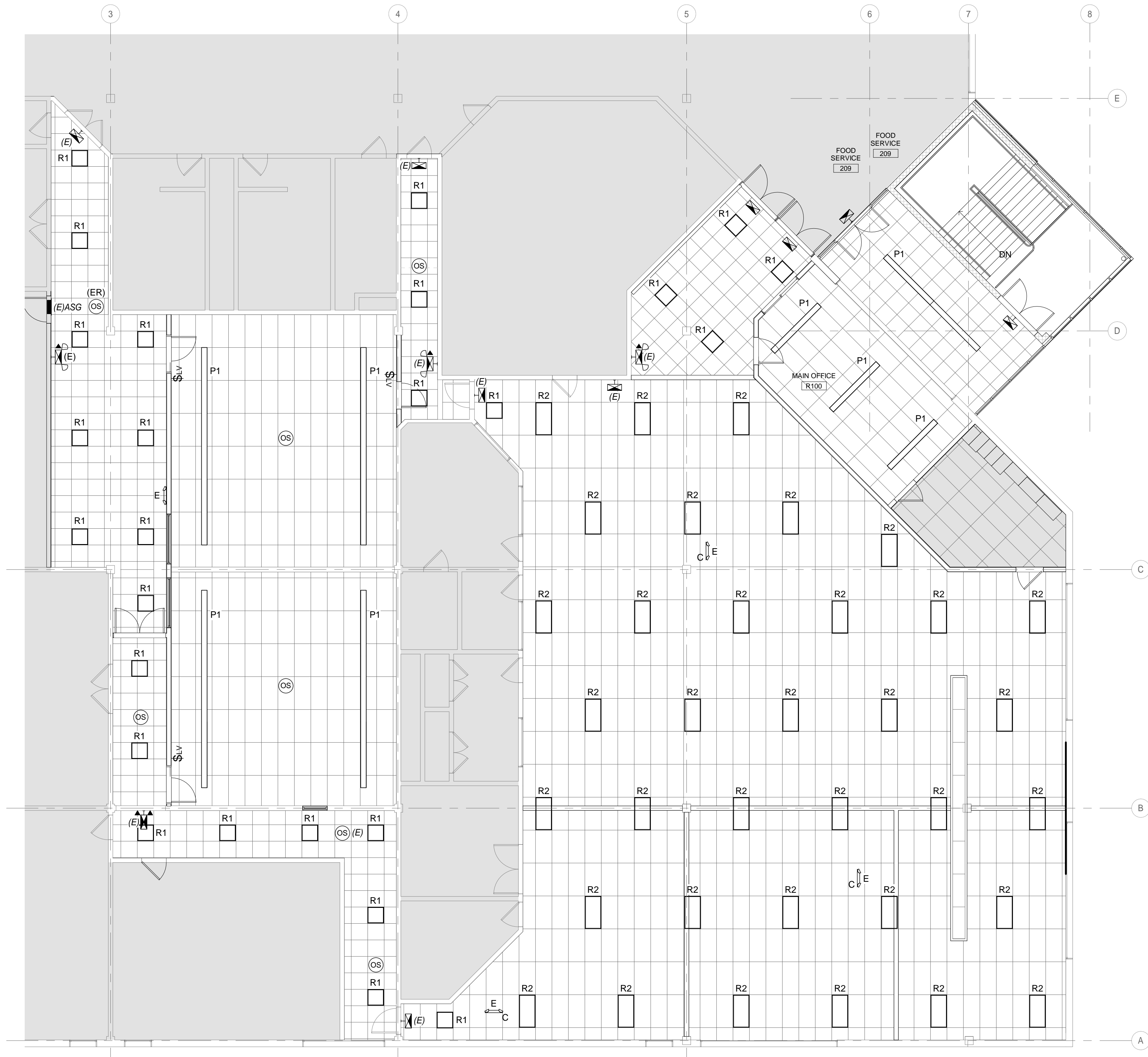
E5 KEY NOTES



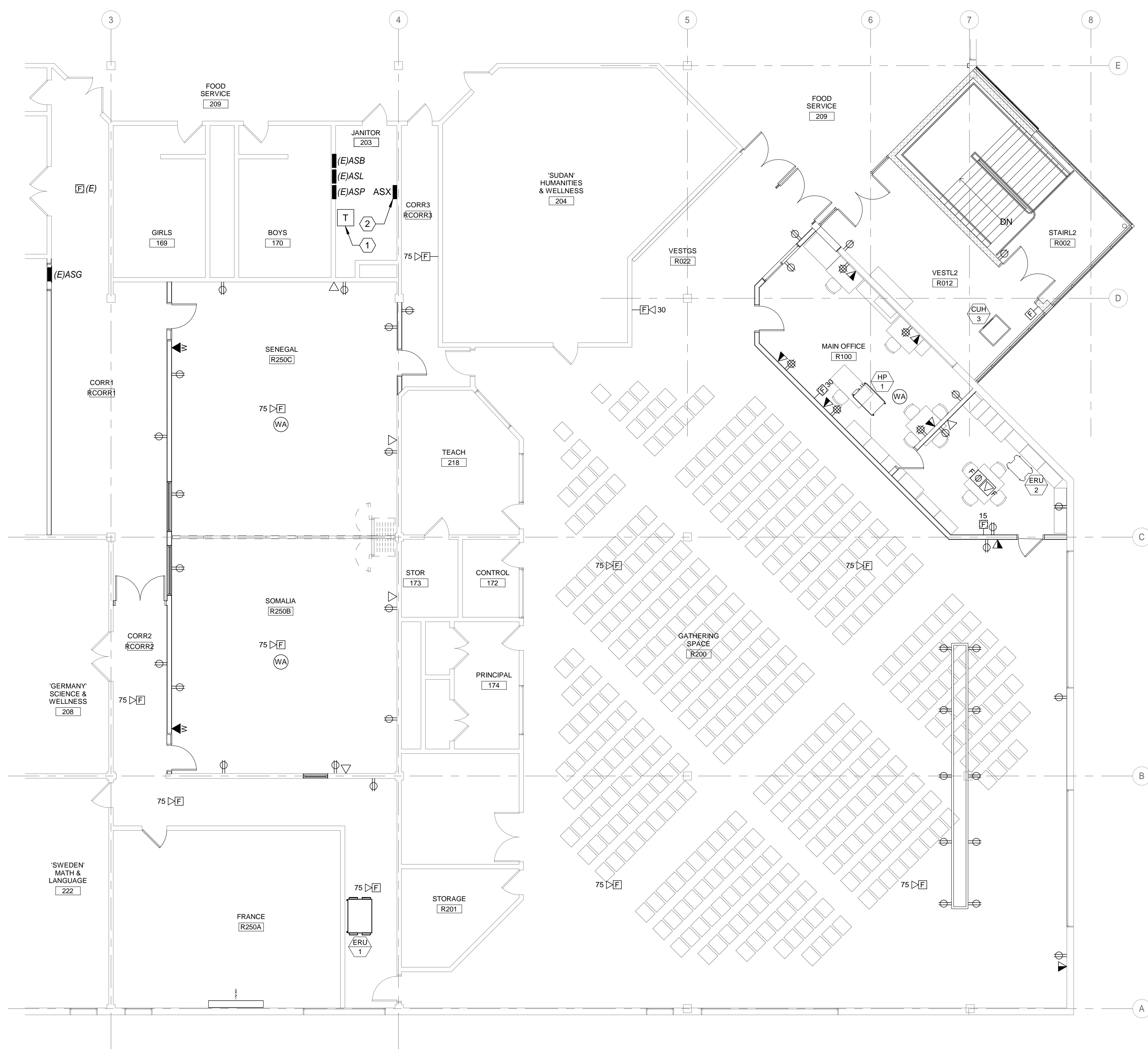
D4 LEVEL 1 LIGHTING PLAN
1/8" = 1'-0"



D3 LEVEL 1 POWER AND SYSTEMS PLAN
1/8" = 1'-0"



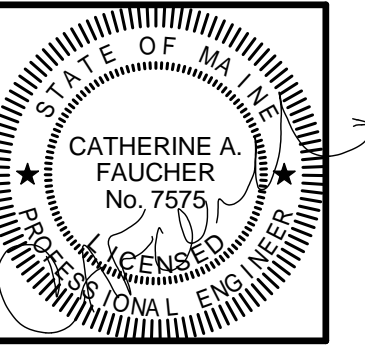
A6 LEVEL 2 LIGHTING PLAN
1/8" = 1'-0"



A3 LEVEL 2 POWER AND SYSTEMS PLAN
1/8" = 1'-0"

CASCO BAY HIGH SCHOOL- RENOVATIONS
196 Allen Avenue
Portland, ME

No.	Date	Description
1		Revision Schedule



JOB NO. 17056

DRWN. CHK SRM

SCALE: As indicated

ISSUE Permitting Set 19 February 2018

TITLE ELECTRICAL PLANS

SHEET

E101