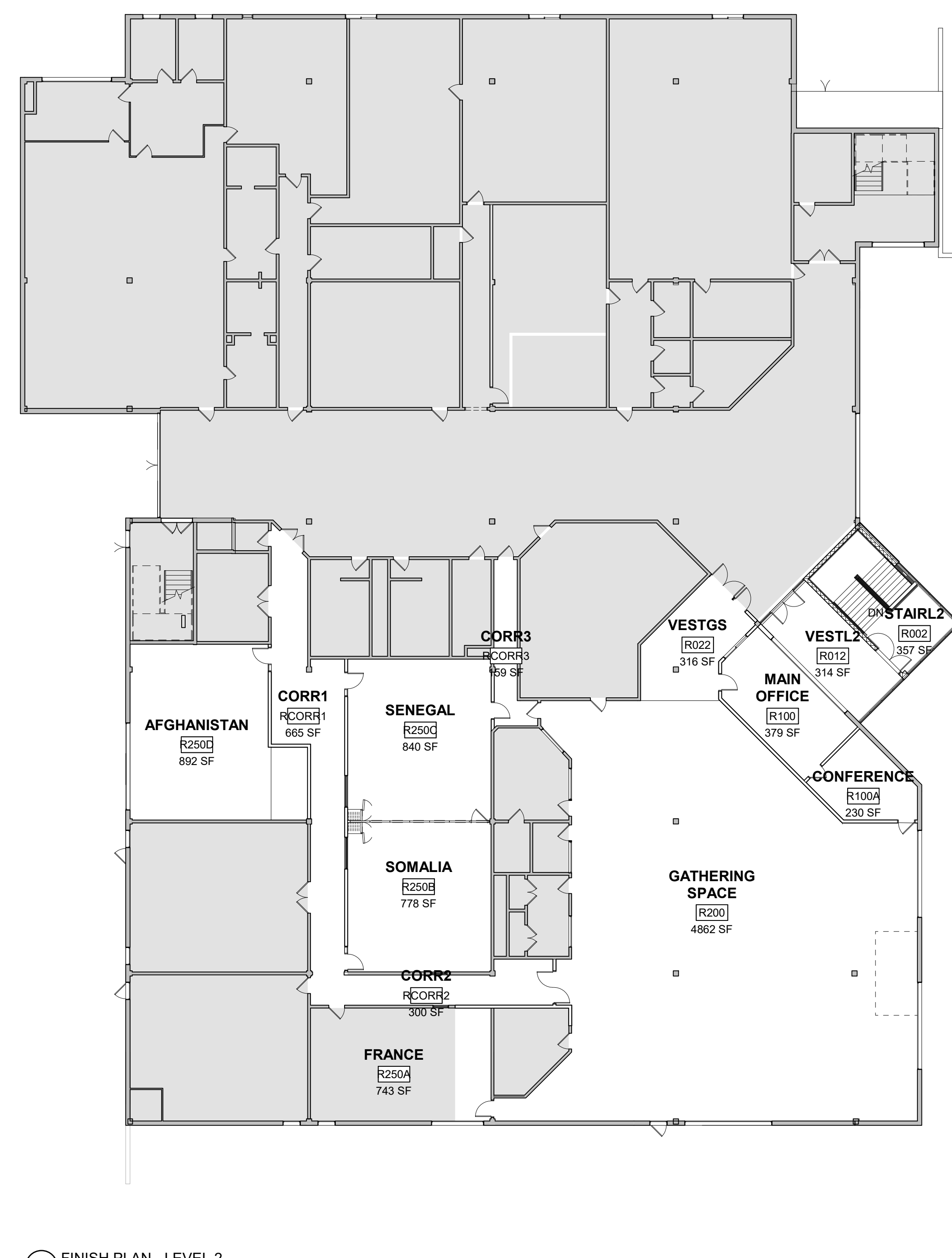
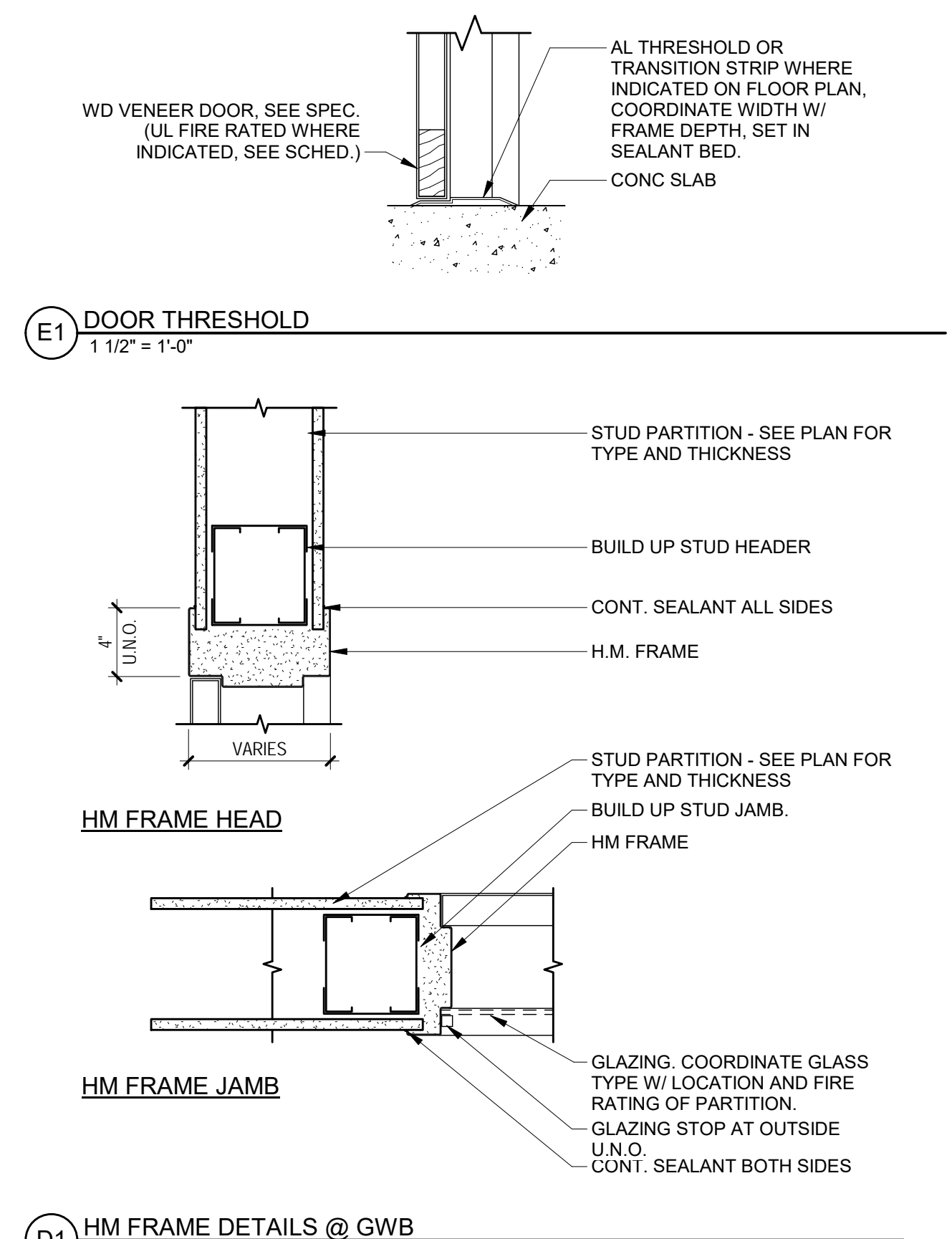
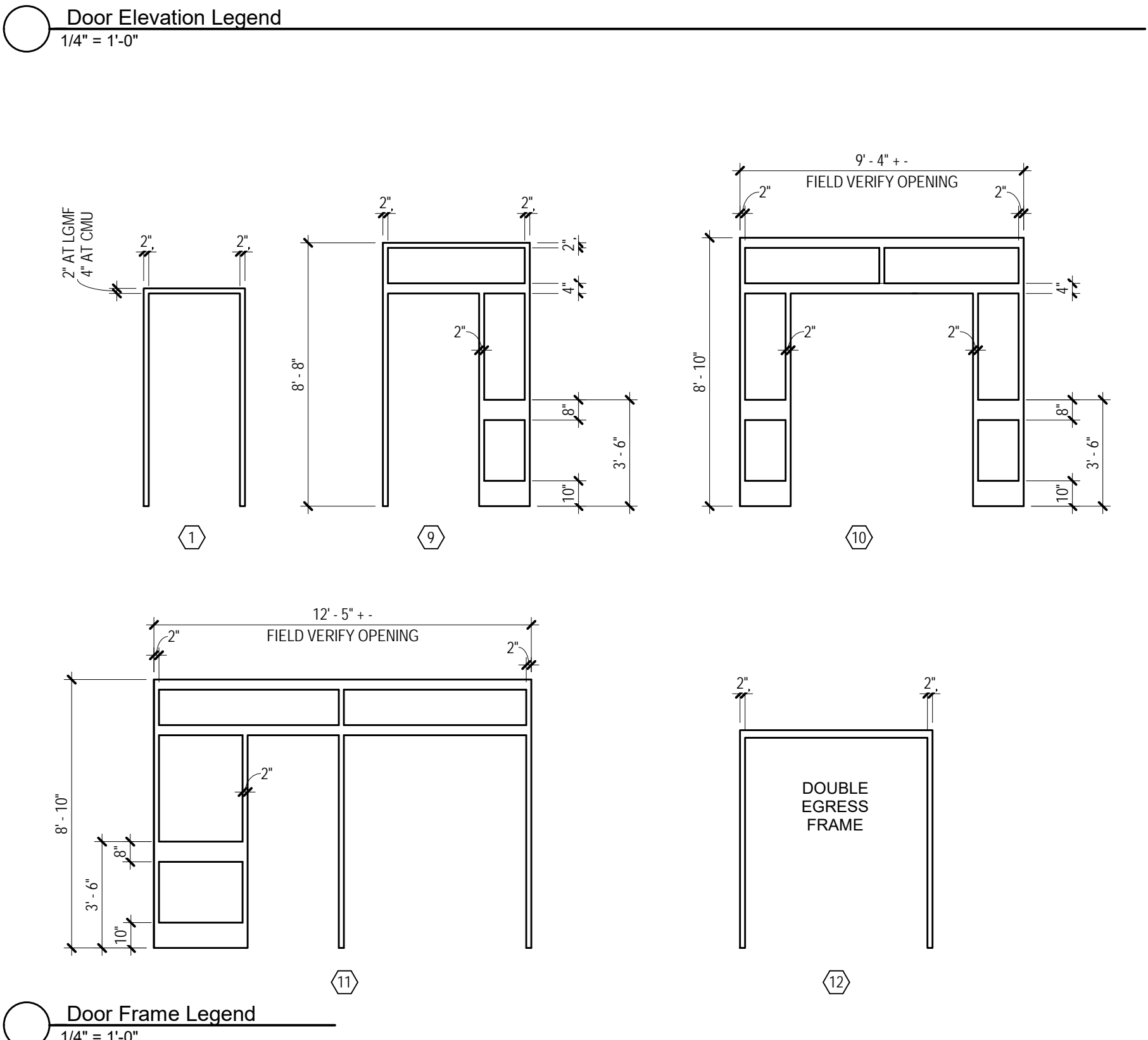
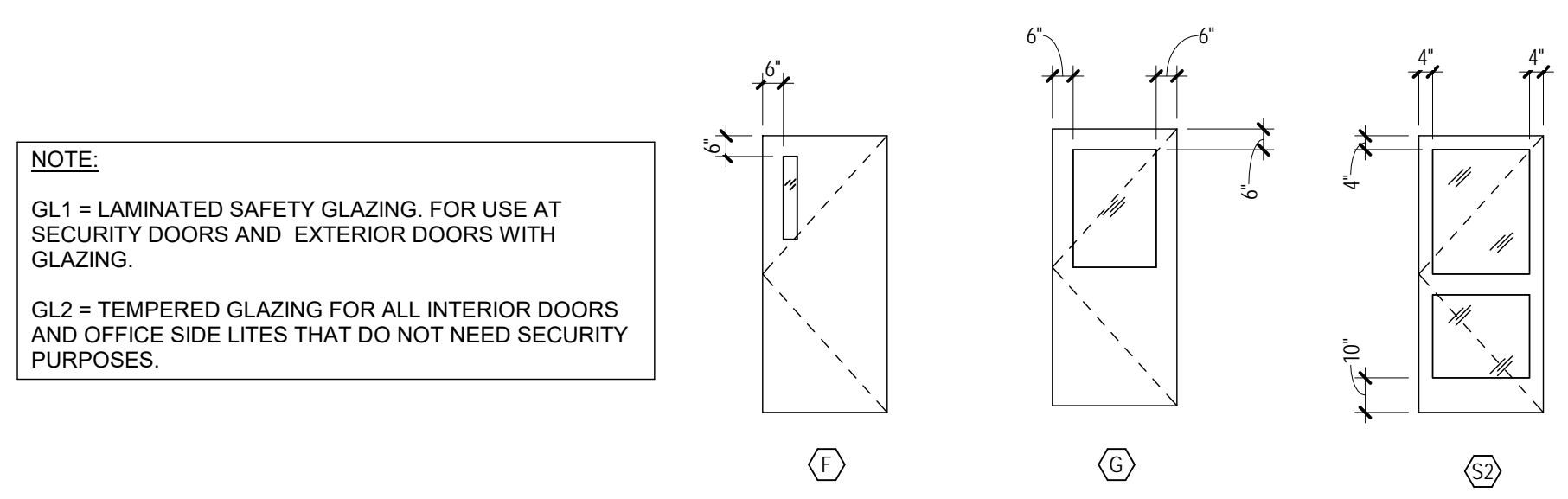


Door & Frame Schedule										
MARK	ROOM NO.	ROOM NAME	OPENING		DOOR		FRAME		HDWR	COMMENTS
			WIDTH	HEIGHT	PANEL TYPE	MATL	TYPE	MATL		
001.1	R001	STAIRL1	6'-0"	7'-0"	S2	Alum	--	Alum		Aluminum Entrance; Security Glazing
011.1	R011	VESTL1	6'-0"	7'-0"	S2	Alum	--	Alum	1	Aluminum Entrance; Security Glazing
011.2	R001	STAIRL1	6'-0"	7'-0"	F	STL	1	HM	60	2
011.3	R011	VESTL1	6'-0"	7'-0"	S2	STL	10	HM		3
012.1	R012	VESTL2	6'-0"	7'-0"	S2	STL	10	HM		3
012.2	R002	STAIRL2	6'-0"	7'-0"	F	STL	1	HM	60	2
022.1	R022	VESTGS	6'-0"	7'-0"	G	WD	11	HM		4
022.2	R022	VESTGS	3'-0"	7'-0"	G	WD	11	HM		5
100.1	R100	MAIN OFFICE	3'-0"	7'-0"	F	WD	1	HM		6
100.2	R100A	CONFERENCE	3'-0"	7'-0"	F	WD	1	HM		7
100.3	R100A	CONFERENCE	3'-0"	7'-0"	F	WD	1	HM		6
200.5	R200	GATHERING SPACE	6'-0"	7'-0"	G	WD	12	HM	SMOKE	8
200.6	RCORR3	CORR3	3'-0"	7'-0"		WD	1A	HM		EXISTING; Hardware to be Replaced
231.1	R231	CANADA	3'-0"	7'-0"	F	WD	1	HM	SMOKE	9
231.2	RCORR4	COORR4	3'-0"	7'-0"	F	WD	1	HM	SMOKE	9
250A.1	R250A	FRANCE	3'-0"	7'-0"	F	WD		HM		EXISTING; Hardware to be Replaced
250A.2	R250A	FRANCE	3'-0"	7'-0"	F	WD		HM		EXISTING; Hardware to be Replaced
250B.1	R250B	SOMALIA	3'-0"	7'-0"	G	WD	9	HM	SMOKE	9
250C.1	R250C	SENEGAL	3'-0"	7'-0"	G	WD	9	HM	SMOKE	9
250C.2	RCORR3	CORR3	3'-0"	7'-0"	F	WD	1	HM	SMOKE	9
250D.1	R250D	AFGHANISTAN	3'-0"	7'-0"	G	WD	1	HM	SMOKE	9
260.1	RCORR3	CORR3	3'-0"	7'-0"		MTL		HM		EXISTING; Hardware to be Replaced
260.2	RCORR1	CORR1	6'-0"	7'-0"		MTL		HM		EXISTING; Hardware to be Replaced

Door Hardware Notes:
 ADA-compliant aluminum thresholds will be provided at all exterior doors.
 ADA-compliant lever handles will be provided at all new interior doors.
 ADA-compliant pulls will be provided at main entrance door 011.1.
 Exit devices will be provided on the push side of new doors:
 • 001.1
 • 011.1
 • 011.2
 • 011.3
 • 012.1
 • 012.2
 • 022.1
 • 022.2
 • 200.5
 Exit devices will be provided on the push side of existing doors XXX and XXX.

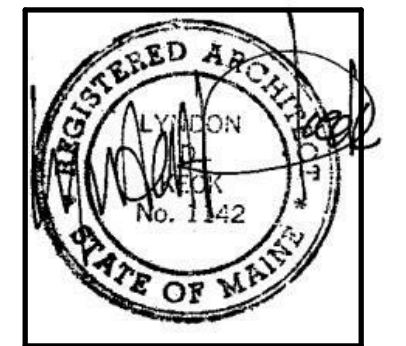
- Hardware Set 4**
 6 Hinge (heavy weight) TA786 4-1/2" x 4-1/2" US26D MK
 1 KR Mullion L9805 FC SA
 1 KR Mullion Cylinder Kit 64 980C1 US26D SA
 2 Rim Exit (intruder) 16 64 8816 ETJ US32D SA
 7 LFRC Permanent Core DG1 6300 US15 SA
 2 Surface Closer (stop/hold open) 351 CPSH EN SA
 2 Kick Plate K1050 8" 4BE CSK US32D RO
 1 Perimeter Gasket S88 PE
 1 Mullion Gasket 5110 PE
 1 Astragal S772C PE
- Hardware Set 5**
 3 Hinge (heavy weight) TA786 4-1/2" x 4-1/2" US26D MK
 1 Rim Exit (intruder) 16 64 8816 ETJ US32D SA
 3 LFRC Permanent Core DG1 6300 US15 SA
 1 Surface Closer (stop/hold open) 351 CPSH EN SA
 1 Kick Plate K1050 8" 4BE CSK US32D RO
 1 Perimeter Gasket S88 PE
- Hardware Set 7**
 3 Hinge (heavy weight) TA786 4-1/2" x 4-1/2" US26D MK
 1 Mortise Lock (intruder) 64 8238 LNJ US32D SA
 2 LFRC Permanent Core DG1 6300 US15 SA
 1 Surface OH Stop 9-X36 652 RF SA
 1 Kick Plate K1050 8" 4BE CSK US32D RO
- Hardware Set 6**
 3 Hinge (heavy weight) TA786 4-1/2" x 4-1/2" US26D MK
 1 Mortise Lock (intruder) 64 8238 LNJ US32D SA
 2 LFRC Permanent Core DG1 6300 US15 SA
 1 Surface Closer (holder) 351 H/PH10 EN SA
 1 Kick Plate K1050 8" 4BE CSK US32D RO
 1 Wall Stop (convex) 401 US26D RO
 1 Perimeter Gasket S88 PE
- Hardware Set 2**
 6 Hinge (heavy weight) TA786 4-1/2" x 4-1/2" US26D MK
 1 SVR Exit (passage) 12 NB8715 ETJ US32D SA
 2 Surface Closer 351 OP10 EN SA
 2 Kick Plate K1050 8" 4BE CSK US32D RO
 2 Wall Stop (convex) 401 US26D RO
 1 Perimeter Gasket S88 PE
 1 Astragal S77C PE
- Hardware Set 9**
 3 Hinge (heavy weight) TA786 4-1/2" x 4-1/2" US26D MK
 1 Mortise Lock (intruder) 64 8238 LNJ US32D SA
 2 LFRC Permanent Core DG1 6300 US15 SA
 1 Kick Plate K1050 8" 4BE CSK US32D RO
 1 Wall Stop (convex) 401 US26D RO
 1 Perimeter Gasket S88 PE



Room Finish Schedule									
NUMBER	ROOM NAME	Finish Style (Hide)	FLOOR	BASE MATL	WALLS				NOTES
					N	S	E	W	
R250B	SOMALIA	(none)							
R100	MAIN OFFICE	(none)							
R022	VESTGS	(none)							
RCORR1	CORR1	(none)							
R250C	SENEGAL	(none)							
RCORR3	CORR3	(none)							
RCORR2	CORR2	(none)							
R011	VESTL1	(none)							
R200	GATHERING SPACE	(none)							
R012	VESTL2	(none)							
R002	STAIRL2	(none)							
R001	STAIRL1	(none)							
R003	NURSE	(none)							
R250D	AFGHANISTAN HUMANITIES	(none)							
R250D	AFGHANISTAN	(none)							
R250A	FRANCE	(none)							
R201	STORAGE	(none)							
R100A	CONFERENCE	(none)							
R100B	STAIRS	(none)							
R231	CANADA	(none)							
RCORR4	COORR4	(none)							
R233	C	(none)							
R100C	SENEGAL	(none)							
RCORR2	CORR2	(none)							

- FINISH KEY:**
- | | | | |
|-----|------------------------|-------|------------------|
| WP | WOOD PANEL | SCONC | SEALED CONCRETE |
| PT | PORCELAIN TILE | WD | WOOD |
| CWT | CERAMIC WALL TILE | TB | TACKBOARD |
| CPT | CARPET | TS | TRANSITION STRIP |
| MAT | ENTRY MAT | SS | SOLID SURFACE |
| IRP | IMPACT RESISTANT PANEL | RB | RUBBER BASE |
| VWC | VINYL WALLCOVERING | G | GROUT |
| P | PAINT | PLAM | PLASTIC LAMINATE |
| VP | VINYL PLANK | MP | METAL PANEL |
- REFER TO ELEVATIONS FOR MATERIAL LOCATIONS AND ACCESSORIES.
 - REFER TO FINISH PLAN SHEET A800 FOR FLOOR PATTERNS & FLOOR MATERIAL TRANSITIONS.
 - TILE MEMBRANE USED IN CONJUNCTION WITH FLOOR TILE (PT) INSTALL; SEE SPEC.
 - IRP PANELS AS SHOWN ON ELEVATIONS AND AROUND ALL SIDES OF MOP SINK TO 8'-0" AFF. UNO.
 - SOLID SURFACE AT COUNTERTOPS, SEE ELEVATIONS.
 - ACCENT WALL IMPLIES FLOOR TO CEILING, WALL TO WALL, COMPLETE COVERAGE.
 - ALL INTERIOR DOORS AND HOLLOW METAL FRAMES TO BE PAINTED P-2, UNO.
 - NOT USED
 - EXTERIOR WINDOW CASINGS TO BE PAINTED P-2, UNO.
 - INTERIOR FINISH TO BE PAINTED AND FIRE TAPPED PLYWOOD FOR MOUNTING.
 - ADD EXTRA LAYER OF FIRE-RATED GYP ON INTERIOR SIDE OF EXTERIOR WALL FOR RATING.

No.	Date	Description



JOB NO.
17056

DRWN. CHK
Checker

SCALE:

ISSUE
02/19/2018

TITLE
Finish and Door Schedule

SHEET

A500