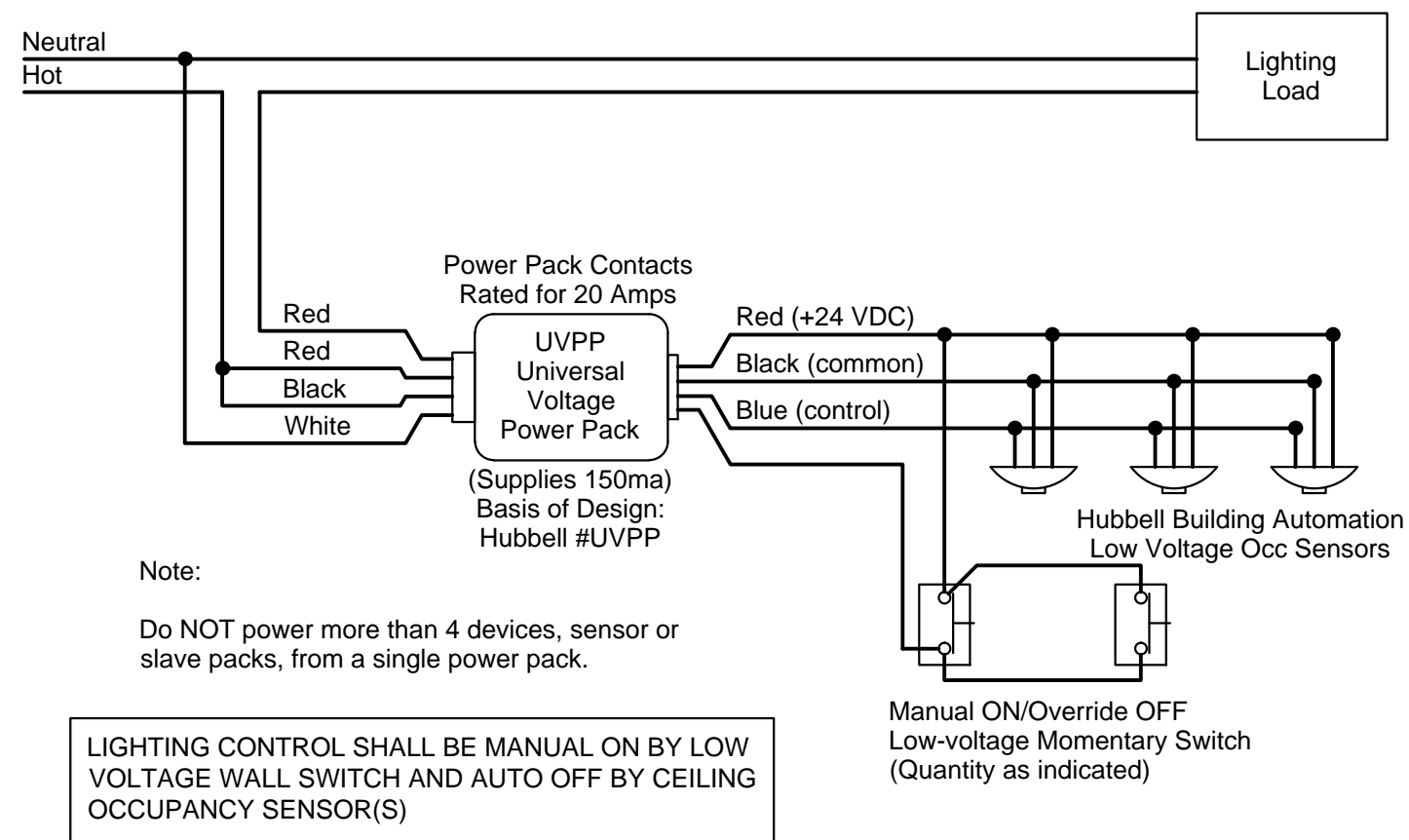


- REFER TO FLOOR PLANS FOR SCOPE OF WORK AREA. REFER TO ARCHITECTURAL AND MECHANICAL DRAWINGS FOR THE ADDITIONAL DEMOLITION SCOPE OF WORK.
- COMPLETELY DEMOLISH ALL ELECTRICAL DEVICES WITHIN DEMOLITION AREA, UNLESS NOTED OR INDICATED OTHERWISE. DEMOLITION SHALL INCLUDE BUT NOT BE LIMITED TO WIRING DEVICES, OUTLET BOXES, PULL BOXES, LIGHTING FIXTURES AND SWITCHES, WIRING AND CONDUIT, TELECOMMUNICATIONS, ETC.
- IN GENERAL, ONLY EXISTING ITEMS TO REMAIN OR BE RELOCATED ARE INDICATED ON THE DRAWINGS. SWITCHBOARDS AND PANELBOARDS TO BE REMOVED ARE INDICATED FOR INFORMATIONAL PURPOSES, BUT THE DRAWINGS ARE NOT INTENDED TO INDICATE ALL SWITCHBOARDS OR PANELBOARDS TO BE REMOVED.
- DISCONNECT AND REMOVE ALL WIRING FOR EQUIPMENT TO BE REMOVED BACK TO THE POINT OF CONNECTION. NOTHING SHALL BE ABANDONED IN PLACE.
- VERIFY ALL EXISTING SOURCES OF POWER TO EQUIPMENT PRIOR TO FINAL REMOVAL.
- COORDINATE ALL SHUTDOWN PROCEDURES WITH THE OWNER PRIOR TO DISCONNECTING ANY CIRCUITS.
- PROVIDE BLANK COVER PLATES FOR REMOVED POWER AND COMMUNICATIONS OUTLETS IN EXISTING WALLS TO REMAIN.
- THE DEMOLITION FLOOR PLANS ARE REPRESENTATIVE AND DO NOT SHOW ALL EXISTING WALLS AND EQUIPMENT.
- WHERE DEMOLITION IMPACTS WIRING TO EXISTING ITEMS TO REMAIN, PROVIDE WIRING AND CONNECTIONS AS REQUIRED TO RE-FEED ITEMS TO REMAIN.
- THE WORK INCLUDES DISPOSAL OF ALL REMOVED ELECTRICAL ITEMS INCLUDING BALLASTS, LAMPS, THERMOSTATS, OIL-IMMERSED SWITCHES AND OIL-FILLED TRANSFORMERS. LEGALLY DISPOSE OF ALL HAZARDOUS MATERIALS.



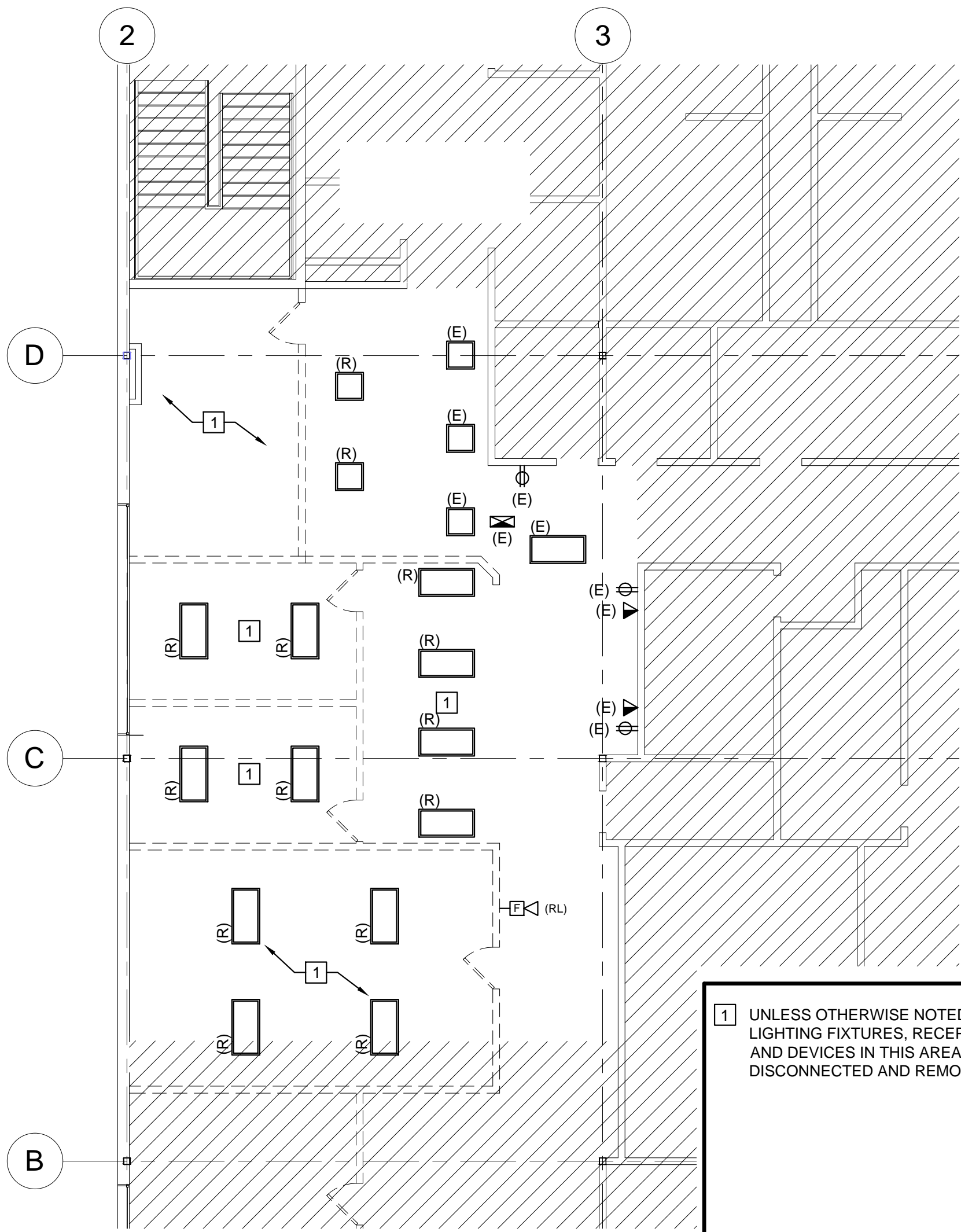
NOTE: THIS DETAIL IS FOR REFERENCE ONLY. LIGHTING SWITCHES, SENSORS, AND DEVICES SHALL MATCH WITH PORTLAND PUBLIC SCHOOL'S STANDARDS.

LUMINAIRE SCHEDULE									
TYPE	DESCRIPTION	MFR	CATALOG SERIES NUMBER	MOUNTING	VOLTS	QTY PER FIXTURE	WATTS	LAMP TYPE	KEY NOTES
F3	2'x4' VOLUMETRIC LAY-IN	LITHONIA	ZRTS-2-32-MVOLT	LAY-IN	277	2	32	T8 3500K	7
X	LED EXIT SIGN WITH BATTERY	LITHONIA	LQM-P-W-R-120/277	UNIVERSAL	120/277			LED	3
NOTES									
1 NOTE THAT THESE NUMBERS ARE NOT COMPLETE CATALOG #'S. PROVIDE ALL REQUIREMENTS ON SCHEDULE, NOTES, SPECS, AND DRAWINGS COMBINED.									
2 CATALOG SERIES NUMBERS ARE USED TO ESTABLISH A LEVEL OF QUALITY AND NOT INTENDED TO LIMIT COMPETITION. SERIES NUMBERS ARE NOT COMPLETE CATALOG NUMBERS. COMPLY WITH ADDITIONAL REQUIREMENTS IN SPECIFICATIONS AND DRAWINGS.									
3 PROVIDE WALL/CEILING, OR PENDANT MOUNTING AS INDICATED ON PLANS. PROVIDE NUMBER OF FACES AND ARROWS AS INDICATED.									
4 PROVIDE PROGRAMMED START BALLAST WITH ROOMS THAT HAVE OCCUPANCY SENSORS.									
5 VERIFY CEILING STRUCTURE AND MOUNTING HEIGHT PRIOR TO ORDERING ANY LIGHT FIXTURES.									
6 EXISTING LIGHTING FIXTURE TO BE RE-USED. CLEAN FIXTURE AND REPLACE WITH NEW LAMPS. LAMP COLOR TEMPERATURE TO BE VERIFIED TO MATCH WITH EXISTING.									
7 FIELD VERIFY LAMP COLOR TEMPERATURE TO MATCH WITH EXISTING.									

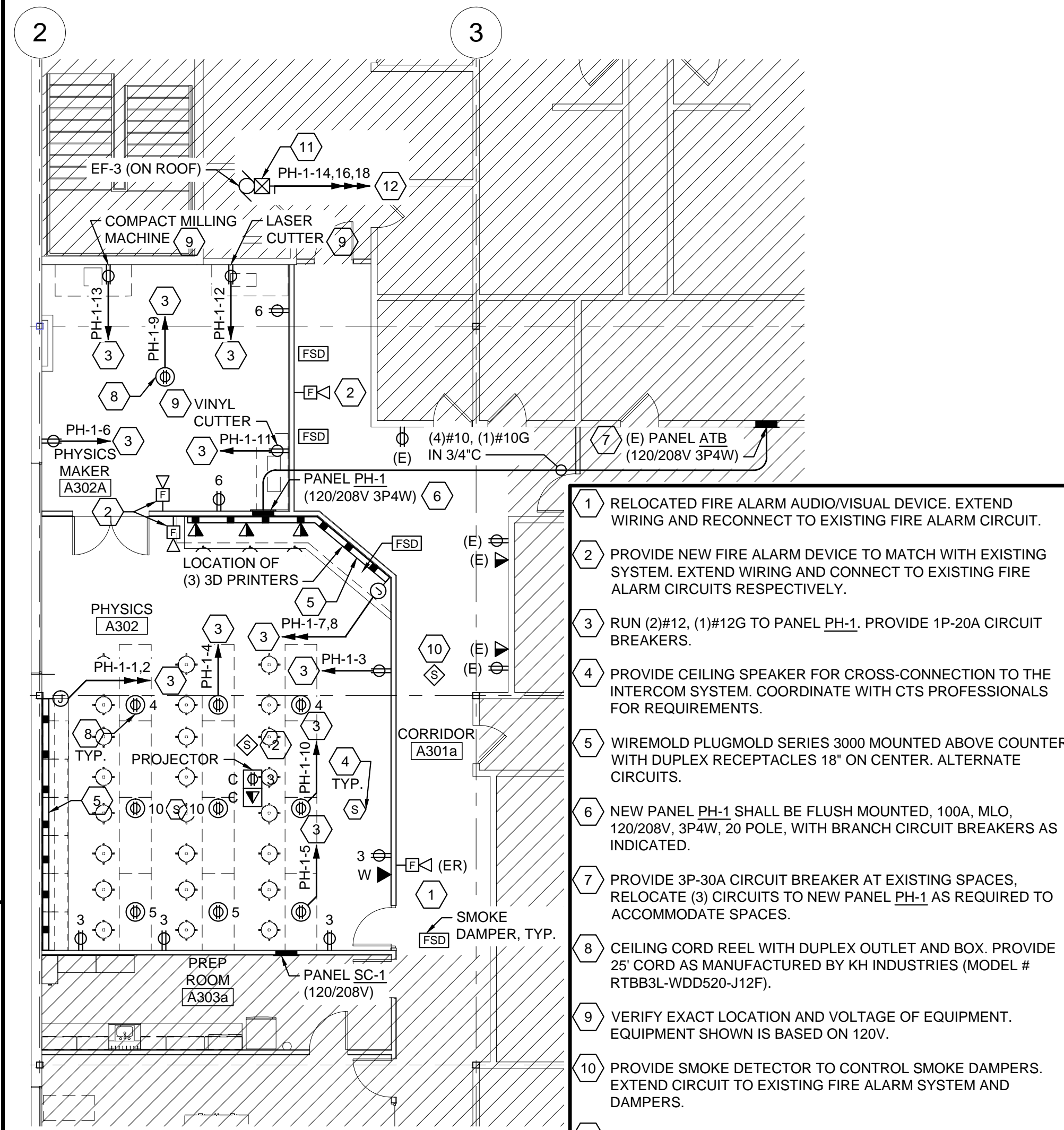
E1 DEMOLITION GENERAL NOTES

E4 LIGHTING CONTROL DETAIL- MANUAL ON WITH AUTO OFF

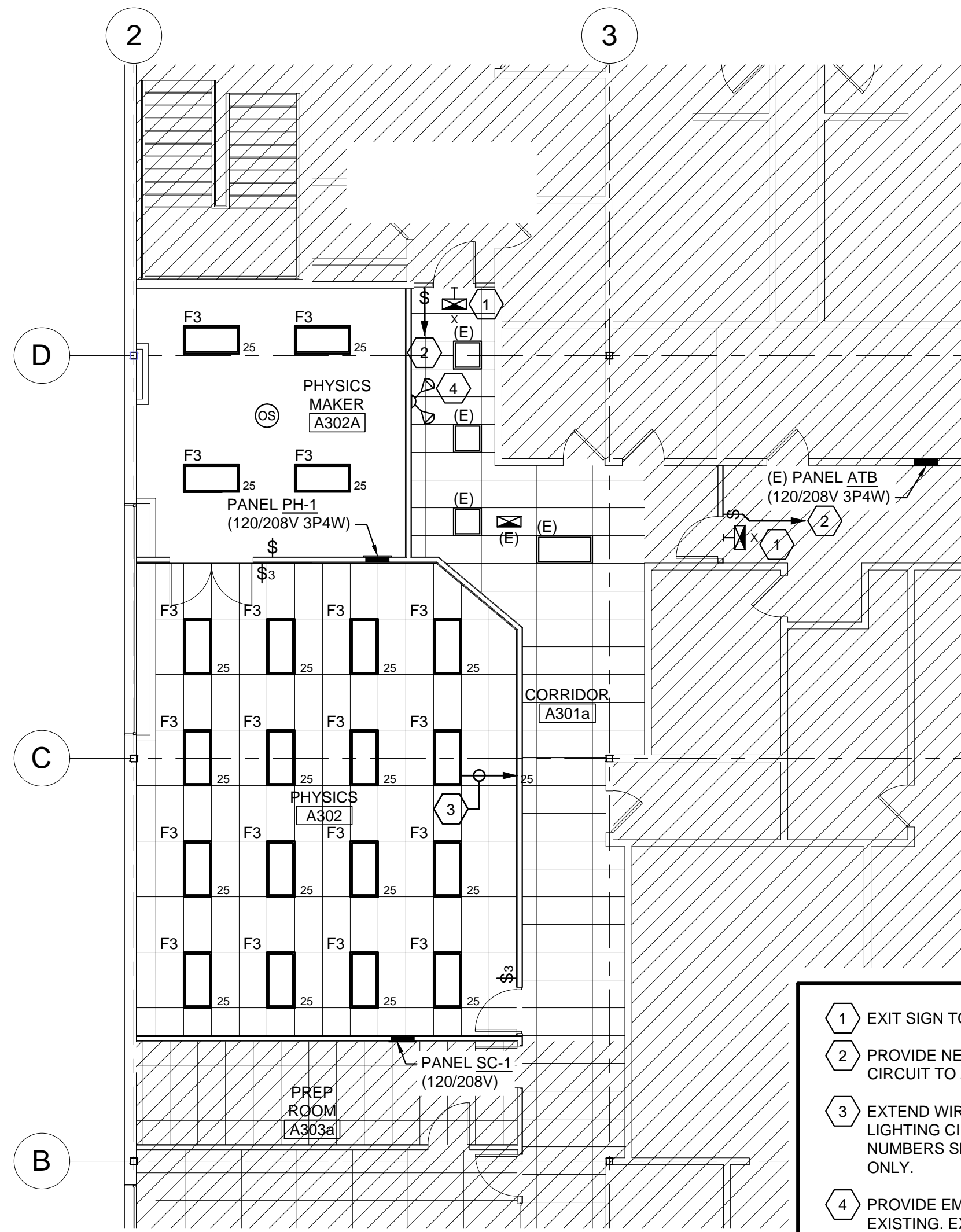
E7 LUMINAIRE SCHEDULE



1 UNLESS OTHERWISE NOTED, EXISTING LIGHTING FIXTURES, RECEPTACLES, AND DEVICES IN THIS AREA TO BE DISCONNECTED AND REMOVED.



- RELOCATED FIRE ALARM AUDIO/VISUAL DEVICE. EXTEND WIRING AND RECONNECT TO EXISTING FIRE ALARM CIRCUIT.
 - PROVIDE NEW FIRE ALARM DEVICE TO MATCH WITH EXISTING SYSTEM. EXTEND WIRING AND CONNECT TO EXISTING FIRE ALARM CIRCUITS RESPECTIVELY.
 - RUN (2)#12, (1)#12G TO PANEL PH-1. PROVIDE 1P-20A CIRCUIT BREAKERS.
 - PROVIDE CEILING SPEAKER FOR CROSS-CONNECTION TO THE INTERCOM SYSTEM. COORDINATE WITH CTS PROFESSIONALS FOR REQUIREMENTS.
 - WIREMOLD PLUGMOLD SERIES 3000 MOUNTED ABOVE COUNTER WITH DUPLEX RECEPTACLES 18" ON CENTER. ALTERNATE CIRCUITS.
 - NEW PANEL PH-1 SHALL BE FLUSH MOUNTED, 100A, MLO, 120/208V, 3P4W, 20 POLE, WITH BRANCH CIRCUIT BREAKERS AS INDICATED.
 - PROVIDE 3P-30A CIRCUIT BREAKER AT EXISTING SPACES. RELOCATE (3) CIRCUITS TO NEW PANEL PH-1 AS REQUIRED TO ACCOMMODATE SPACES.
 - CEILING CORD REEL WITH DUPLEX OUTLET AND BOX. PROVIDE 25' CORD AS MANUFACTURED BY KH INDUSTRIES (MODEL # RTBB3L-WDD520-J12F).
 - VERIFY EXACT LOCATION AND VOLTAGE OF EQUIPMENT. EQUIPMENT SHOWN IS BASED ON 120V.
 - PROVIDE SMOKE DETECTOR TO CONTROL SMOKE DAMPERS. EXTEND CIRCUIT TO EXISTING FIRE ALARM SYSTEM AND DAMPERS.
 - PROVIDE NEMA-3R, 3P-30A DISCONNECT SWITCH AND MOTOR STARTER COMBINATION, FUSED AT 10A.
 - RUN (3)#12, (1)#12G IN 3/4" TO PANEL PH-1. PROVIDE 3P-15A CB.
- NOTE: LIGHTING SWITCHES, SENSORS, AND DEVICES SHALL MATCH WITH PORTLAND PUBLIC SCHOOL'S STANDARDS.



- EXIT SIGN TO BE CONNECTED TO EXISTING CIRCUIT.
 - PROVIDE NEW SWITCH. MODIFY EXISTING LIGHTING CIRCUIT TO ACCOMMODATE SWITCH.
 - EXTEND WIRING AND CONNECT TO EXISTING 277V LIGHTING CIRCUIT SERVING THE AREA. CIRCUIT NUMBERS SHOWN ARE FOR IDENTIFICATION PURPOSES ONLY.
 - PROVIDE EMERGENCY REMOTE HEADS TO MATCH EXISTING. EXTEND WIRING AND CONNECT TO NEAREST EXISTING BATTERY UNIT.
- NOTE: LIGHTING SWITCHES, SENSORS, AND DEVICES SHALL MATCH WITH PORTLAND PUBLIC SCHOOL'S STANDARDS.

A1 DEMOLITION PLAN
SCALE: 1/8"=1'-0"

A3 DEMOLITION KEY NOTES
NO SCALE

A4 POWER & SYSTEMS PLAN
SCALE: 1/8"=1'-0"

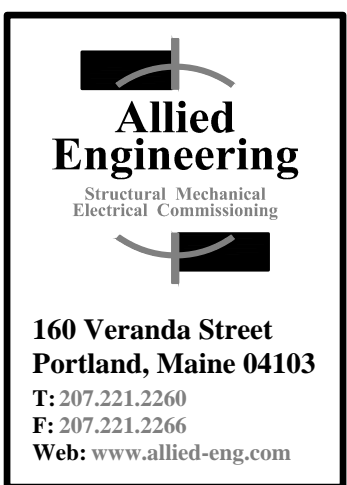
A6 POWER & SYSTEMS KEY NOTES
NO SCALE

A7 LIGHTING PLAN
SCALE: 1/8"=1'-0"

A9 LIGHTING KEY NOTES
NO SCALE

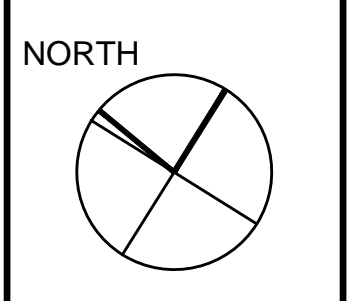


COPYRIGHT 2014 PDT Architects
Reuse or reproduction of the contents of this document is not permitted without written permission of PDT Architects.



allied Project No: 14-024
CAD File:

Minor Interior Renovations at CASCO BAY HIGH SCHOOL Phase I Part B
196 Allen Avenue, Portland, Maine



JOB NO. 14036

DRWN. CHK GMC KN

SCALE: As indicated

ISSUE STATUS

TITLE ELECTRICAL THIRD FLOOR DEMOLITION & NEW WORK PLANS

SHEET

E-101

PROPOSAL REQUEST #2 ~ 27 OCTOBER 2014 ~ NOT FOR CONSTRUCTION