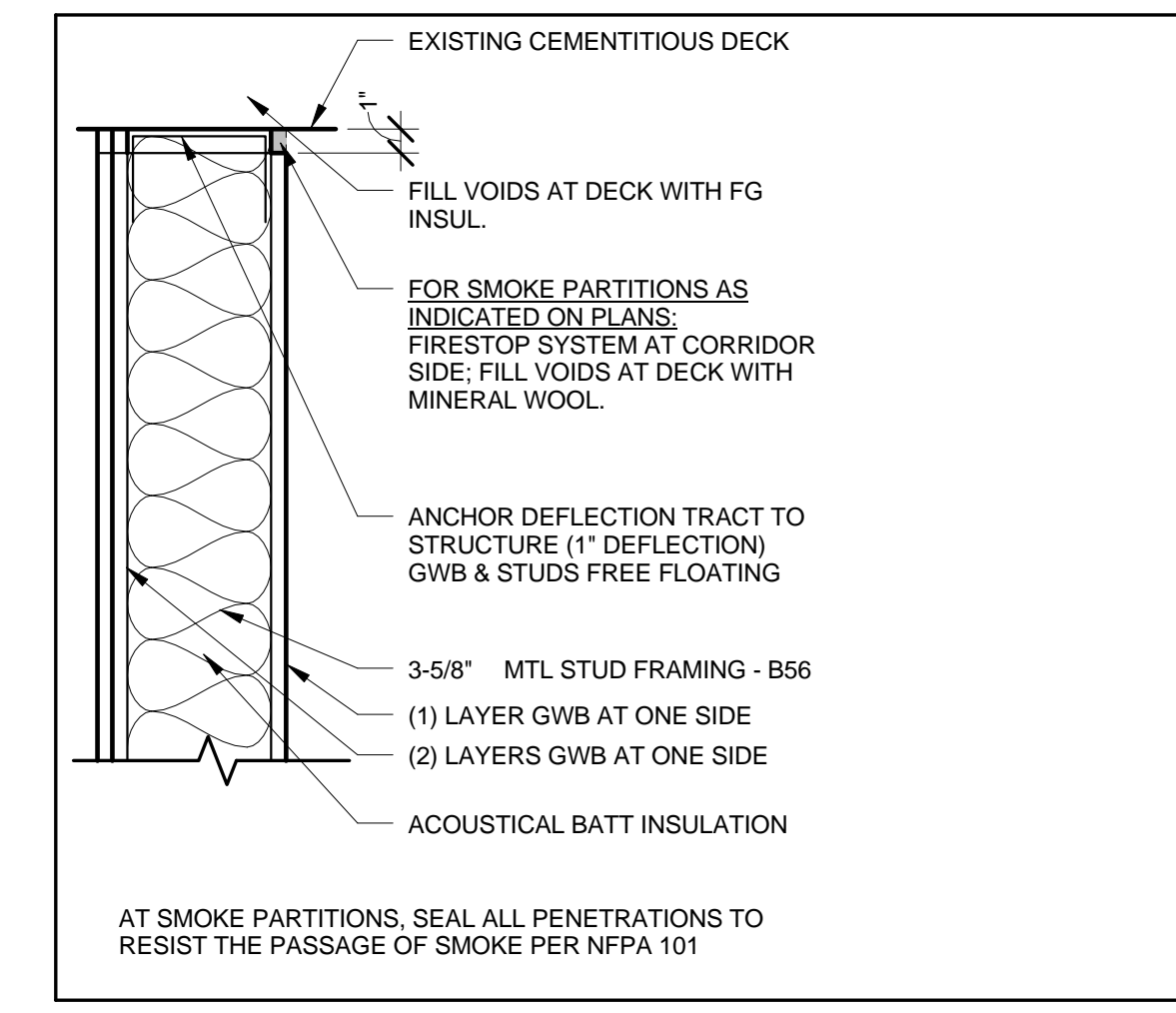
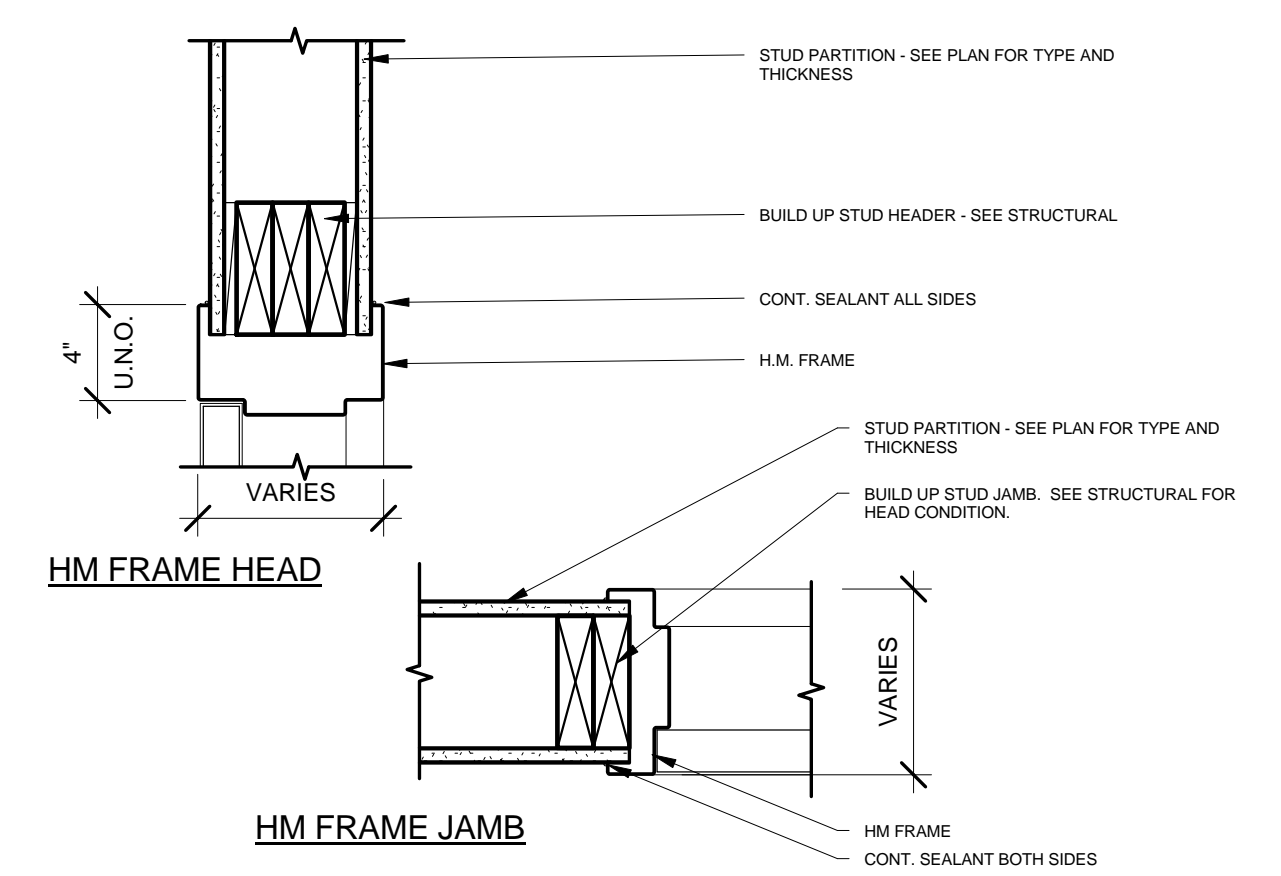


C3 TOP OF WALL DETAIL AT CORRIDOR INTERIOR PARTITION
1 1/2" = 1'-0"

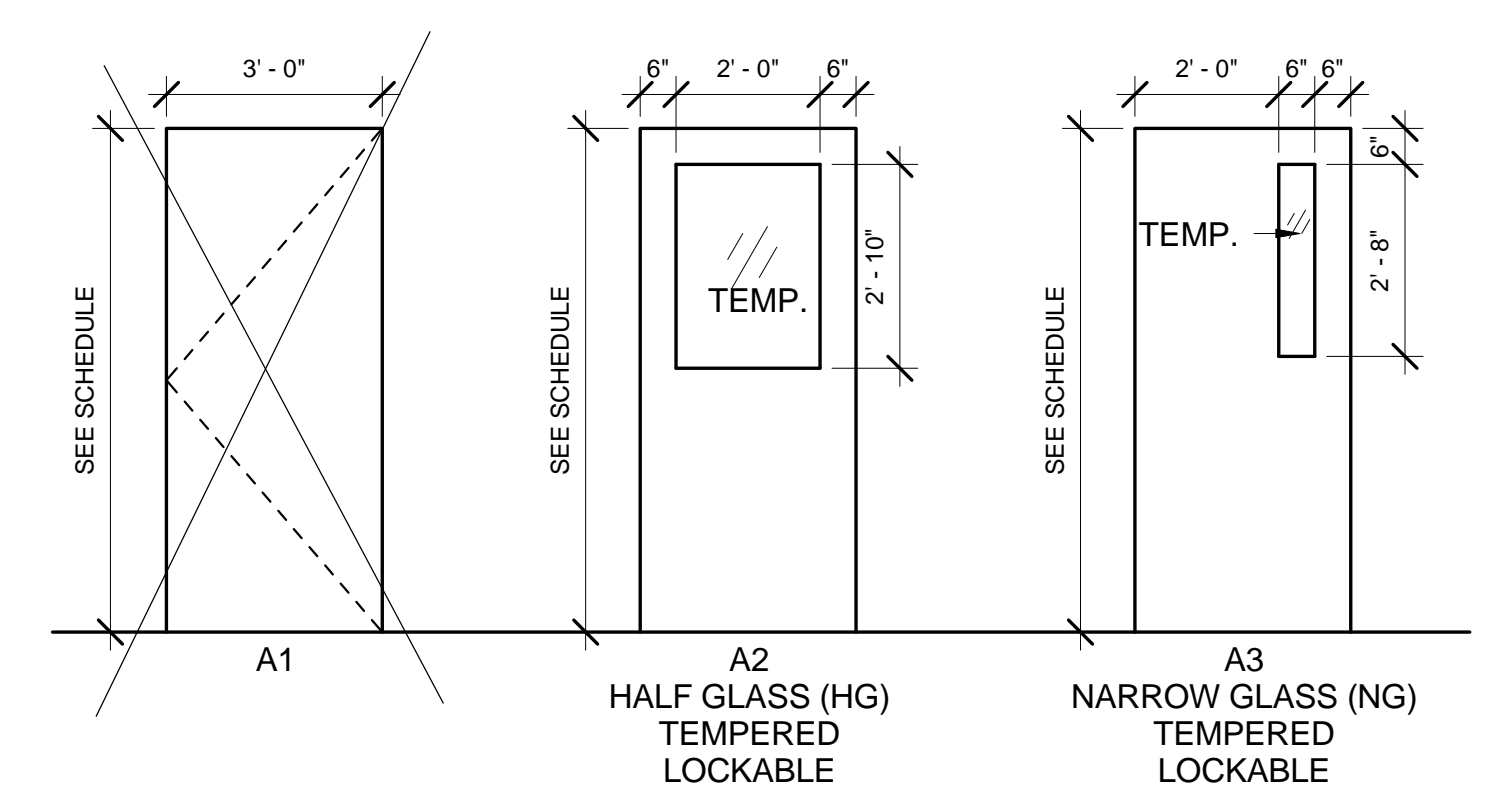


C1 INTERIOR PARTITION
1 1/2" = 1'-0"

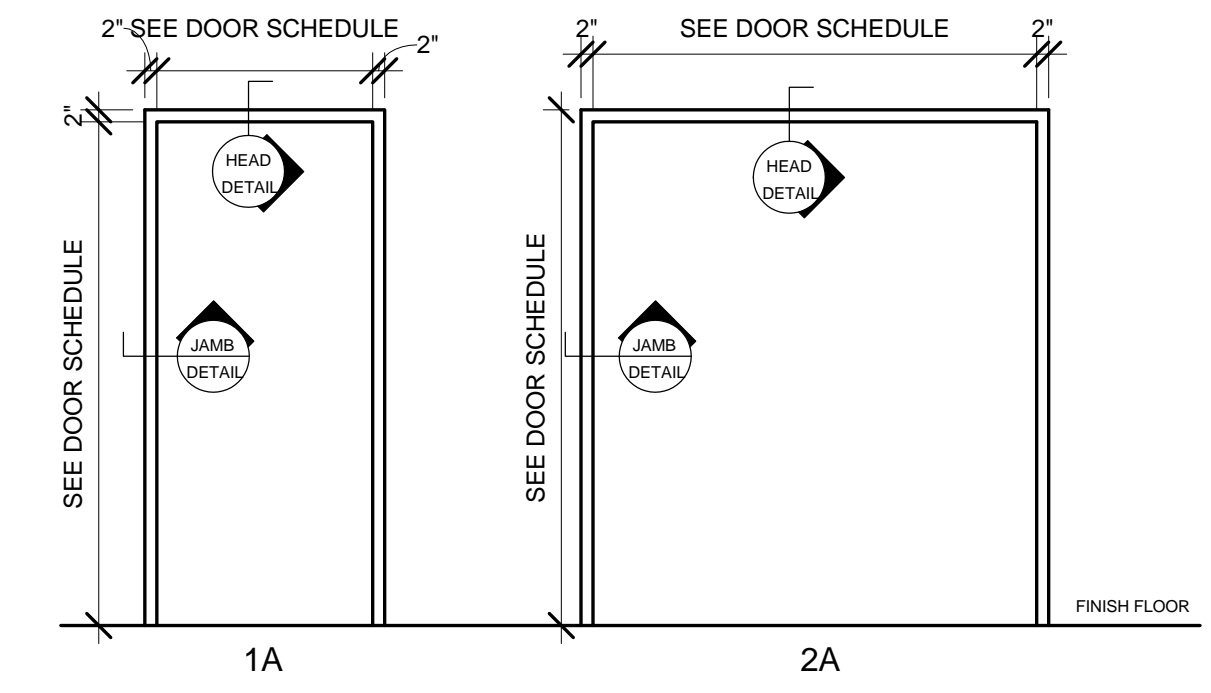
DOOR AND FRAME SCHEDULE PART B														
DOOR NUMBER	DOOR TYPE	HEIGHT	WIDTH	THICKNESS	DOOR MATERIAL	GLAZING	RATING	FRAME TYPE	FRAME MATERIAL	HEAD	JAMB	DOOR NUMBER	COMMENTS	
A302	A3	7' - 0"	3' - 0"	1 3/4"	WD	TEMP	--	1A	HM	C2/A600	C2/A600	A302	SMOKE RATED, CLOSER. TEMPERED. SEE SPECIFICATIONS FOR DOOR HARDWARE	
A302A	A2	7' - 0"	6' - 0"	1 3/4"	WD	TEMP	--	2A	HM	C2/A600	C2/A600	A302A	TEMPERED. SEE SPECIFICATIONS FOR DOOR HARDWARE	



A4 Copy of HM FRAME DETAILS @ GWB
1 1/2" = 1'-0"



A3 Copy (3) of DOOR TYPES
3/8" = 1'-0"



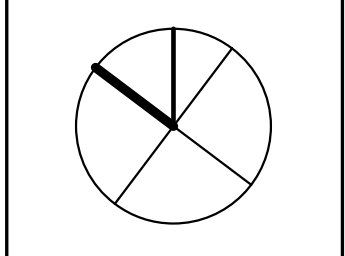
A1 Copy (2) of DOOR FRAME TYPES
3/8" = 1'-0"



49 DARTMOUTH STREET
PORTLAND, MAINE 04101
207-775-1059
www.pdtarchts.com

COPYRIGHT 2014
PDT Architects
Reuse or reproduction of the
contents of this document is not
permitted without written
permission of PDT Architects.

Minor Interior Renovations at CBHS
CASCO BAY HIGH SCHOOL Phase I PART B
196 Allen Avenue, Portland, Maine



JOB NO.
14036

DRWN. CHK
Checker

SCALE:
As indicated

ISSUE STATUS
PROPOSAL REQ.
ISSUE DATE
10-30-14

TITLE
DETAILS AND
SCHEDULES

SHEET
A100B

PROPOSAL REQUEST #2 - OCTOBER 30, 2014 - NOT FOR CONSTRUCTION