

DOOR AND FRAME SCHEDULE

DOOR NUMBER	DOOR TYPE	HEIGHT	WIDTH	THICKNESS	DOOR MATERIAL	GLAZING	RATING	FRAME TYPE	FRAME MATERIAL	HEAD	JAMB	DOOR NUMBER	COMMENTS
A301a	RELOCATED EXISTING (TYPE A3)	7' - 0"	3' - 0"	1 3/4"	RELOCATED EXISTING	HG	--	RELOCATED EXISTING (TYPE 1A)	RELOCATED EXISTING	C3/A600	C3/A600	A301a	SMOKE RATED, CLOSER. RELOCATED DOOR FROM DEMO NOTE #02.D3 ON 1/AD102
A301b	RELOCATED EXISTING (TYPE A3)	7' - 0"	3' - 0"	1 3/4"	RELOCATED EXISTING	HG	--	RELOCATED EXISTING (TYPE 1A)	HM	C3/A600	C3/A600	A301b	SMOKE RATED, CLOSER. RELOCATED DOOR FROM DEMO NOTE #02.D2 ON 1/AD102
A303	A4	7' - 0"	3' - 0"	1 3/4"	RELOCATED EXISTING	NG	20 MINS.	RELOCATED EXISTING (TYPE 1A)	HM	C3/A600	C3/A600	A303	SMOKE RATED, CLOSER. TEMPERED
A303a	A1	7' - 0"	3' - 0"	1 3/4"	WD	--	20 MINS.	1A	HM	C3/A600	C3/A600	A303a	SMOKE RATED, CLOSER.
A303b	A1	7' - 0"	3' - 0"	1 3/4"	WD	--	--	1A	HM	C3/A600	C3/A600	A303b	SMOKE RATED, CLOSER
A303c	A4	7' - 0"	3' - 0"	1 3/4"	WD	NG	20 MINS.	1A	HM	C3/A600	C3/A600	A303c	SMOKE RATED, CLOSER. TEMPERED

- DOOR & WINDOW GENERAL NOTES**
- Solidly pack all interior hollow metal frames with mineral-fiber insulation.
 - Refer to Specifications for locations of Tempered, Wired, or Insulating Glass, unless noted otherwise.
 - Unless noted otherwise, the location of doorframes shall be:
 - 4" from adjacent wall to the hinge side in metal stud partitions.
 - Maintain a clear dimension of 1'-6" from all adjacent construction to the latch (pull) side of the door.
 - Maintain other clear dimensions in accordance with the latest version of the ADA Accessibility Guidelines (ADAAG).

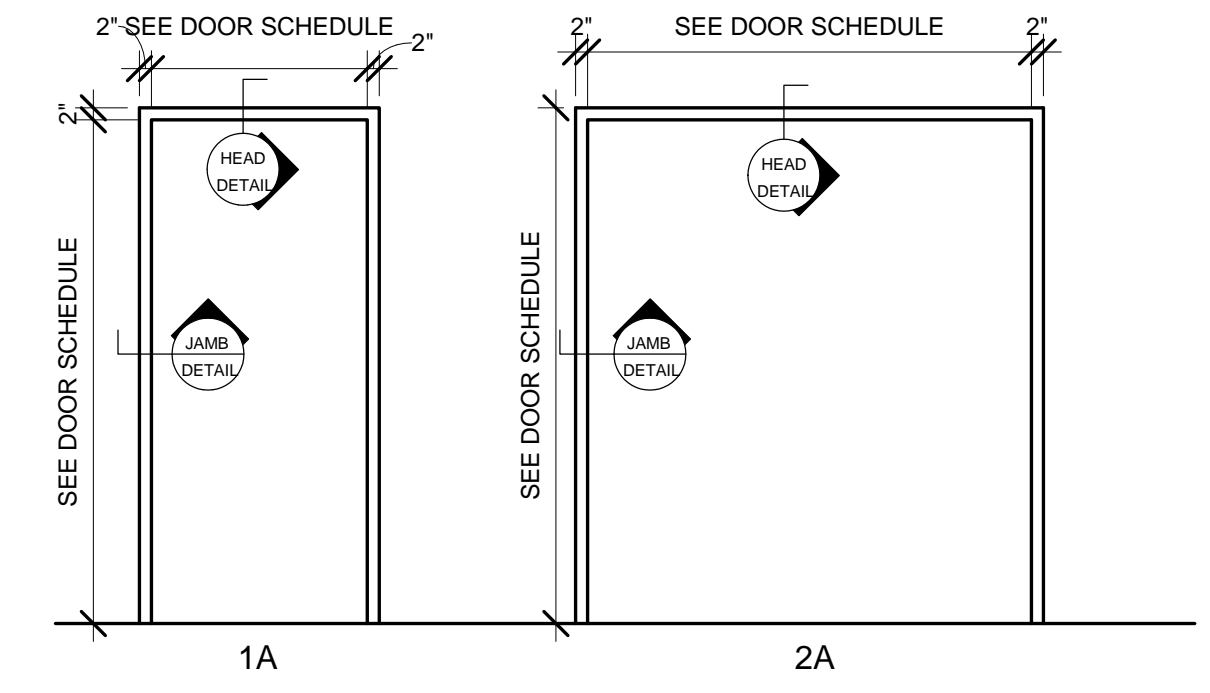
- FURNITURE, EQUIPMENT AND FINISHES GENERAL NOTES:**
- OWNER PROVIDED AND INSTALLED ITEMS INCLUDE:
- SIGNAGE
 - TACK BOARDS (TB)
 - MARKER BOARDS (MB)
- GC PROVIDED/ GC INSTALLED ITEMS INCLUDE (NOT LIMITED TO):
- FIRE EXTINGUISHERS (FE)



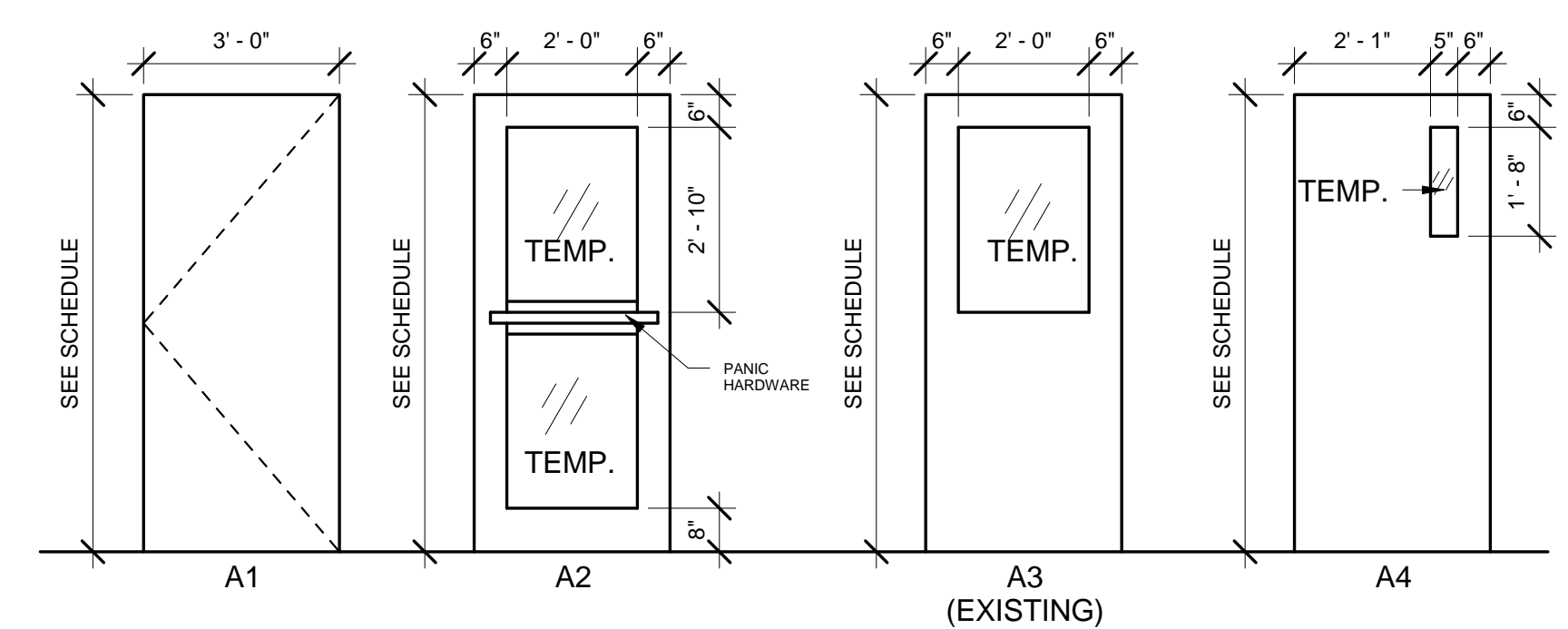
49 DARTMOUTH STREET
 PORTLAND, MAINE 04101
 207-775-1059
 www.pdtarchts.com

COPYRIGHT 2014 PDT Architects

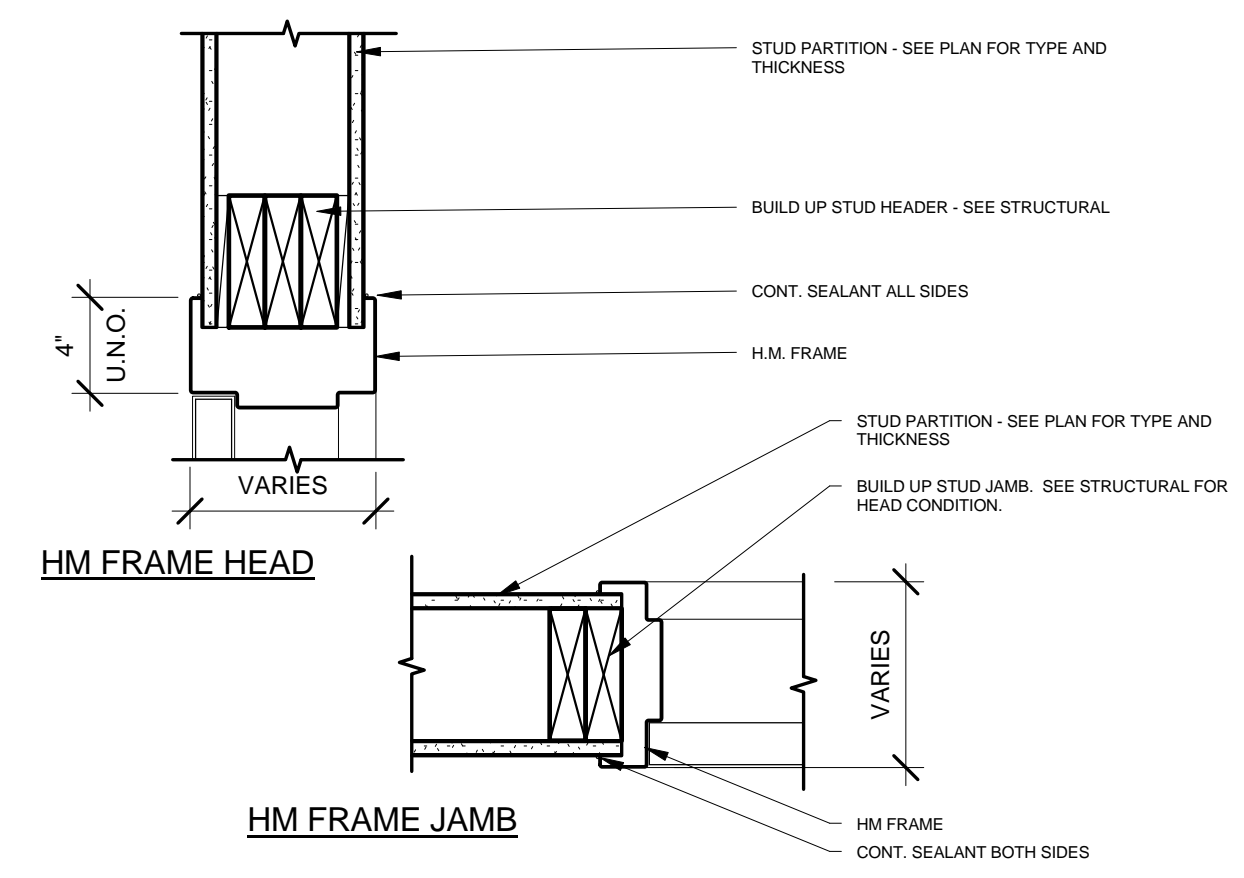
Reuse or reproduction of the contents of this document is not permitted without written permission of PDT Architects.



1 DOOR FRAME TYPES
 3/8" = 1'-0"



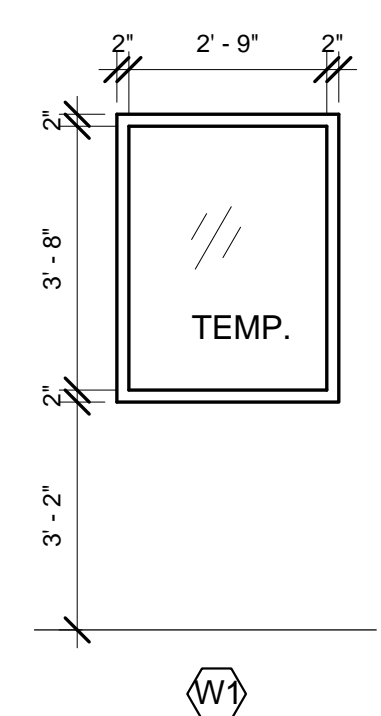
2 DOOR TYPES
 3/8" = 1'-0"



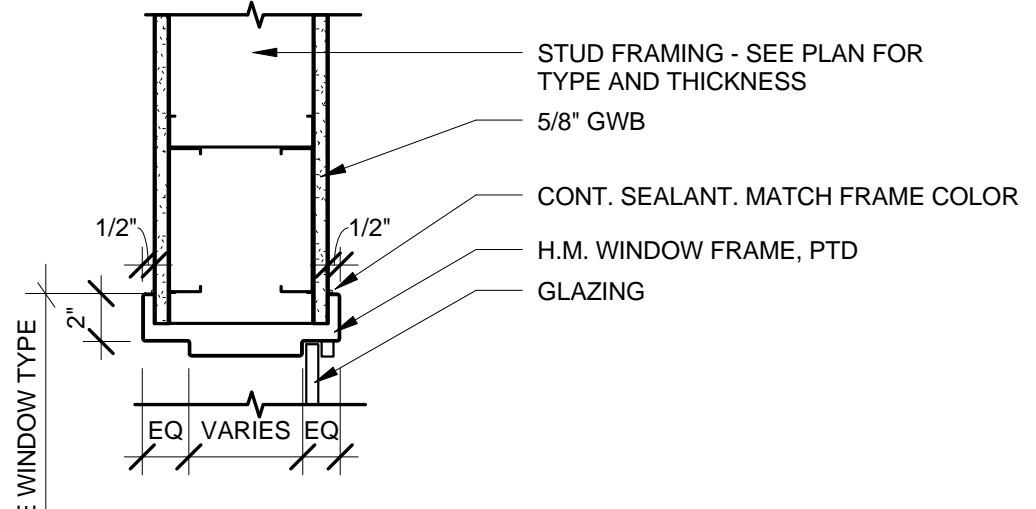
C3 HM FRAME DETAILS @ GWB
 1 1/2" = 1'-0"

Window Schedule					
TYPE	COUNT	HEIGHT	WIDTH	HEAD HEIGHT	NOTES
W1	1	7' - 0"	3' - 0"	7' - 0"	

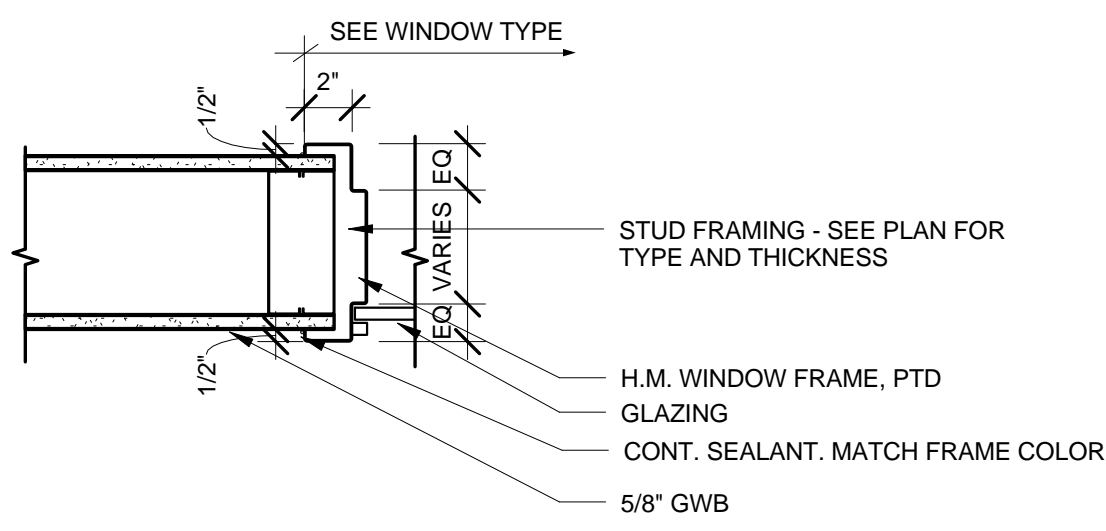
Grand total: 1



3 WINDOW TYPES
 3/8" = 1'-0"

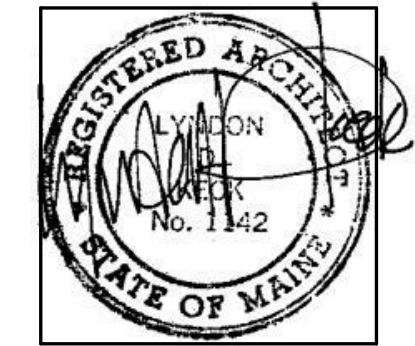


WINDOW HM HEAD DETAIL



B4 WINDOW HEAD AND JAMB
 1 1/2" = 1'-0"

Minor Interior Renovations at 196 Allen Avenue for
 CASCO BAY HIGH SCHOOL
 196 Allen Avenue, Portland Maine



JOB NO.
 14036

DRWN. CHK
 AHC

SCALE:
 As indicated

ISSUE STATUS
 CONSTRUCTION
 ISSUE DATE
 APRIL 18, 2014

TITLE
 SCHEDULES

SHEET
 A600

REV.	DESCRIPTION	DATE
1	REVISION #1	APRIL 25, 2014
0	ISSUED FOR CONSTRUCTION	APRIL 18, 2014