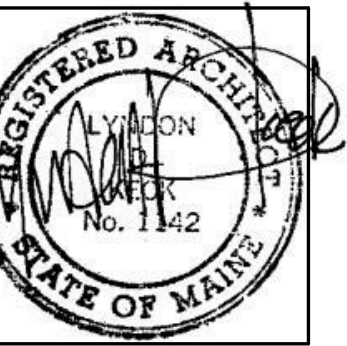




49 DARTMOUTH STREET  
PORTLAND, MAINE 04101  
207-775-1059  
www.pdtarch.com

COPYRIGHT 2014  
PDT Architects  
Reuse or reproduction of the  
contents of this document is not  
permitted without written  
permission of PDT Architects.

Minor Interior Renovations at 196 Allen Avenue for  
CASCO BAY HIGH SCHOOL  
196 Allen Avenue, Portland Maine



JOB NO.  
14036

DRWN. CHK  
AHC

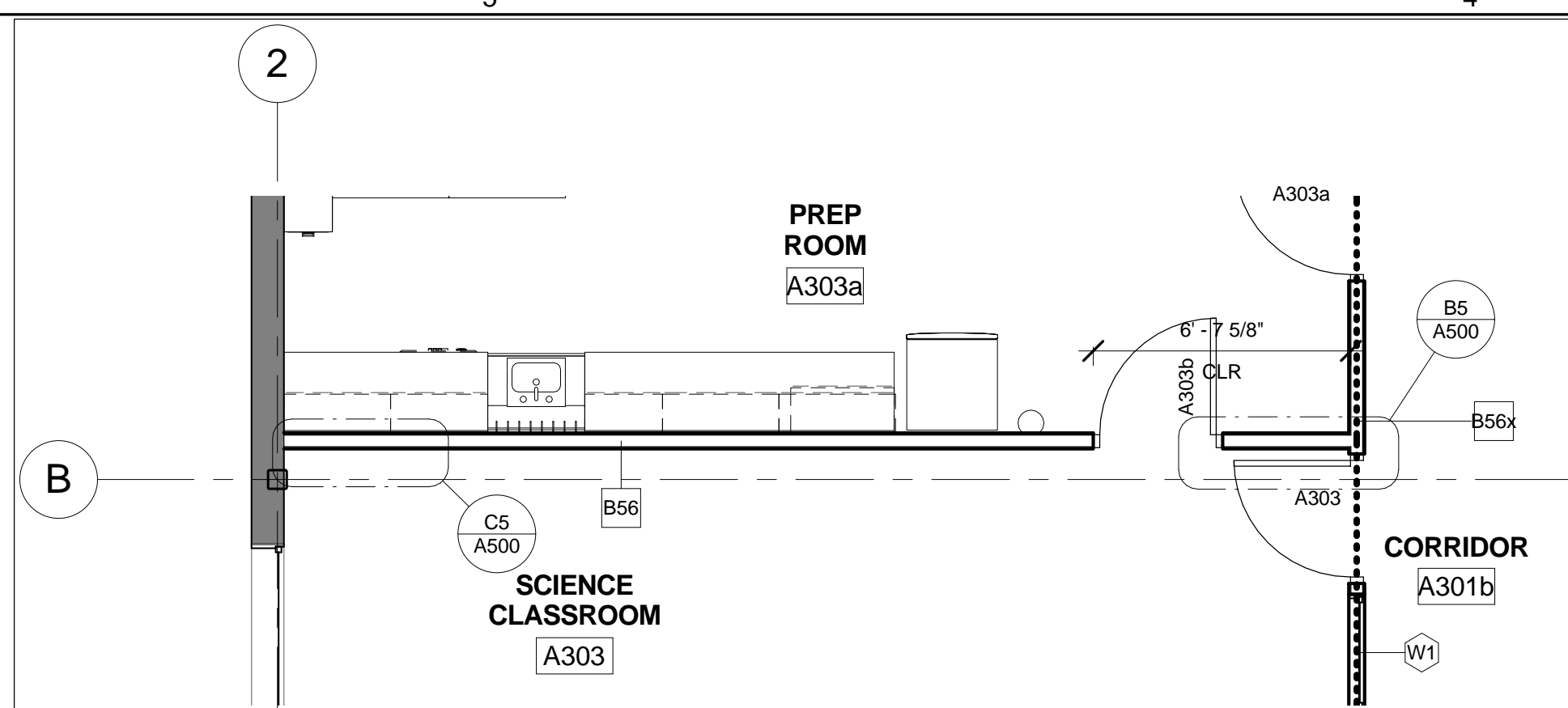
SCALE:  
As indicated

ISSUE STATUS  
CONSTRUCTION  
ISSUE DATE  
APRIL 18, 2014

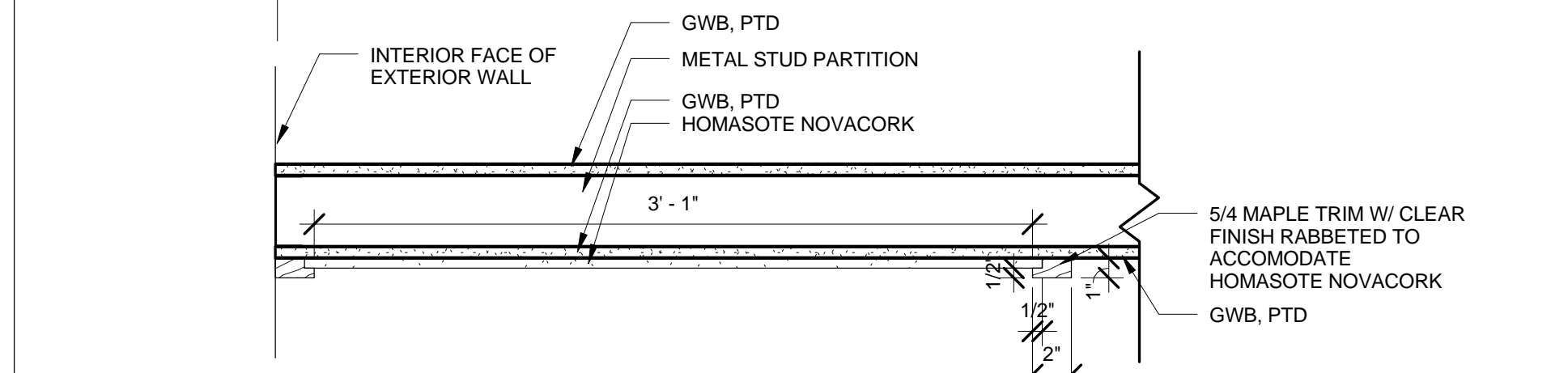
TITLE  
DETAILS

SHEET  
A500

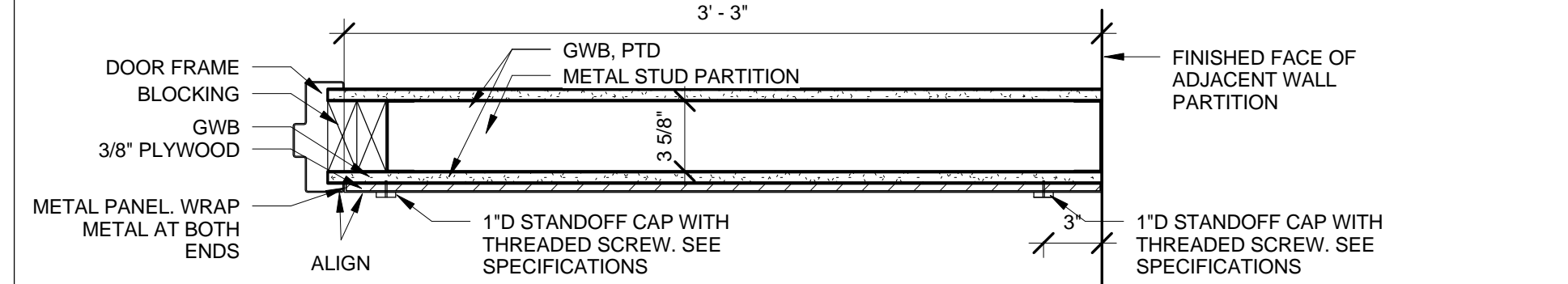
REV.	DESCRIPTION	DATE
1	REVISION #1	APRIL 25, 2014
0	ISSUED FOR CONSTRUCTION	APRIL 18, 2014



D5 ENLARGED THIRD FLOOR PLAN AT TEACHING WALL  
1/4" = 1'-0"

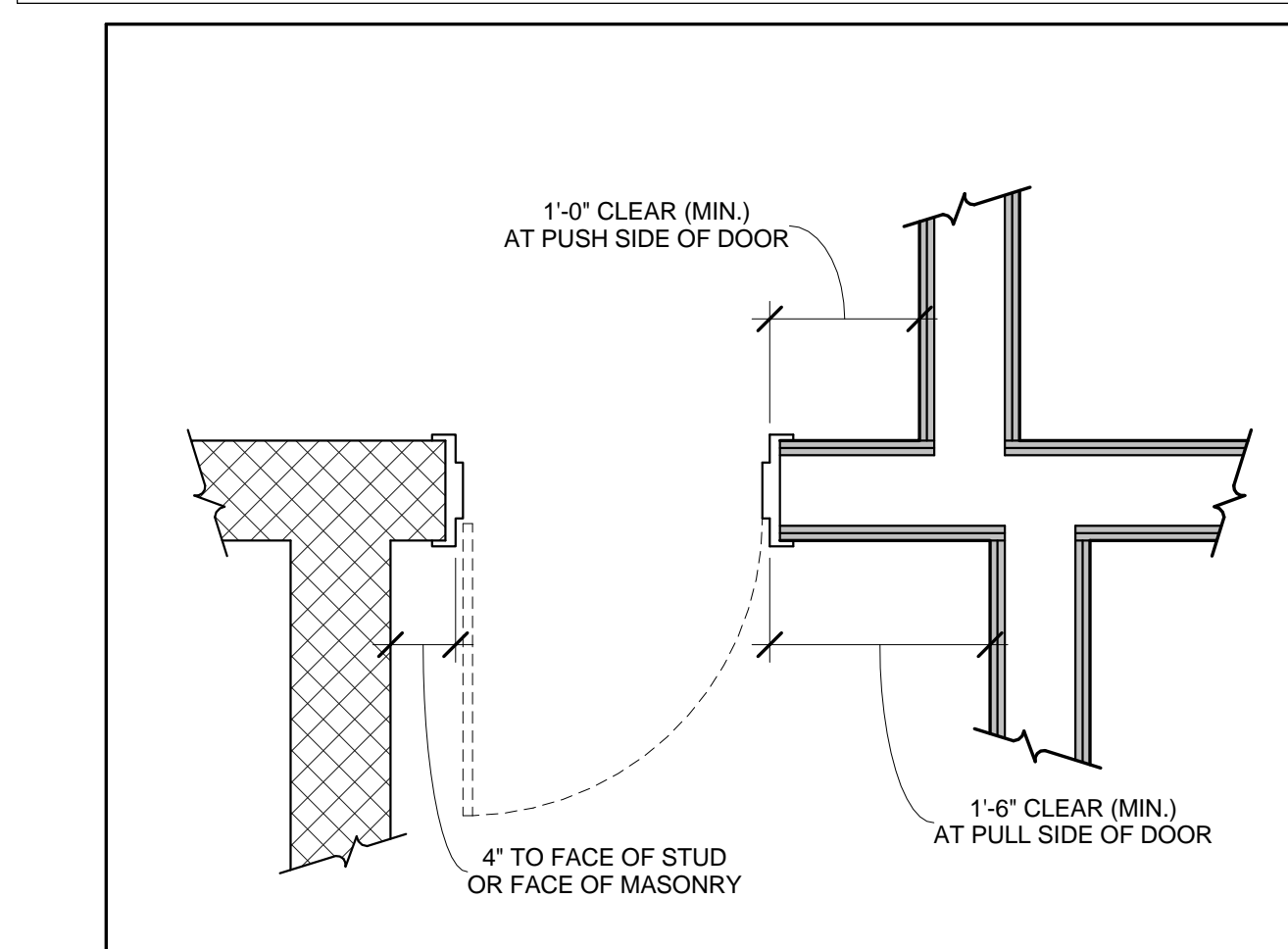


C5 PLAN DETAIL AT CORK  
1 1/2" = 1'-0"



B5 PLAN DETAIL AT METAL PANEL  
1 1/2" = 1'-0"

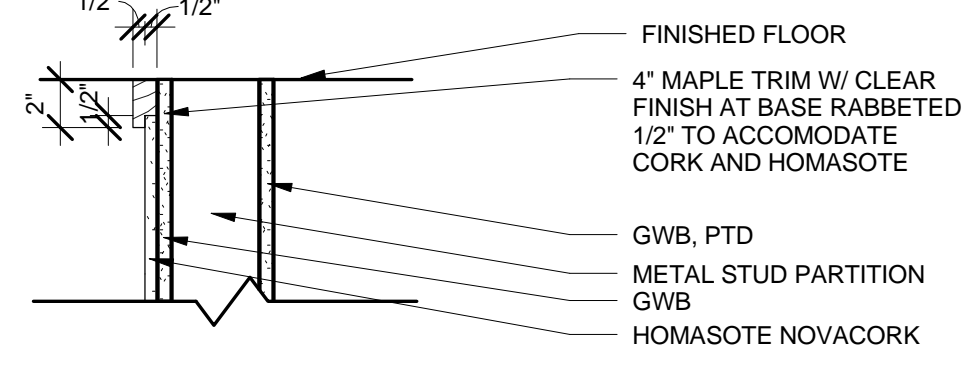
NOTE: VERTICAL FASTENING TO BE EQUALLY SPACED



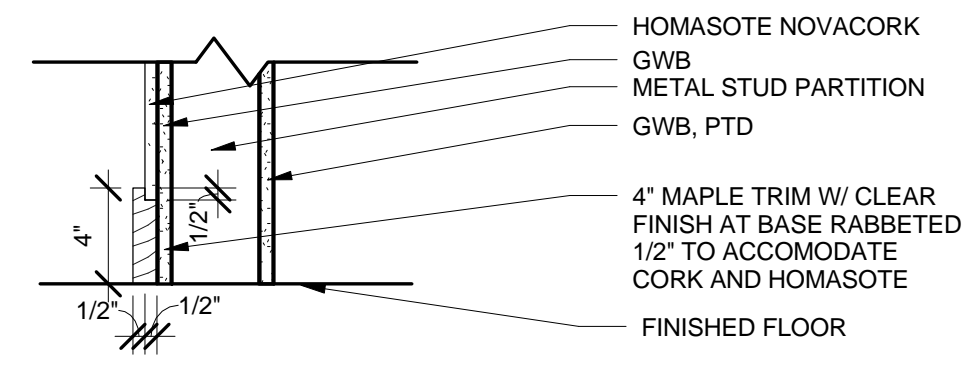
A5 DIMENSIONAL STANDARDS  
1 1/2" = 1'-0"



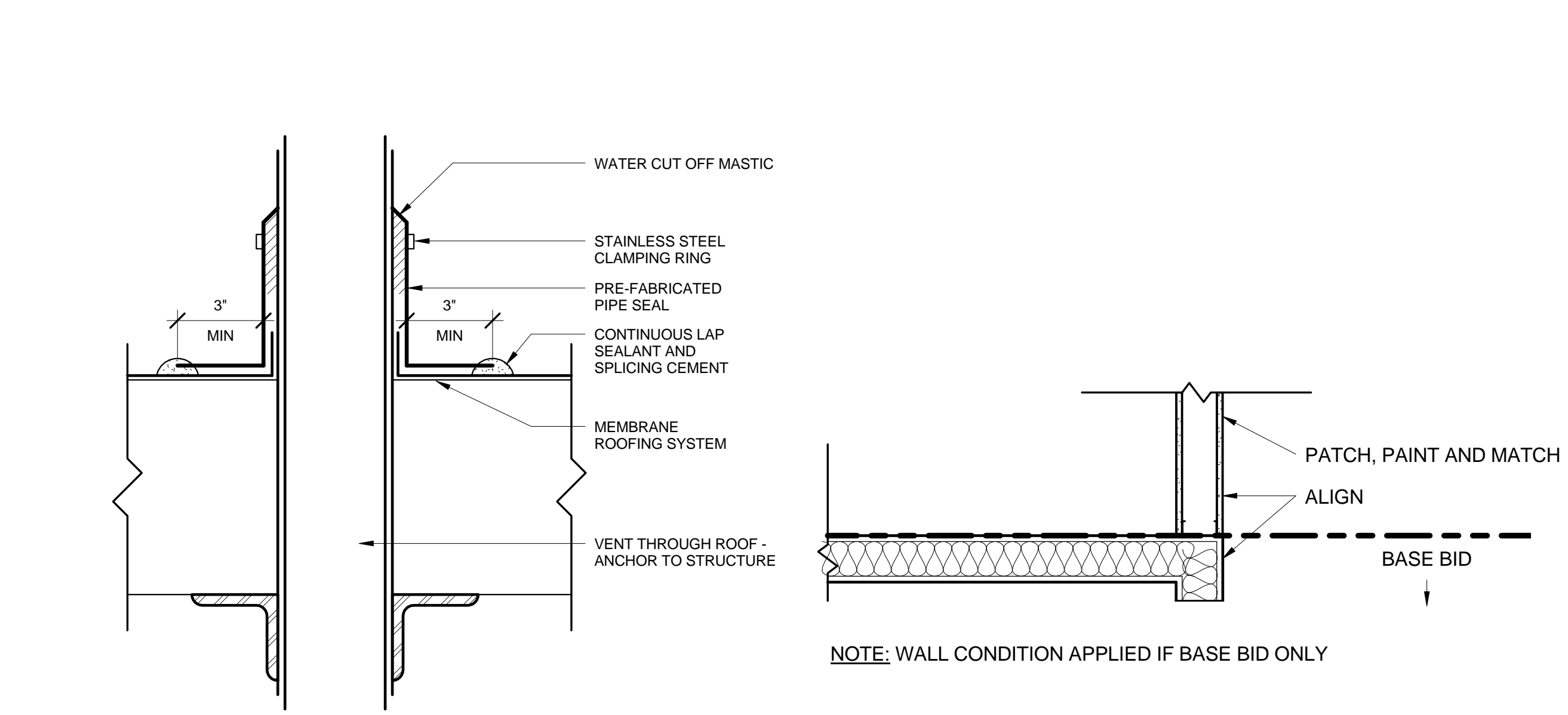
A4 PARTITION STANDARDS  
1 1/2" = 1'-0"



D4 SECTION DETAIL AT TOP OF CORK WALL  
1 1/2" = 1'-0"

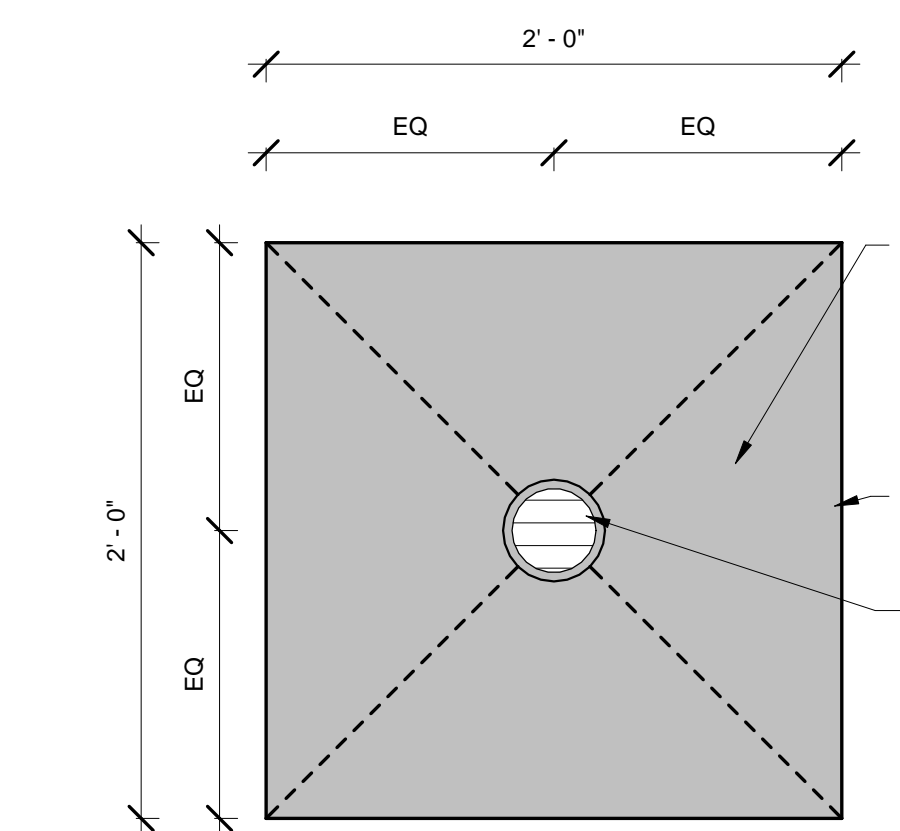


C4 SECTION DETAIL AT BASE OF CORK WALL  
1 1/2" = 1'-0"

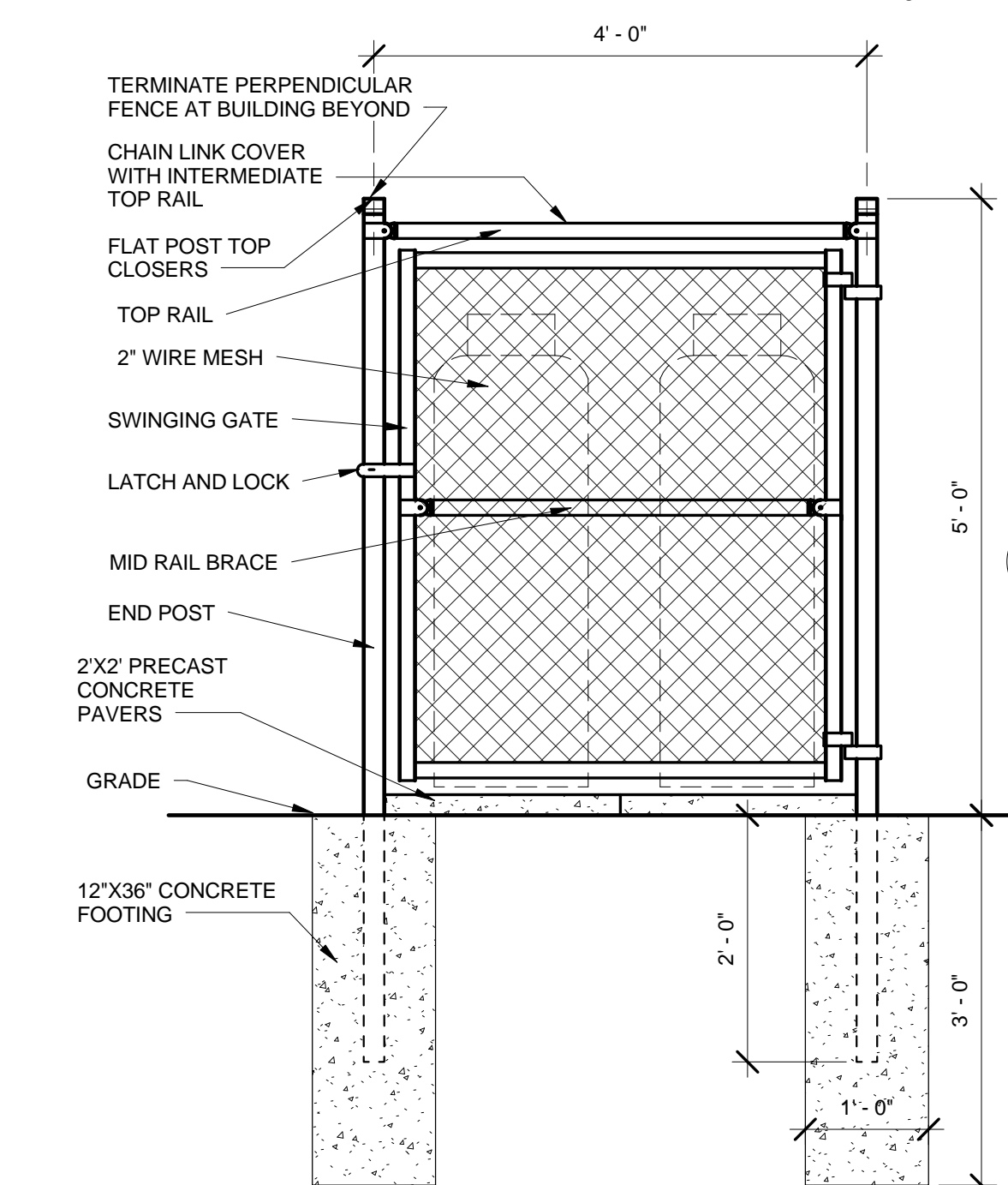


C2 DTL @ VENT / FLAT ROOF  
3" = 1'-0"

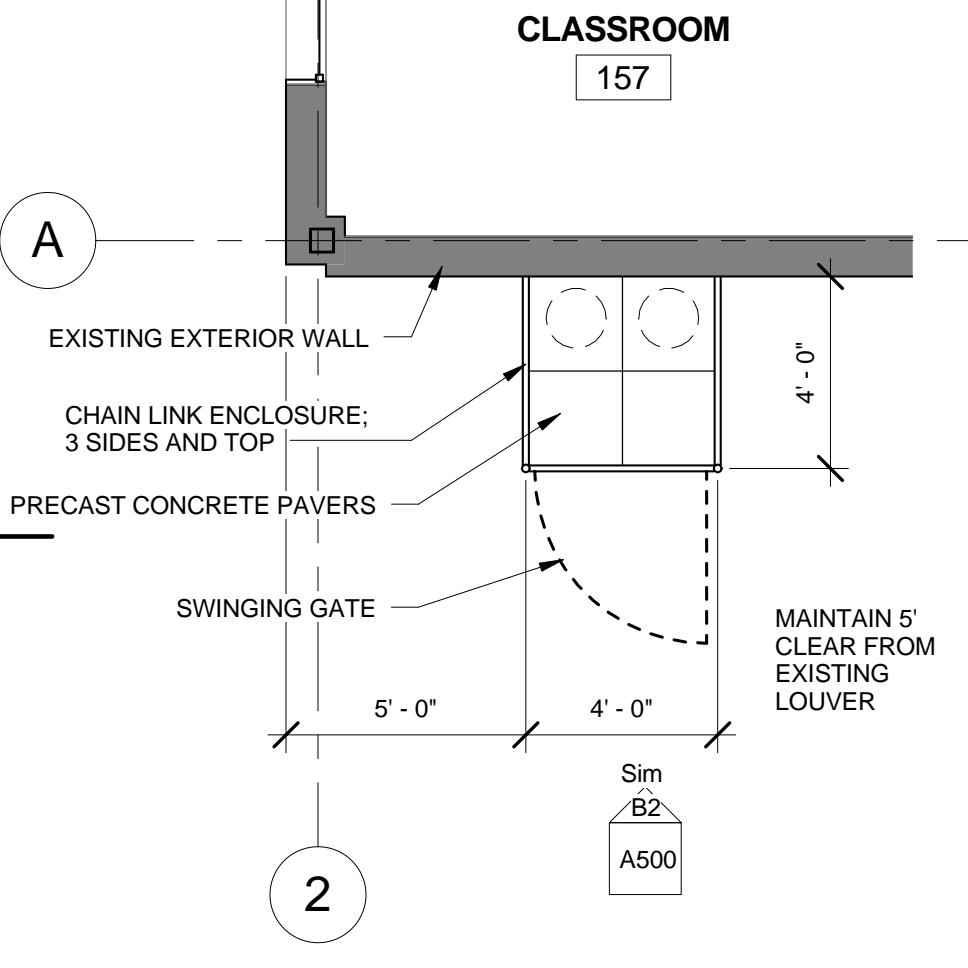
C1 ALTERNATE #1 PLAN DETAIL AT EXISTING WALL AND NEW  
1" = 1'-0"



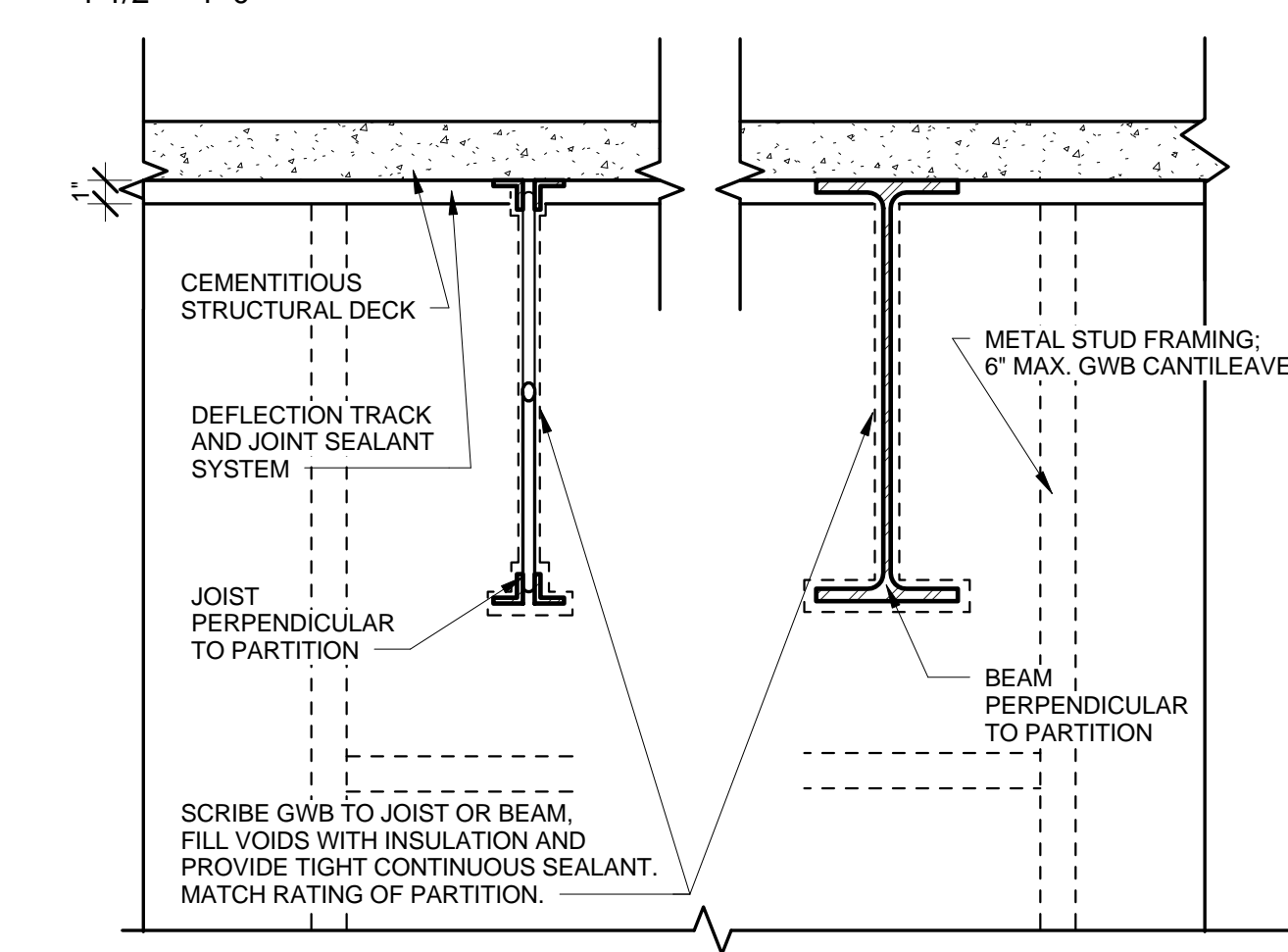
B3 FLOOR DRAIN - CIRCULAR  
1 1/2" = 1'-0"



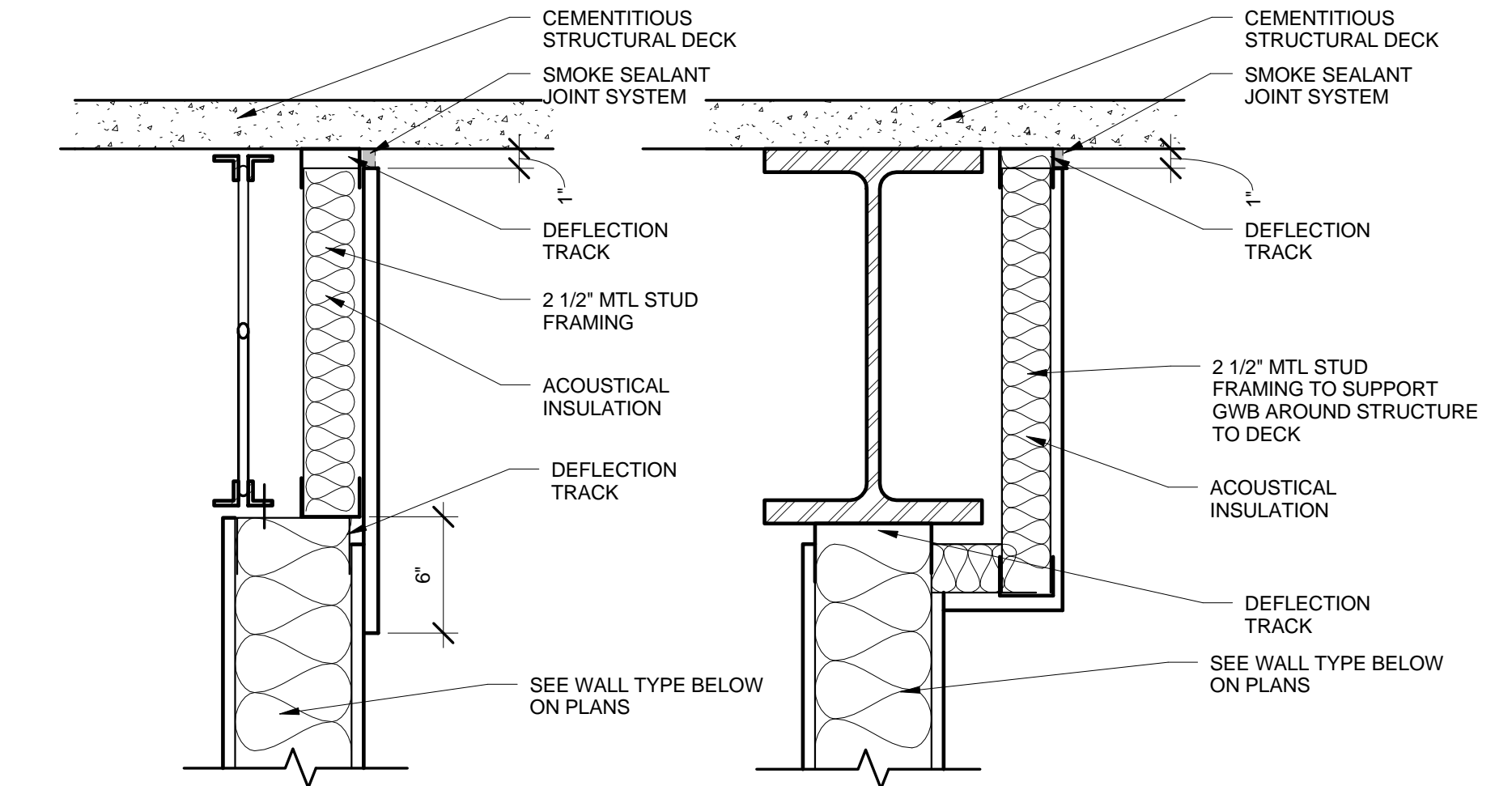
B2 CHAIN LINK ENCLOSURE DETAILS  
3/4" = 1'-0"



B1 EXTERIOR GAS LOCATION-CHAIN LINK ENCLOSURE  
1/4" = 1'-0"



A3 TYPICAL TOP OF WALL DETAILS  
1 1/2" = 1'-0"



JOIST PARALLEL TO PARTITION BEAM PARALLEL TO PARTITION