

LEVEL LIP SPREADER

AREA OF IMPACT WETLAND

COMMON OPEN SPACE

EROSION CONTROL MIX BERM

NO CUTTING OF TREES LARGER THAN 6" ALLOWED IN THIS AREA TRIMMING AND PRUNING IS ALLOWED

12' WIDE PEDESTRIAN EASEMENT

DEPT. OF BUILDINGS AND PERMITS  
CITY OF PORTLAND, ME

MAR 13 2006

RECEIVED

SCALE: 1" = 30'

GENERAL SITE PLAN

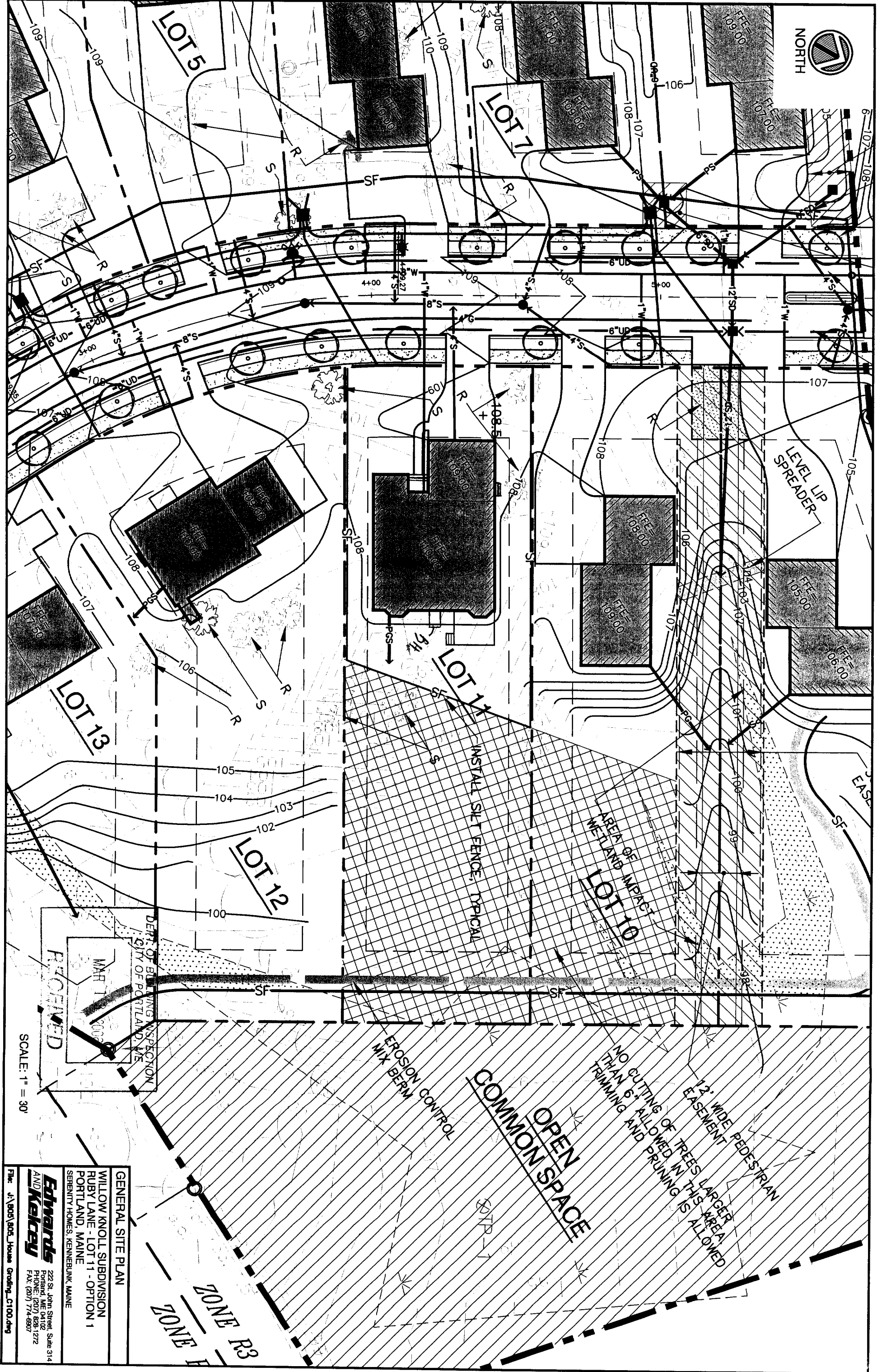
WILLOW KNOLL SUBDIVISION  
RUBY LANE - LOT 11 - OPTION 1  
PORTLAND, MAINE  
SERENITY HOMES, KENNEBUNK, MAINE

**Edwards and Kelcey**  
222 St. John Street, Suite 314  
Portland, ME 04102  
PHONE: (207) 896-1272  
FAX: (207) 774-8907

File: J:\805\805\_House\_Grounding\_C100.dwg

Used for Zone R3

ZONE R3



LEVEL LIP SPREADER

INSTALL SILT FENCE, DYPICAL

AREA OF IMPACT WETLAND

COMMON OPEN SPACE

EROSION CONTROL MIX BERM

NO CUTTING OF TREES LARGER THAN 6" ALLOWED IN THIS TRIMMING AND PRUNING IS ALLOWED

12' WIDE PEDESTRIAN EASEMENT

ZONE R3  
ZONE R

RECEIVED  
MAY 13 2008  
DEPT. OF BUILDING INSPECTION  
CITY OF PORTLAND, ME

SCALE: 1" = 30'

**GENERAL SITE PLAN**

WILLOW KNOLL SUBDIVISION  
RUBY LANE - LOT 11 - OPTION 1  
PORTLAND, MAINE  
SERENITY HOMES, KENNEBUNK, MAINE

**Edwards**  
**AND Kelcey**  
222 St. John Street, Suite 314  
Portland, ME 04102  
PHONE: (207) 828-1272  
FAX: (207) 774-8907

File: J:\905\905\_House Grading\_C1000.dwg