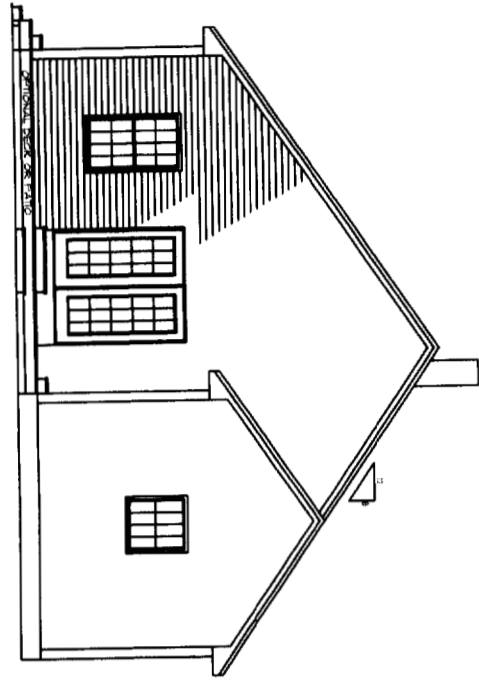
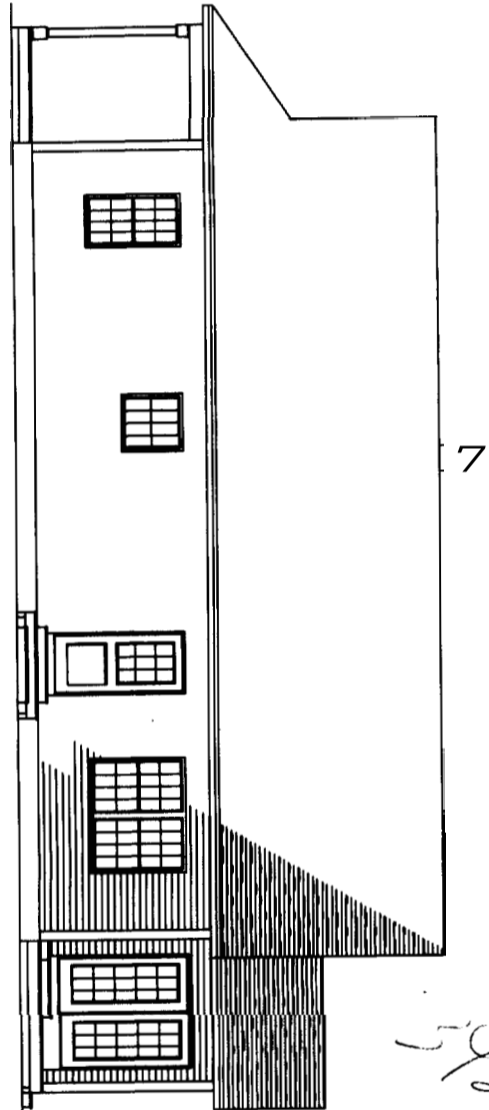


REAR ELEVATION

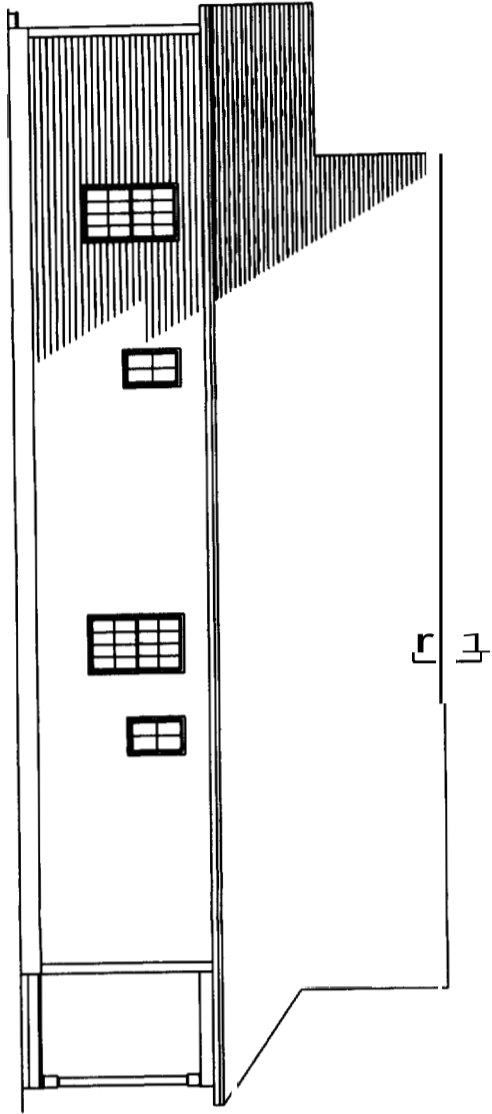


RIGHT ELEVATION

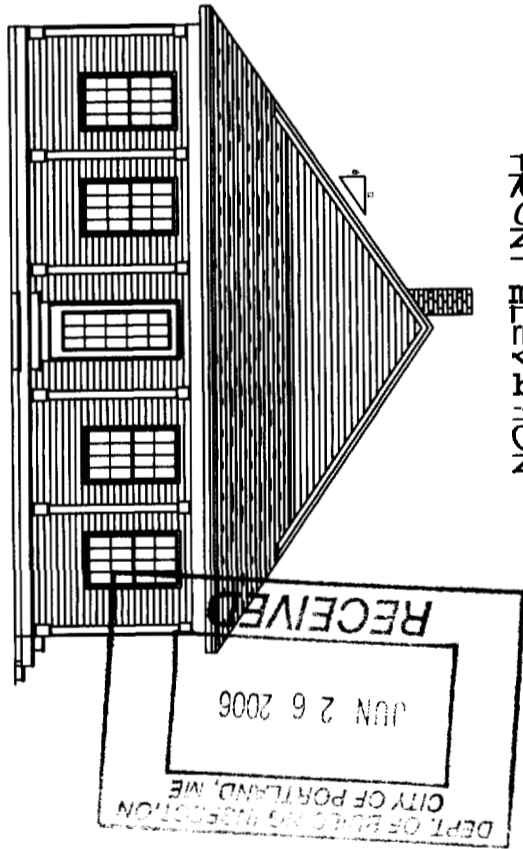


5/28/06

LEFT ELEVATION



FRONT ELEVATION



DEPT. OF PUBLIC WORKS
CITY OF PORTLAND, ME
RECEIVED
JUN 26 2006

THESE DRAWINGS ARE COPY WRITTEN, AND AS SUCH CANNOT BE COPIED, CONSTRUCTED FROM, OR GIVEN TO A THIRD PARTY WITHOUT WRITTEN PERMISSION FROM HOUSE CALLS INC. THEY ARE TO BE USED FOR THE CONSTRUCTION OF ONE HOME ONLY AT THE ADDRESS NAMED ON THESE DRAWINGS.

IF ANY REPRODUCTION OF THESE DRAWINGS VIOLATES FEDERAL COPYRIGHT LAWS I

TWOMBLY



HOUSE CALLS INC.
HOME PLANNING & DESIGN
151 ROOSEVELT TRAIL, WINDHAM, ME

PROJECT LOT 5, RUBY LANE, PORTLAND

DRAWING

ELEVATIONS

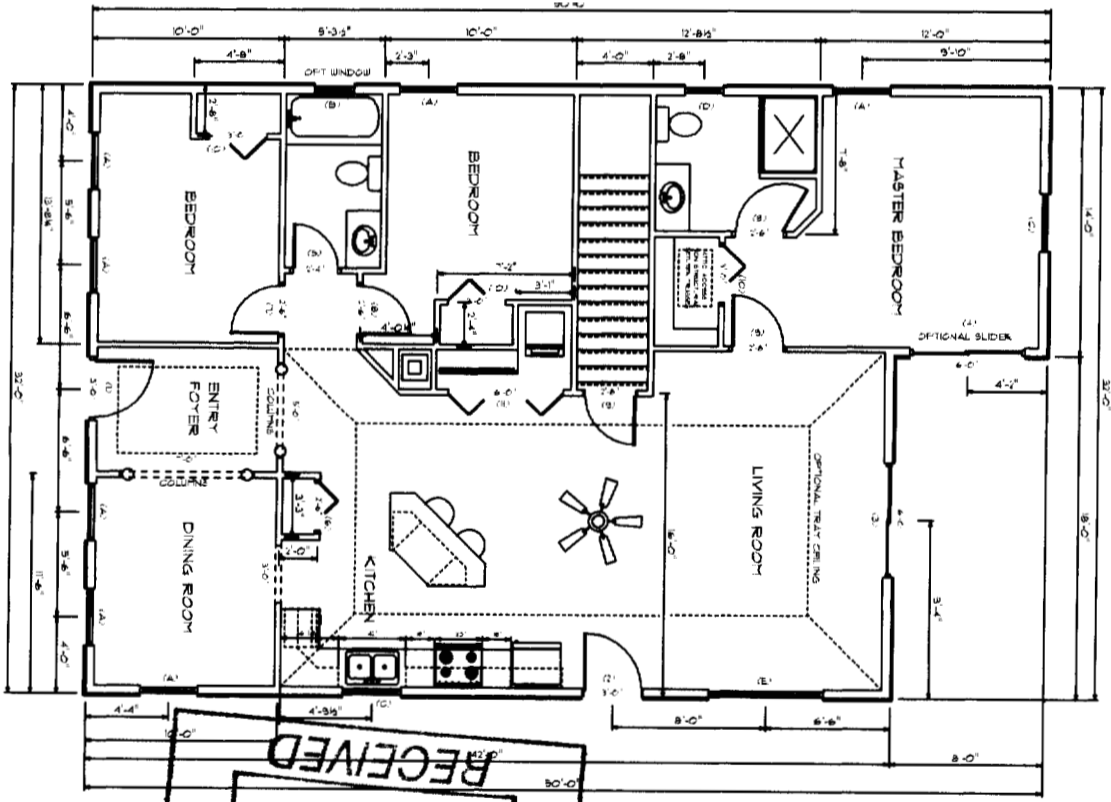
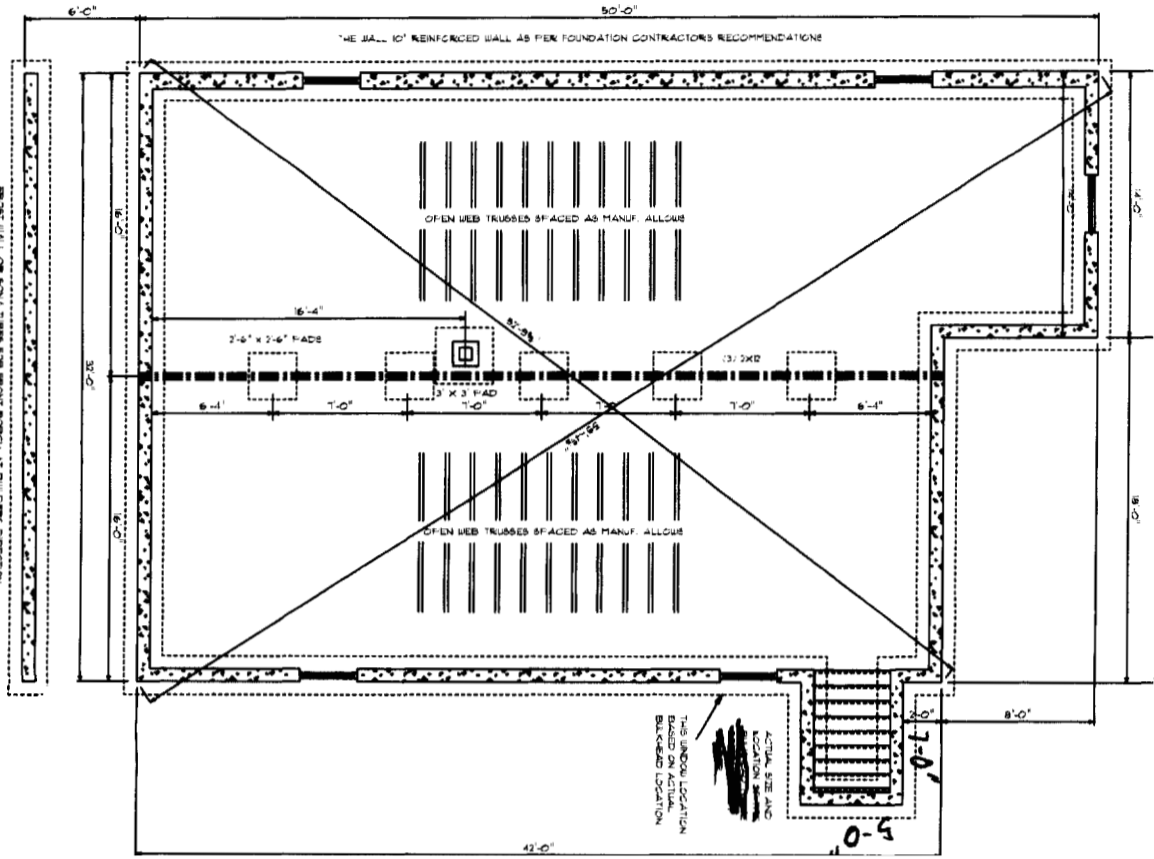
SCALE 1/4" = 1'

DATE 3/06

DRAWN BY J. CALL

PAGE 1 OF 3

IN ACCORDANCE WITH THESE DRAWINGS OWNERS REALIZE THAT THEY ARE FOR PICTORIAL REFERENCE ONLY. THEY FURTHER UNDERSTAND THAT HOUSE CALLS INC. IS NOT AN ARCHITECTURAL OR ENGINEERING COMPANY. THEY FURTHER UNDERSTAND THAT IT IS THE BUILDER OR GENERAL CONTRACTOR'S RESPONSIBILITY TO MEET THAT THIS HOME IS BUILT ACCORDING TO ALL STATE AND LOCAL BUILDING CODES THAT ARE IN EFFECT AT THE TIME OF CONSTRUCTION. THE OWNERS AND THE BUILDER WILL GO OVER THESE DRAWINGS BEFORE CONSTRUCTION STARTS TO VERIFY THAT THEY ARE SUITABLE FOR THEIR NEEDS AND TO VERIFY THAT ALL MEASUREMENTS ARE WHAT THEY WANT. IF ANY ERRORS ARE FOUND HCG WILL GLADLY CORRECT THEM BEFORE CONSTRUCTION STARTS.



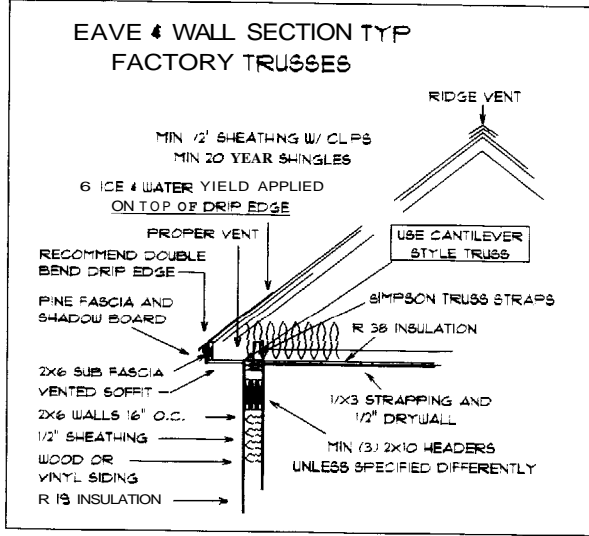
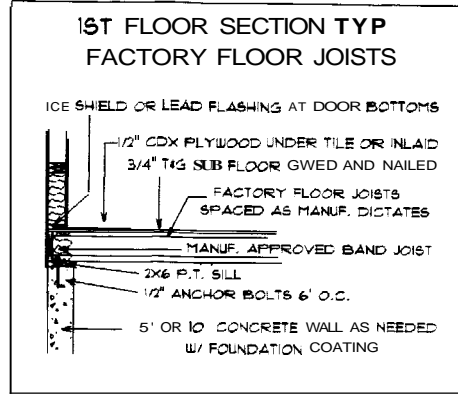
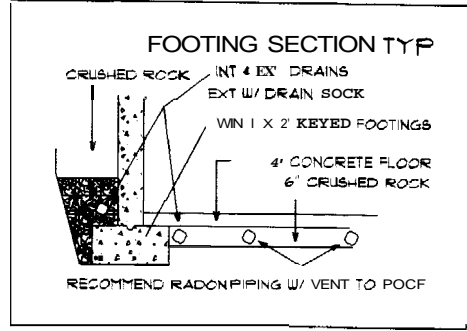
OWNER THAT ALL FOUNDATION REQUIREMENTS ARE MET. YOU WANT BEFORE CONSTRUCTION STARTS.
 ALL FOUNDATION WORK SHALL BE DONE BY A LICENSED CONTRACTOR.
 ALL FOUNDATION WORK SHALL BE DONE BY A LICENSED CONTRACTOR.
 ALL FOUNDATION WORK SHALL BE DONE BY A LICENSED CONTRACTOR.
 ALL FOUNDATION WORK SHALL BE DONE BY A LICENSED CONTRACTOR.

WINDOW SCHEDULE:
 ALL WINDOW AND DOOR SIZES SHALL BE AS SHOWN ON THESE DRAWINGS.
 ALL WINDOW AND DOOR SIZES SHALL BE AS SHOWN ON THESE DRAWINGS.
 ALL WINDOW AND DOOR SIZES SHALL BE AS SHOWN ON THESE DRAWINGS.
 ALL WINDOW AND DOOR SIZES SHALL BE AS SHOWN ON THESE DRAWINGS.

WINDOW SCHEDULE	ROOM DESIGNATION	SIZE AND STYLE
(1)	1	3'-0" x 6'-0" DOUBLE HUNG
(2)	2	3'-0" x 6'-0" DOUBLE HUNG
(3)	3	3'-0" x 6'-0" DOUBLE HUNG
(4)	4	3'-0" x 6'-0" DOUBLE HUNG
(5)	5	3'-0" x 6'-0" DOUBLE HUNG
(6)	6	3'-0" x 6'-0" DOUBLE HUNG
(7)	7	3'-0" x 6'-0" DOUBLE HUNG
(8)	8	3'-0" x 6'-0" DOUBLE HUNG
(9)	9	3'-0" x 6'-0" DOUBLE HUNG
(10)	10	3'-0" x 6'-0" DOUBLE HUNG
(11)	11	3'-0" x 6'-0" DOUBLE HUNG
(12)	12	3'-0" x 6'-0" DOUBLE HUNG
(13)	13	3'-0" x 6'-0" DOUBLE HUNG
(14)	14	3'-0" x 6'-0" DOUBLE HUNG
(15)	15	3'-0" x 6'-0" DOUBLE HUNG
(16)	16	3'-0" x 6'-0" DOUBLE HUNG
(17)	17	3'-0" x 6'-0" DOUBLE HUNG
(18)	18	3'-0" x 6'-0" DOUBLE HUNG
(19)	19	3'-0" x 6'-0" DOUBLE HUNG
(20)	20	3'-0" x 6'-0" DOUBLE HUNG
(21)	21	3'-0" x 6'-0" DOUBLE HUNG
(22)	22	3'-0" x 6'-0" DOUBLE HUNG
(23)	23	3'-0" x 6'-0" DOUBLE HUNG
(24)	24	3'-0" x 6'-0" DOUBLE HUNG
(25)	25	3'-0" x 6'-0" DOUBLE HUNG
(26)	26	3'-0" x 6'-0" DOUBLE HUNG
(27)	27	3'-0" x 6'-0" DOUBLE HUNG
(28)	28	3'-0" x 6'-0" DOUBLE HUNG
(29)	29	3'-0" x 6'-0" DOUBLE HUNG
(30)	30	3'-0" x 6'-0" DOUBLE HUNG
(31)	31	3'-0" x 6'-0" DOUBLE HUNG
(32)	32	3'-0" x 6'-0" DOUBLE HUNG
(33)	33	3'-0" x 6'-0" DOUBLE HUNG
(34)	34	3'-0" x 6'-0" DOUBLE HUNG
(35)	35	3'-0" x 6'-0" DOUBLE HUNG
(36)	36	3'-0" x 6'-0" DOUBLE HUNG
(37)	37	3'-0" x 6'-0" DOUBLE HUNG
(38)	38	3'-0" x 6'-0" DOUBLE HUNG
(39)	39	3'-0" x 6'-0" DOUBLE HUNG
(40)	40	3'-0" x 6'-0" DOUBLE HUNG
(41)	41	3'-0" x 6'-0" DOUBLE HUNG
(42)	42	3'-0" x 6'-0" DOUBLE HUNG
(43)	43	3'-0" x 6'-0" DOUBLE HUNG
(44)	44	3'-0" x 6'-0" DOUBLE HUNG
(45)	45	3'-0" x 6'-0" DOUBLE HUNG
(46)	46	3'-0" x 6'-0" DOUBLE HUNG
(47)	47	3'-0" x 6'-0" DOUBLE HUNG
(48)	48	3'-0" x 6'-0" DOUBLE HUNG
(49)	49	3'-0" x 6'-0" DOUBLE HUNG
(50)	50	3'-0" x 6'-0" DOUBLE HUNG
(51)	51	3'-0" x 6'-0" DOUBLE HUNG
(52)	52	3'-0" x 6'-0" DOUBLE HUNG
(53)	53	3'-0" x 6'-0" DOUBLE HUNG
(54)	54	3'-0" x 6'-0" DOUBLE HUNG
(55)	55	3'-0" x 6'-0" DOUBLE HUNG
(56)	56	3'-0" x 6'-0" DOUBLE HUNG
(57)	57	3'-0" x 6'-0" DOUBLE HUNG
(58)	58	3'-0" x 6'-0" DOUBLE HUNG
(59)	59	3'-0" x 6'-0" DOUBLE HUNG
(60)	60	3'-0" x 6'-0" DOUBLE HUNG
(61)	61	3'-0" x 6'-0" DOUBLE HUNG
(62)	62	3'-0" x 6'-0" DOUBLE HUNG
(63)	63	3'-0" x 6'-0" DOUBLE HUNG
(64)	64	3'-0" x 6'-0" DOUBLE HUNG
(65)	65	3'-0" x 6'-0" DOUBLE HUNG
(66)	66	3'-0" x 6'-0" DOUBLE HUNG
(67)	67	3'-0" x 6'-0" DOUBLE HUNG
(68)	68	3'-0" x 6'-0" DOUBLE HUNG
(69)	69	3'-0" x 6'-0" DOUBLE HUNG
(70)	70	3'-0" x 6'-0" DOUBLE HUNG
(71)	71	3'-0" x 6'-0" DOUBLE HUNG
(72)	72	3'-0" x 6'-0" DOUBLE HUNG
(73)	73	3'-0" x 6'-0" DOUBLE HUNG
(74)	74	3'-0" x 6'-0" DOUBLE HUNG
(75)	75	3'-0" x 6'-0" DOUBLE HUNG
(76)	76	3'-0" x 6'-0" DOUBLE HUNG
(77)	77	3'-0" x 6'-0" DOUBLE HUNG
(78)	78	3'-0" x 6'-0" DOUBLE HUNG
(79)	79	3'-0" x 6'-0" DOUBLE HUNG
(80)	80	3'-0" x 6'-0" DOUBLE HUNG
(81)	81	3'-0" x 6'-0" DOUBLE HUNG
(82)	82	3'-0" x 6'-0" DOUBLE HUNG
(83)	83	3'-0" x 6'-0" DOUBLE HUNG
(84)	84	3'-0" x 6'-0" DOUBLE HUNG
(85)	85	3'-0" x 6'-0" DOUBLE HUNG
(86)	86	3'-0" x 6'-0" DOUBLE HUNG
(87)	87	3'-0" x 6'-0" DOUBLE HUNG
(88)	88	3'-0" x 6'-0" DOUBLE HUNG
(89)	89	3'-0" x 6'-0" DOUBLE HUNG
(90)	90	3'-0" x 6'-0" DOUBLE HUNG
(91)	91	3'-0" x 6'-0" DOUBLE HUNG
(92)	92	3'-0" x 6'-0" DOUBLE HUNG
(93)	93	3'-0" x 6'-0" DOUBLE HUNG
(94)	94	3'-0" x 6'-0" DOUBLE HUNG
(95)	95	3'-0" x 6'-0" DOUBLE HUNG
(96)	96	3'-0" x 6'-0" DOUBLE HUNG
(97)	97	3'-0" x 6'-0" DOUBLE HUNG
(98)	98	3'-0" x 6'-0" DOUBLE HUNG
(99)	99	3'-0" x 6'-0" DOUBLE HUNG
(100)	100	3'-0" x 6'-0" DOUBLE HUNG

RECEIVED
 CON 2 6 2006
 DEPT. OF BUILDING INSPECTION
 WINDHAM, ME

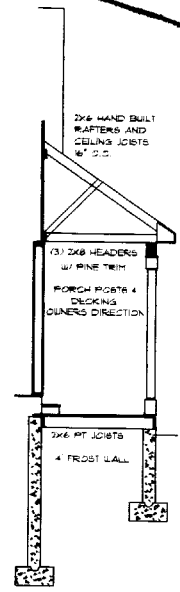
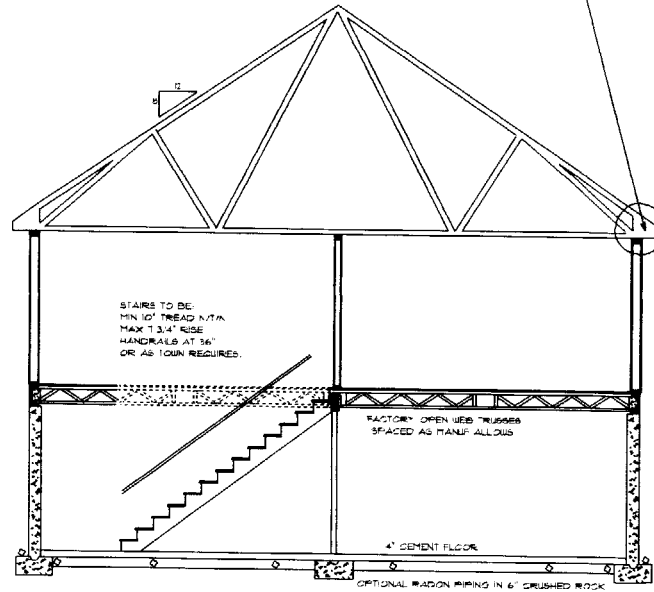
HOUSE CALLS INC. HOME PLANNING & DESIGN 151 ROOSEVELT TRAIL, WINDHAM, ME	LOT 5, RUBY LANE, PORTLAND	SCALE 1/4" = 1'	DRAWN BY J. CALL	IN ACCEPTING THESE DRAWINGS, OWNERS REALIZE THAT THEY ARE FOR PICTORIAL REFERENCE ONLY. THEY FURTHER UNDERSTAND THAT IT IS NOT AN ARCHITECTURAL OR ENGINEERING COMPANY. THEY FURTHER UNDERSTAND THAT IT IS THE BUILDER OR GENERAL CONTRACTOR'S RESPONSIBILITY TO SEE THAT THIS HOME IS BUILT ACCORDING TO ALL STATE AND LOCAL BUILDING CODES THAT ARE IN EFFECT AT THE TIME OF CONSTRUCTION. THE OWNER AND THE BUILDER WILL GO OVER THESE DRAWINGS BEFORE CONSTRUCTION STARTS TO VERIFY THAT THEY ARE SUITABLE FOR THEIR NEEDS, AND TO VERIFY THAT ALL REQUIREMENTS ARE WHAT THEY WANT. IF ANY ERRORS ARE FOUND, HCI WILL GLADLY CORRECT THEM BEFORE CONSTRUCTION STARTS.
	FLOOR PLAN & FOUNDATION	DATE 4/06	SHEET NO. 2 OF 3	



BUILDER TO GO OVW PLANS AND STRUCTURALS BEFORE CONSTRUCTION. IF THERE ARE ANY QUESTIONS PLEASE CALL JOHN AT HOUSE CALLS

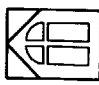
THE OWNER OR THE BUILDER HAS HOUSE CALLS PERMISSION TO ADD T3 OR DELETE FROM ANY DETAIL NOTES AND/OR SPECIFICATIONS ON THESE PLANS AS MAY BE NECESSARY FOR TOWN PERMITS (THIS IS NOT PERMISSION TO CHANGE THE NAMES OR IN ANY WAY VIOLATE H.C.D.'S COPY RIGHT)

TRUSSER SHOWN ARE REPRESENTATIONS ONLY - ACTUAL TRUSSER ARE TO BE DESIGNED BY THE MANUFACTURER. USE CANTILEVER STYLE TRUSSES FOR BETTER INSULATION ABOVE THE WALLS - SEE DETAIL BELOW. ALL TRUSS MEASUREMENTS TO BE TAKEN OFF FLOOR PLAN.



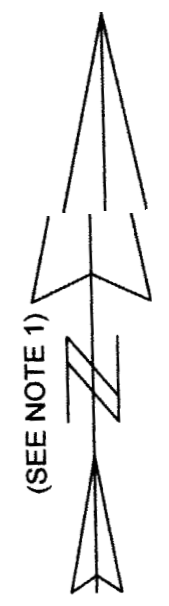
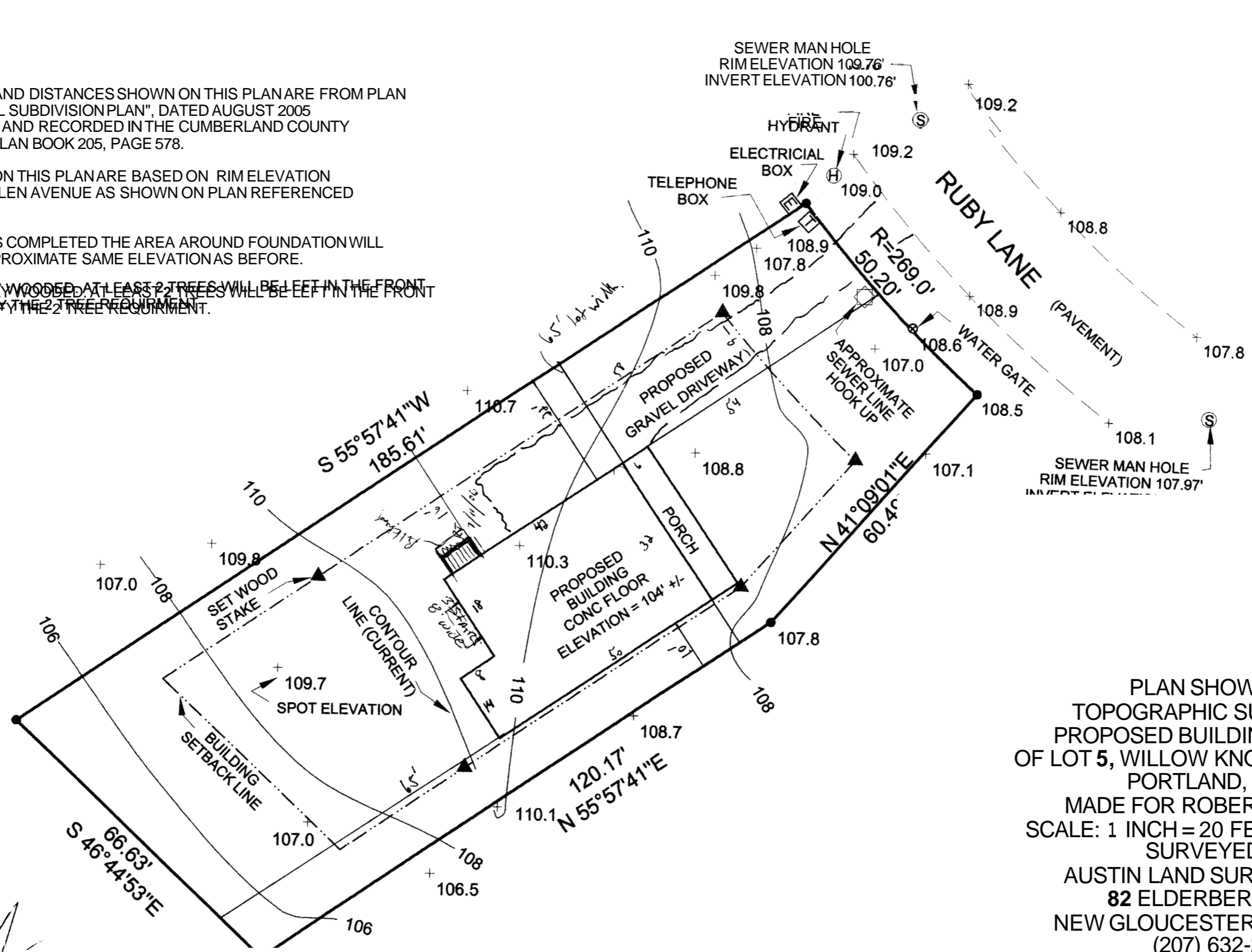
RECEIVED
2006
THESE DRAWINGS ARE COPY WRITTEN, AND AS SUCH CANNOT BE COPIED, REPRODUCED, OR GIVEN TO A THIRD PARTY WITHOUT THE WRITTEN PERMISSION FROM HOUSE CALLS INC. THEY ARE TO BE USED FOR THE CONSTRUCTION OF THE HOME ONLY AT THE ADDRESS NAMED ON THESE DRAWINGS.
USE OR REPRODUCTION OF THESE DRAWINGS VIOLATES FEDERAL COPYRIGHT LAWS

342 B 45

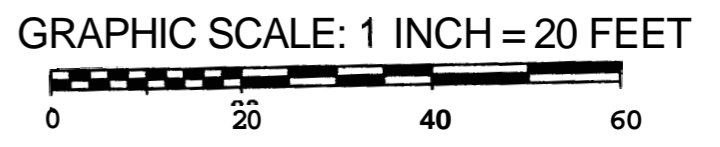
 HOUSE CALLS INC. HOME PLANNING & DESIGN 151 ROOSEVELT TRAIL, WINDHAM, ME	DRAWING NO. 342 B 45 DATE 4/06	SHEET NO. 3 OF 3
	PROJECT ADDRESS: LOT 5, RUBY LANE, PORTLAND	DRAWING TYPE: STRUCTURALS

NOTES:

- 1.) MAGNETIC BEARINGS AND DISTANCES SHOWN ON THIS PLAN ARE FROM PLAN ENTITLED "WILLOW KNOLL SUBDIVISION PLAN", DATED AUGUST 2005 BY TITCOMB ASSOCIATES AND RECORDED IN THE CUMBERLAND COUNTY REGISTRY OF DEEDS IN PLAN BOOK 205, PAGE 578.
- 2.) ELEVATIONS SHOWN ON THIS PLAN ARE BASED ON RIM ELEVATION OF A CATCH BASIN ON ALLEN AVENUE AS SHOWN ON PLAN REFERENCED IN NOTE 1.
- 3.) AFTER FOUNDATION IS COMPLETED THE AREA AROUND FOUNDATION WILL BE PUT BACK AT THE APPROXIMATE SAME ELEVATION AS BEFORE.
- 4.) ~~THE LOTS CURRENTLY WOODED. AT LEAST 2 TREES WILL BE LEFT IN THE FRONT OF THE HOUSE TO SATISFY THE 2 TREE REQUIREMENT.~~



PLAN SHOWING A
 TOPOGRAPHIC SURVEY AND
 PROPOSED BUILDING LOCATION
 OF LOT 5, WILLOW KNOLL SUBDIVISION,
 PORTLAND, MAINE
 MADE FOR ROBERT TWOMBLY
 SCALE: 1 INCH = 20 FEET MAY 19, 2006
 SURVEYED BY:
 AUSTIN LAND SURVEYING, LLC
 82 ELDERBERRY LANE
 NEW GLOUCESTER, MAINE 04260
 (207) 632-2959



5/8 INCH IRON ROD
 FOUND WITH PLASTIC
 AP MARKED "TITCOMB ASSOCIATES
 PLS 2204" (TYPICAL)

WGA
 WILLIAM G. AUSTIN
 STATE OF MAINE
 PROFESSIONAL LAND SURVEYOR 2174