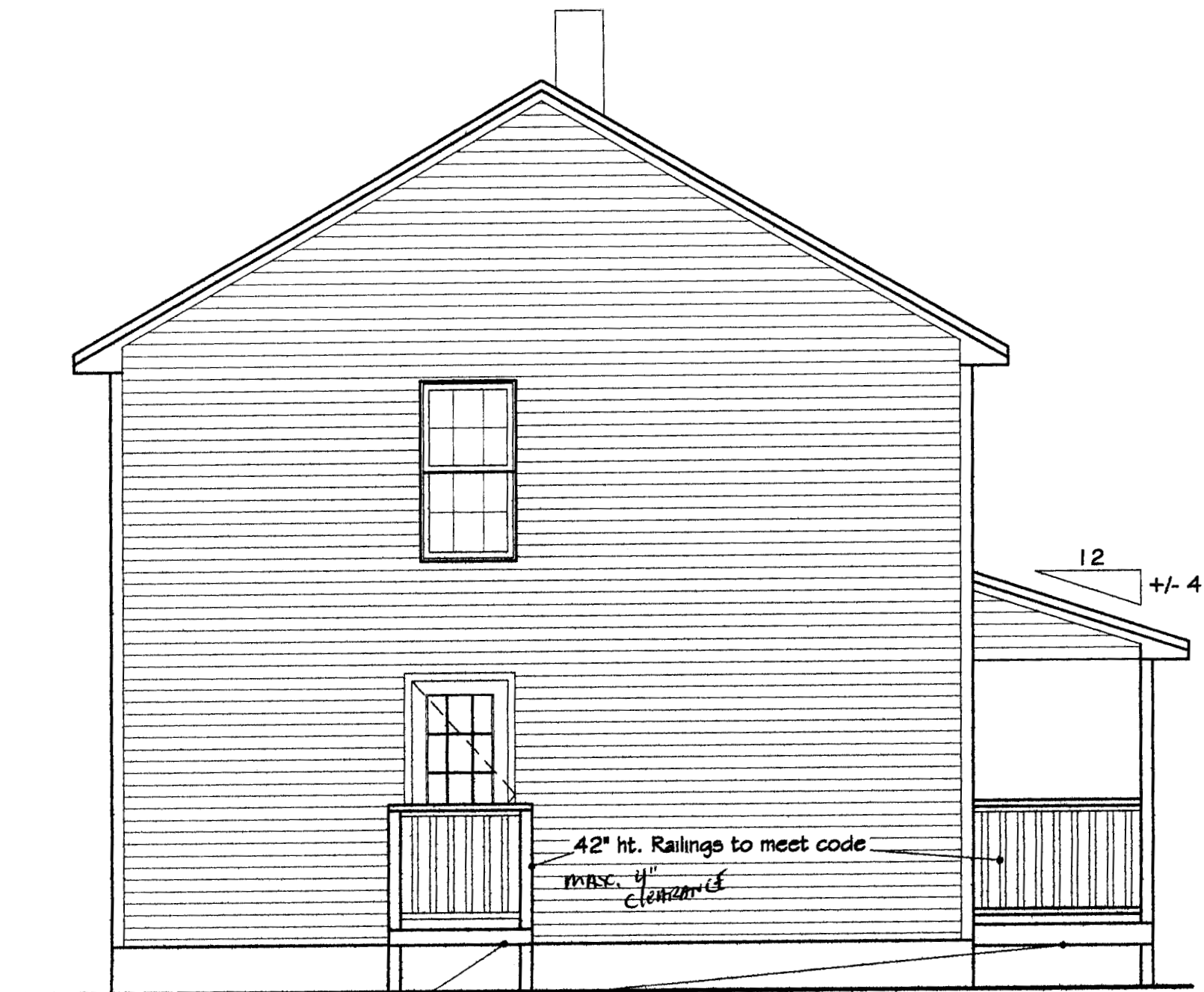




42" ht. Railings (Typ.)  
Meet codes

**RIGHT ELEVATION**

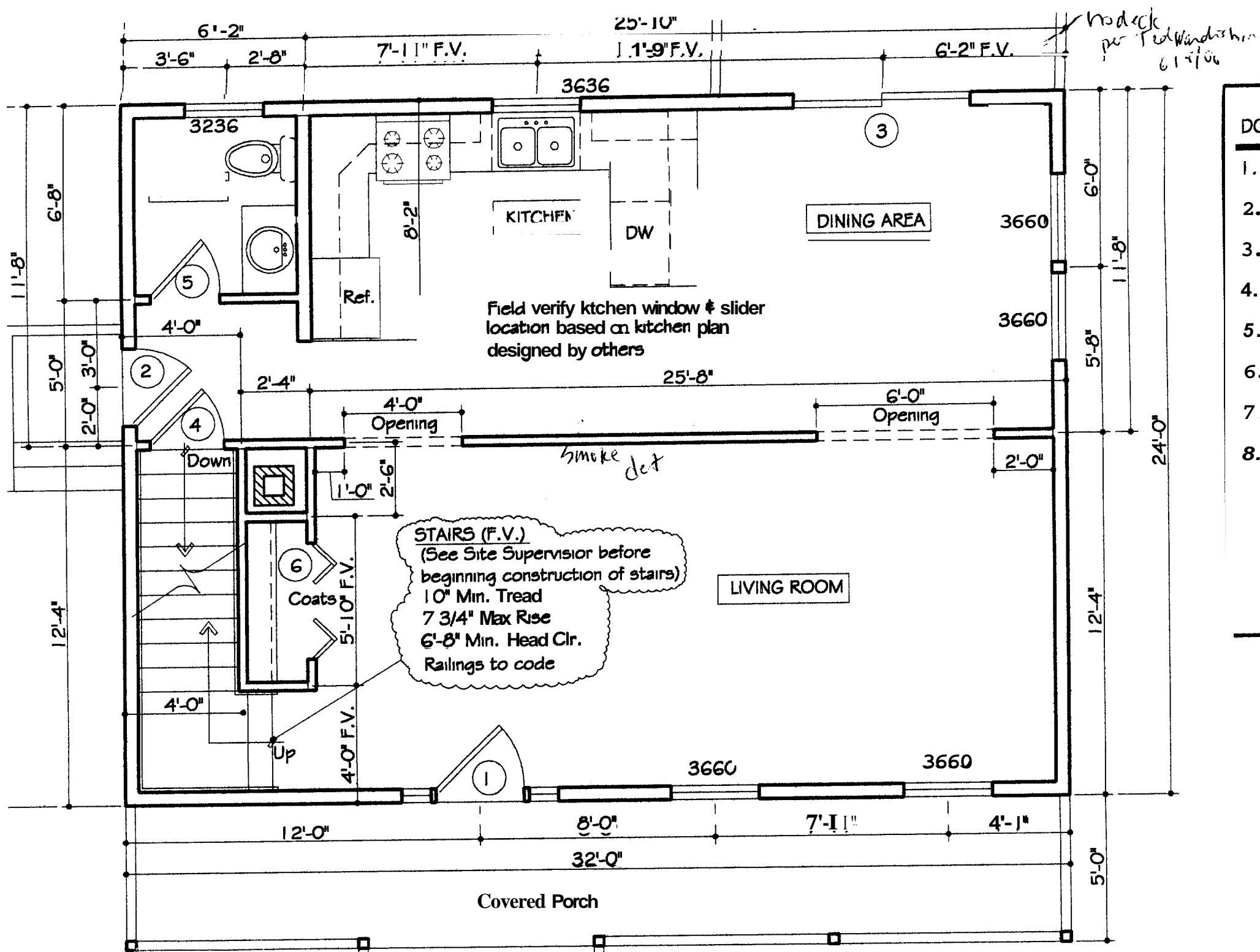
Scale: N.T.S.



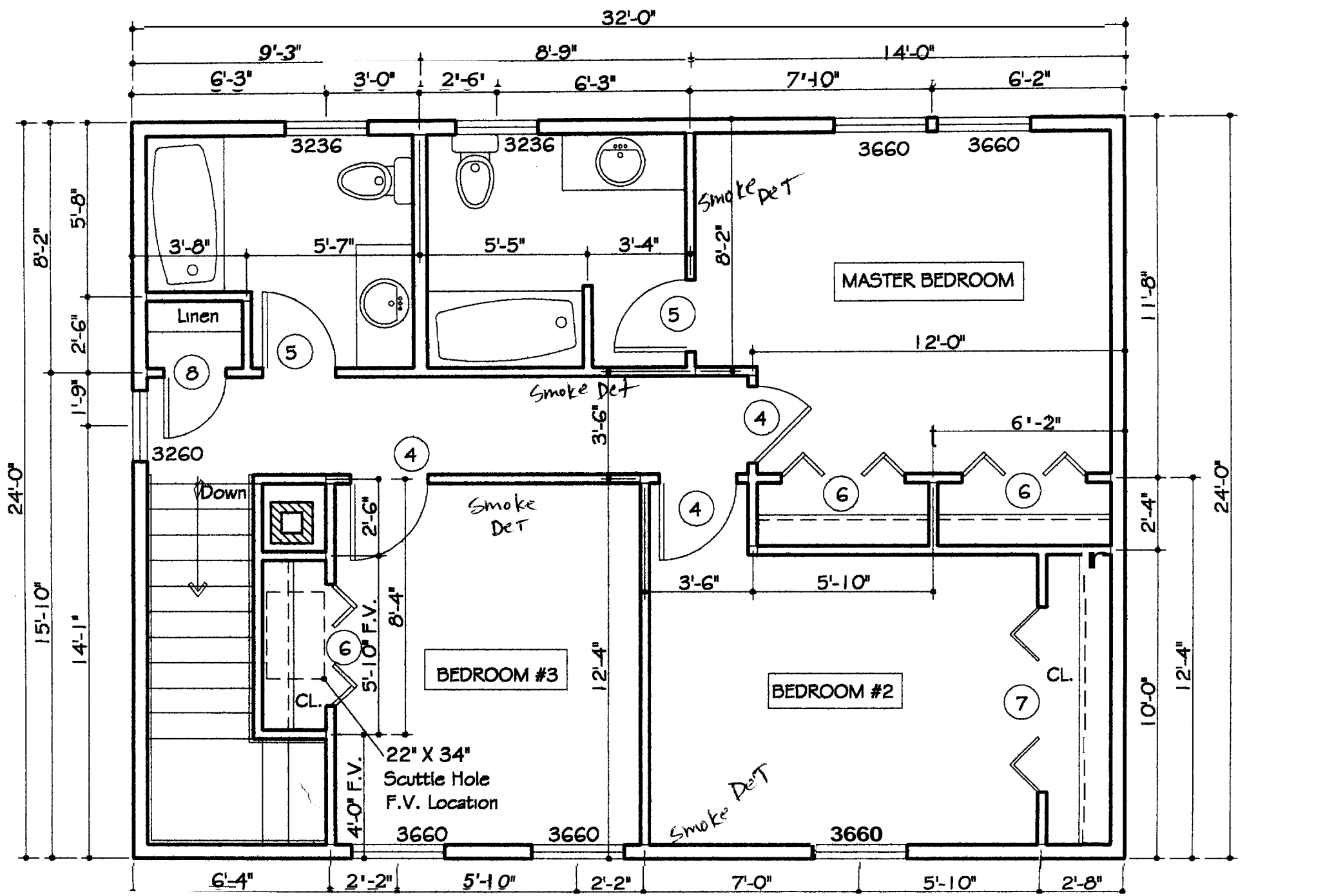
Field verify access  
to ground level  
Meet stair codes

**LEFT ELEVATION**

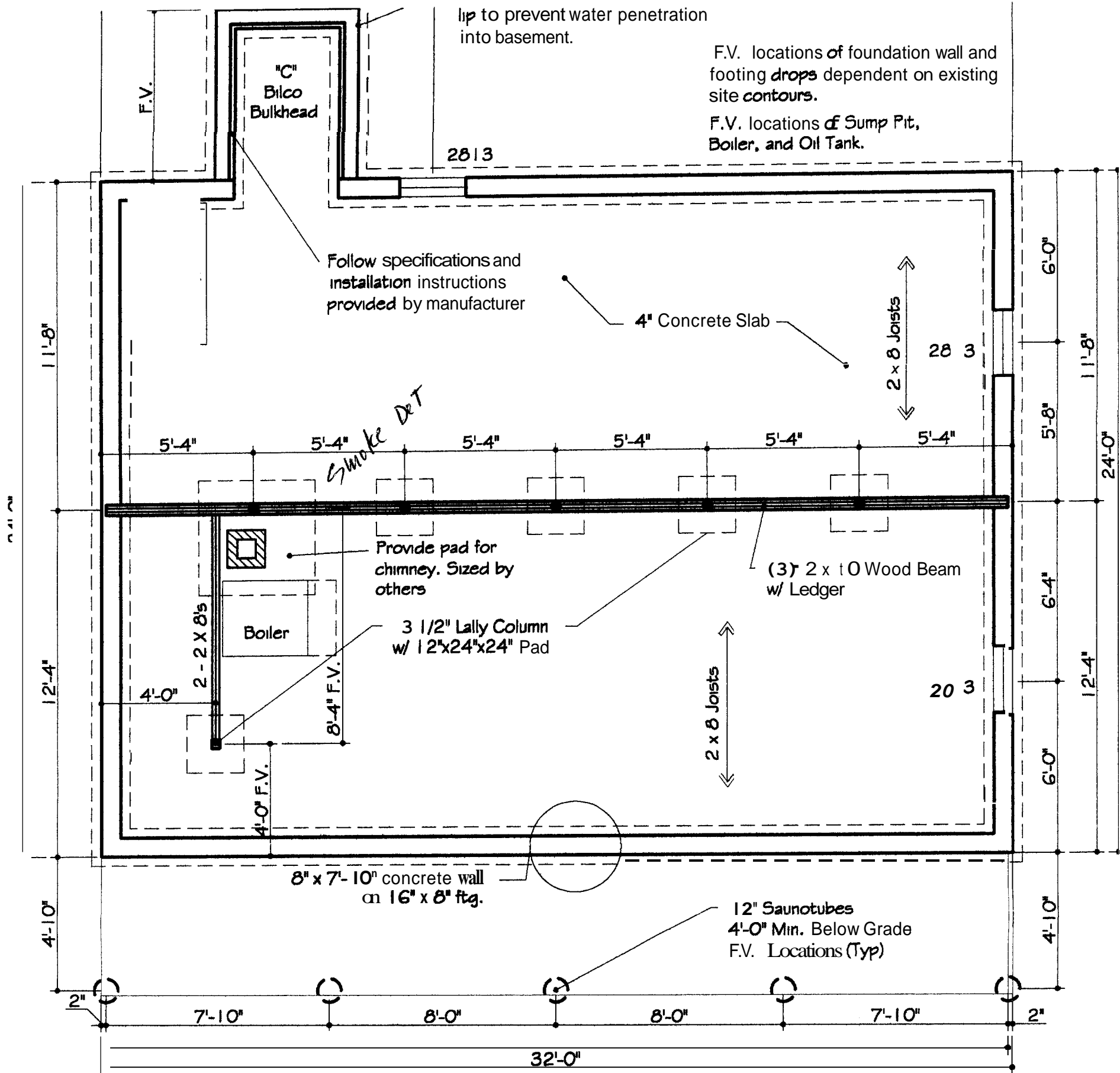
Scale: N.T.S.



**FIRST FLOOR PLAN**  
Scale: 1/4" = 1'-0"

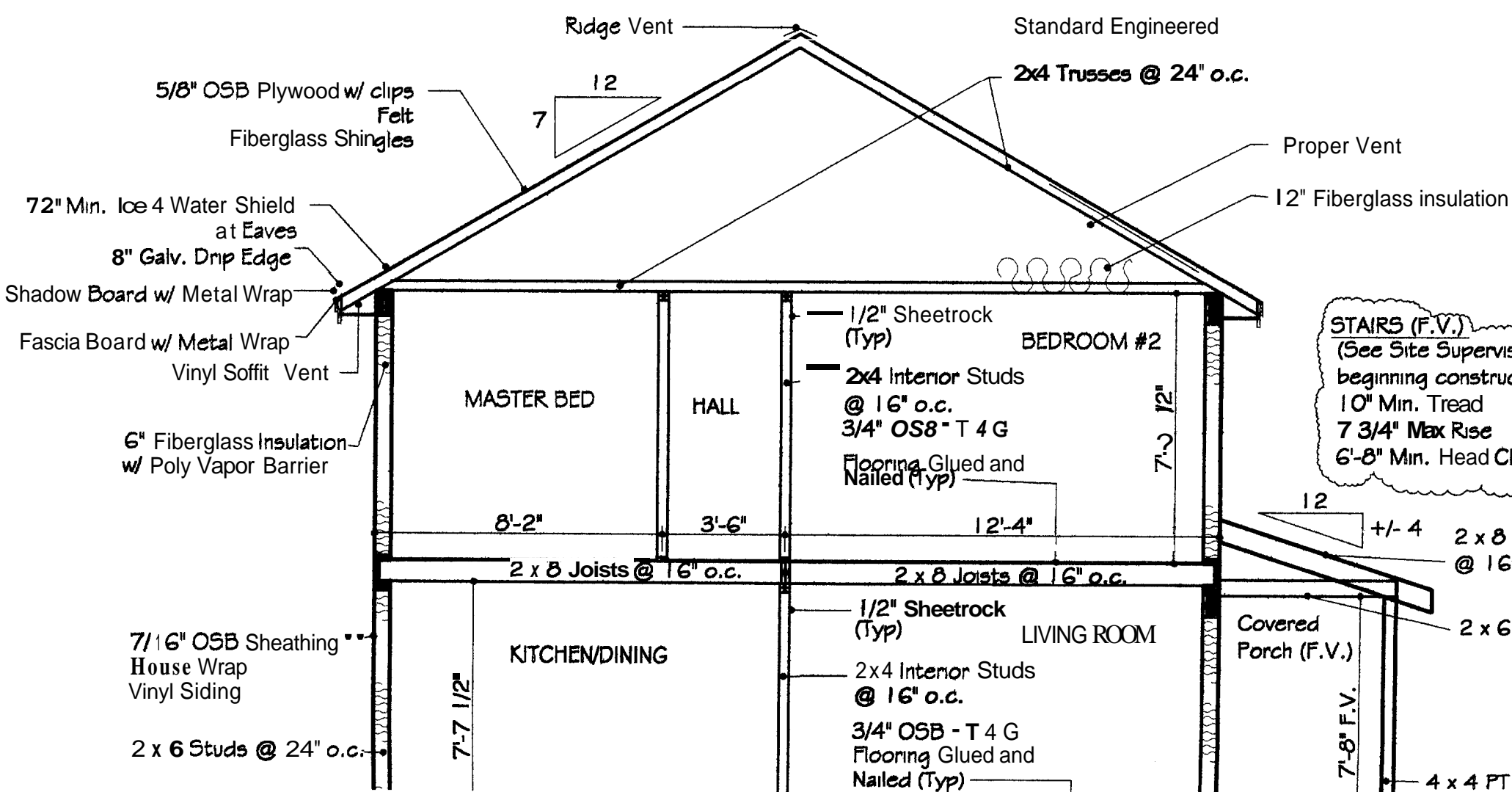


DOOR
1. 3'
2. 2'
3. 6'
4. 2'
5. 2'
6. 4'
7. 6'
8. 2'



### FOUNDATION PLAN

Scale: 1/4" = 1'-0"



**STAIRS (F.V.)**  
 (See Site Supervisors  
 beginning construction)  
 10" Min. Tread  
 7 3/4" Max Rise  
 6'-8" Min. Head Clearance

