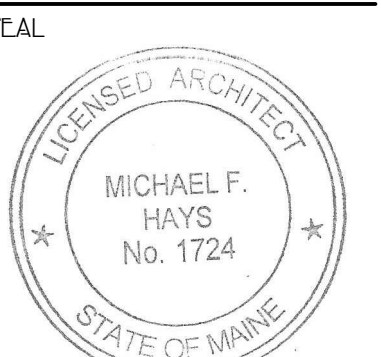


GRANT HAYS  
ASSOCIATES

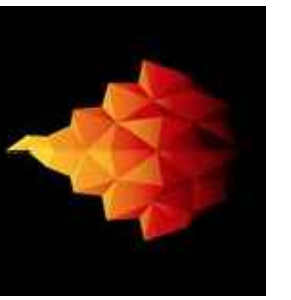
ARCHITECTURE & INTERIOR DESIGN  
P.O. BOX 6179 FALMOUTH MAINE 04105  
207.871.5900 www.granthays.com



Michael F. Hays

REVISIONS  
25 APR 2017

DRAWING NAME



GOODFIRE  
BREWING COMPANY  
219 ANDERSON STREET  
PORTLAND, MAINE 04102

SHEET

DEMOLITION  
PLAN

DATE  
13 FEB 2017

SCALE  
1/4"=1'-0"

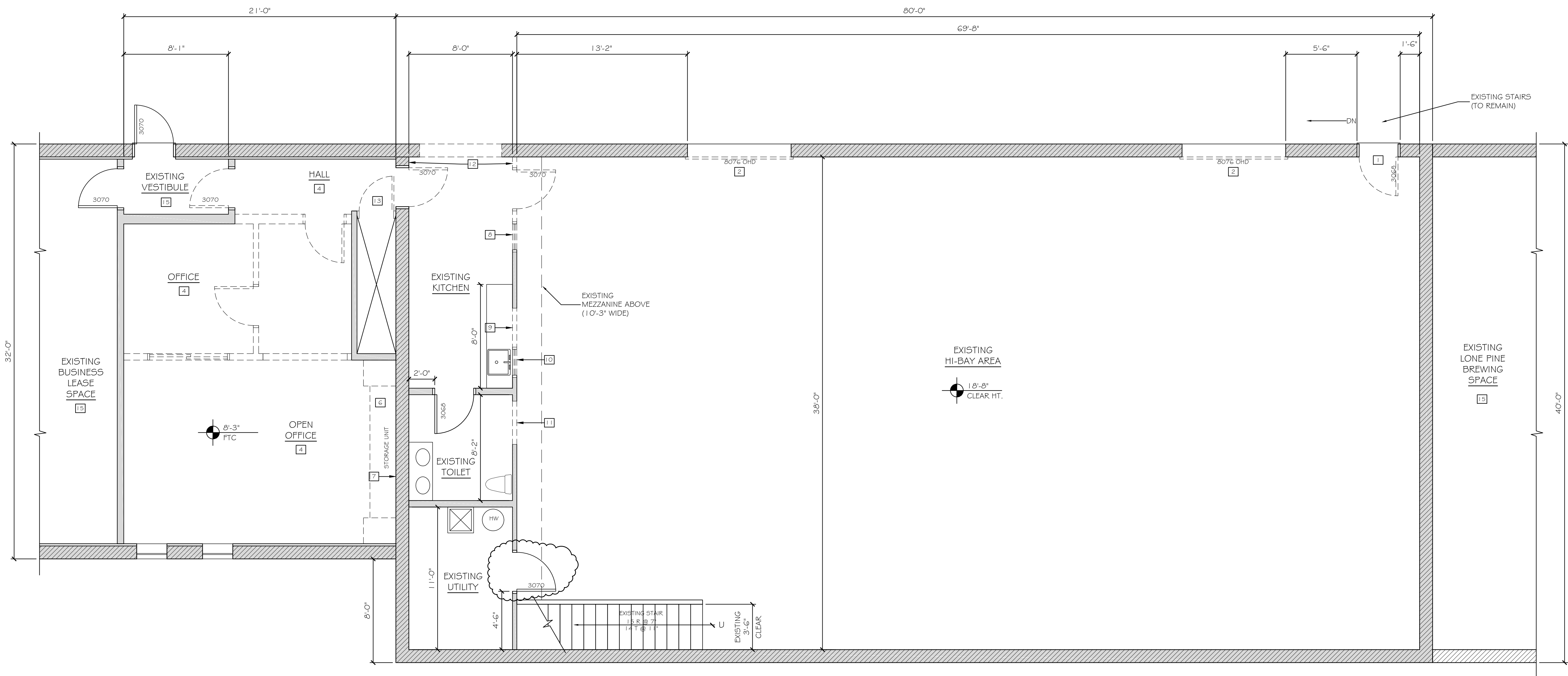
DRAWN  
MFH/mgk

JOB NO.  
161001

SHEET

AD-1

COPYRIGHT  
REPRODUCTION OR RELY OF THIS  
DOCUMENT WITHOUT WRITTEN  
PERMISSION FROM GRANT HAYS  
ASSOCIATES IS PROHIBITED.



EXISTING CONDITIONS / DEMOLITION FLOOR PLAN

SCALE: 1/4" = 1'-0"



DEMOLITION NOTES LEGEND

1 REMOVE EXTERIOR DOOR AND FRAME. PREP MASONRY OPENING FOR NEW DOOR AND FRAME.	7 REMOVE ALL FRAMING AND FINISHES BACK TO EXISTING MASONRY WALL SURFACE.
2 REMOVE EXTERIOR OVERHEAD DOOR. PREP MASONRY OPENING FOR NEW OVERHEAD DOOR.	8 REMOVE EXISTING DOOR, FRAME, WINDOW, AND PARTITION FOR NEW OPENING.
3 REMOVE EXTERIOR CMU INFILL AT EXISTING MASONRY OPENING. PREP MASONRY OPENING FOR NEW DOORS AND FRAME.	9 REMOVE EXISTING WALL FOR NEW 36" X 36" PASS-THRU.
4 REMOVE ALL INTERIOR PARTITIONS, DOORS, FRAMES, SUSPENDED CEILINGS/LIGHTING, AND FLOOR FINISHES IN THIS AREA. PREP SURFACES FOR NEW FINISHES AND LIGHTING.	10 REMOVE EXISTING WINDOW AND INFILL TO MATCH ADJACENT PARTITION.
5 INFILL EXISTING FLOOR OPENING. SEE STRUCTURAL DRAWINGS.	11 REMOVE EXISTING WALL FOR NEW 3'-0" X 6'-8" DOOR.
6 REMOVE BUILT-IN STORAGE CABINETS & SHELVING AND ASSOCIATED FRAMING BACK TO MASONRY WALL SURFACE.	12 REMOVE EXISTING GWB/FURRING TO EXISTING BRICK (TO BE EXPOSED FINISH).
	13 REMOVE EXISTING GUARDRAIL.
	14 NO WORK (NIC).