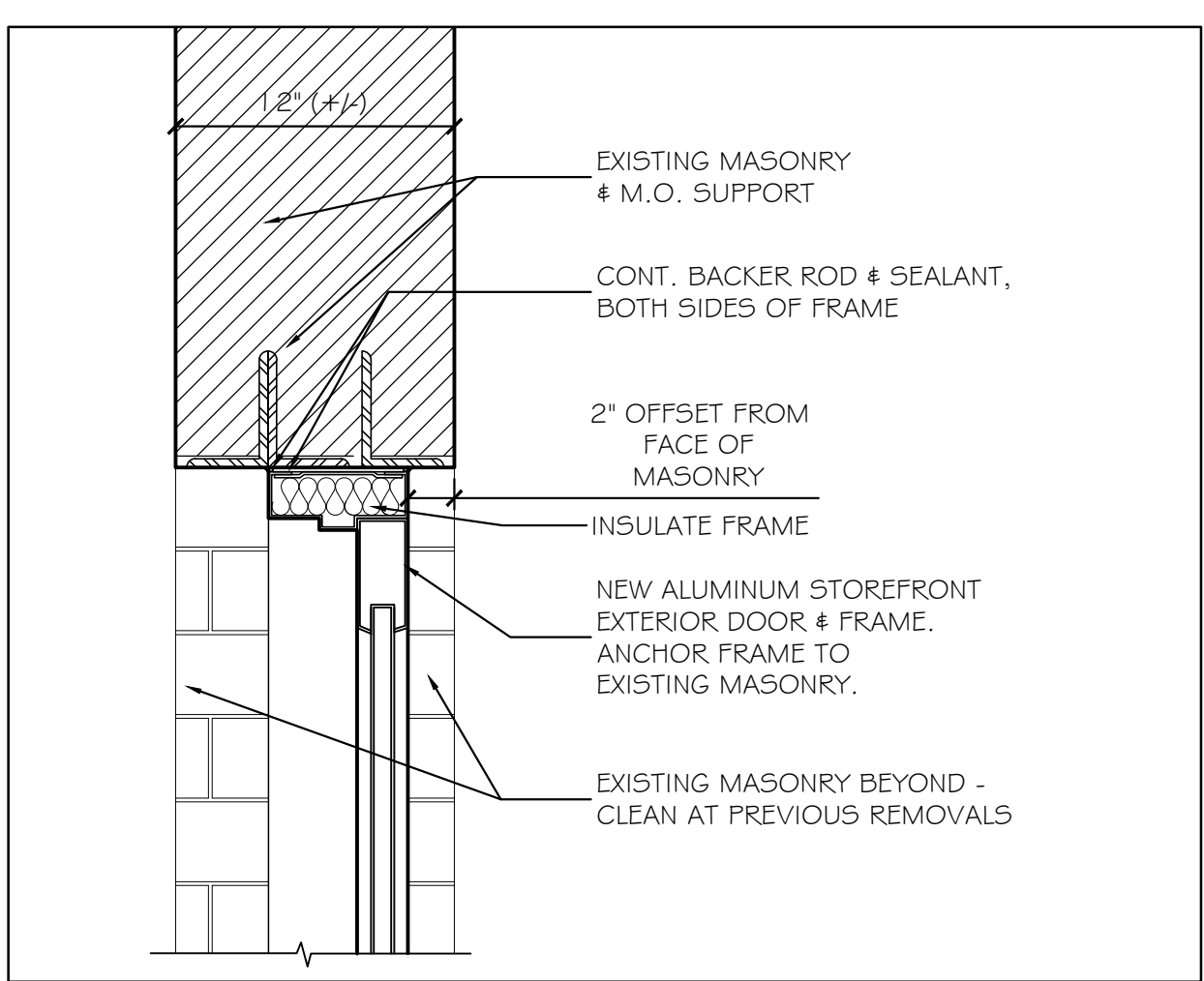


FINISH SCHEDULE

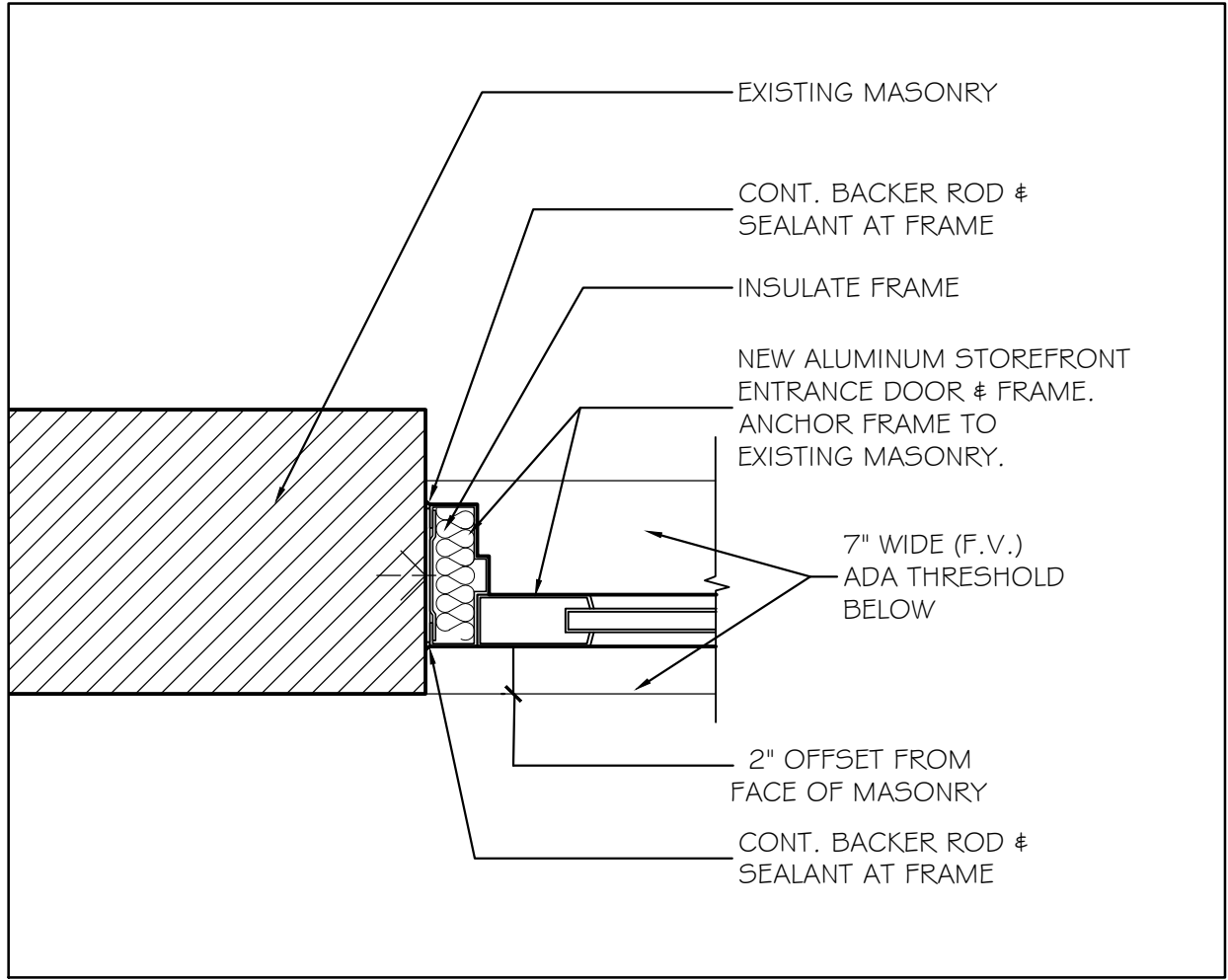
RM NO.	NAME	WALLS				FLOORS				CEILING A		CEILING B		REMARKS
		N	E	S	W	MAT'L	BASE	MAT'L	BASE	TYPE	HT.	TYPE	HT.	
201	TASTING ROOM	E/P	BRICK	---	---	E/P	E/P	---	---	E/P*	8'-3"	---	---	* CONC. PLANK
202	ENTRY	BRICK	---	P	E/P	FCS	E	---	---	E/P	---	---	---	---
203	KITCHEN	P	E/P	E/P	E/P	E	E/P	---	---	E/P	E	---	---	---
204	EXISTING WOMENS	E/P	E/P	E/P	E/P	E	E/P	---	---	E/P	E	---	---	---
205	MENS	E/P	E/P	E/P	E/P	E	E/P	---	---	E/P	E	---	---	---
206	TASTING ROOM	BRICK	PANELS*	BRICK	E/P	FCS	E / WD / P	---	VCB*	E	E	---	---	* @ COOLER
207	COOLER	P	P	P	P	FCS	PANELS	---	---	P	10'-0"	---	---	---
208	BREWERY PRODUCTION	BRICK/MIL*	BRICK	BRICK	P/E	FCS	---	---	---	E	E	---	---	* @ COOLER
209	SHIPPING / RECEIVING	BRICK	BRICK	---	PANELS*	FCS	---	---	---	E	E	---	---	* @ COOLER
210	BOILER ROOM	P	P	P	P	FCS	VCB	---	---	P	8'-0"	---	---	---
211	ELECTRICAL ROOM	P	P	P	P	FCS	VCB	---	---	P	8'-0"	---	---	---
212	MEZZANINE	BRICK	P	BRICK	BRICK	E/P	E/P	---	---	E	---	---	---	---

FINISH NOTES:

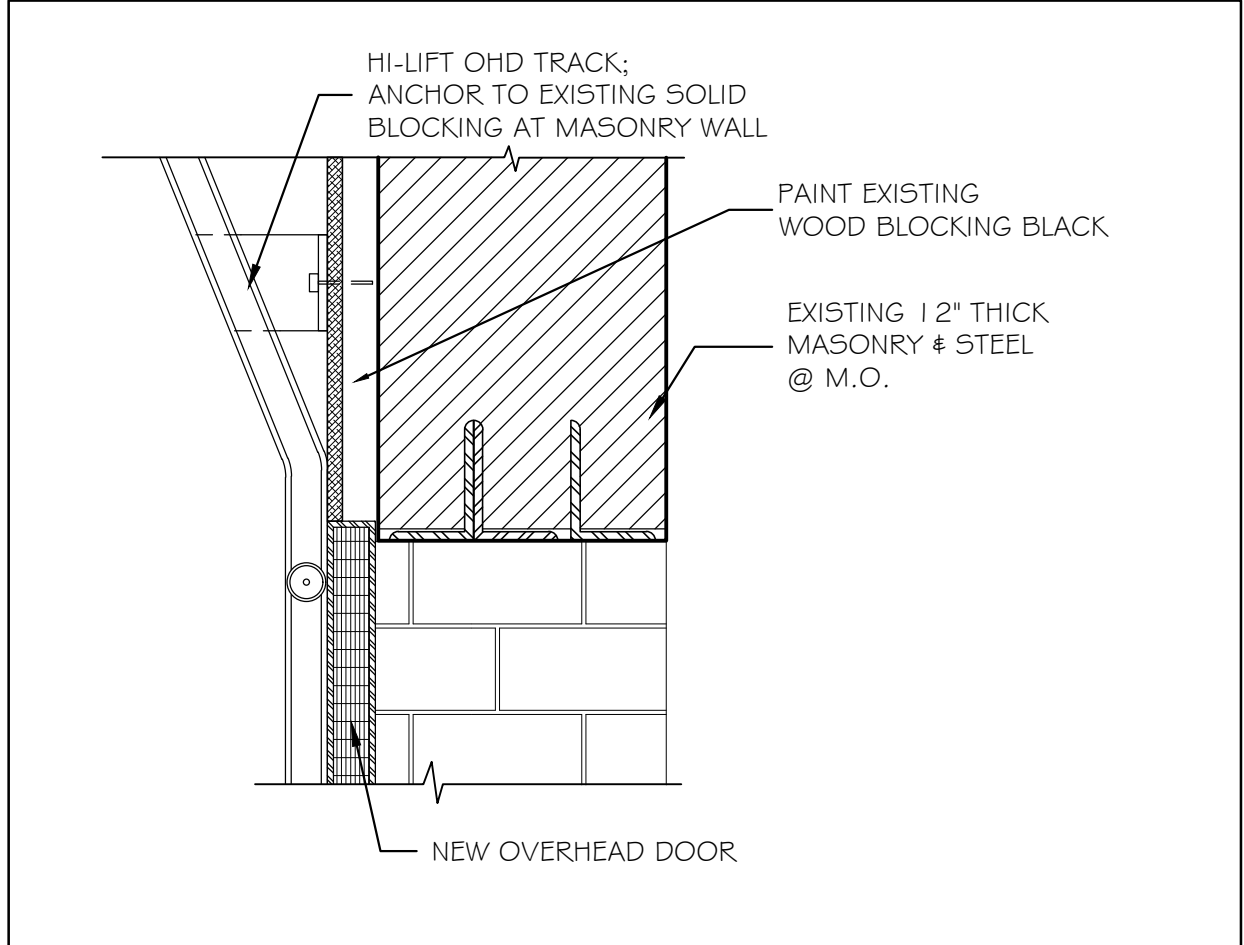
- COORDINATE FINISHING OF CONCRETE FLOOR @ TASTING ROOM 201 w/ OWNER AFTER REMOVAL OF EXISTING FLOORING.
- PAINT ALL EXISTING / NEW GWB FINISHES & WOOD WALL BASE TRIM.
- EXISTING BRICK & CONCRETE ROOF TS SHALL BE LEFT IN EXISTING CONDITION, U.N.O.
- PROVIDE TRANSITION STRIPS AT CHANGES IN FLOORING MATERIALS.
- REFINISH EXISTING VCT FLOORING TO REMAIN AT [203], [204], & [205].
- FCS = EPOXY FLOOR SYSTEM - COLOR AS SELECTED BY OWNER.



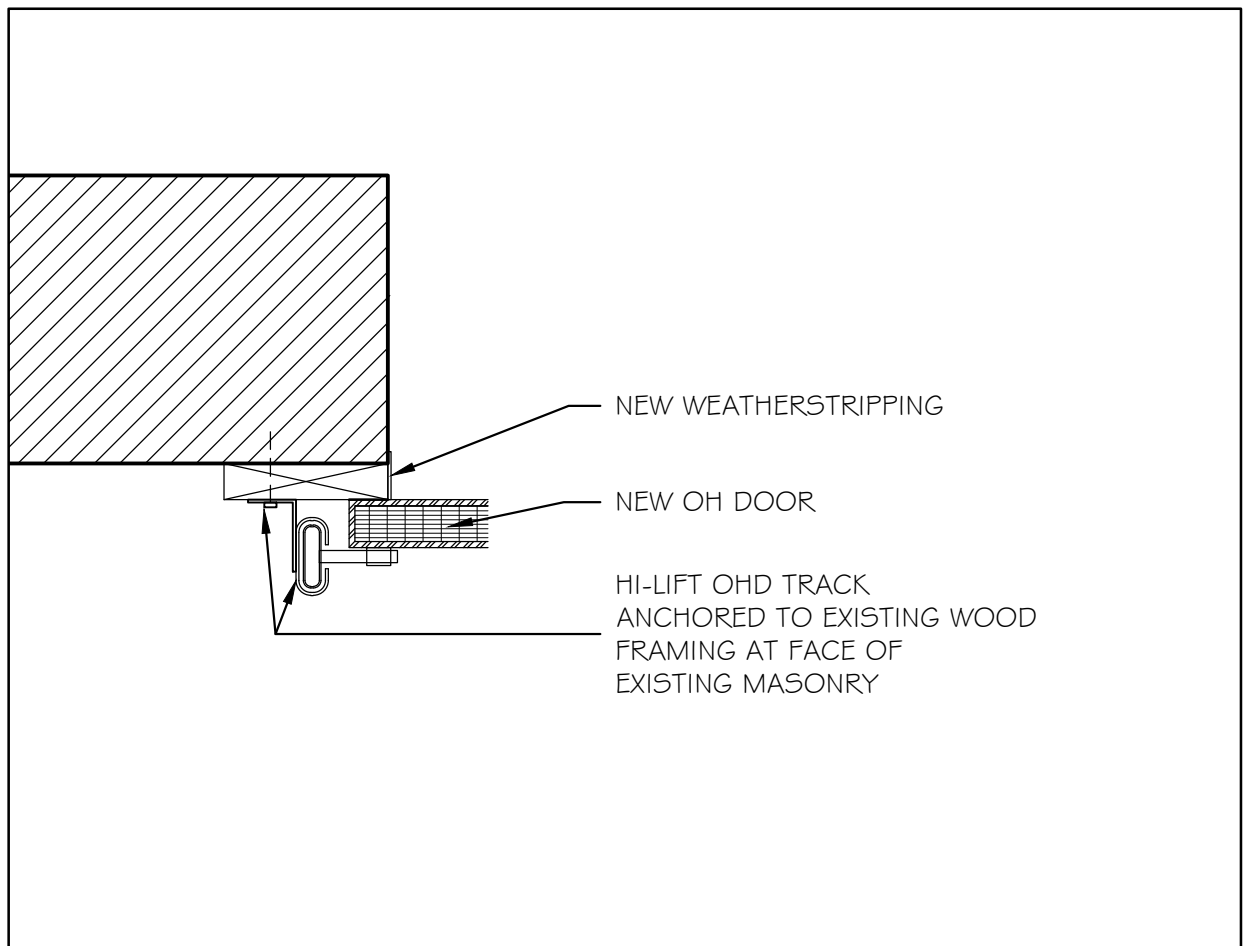
7 EXT. ALUMINUM DOOR HEAD DETAIL 1 1/2" = 1'-0"



8 EXT. ALUMINUM DOOR JAMB DETAIL 1 1/2" = 1'-0"



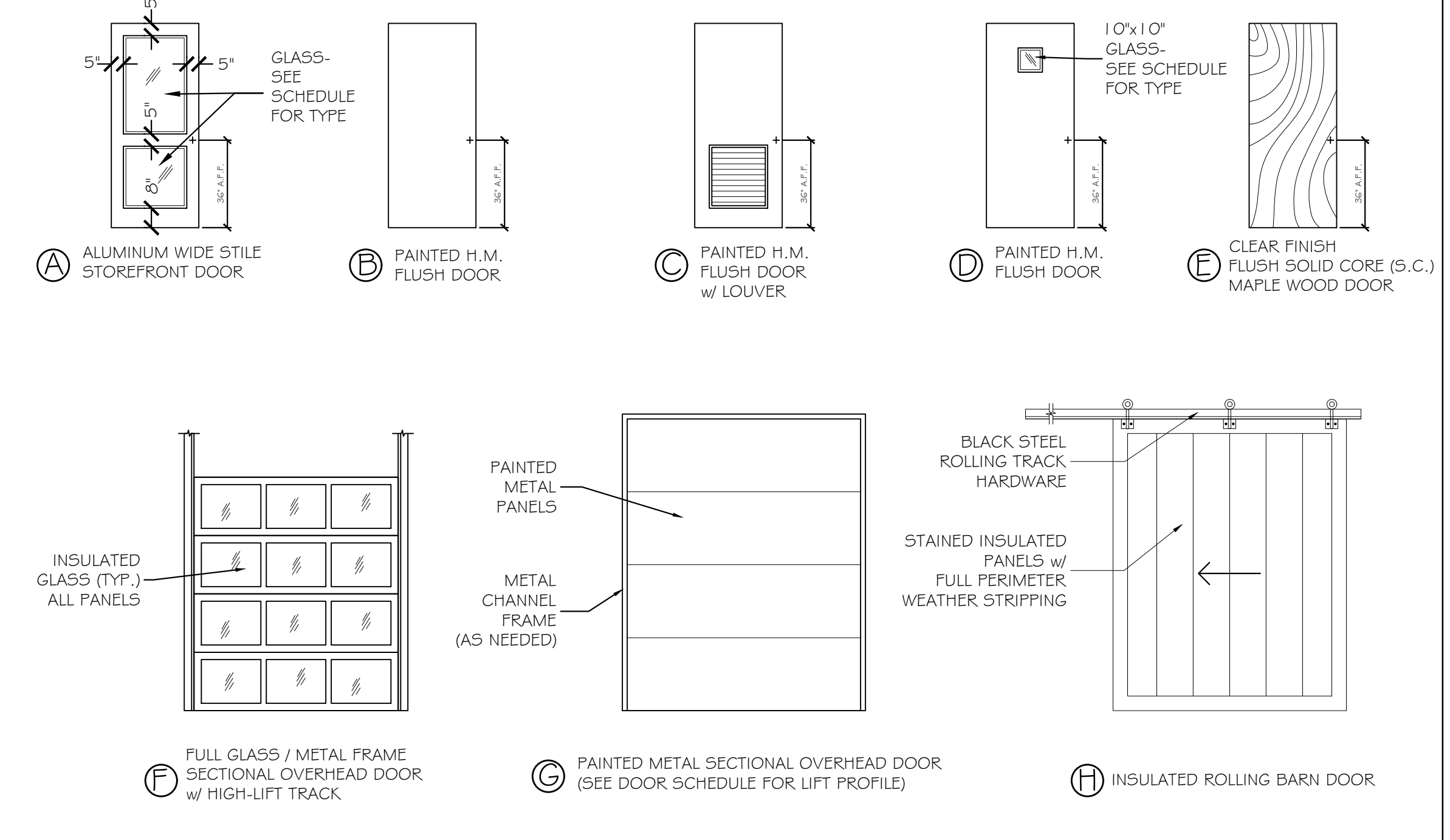
9 HEAD AT OVERHAD SECTIONAL DOOR / BRICK 1 1/2" = 1'-0"



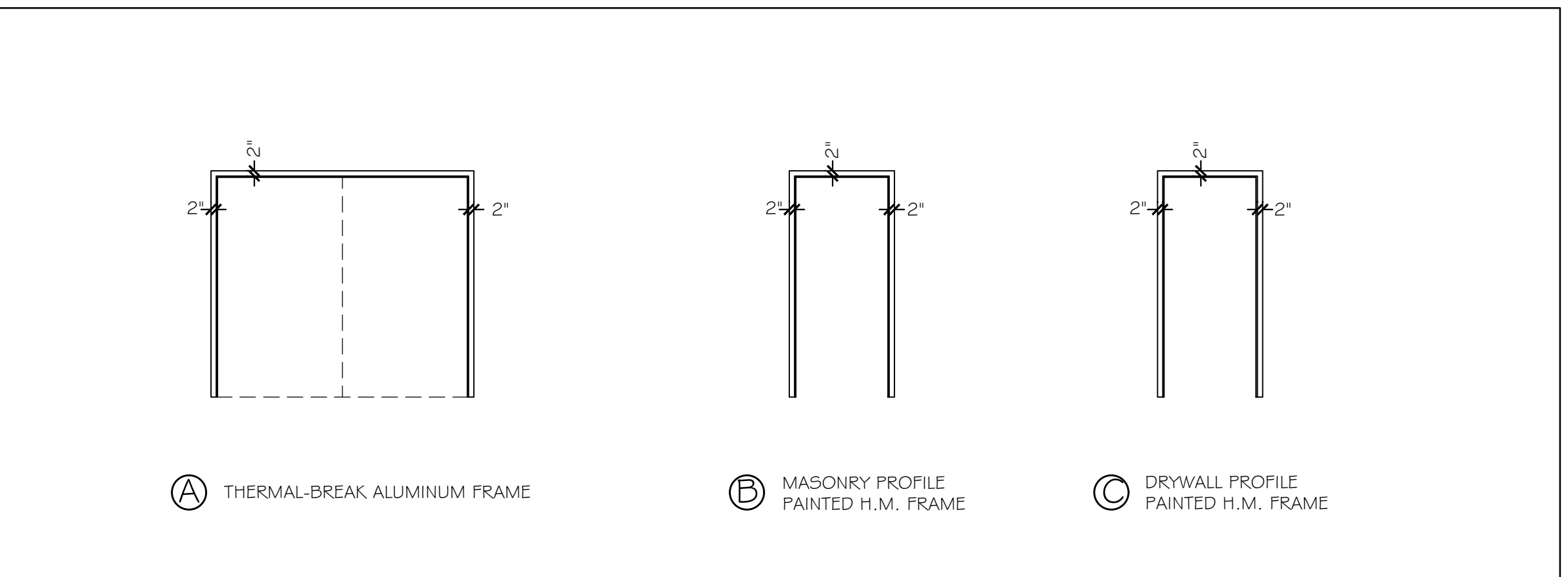
10 JAMB AT OVERHAD SECTIONAL DOOR / BRICK 1 1/2" = 1'-0"

DOOR SCHEDULE

NO.	TYPE	SIZE (w x h)	THK	INSUL	HDWE	FR	GLASS		REMARKS	FRAMES		THRESHOLDS			
							TYPE	SIZE		FR	PROFILE	DETAILS HEAD	DETAILS JAMB	MATERIAL	DETAILS SILL
201	A	6070 PR	1 3/4"	---	HW-1	---	T / TH	FULL	---	A	T-BREAK	7-A3	8-A3	ALUM	1/2" x 7"
202	D	3070	1 3/4"	R-10"	HW-2	---	T / TH	10x10	*MINIMUM	B	MAS	7-A3 SIM	8-A3 SIM	ALUM	1/2" x 7"
203	G	8076	---	R-10"	---	---	T / TH	FULL	---	M.O.	MFGR	9-A3	10-A3	CONC	---
204	F	8076	---	---	---	---	T / TH	FULL	---	M.O.	MFGR	9-A3	10-A3	CONC	---
205	E	3070	1 3/4"	---	HW-3	---	---	---	---	C	DW	1-A4	2-A4	CONC	---
206	(E)	3070	1 3/4"	---	HW-4	---	---	---	---	C	DW	1-A4	2-A4	CONC	---
207	---	8080	---	R-10	---	---	---	---	BY COOLER MFGR	---	---	---	---	CONC	---
208	C	3070	1 3/4"	---	HW-6	1 HR	---	---	LOUVER SIZE TBV	C	1 HR DW	1-A4	2-A4	CONC	---
209	B	3070	1 3/4"	---	HW-3	---	---	---	---	C	DW	1-A4	2-A4	CONC	---
210	(E)	3070	1 3/4"	---	HW-6	---	---	---	EXISTING	C	DW	1-A4	2-14	CONC	---
211	D	3070	1 3/4"	---	HW-7	2 HR	FIRELITE	10x10	---	C	2 HR DW	1-A4	2-14	TS	---
212	(E)	(E)	(E)	---	HW-8	---	---	---	EXISTING	(E)	(E)	(E)	(E)	(E)	(E)
E	(E)	(E)	(E)	---	---	---	---	---	EXISTING	(E)	(E)	(E)	(E)	(E)	(E)



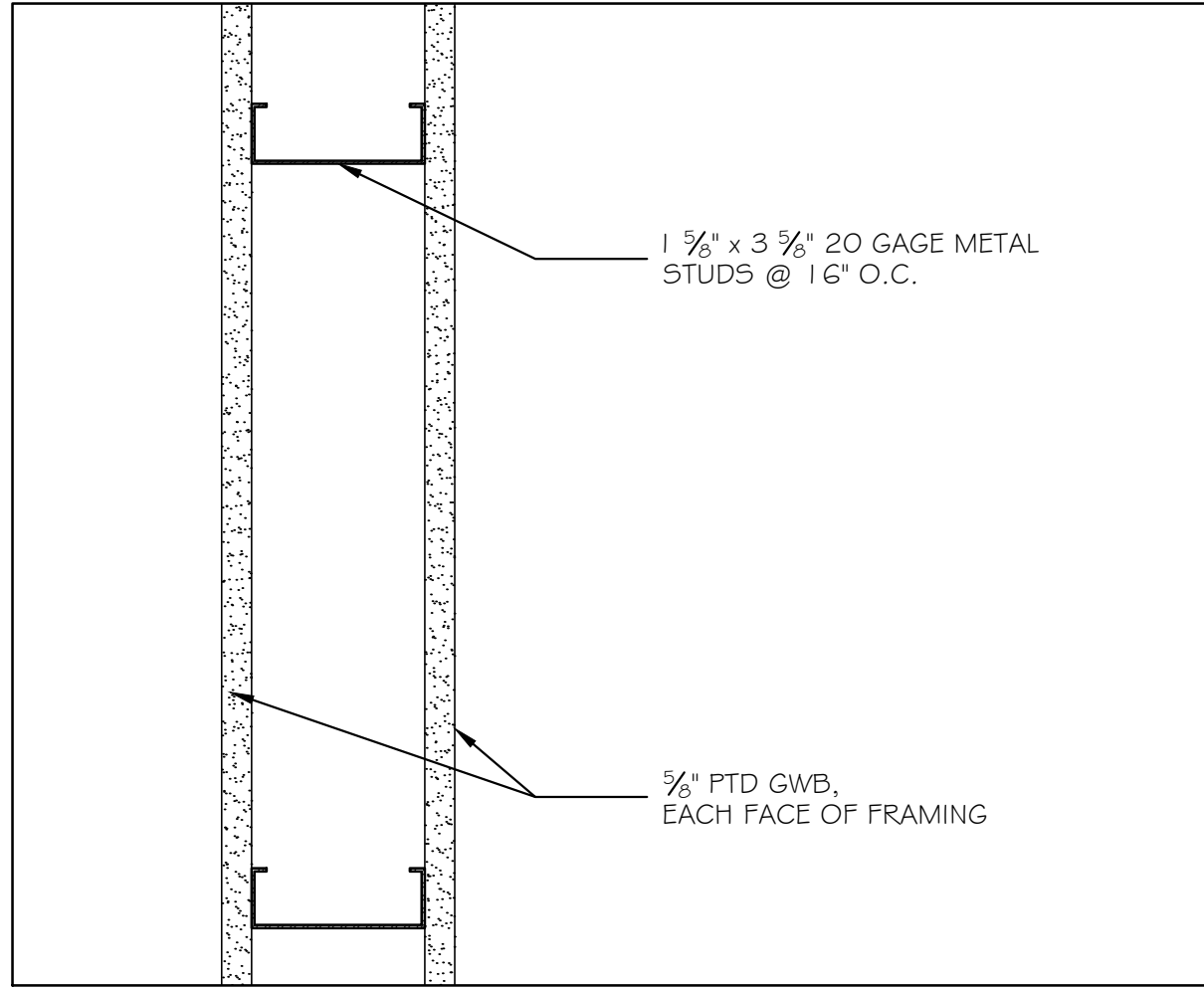
DOOR TYPES NO SCALE



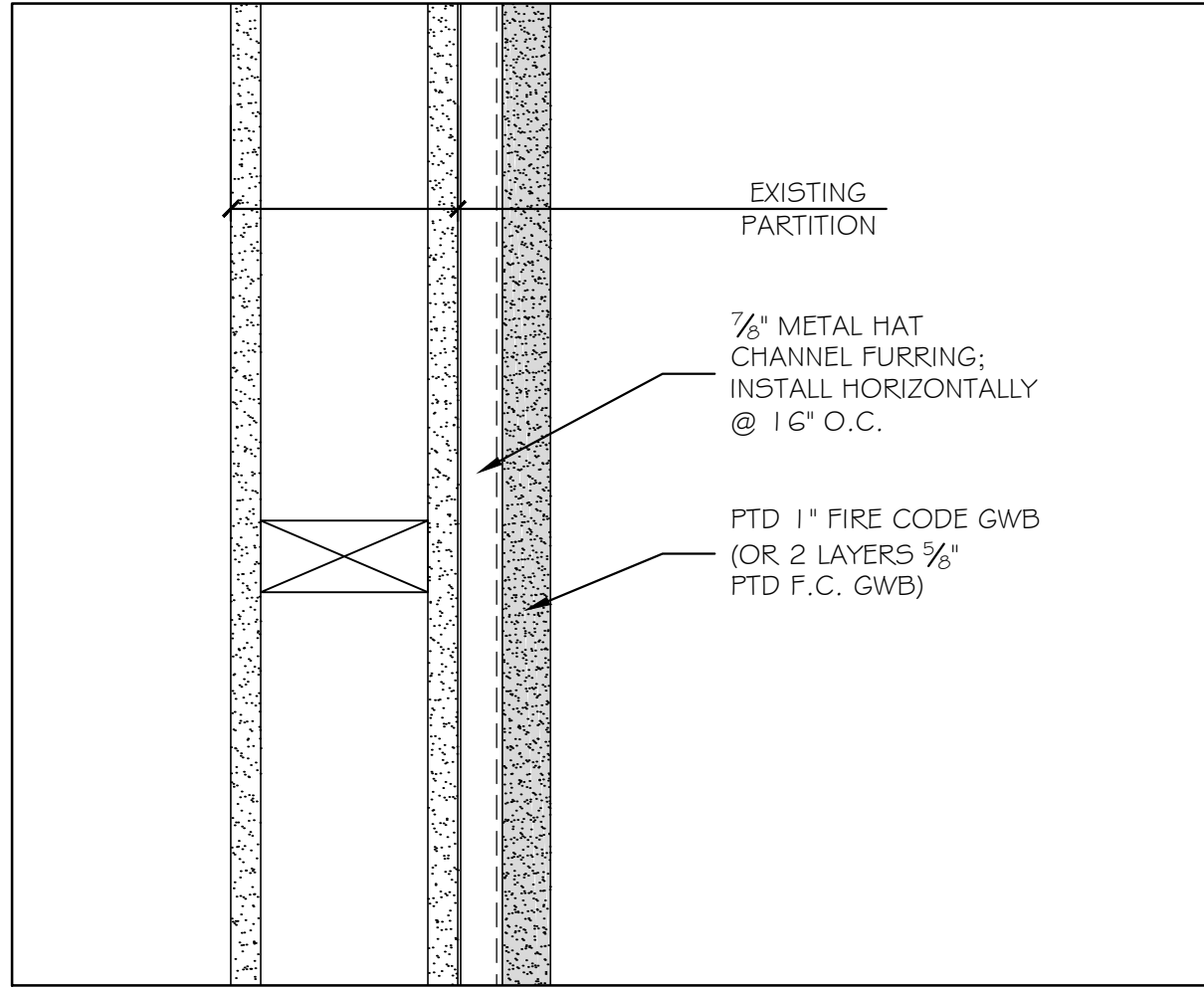
FRAME TYPES NO SCALE

HW-1 NEW EXTERIOR PAIR DOORS (BY ALUMINUM DOOR)	HW-3 NEW INTERIOR DOOR	HW-6 NEW INTERIOR RATED DOOR
6 BUTTS	3 BUTTS	3 BUTTS
2 EXIT DEVICES WITH EXTERIOR PULLS	1 LEVER LOCKSET - PASSAGE FUNCTION	1 LEVER LOCKSET - PASSAGE FUNCTION
2 DOOR CLOSERS	1 DOOR STOP	1 CLOSER
1 THRESHOLD	2 FRAME SILENCERS	2 FRAME SILENCERS
1 DOOR BOTTOM WEATHERSTRIPPING	1 SET HEAD & JAMB WEATHERSTRIPPING SET	HW-7 NEW INTERIOR RATED DOOR
1 SET HEAD & JAMB WEATHERSTRIPPING SET	---	3 BUTTS
---	---	1 EXIT DEVICE WITH EXTERIOR PULL
---	---	1 CLOSER
---	---	2 FRAME SILENCERS
---	---	HW-8 EXISTING EXTERIOR DOOR
---	---	REMOVE EXISTING LOCKSET - PLUG OPENINGS
---	---	1 EXIT DEVICE WITH EXTERIOR PULL
---	---	1 CLOSER

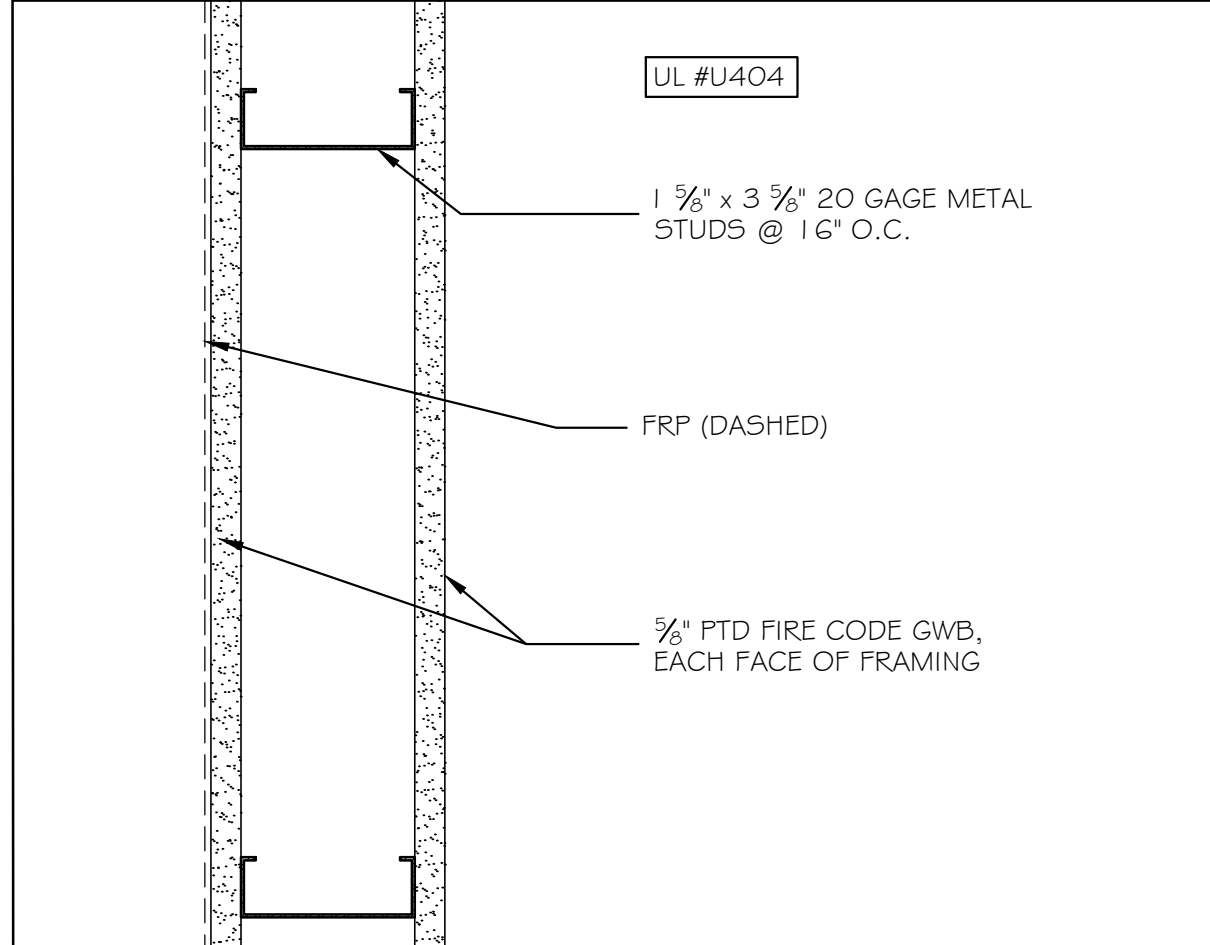
HARDWARE SETS NO SCALE



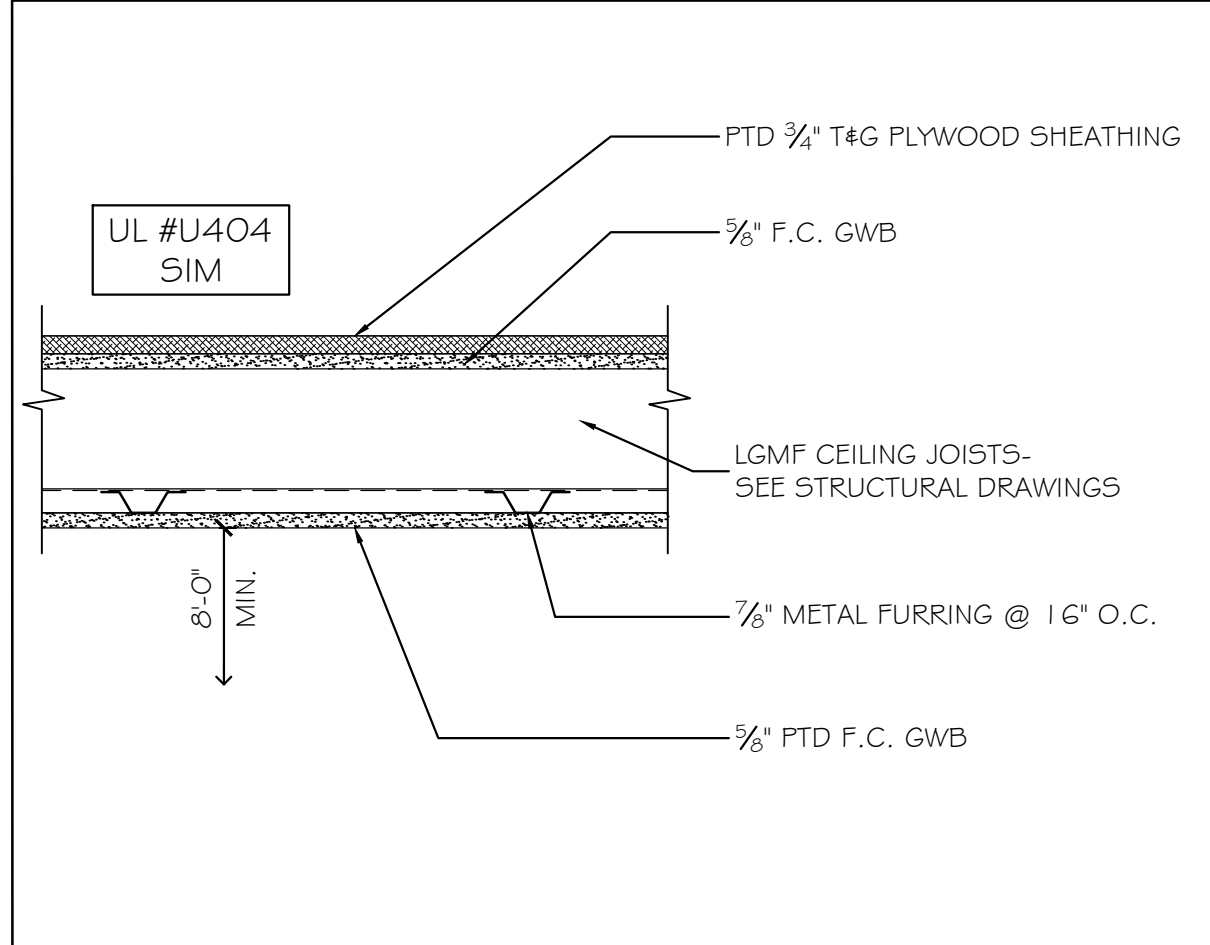
1 TYPICAL PARTITION TYPE 1 3" = 1'-0"



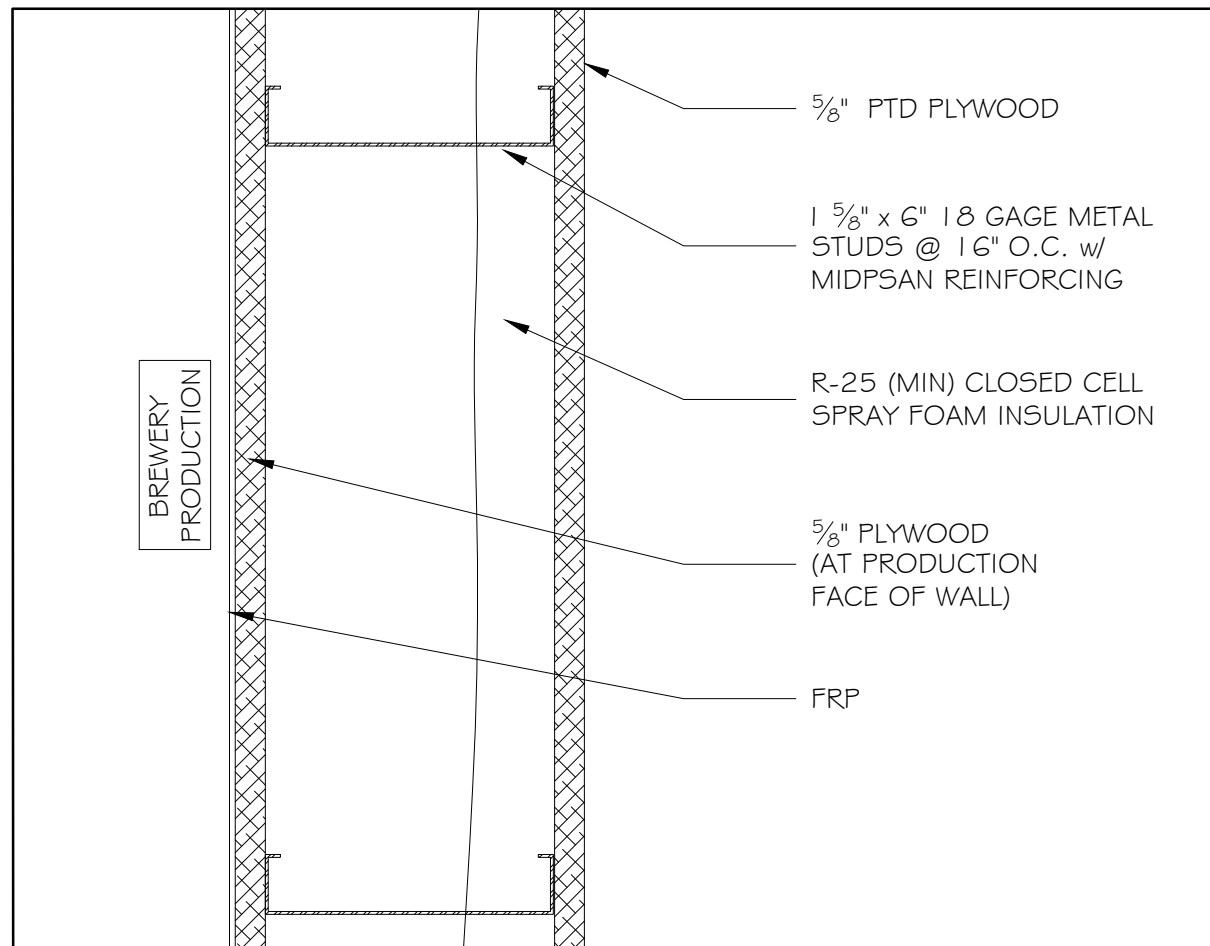
4 2 HR RATED PARTITION TYPE 2 3" = 1'-0"



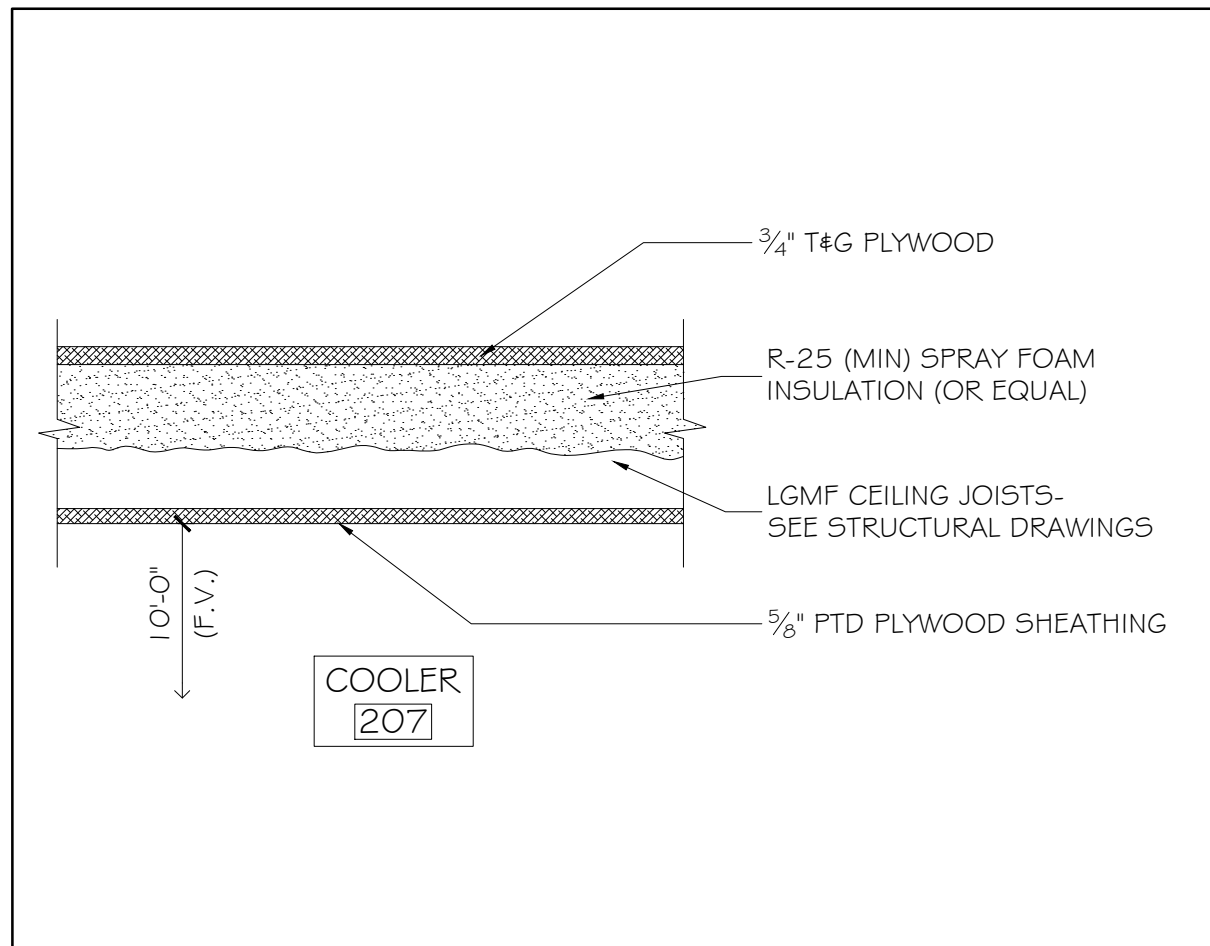
2 1 HR RATED PARTITION TYPE 3 3" = 1'-0"



5 1 HR RATED CEILING ASSEMBLY DETAIL 1 1/2" = 1'-0"



3 TYPICAL PARTITION TYPE AT COOLER 3" = 1'-0"



6 COOLER [207] ASSEMBLY DETAIL 1 1/2" = 1'-0"

GRANT HAYS ASSOCIATES

ARCHITECTURE & INTERIOR DESIGN
P.O. BOX 6179 FALMOUTH MAINE 04105
207.871.5900 www.granthays.com

STATE OF MAINE
LICENSED ARCHITECT
MICHAEL F. HAYS
No. 1724
Michael F. Hays

REVISION 25 APR 2017



GOODFIRE BREWING COMPANY
219 ANDERSON TREET
PORTLAND, MAINE 04102

PARTITIONS, DOORS & FINISHES

DATE 13 FEB 2017
SCALE A/ NOTED
DRAWN MFH/mgk
JOB NO. 161001

A-3
COPYRIGHT REPRODUCTION OR RESALE OF THIS DOCUMENT WITHOUT WRITTEN PERMISSION FROM GRANT HAYS ASSOCIATES IS PROHIBITED.